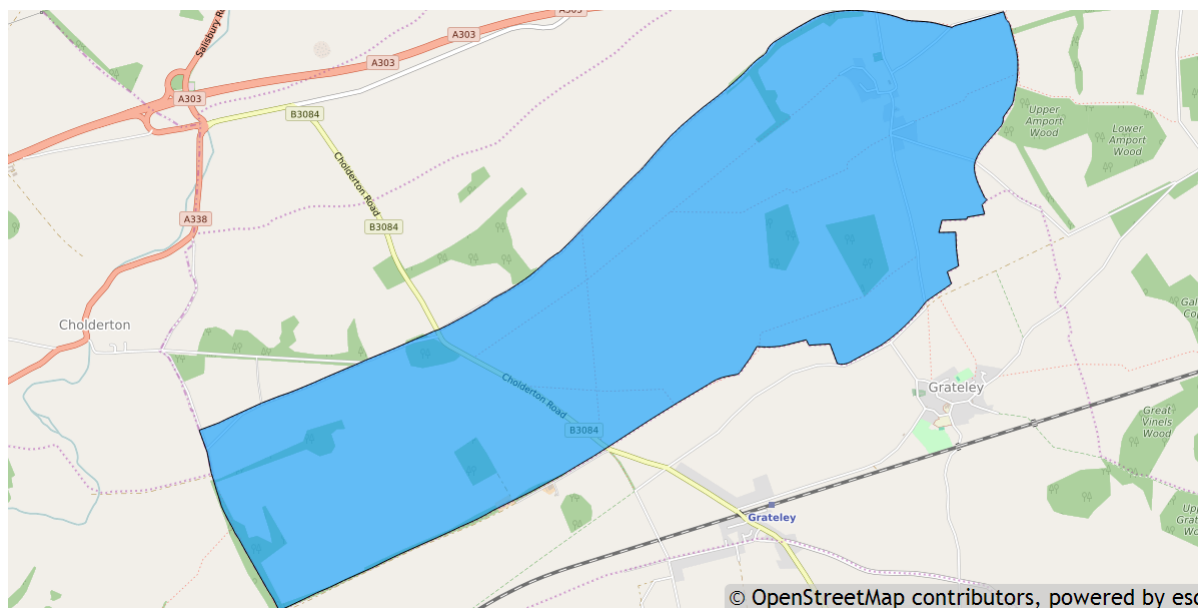


Quarley parish profile

This profile provides a summary of the latest available information on the demographic make-up of the Quarley parish within Test Valley. It looks at information on topics such as the population structure, economic, housing, health and educational information for the parish.

Abbots Ann is one of the 59 parishes in Test Valley. It has an area of 685 hectares which represents 1.1% of the total area of Test Valley.



Elected representatives

<p>Hampshire County Councillor</p> <p>Cllr Zilliah Brooks Home: 01264 335388 Email: zilliah.brooks@hants.gov.uk</p>	<p>Test Valley Borough Councillor</p> <p>Cllr Ben Few-Brown Home: 01980 629569 Mobile: 07889 806707 Email: clrbfewbrown@testvalley.gov.uk</p>
<p>Quarley Parish Council Chairman</p> <p>Cllr Joanna Ferguson Daytime: 01264 889131 Email: joanna.ferguson1@btinternet.com</p>	<p>Quarley Parish Council Clerk</p> <p>Mr Richard Waterman Daytime: 01264 772460 Mobile: 07777 678485 Email: richard.waterman150@btinternet.com</p>

Residents

The estimated 2016 population of Quarley parish is 157. This is expected to fall by 2021 to 156 (a fall of 0.6%).

Quarley's resident population is 54.1% female and 45.9% male.

Young people (0-19) currently make up 19.1% of Quarley's population; this is expected to increase slightly to 19.9% by 2021.

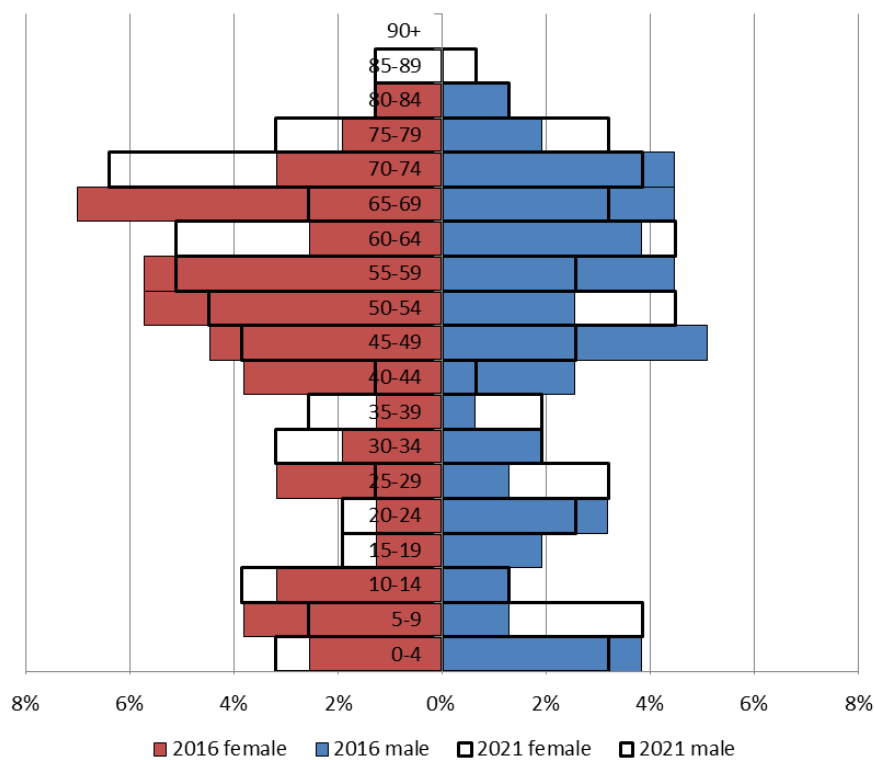
Young adults (20-39) currently make up 14.6% of the parish's population; this is expected to rise to 18.6% by 2021.

Middle aged residents (40-64) currently account for 40.8% of Quarley's population; this is expected to fall to 34.6% by 2021.

Those **aged 65 and over** make up 25.5% of the parish's population; this is expected to rise to 26.9% by 2021.

Those **aged 85 and over** currently represent 0.0% of the population; this is expected to rise to 1.9% by 2021.

Age of parish population

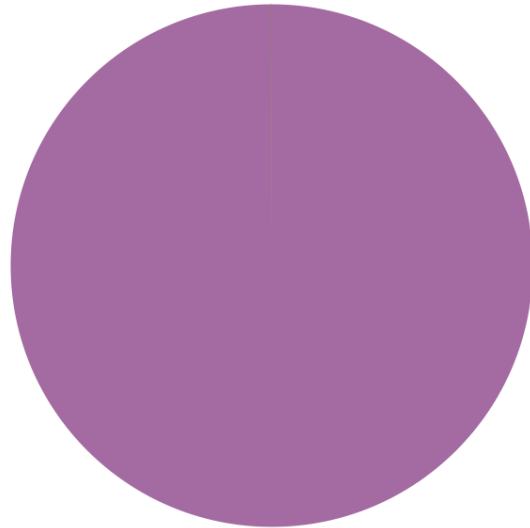


Ethnicity

The largest ethnic group in Quarley is “White” at 100.0% of the parish's population. That compares with a figure of 95.9% for Test Valley as a whole and 95.0% for Hampshire.

Residents by ethnicity (count)

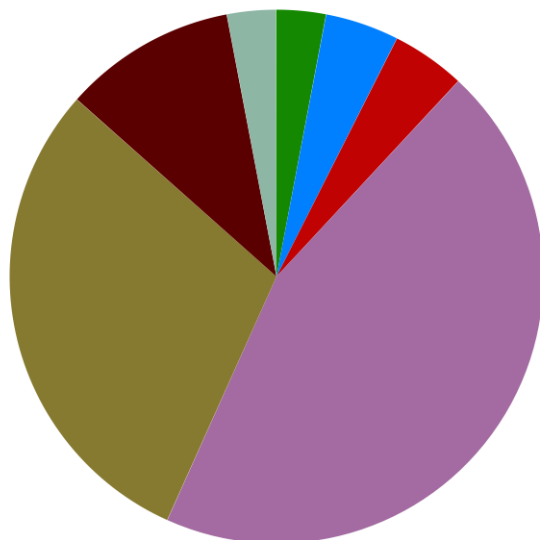
Residents who are Asian/Asian British	0
Residents who are Black/African/Caribbean/Black British	0
Residents who are Mixed/multiple ethnic groups	0
Residents who are White	150
Residents who are Other ethnic group	0



Powered by esd

Households

Quarley parish has **67 households**, which represent 2.1% of Test Valley's 47,626 households. The household split by tenure is shown below (tenure refers to the financial arrangements under which a home is occupied).



Households by tenure (count)

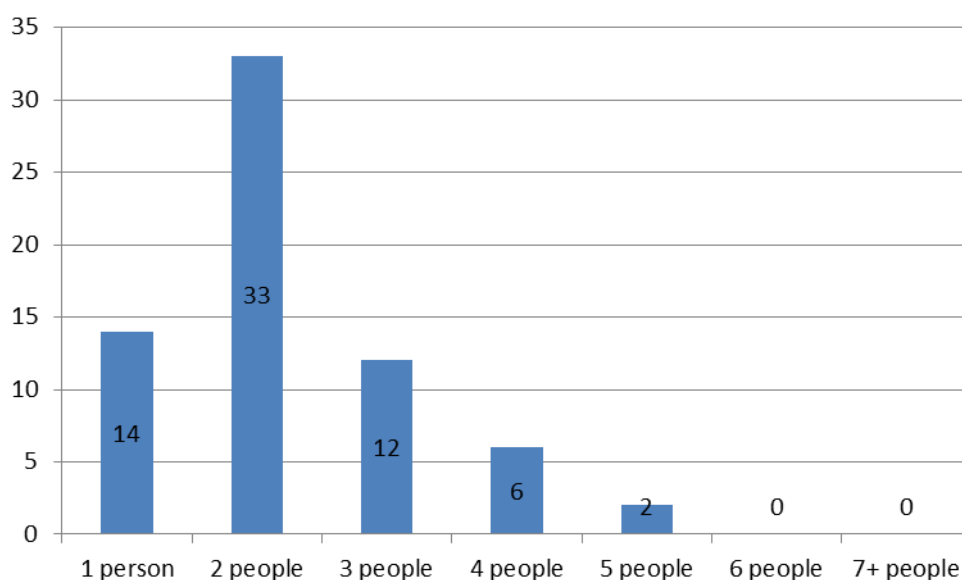
Households rented from council or equivalent	2
Households rented from other private owners	3
Households rented from other social landlords	3
Households owned outright	30
Households owned with a mortgage or loan	20
Households rented from private landlord or letting agency	7
Households where occupiers living rent free	2
Households in shared ownership	0

Powered by esd

The majority of properties (74.6%) are **owned by those who live in them**. This is higher than the Test Valley average of 70.4%.

14.9% of Quarley households are **privately rented**, and 7.5% are **socially rented**. This compares to 12.9% and 14.4% respectively across Test Valley.

Households by number of residents



49.3% of Quarley's households are occupied by two people, and 20.9% by one person. 29.9% of the parish's households are occupied by more than two people.

Quarley has 5 households with **dependent children aged 0 to 4**. That represents 7.5% of the parish's households.

18 households in the parish have **dependent children of all ages**. That represents 26.9% of the parish's households.

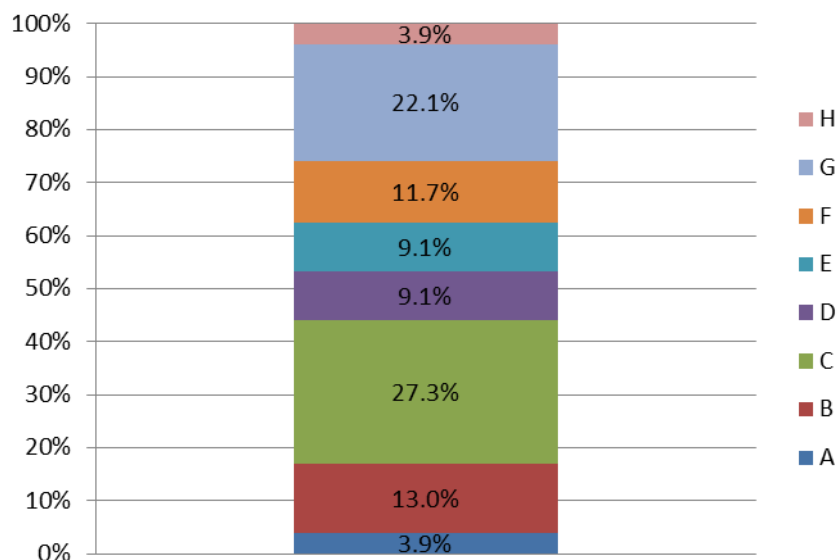
House prices

According to Zoopla, the average house price in Quarley (as of September 2016) is **£533,685**. This has increased by 23.6% in the last five years.

It is estimated that **38.2% of households in north rural Test Valley cannot afford to buy a private property**. The central rural area includes the wards of Amport, Anna, Bourne Valley, Harewood, Over Wallop, and Penton Bellinger.

Council Tax Bands

Properties by Council Tax Band



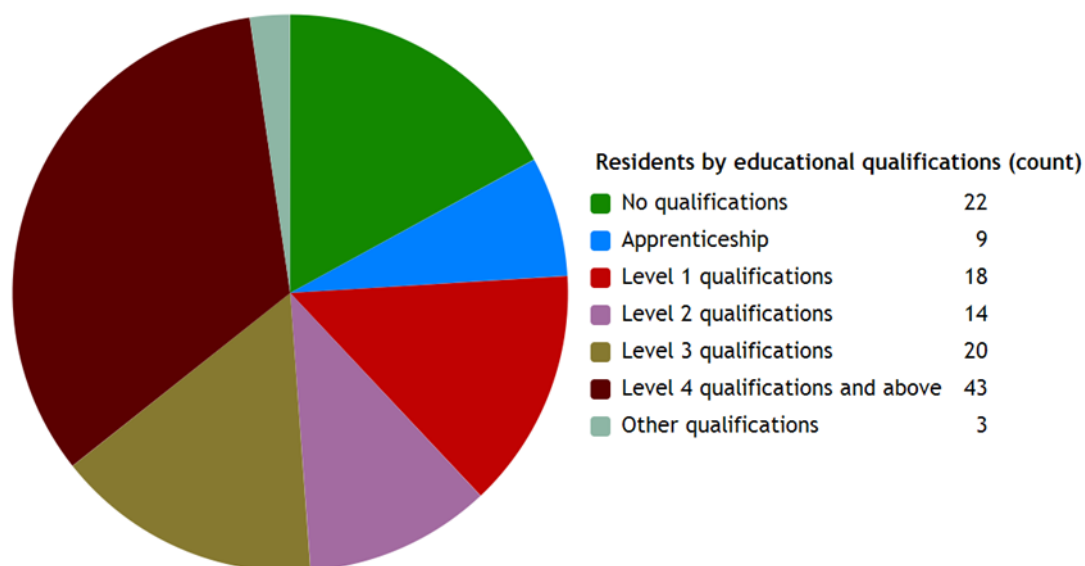
16.9 % of Quarley properties are at the **lower** end of the property market (Bands A and B). This compares to 22.2% for Test Valley as a whole.

45.5% of the parish's properties are in the **middle** range of the property market (Bands C to E). This compares to 60.8% across the whole borough.

37.7% of Quarley's properties are at the **higher** end of the property market (Bands F to H). This compares to 17.1% of all Test Valley properties.

Education

33.3% of Quarley's residents have achieved **level 4 qualifications** and above compared to 30.5% in Test Valley as a whole. 17.1% of Quarley's residents have **no qualifications** compared to 18.4% in Test Valley.



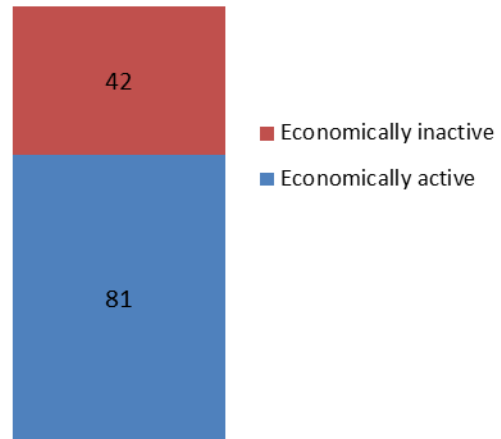
No qualifications	No academic or professional qualifications.
Level 1	1+O level passes, 1+CSE/GCSE any grades, NVQ level 1, Basic/Essential skills, NVQ Level 1.
Level 2	5+O level passes, 5+GCSEs (grades A*-C), 1 A level, 2-3 AS levels, City and Guilds Craft, NVQ level 2.
Level 3	2+A levels, Higher School certificate, NVQ level 3, City and Guilds Advanced Craft, BTEC National.
Level 4/5	Degree (e.g. BA, BSc) higher degree (e.g. MA, PhD, PGCE), NVQ levels 4 and 5, qualified teacher, nurse or accountant status, BTEC Higher.
Other qualification	Level unknown, vocational/work-related qualifications, foreign qualifications.

Employment

65.9% of Quarley residents aged 16-74 are **economically active**, compared to 73.4% of Test Valley residents. This includes people in full, part and self-employment, those who are actively seeking a job, and full-time students.

The remaining 34.1% of residents aged 16-74 are **economically inactive**, compared to 26.6% of Test Valley residents. This includes people who are retired, long-term sick or disabled, or who look after the home and family.

Economic activity (count)

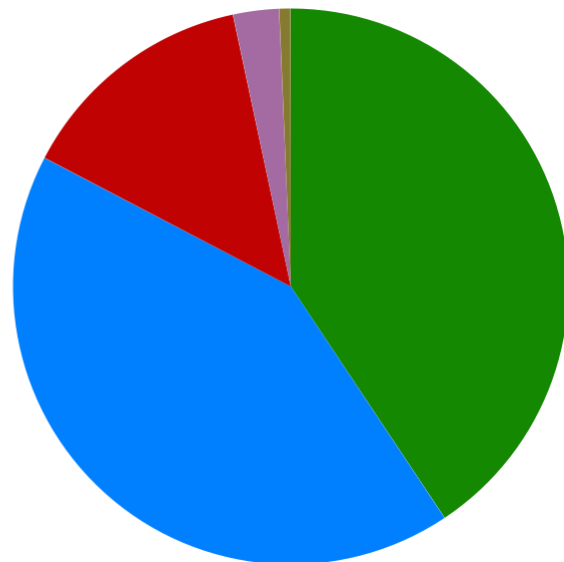


Health

Quarley has 4 (2.7%) residents that report being in **bad health** and 1 (0.7%) residents that report being in **very bad health**.

Residents by level of health (count)

Very good health	61
Good health	63
Fair health	21
Bad health	4
Very bad health	1



Powered by esd

Community plans

Details of any community planning exercises your parish is undertaking can be added here. Please get in touch with the Policy Team at the email address below and we will be more than happy to add information at your request.

Local facilities

Food stores	Yes
Other shops	None
Primary schools	None
Secondary schools	None
Health facilities	None
Leisure facilities	None
Public houses	None
Community facilities	Quarley Village Hall
Churches	St Michael's Church
Local recycling centres	None

Public and community transport

Amport, Monxton, Grateley, Quarley Neighbourcare Group

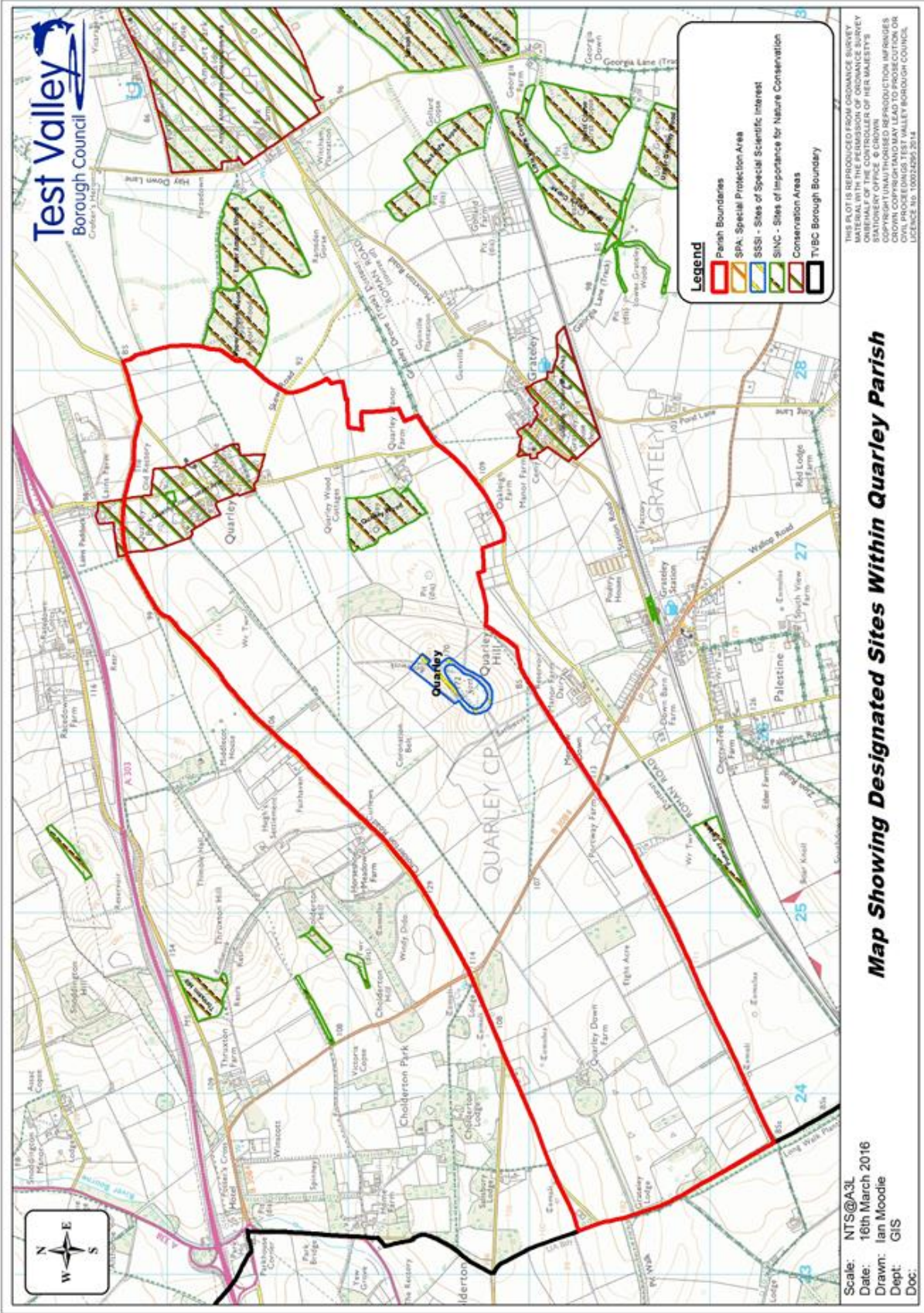
A voluntary Car Scheme which offers to take residents to medical and leisure appointments as well as shopping.

More information can be found online at:

<http://bit.ly/2eeVL4G>

Further community transport information for Test Valley can be found on Hampshire County Council's website:

<http://bit.ly/2ecJuLK>



Additional information

The information in this profile has been prepared by Test Valley Borough Council's Policy Team in partnership with the Local Government Association. If you would like further information, please contact the Policy Team on 01264 368000 or policyteam@testvalley.gov.uk, and we will be happy to work with you to provide a more detailed profile.

This profile contains key information for you to use to contribute to the development of a Neighbourhood Plan or other community project. If you know of any additional information about the parish that may be of use (for example, information on local facilities) please get in touch and we will endeavor to work with you to add to or change the profile.

Please note that most of the data featured in this profile is taken from the 2011 Census, whilst the population data is taken from Hampshire County Council's 2016 Small Area Population Forecast. Therefore, there is some discrepancy in population figures.