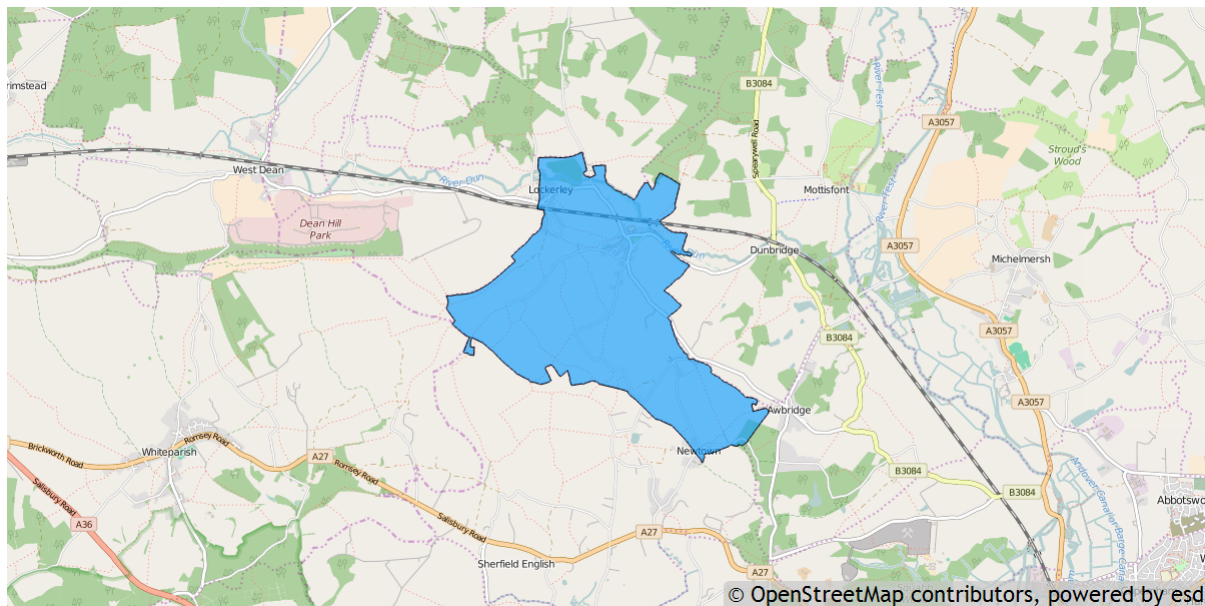


Lockerley parish profile

This profile provides a summary of the latest available information on the demographic make-up of the Lockerley parish within Test Valley. It looks at information on topics such as the population structure, economic, housing, health and educational information for the parish.

Lockerley is one of the 59 parishes in Test Valley. It has an area of 622 hectares which represents 1.0% of the total area of Test Valley



Elected representatives

<p>Hampshire County Councillor</p> <p>Cllr Andrew Gibson Home: 01264 861138 Office: 01264 861087 Mobile: 07802 878248 Email: andrew.gibson@hants.gov.uk</p>	<p>Test Valley Borough Councillor</p> <p>Cllr Ian Jeffrey Home: 01794 388872 Email: clrijeffrey@testvalley.gov.uk</p>
<p>Lockerley Parish Council Chairman</p> <p>Cllr Len Arthur Daytime: 01794 342499 Email: len.arthur@btinternet.com</p>	<p>Lockerley Parish Council Clerk</p> <p>Ms Sue Holder Phone: 01794 340130 Email: clerk.lockerley@parish.hants.gov.uk</p>

Residents

The estimated 2016 population of Lockerley parish is 809. This is expected to decrease to 796 by 2021 (a decrease of 1.6%).

Lockerley's resident population is 51.9% female and 48.1% male.

Young people (0-19) currently make up 20.5% of Lockerley's population; this is expected to rise very slightly to 20.6% by 2021.

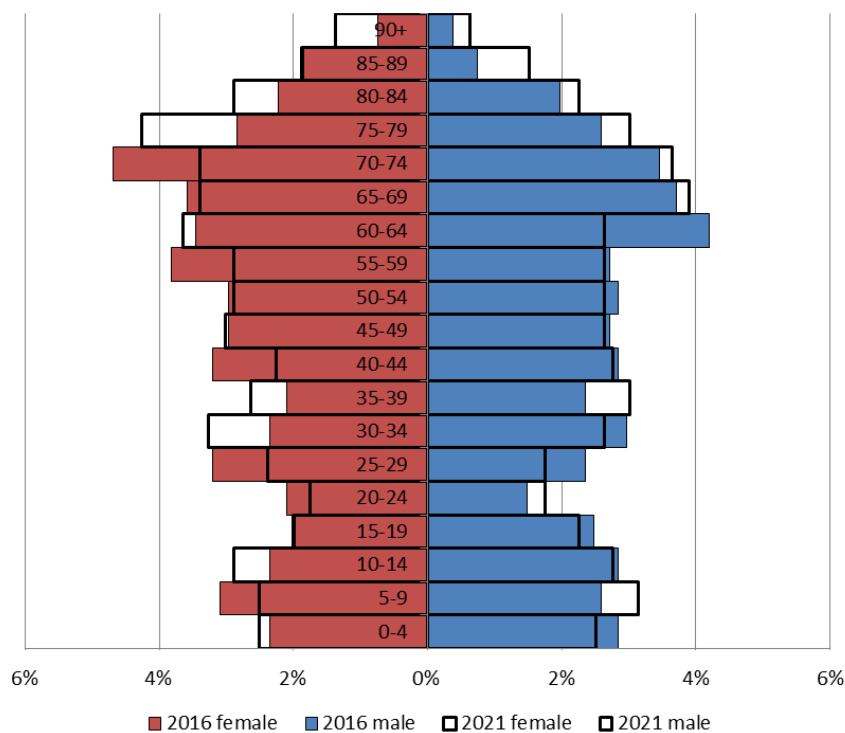
Young adults (20-39) currently make up 18.9% of the parish's population; this is expected to rise slightly to 19.2% by 2021.

Middle aged residents (40-64) currently account for 31.8% of Lockerley's population; this is expected to fall to 28.0% by 2021.

Those **aged 65 and over** make up 28.8% of the parish's population; this is expected to rise to 32.2% by 2021.

Those **aged 85 and over** currently represent 3.7% of the population; this is expected to rise to 5.4% by 2021.

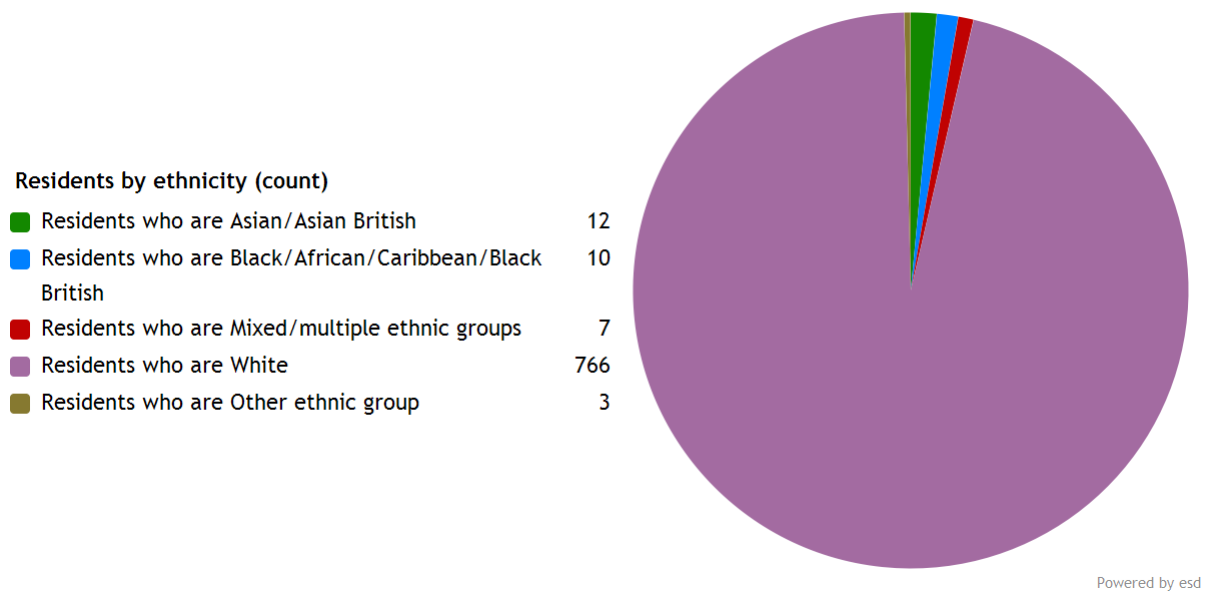
Age of parish population



Ethnicity

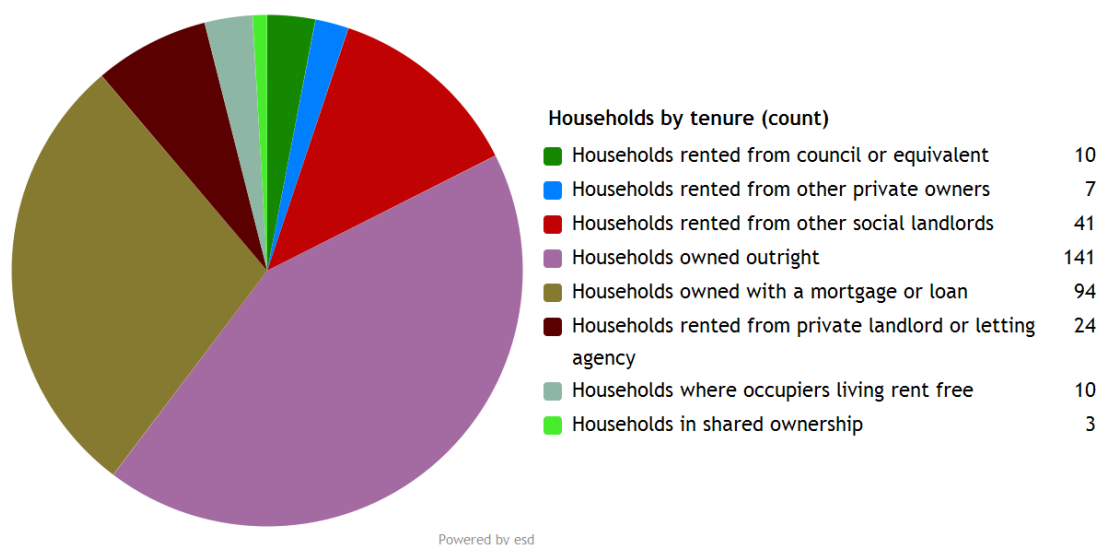
The largest ethnic group in Lockerley is “White” at 95.9% of the parish's population. That compares with a figure of 95.9% for Test Valley as a whole and 95.0% for Hampshire.

The second largest ethnic group (1.5%) is “Asian/Asian British”. That compares with 2.0% for Test Valley as a whole and 2.7% for Hampshire.



Households

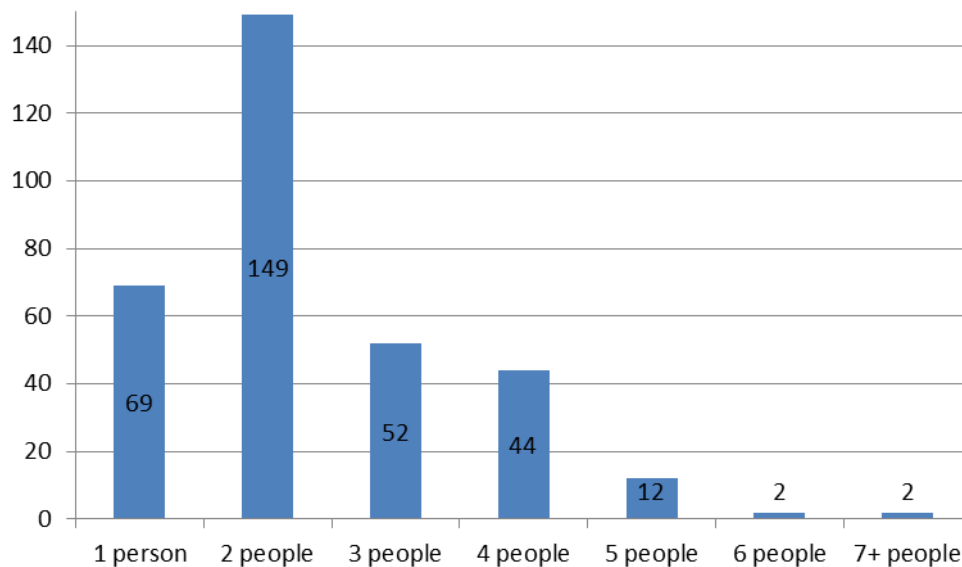
Lockerley parish has **330 households**, which represent 0.7% of Test Valley's 47,626 households. The household split by tenure is shown below (tenure refers to the financial arrangements under which a home is occupied).



The majority of properties (71.2%) are **owned by those who live in them**. This is higher than the Test Valley average of 70.4%.

9.4% of Lockerley households are **privately rented**, and 15.5% are **socially rented**. This compares to 12.9% and 14.4% respectively across Test Valley.

Households by number of residents



45.2% of Lockerley's households are occupied by two people, and 20.9% by one person. 34.0% of the parish's households are occupied by more than two people.

Lockerley has 34 households with **dependent children aged 0 to 4**. That represents 10.3% of the parish's households.

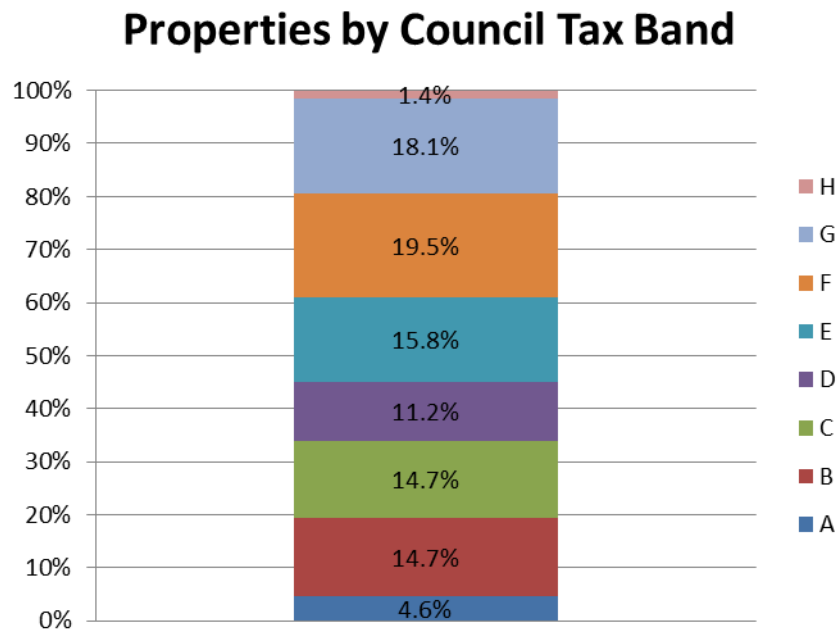
83 households in the parish have **dependent children of all ages**. That represents 25.2% of the parish's households.

House prices

According to Zoopla, the average house price in Lockerley (as of September 2016) is **£597,109**. This has increased by 14.4% in the last five years.

It is estimated that **39.4% of households in central rural Test Valley cannot afford to buy a private property**. The central rural area includes the wards of Dun Valley, Kings Somborne and Michelmersh, Blackwater, and Broughton and Stockbridge.

Council Tax Bands



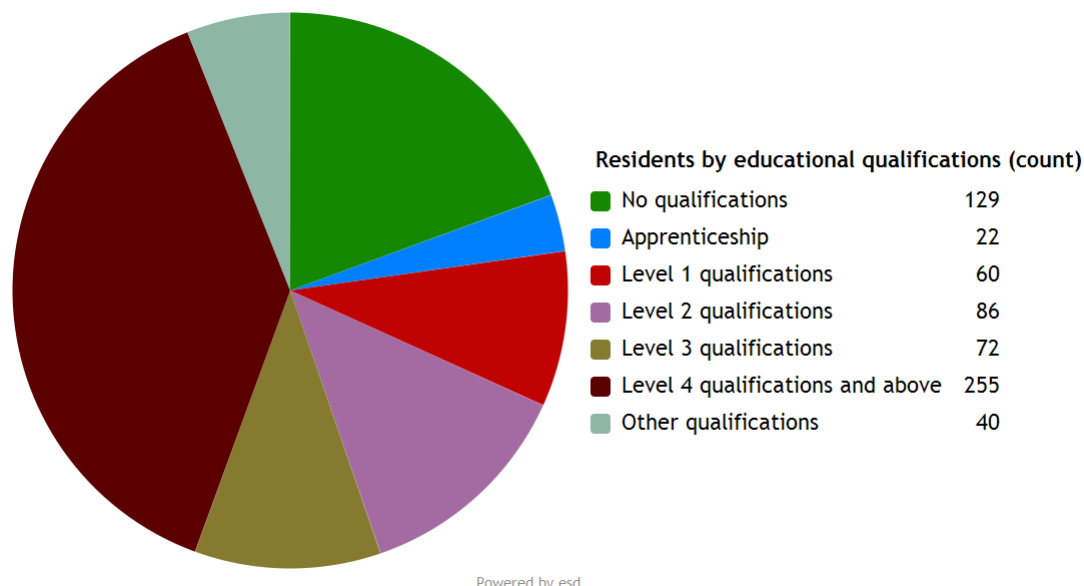
19.3% of Lockerley properties are at the **lower** end of the property market (Bands A and B). This compares to 22.2% for Test Valley as a whole.

41.7% of the parish's properties are in the **middle** range of the property market (Bands C to E). This compares to 60.8% across the whole borough.

39.0% of Lockerley's properties are at the **higher** end of the property market (Bands F to H). This compares to 17.1% of all Test Valley properties.

Education

38.4% of Lockerley's residents have achieved **level 4 qualifications** and above compared to 30.5% in Test Valley as a whole. 19.4% of Lockerley's residents have **no qualifications** compared to 18.4% in Test Valley.



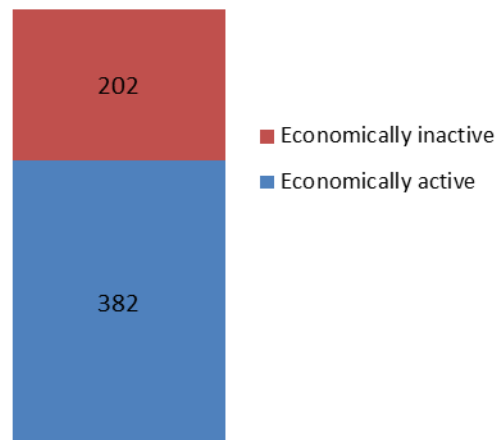
No qualifications	No academic or professional qualifications.
Level 1	1+O level passes, 1+CSE/GCSE any grades, NVQ level 1, Basic/Essential skills, NVQ Level 1.
Level 2	5+O level passes, 5+GCSEs (grades A*-C), 1 A level, 2-3 AS levels, City and Guilds Craft, NVQ level 2.
Level 3	2+A levels, Higher School certificate, NVQ level 3, City and Guilds Advanced Craft, BTEC National.
Level 4/5	Degree (e.g. BA, BSc) higher degree (e.g. MA, PhD, PGCE), NVQ levels 4 and 5, qualified teacher, nurse or accountant status, BTEC Higher.
Other qualification	Level unknown, vocational/work-related qualifications, foreign qualifications.

Employment

65.4% of Lockerley residents aged 16-74 are **economically active**, compared to 73.4% of Test Valley residents. This includes people in full-, part- and self-employment, those who are actively seeking a job, and full-time students.

The remaining 34.6% of residents aged 16-74 are **economically inactive**, compared to 26.6% of Test Valley residents. This includes people who are retired, long-term sick or disabled, or who look after the home and family.

Economic activity (count)

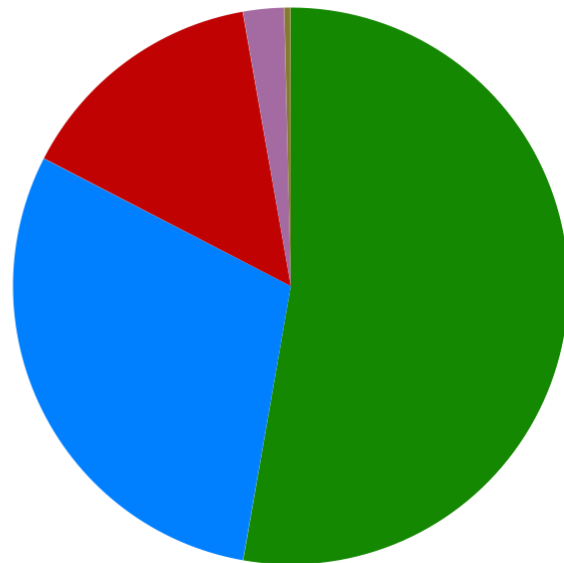


Health

Lockerley has 19 (2.4%) residents that report being in **bad health** and 3 (0.4%) residents that report being in **very bad health**.

Residents by level of health (count)

Very good health	421
Good health	238
Fair health	117
Bad health	19
Very bad health	3



Powered by esd

Community plans

Details of any community planning exercises your parish is undertaking can be added here. Please get in touch with the Policy Team at the email address below and we will be more than happy to add information at your request.

Local facilities

Food stores	Yes – Lockerley Village Shop
Other shops	None
Primary schools	Lockerley Church of England Primary School
Secondary schools	None
Health facilities	None
Leisure facilities	None
Public houses	None
Community facilities	Memorial Hall Scout Hall Parish Hall
Churches	Lockerley Baptist Church St John's Church
Local recycling centres	Memorial Hall
Village website	http://www.lockerley.org.uk/

Public and community transport

<p>Salisbury Reds bus service 37</p> <p>This bus service runs between Salisbury and West Dean via several Test Valley villages, including Lockerley.</p> <p>More information about the route and the timetable can be found online at:</p> <p>http://bit.do/cSQCV</p>	<p>Romsey Dial-a-Ride</p> <p>Dial-a-Ride provides weekly door-to-door transport. The service is available to anyone who has no access to, or experiences difficulty with using public bus services. The service takes residents into Romsey to access local amenities.</p> <p>More information can be found online at:</p> <p>http://ow.ly/NHOD306pYwF</p>
<p>Thorngate Village Care Group</p> <p>A voluntary car scheme which takes residents to medical, dental and optician appointments.</p> <p>For more information please visit:</p> <p>http://ow.ly/Me6L306pYG0</p>	<p>Further community transport information for Test Valley can be found on Hampshire County Council's website:</p> <p>http://bit.ly/2ecJuLK</p>

Additional information

The information in this profile has been prepared by Test Valley Borough Council's Policy Team in partnership with the Local Government Association. If you would like further information, please contact the Policy Team on 01264 368000 or policyteam@testvalley.gov.uk, and we will be happy to work with you to provide a more detailed profile.

This profile contains key information for you to use to contribute to the development of a Neighbourhood Plan or other community project. If you know of any additional information about the parish that may be of use (for example, information on local facilities) please get in touch and we will endeavor to work with you to add to or change the profile.

Please note that most of the data featured in this profile is taken from the 2011 Census, whilst the population data is taken from Hampshire County Council's 2016 Small Area Population Forecast. Therefore, there is some discrepancy in population figures.