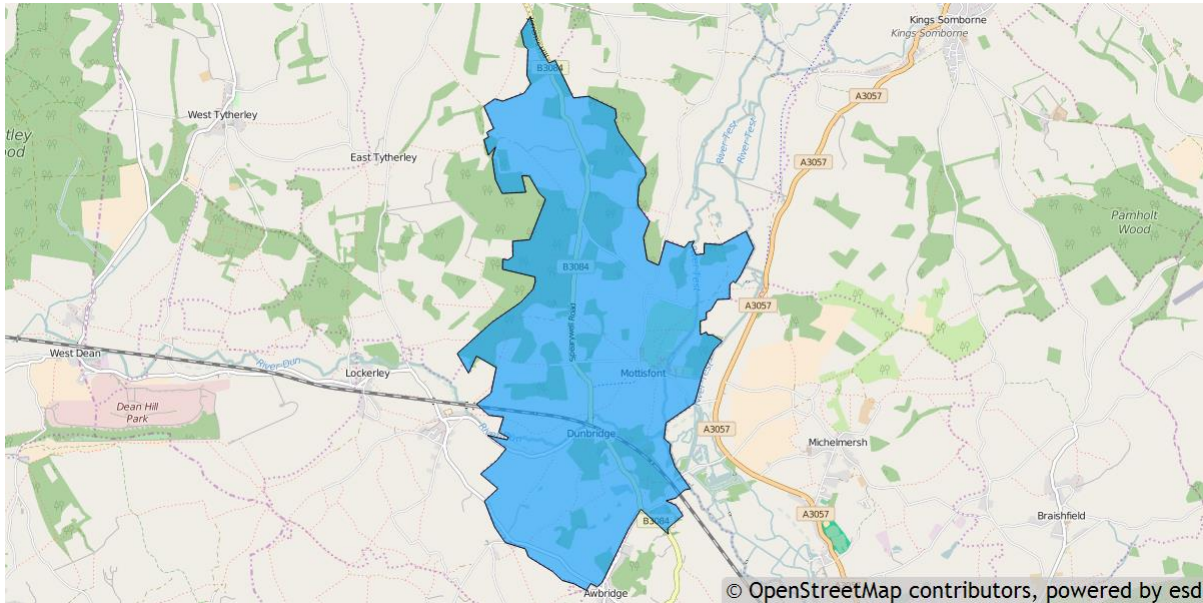


Mottisfont parish profile

This profile provides a summary of the latest available information on the demographic make-up of the Mottisfont parish within Test Valley. It looks at information on topics such as the population structure, economic, housing, health and educational information for the parish.

Mottisfont is one of the 59 parishes in Test Valley. It has an area of 1,186 hectares which represents 1.9% of the total area of Test Valley



Elected representatives

<p>Hampshire County Councillor</p> <p>Cllr Andrew Gibson Home: 01264 861138 Office: 01264 861087 Mobile: 07802 878248 Email: andrew.gibson@hants.gov.uk</p>	<p>Test Valley Borough Councillor</p> <p>Cllr Ian Jeffrey Home: 01794 388872 Email: cllrieffrey@testvalley.gov.uk</p>
<p>Mottisfont Parish Council Chairman</p> <p>Cllr Jeff Channing Daytime: 01794 340555 Email: jeff.channing@btinternet.com</p>	<p>Mottisfont Parish Council Clerk</p> <p>Ms Sue Holder Daytime: 01794 340130 Email: mottisfont.clerk@tesco.net</p>

Residents

The estimated 2016 population of Mottisfont parish is 384. This is expected to fall slightly by 2021 to 379 (a fall of 1.3%).

Mottisfont's resident population is 53.1% female and 46.9% male.

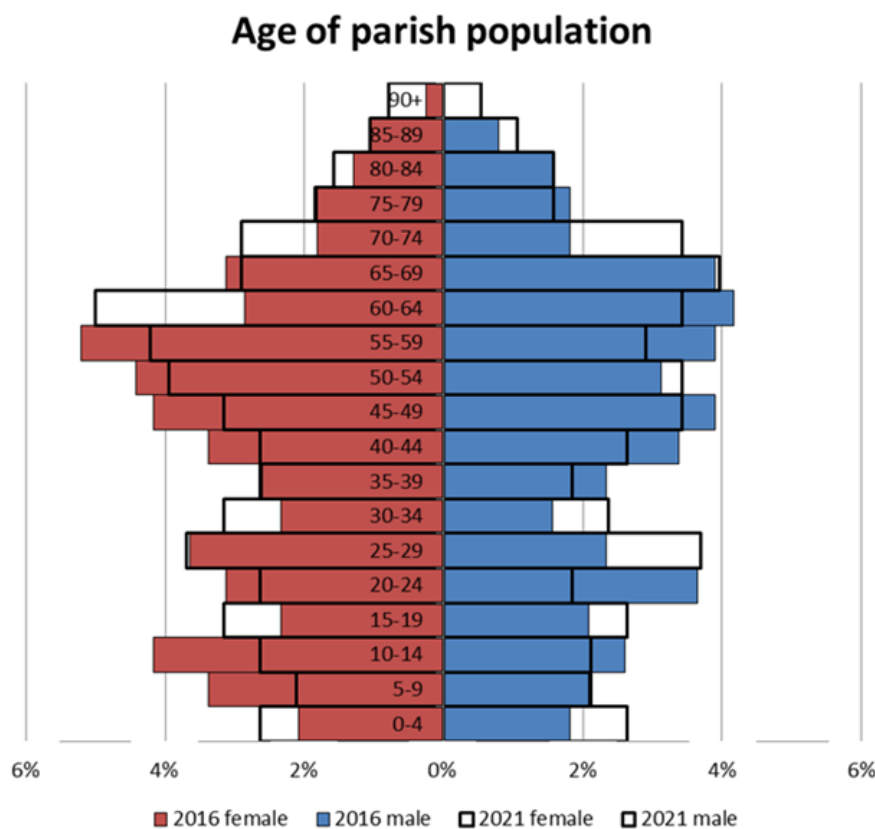
Young people (0-19) currently make up 20.6% of Mottisfont's population; this is expected to fall slightly to 20.1% by 2021.

Young adults (20-39) currently make up 21.6% of the parish's population; this is expected to rise slightly to 21.9% by 2021.

Middle aged residents (40-64) currently account for 38.5% of Mottisfont's population; this is expected to fall slightly to 34.8% by 2021.

Those **aged 65 and over** make up 19.3% of the parish's population; this is expected to rise to 23.2% by 2021.

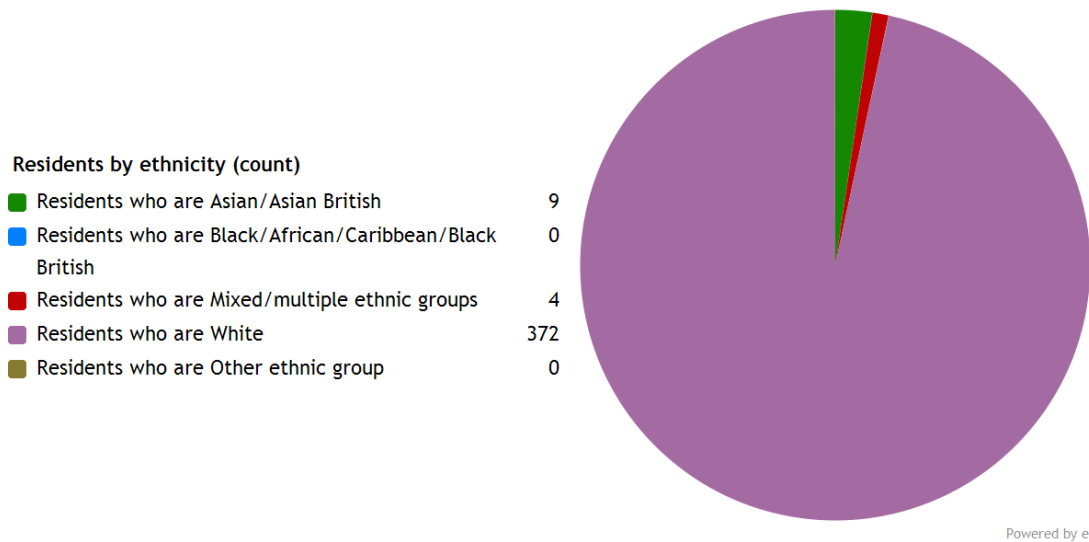
Those **aged 85 and over** currently represent 2.1% of the population; this is expected to rise to 3.4% by 2021.



Ethnicity

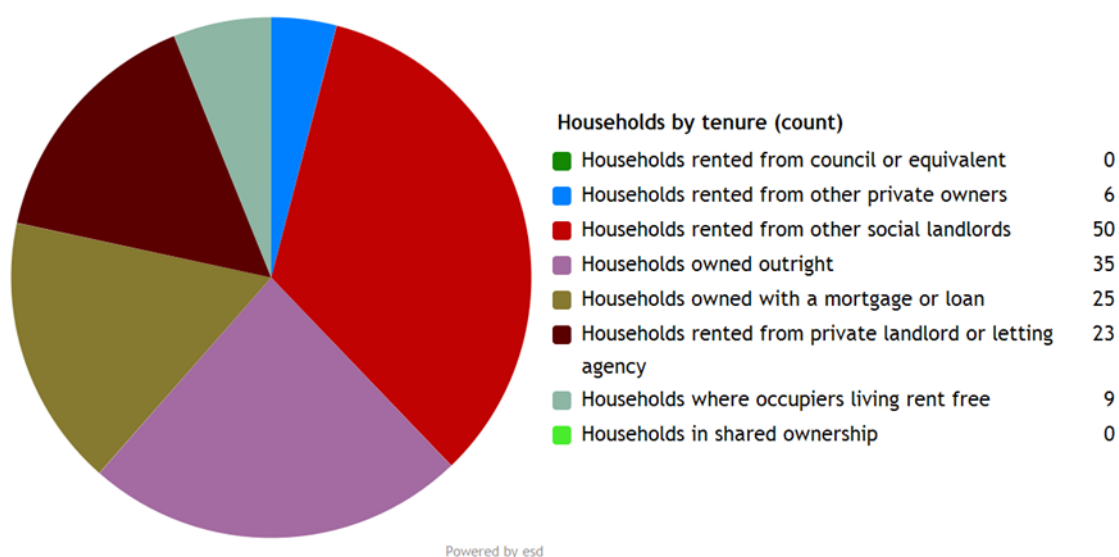
The largest ethnic group in Mottisfont is “White” at 96.6% of the parish's population. That compares with a figure of 95.9% for Test Valley as a whole and 95.0% for Hampshire.

The second largest ethnic group (2.3%) is “Asian/Asian British”. That compares with 2.0% for Test Valley as a whole and 2.7% for Hampshire.



Households

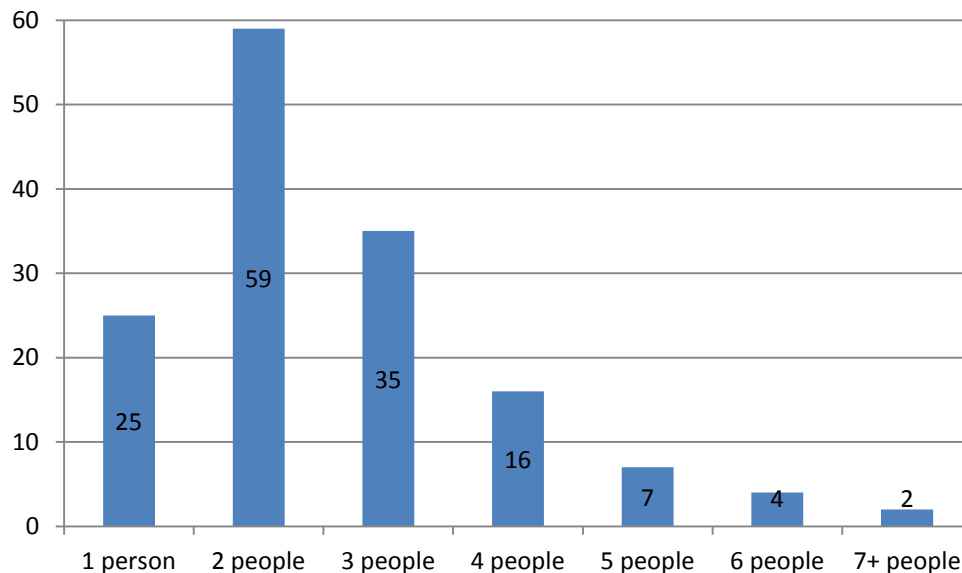
Mottisfont parish has **148 households**, which represent 0.3% of Test Valley's 47,626 households. The household split by tenure is shown below (tenure refers to the financial arrangements under which a home is occupied).



The largest proportion of properties (40.5%) are **owned by those who live in them**. This is lower than the Test Valley average of 70.4%.

19.6% of Mottisfont households are **privately rented**, and 33.8% are **socially rented**. This compares to 12.9% and 14.4% respectively across Test Valley.

Households by number of residents



39.9% of Mottisfont's households are occupied by two people, and 16.9% by one person. 43.2% of the parish's households are occupied by more than two people.

Mottisfont has 18 households with **dependent children aged 0 to 4**. That represents 12.2% of the parish's households.

52 households in the parish have **dependent children of all ages**. That represents 35.1% of the parish's households.

House prices

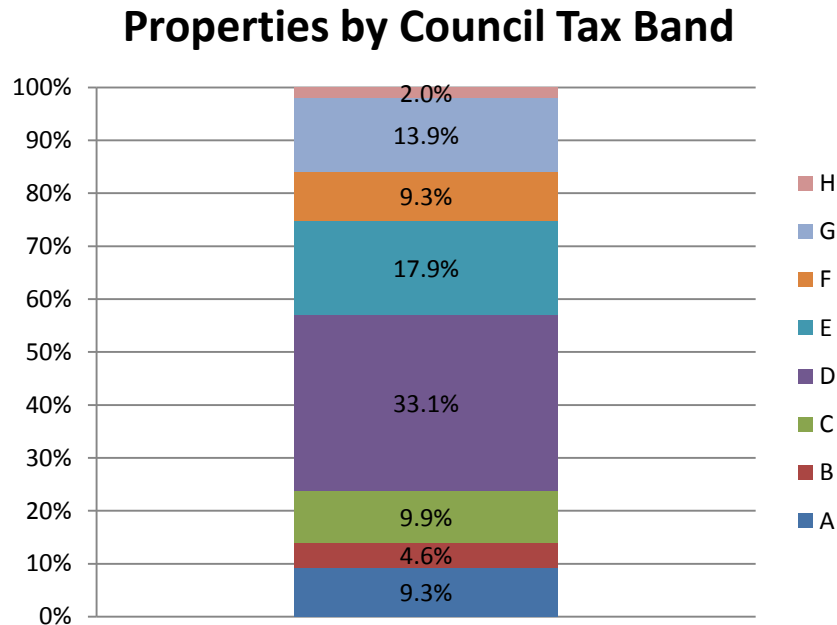
According to Zoopla, the average house price in Mottisfont (as of March 2016) is **£949,550**. This has increased by 23.6% in the last five years.

According to Zoopla, the average house price in Dunbridge (as of March 2016) is **£419,207**. This has increased by 23.6% in the last five years.

According to Zoopla, the average house price in Kimbridge (as of March 2016) is **£504,437**. This has increased by 23.6% in the last five years.

It is estimated that **39.4% of households in central rural Test Valley cannot afford to buy a private property**. The central rural area includes the wards of Dun Valley, Blackwater, Broughton and Stockbridge, and Kings Somborne and Michelmersh.

Council Tax Bands



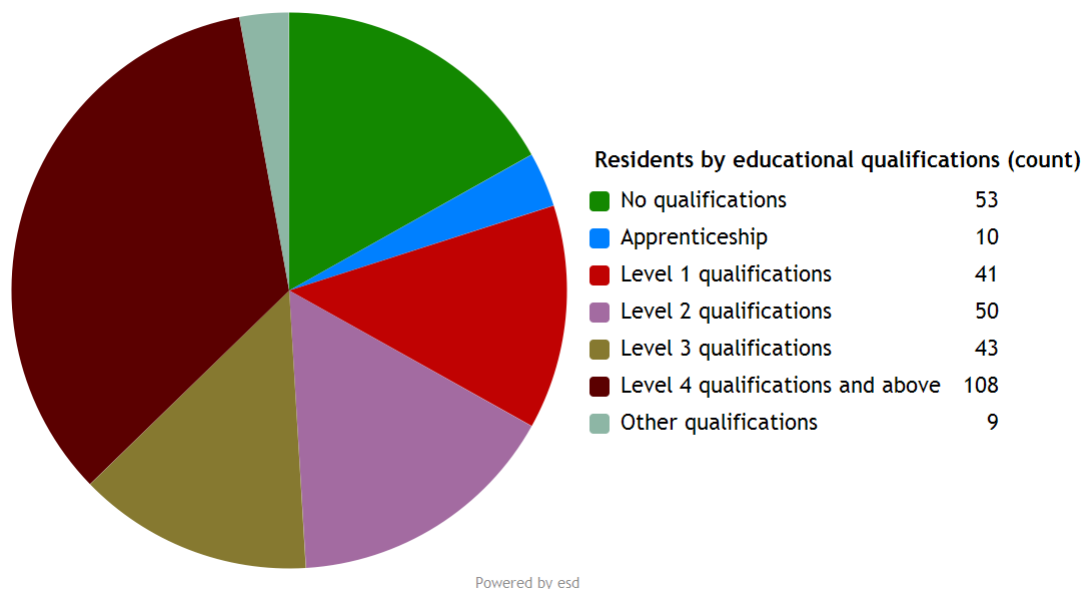
13.9% of Mottisfont properties are at the **lower** end of the property market (Bands A and B). This compares to 22.2% for Test Valley as a whole.

60.9% of the parish's properties are in the **middle** range of the property market (Bands C to E). This compares to 60.8% across the whole borough.

25.2% of Mottisfont's properties are at the **higher** end of the property market (Bands F to H). This compares to 17.1% of all Test Valley properties.

Education

28.1% of Mottisfont's residents have achieved **level 4 qualifications** and above compared to 30.5% in Test Valley as a whole. 13.8% of Mottisfont's residents have **no qualifications** compared to 18.4% in Test Valley.



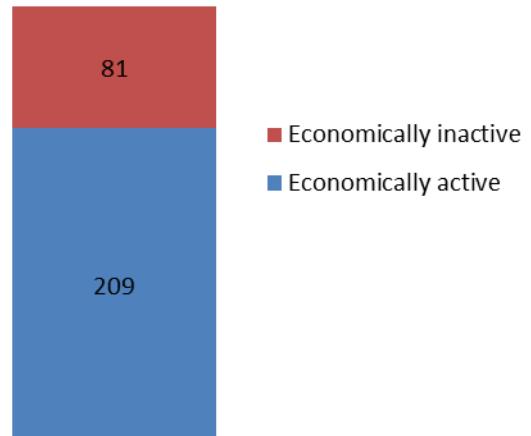
No qualifications	No academic or professional qualifications.
Level 1	1+O level passes, 1+CSE/GCSE any grades, NVQ level 1, Basic/Essential skills, NVQ Level 1.
Level 2	5+O level passes, 5+GCSEs (grades A*-C), 1 A level, 2-3 AS levels, City and Guilds Craft, NVQ level 2.
Level 3	2+A levels, Higher School Certificate, NVQ level 3, City and Guilds Advanced Craft, BTEC National.
Level 4/5	Degree (e.g. BA, BSc) higher degree (e.g. MA, PhD, PGCE), NVQ levels 4 and 5, qualified teacher, nurse or accountant status, BTEC Higher.
Other qualification	Level unknown, vocational/work-related qualifications, foreign qualifications.

Employment

72.1% of Mottisfont residents aged 16-74 are **economically active**, compared to 73.4% of Test Valley residents. This includes people in full, part and self-employment, those who are actively seeking a job, and full-time students.

The remaining 28.9% of residents aged 16-74 are **economically inactive**, compared to 27.9% of Test Valley residents. This includes people who are retired, long-term sick or disabled, or who look after the home and family.

Economic activity (count)

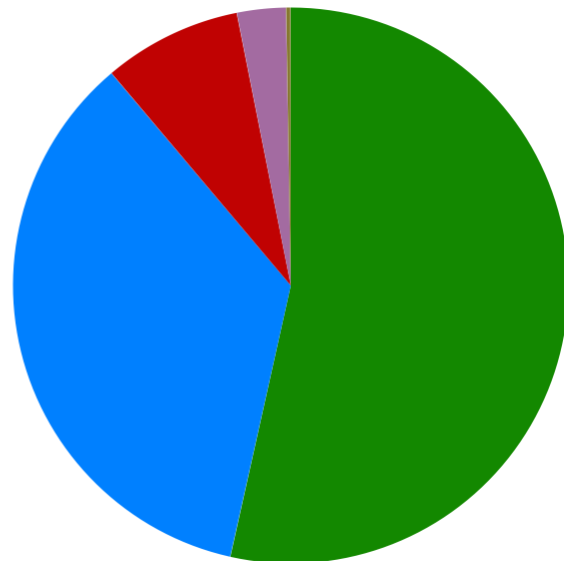


Health

Mottisfont has 11 (2.9%) residents that report being in bad health and 1 (0.3%) resident that report being in very bad health.

Residents by level of health (count)

Very good health	206
Good health	136
Fair health	31
Bad health	11
Very bad health	1



Powered by esd

Community plans

Details of any community planning exercises your parish is undertaking can be added here. Please get in touch with the Policy Team at the email address below and we will be more than happy to add information at your request.

Local facilities

Food stores	None
Other shops	None
Primary schools	None
Secondary schools	None
Health facilities	None
Leisure facilities	Mottisfont recreation ground
Public houses	The Bear and Ragged Staff
Community facilities	Village Hall
Churches	St Andrew's Church
Other facilities	Mottisfont Social Club Mottisfont Abbey and gardens
Local recycling centres	Mottisfont Social Club

Public and community transport

Mottisfont and Dunbridge Rail station

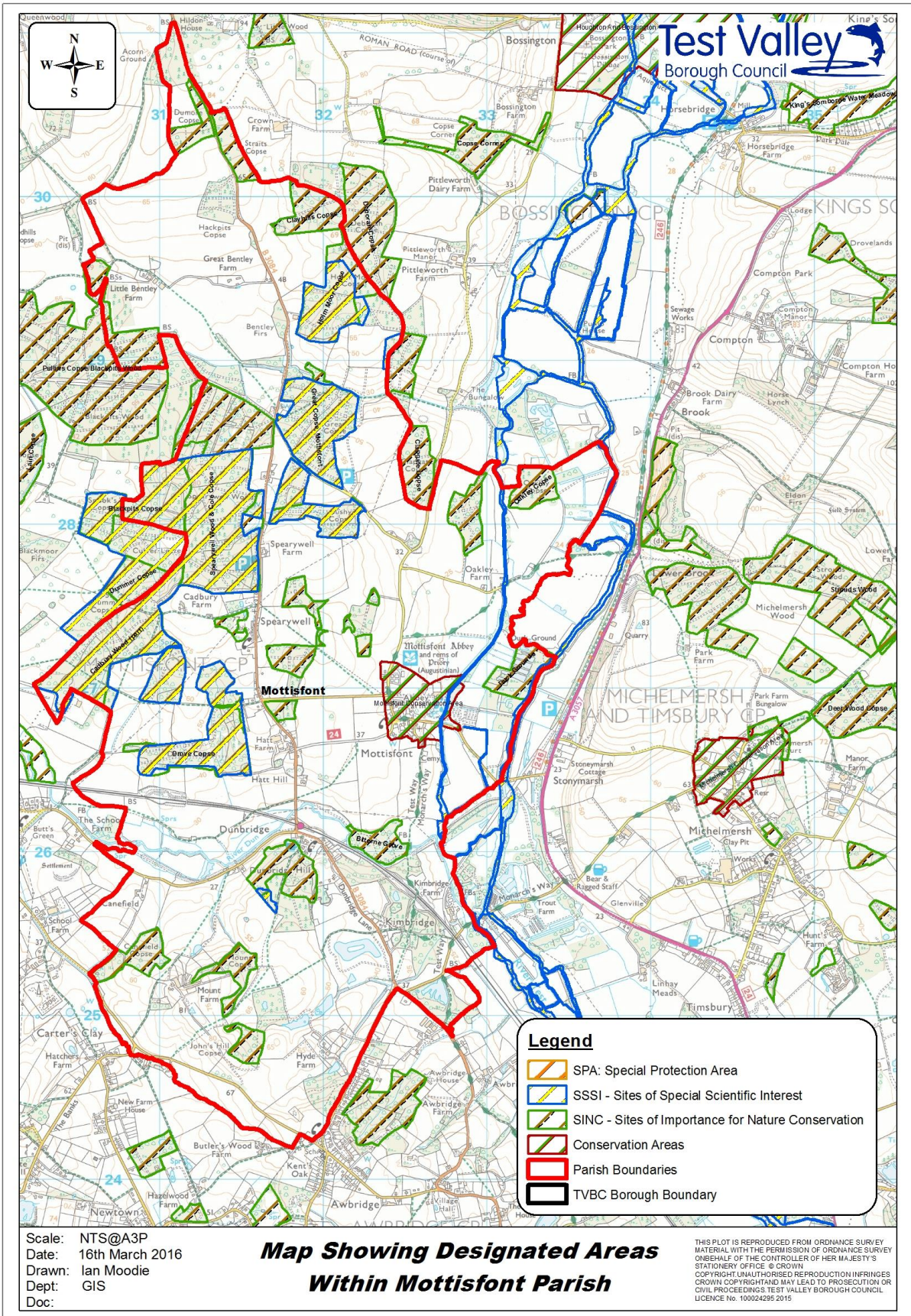
This train service between Salisbury and Southampton which stops at Romsey. This then connects with the national rail network.

More information can be found online at

<http://bit.ly/2efjeCP>

Further community transport information for Test Valley can be found on Hampshire County Council's website:

<http://bit.ly/2ecJuLK>



Additional information

The information in this profile has been prepared by Test Valley Borough Council's Policy Team in partnership with the Local Government Association. If you would like further information, please contact the Policy Team on 01264 368000 or policyteam@testvalley.gov.uk, and we will be happy to work with you to provide a more detailed profile.

This profile contains key information for you to use to contribute to the development of a Neighbourhood Plan or other community project. If you know of any additional information about the parish that may be of use (for example, information on local facilities) please get in touch and we will endeavor to work with you to add to or change the profile.

Please note that most of the data featured in this profile is taken from the 2011 Census, whilst the population data is taken from Hampshire County Council's 2016 Small Area Population Forecast. Therefore, there is some discrepancy in population figures.