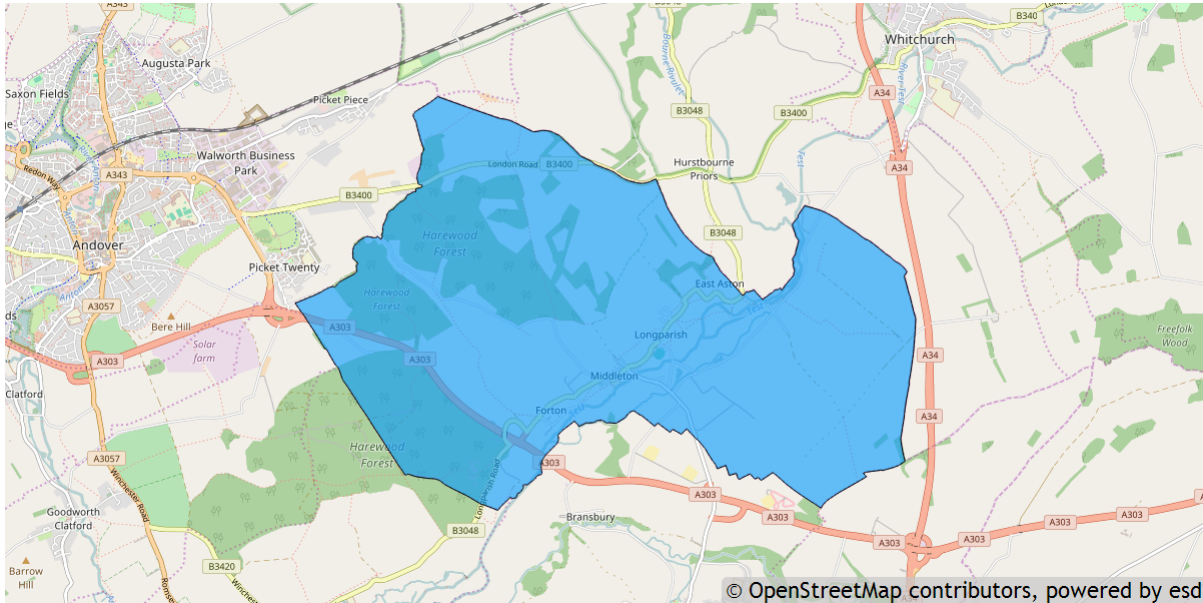


Longparish parish profile

This profile provides a summary of the latest available information on the demographic make-up of the Longparish parish within Test Valley. It looks at information on topics such as the population structure, economic, housing, health and educational information for the parish.

Longparish is one of the 59 parishes in Test Valley. It has an area of 2,157 hectares which represents 3.4% of the total area of Test Valley.



Elected representatives

<p>Hampshire County Councillor</p> <p>Cllr Andrew Gibson Home: 01264 861138 Office: 01264 861087 Mobile: 07802 878248 Email: andrew.gibson@hants.gov.uk</p>	<p>Test Valley Borough Councillors</p> <p>Cllr David Drew Home: 01264 357024 Mobile: 07768 244456 Email: cldrddrew@testvalley.gov.uk</p>
<p>Longparish Parish Council Chairman</p> <p>Mrs Christian Dryden Tel: 01264 720398 Email: chairman@longparish.org.uk</p>	<p>Longparish Parish Council Clerk</p> <p>Mrs Sally Lawman Home: 01264 738716 Email: clerk@longparish.org.uk</p>

Residents

The estimated 2016 population of Longparish parish is 732. This is expected to fall by 2021 to 692 (a fall of 5.5%).

Longparish 's resident population is 51.8% female and 48.2% male.

Young people (0-19) currently make up 23.0% of Longparish's population; this is expected to fall to 21.7% by 2021.

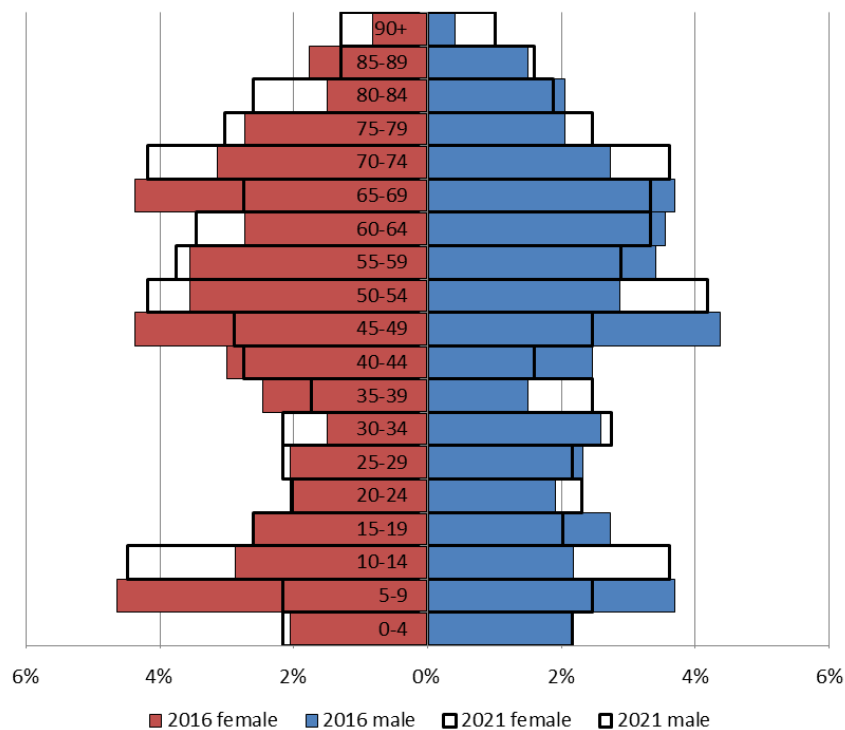
Young adults (20-39) currently make up 16.4% of the parish's population; this is expected to rise to 17.8% by 2021.

Middle aged residents (40-64) currently account for 33.9% of Longparish's population; this is expected to drop to 31.5% by 2021.

Those **aged 65 and over** make up 26.8% of the parish's population; this is expected to rise to 29.0% by 2021.

Those **aged 85 and over** currently represent 4.5% of the population; this is expected to rise slightly to 5.2% by 2021.

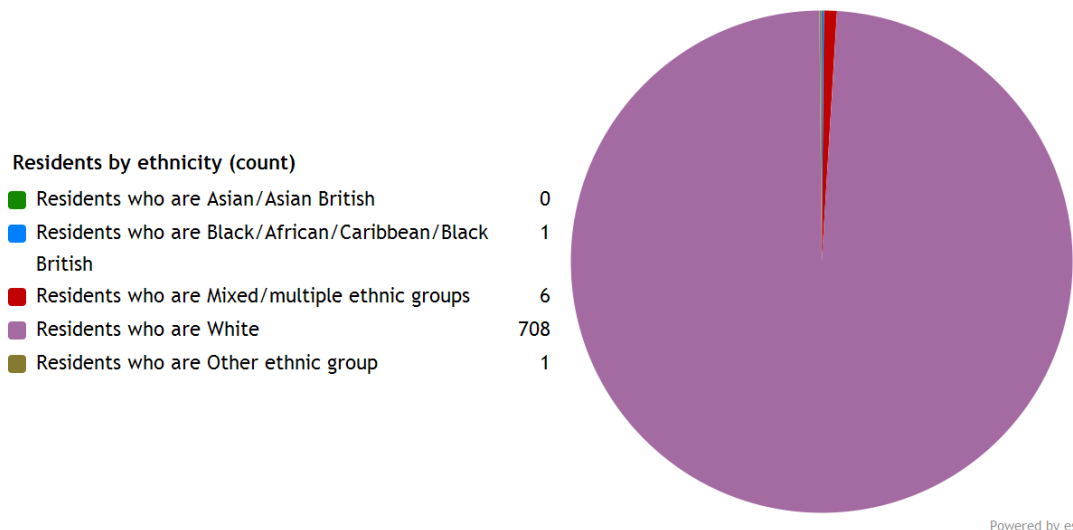
Age of parish population



Ethnicity

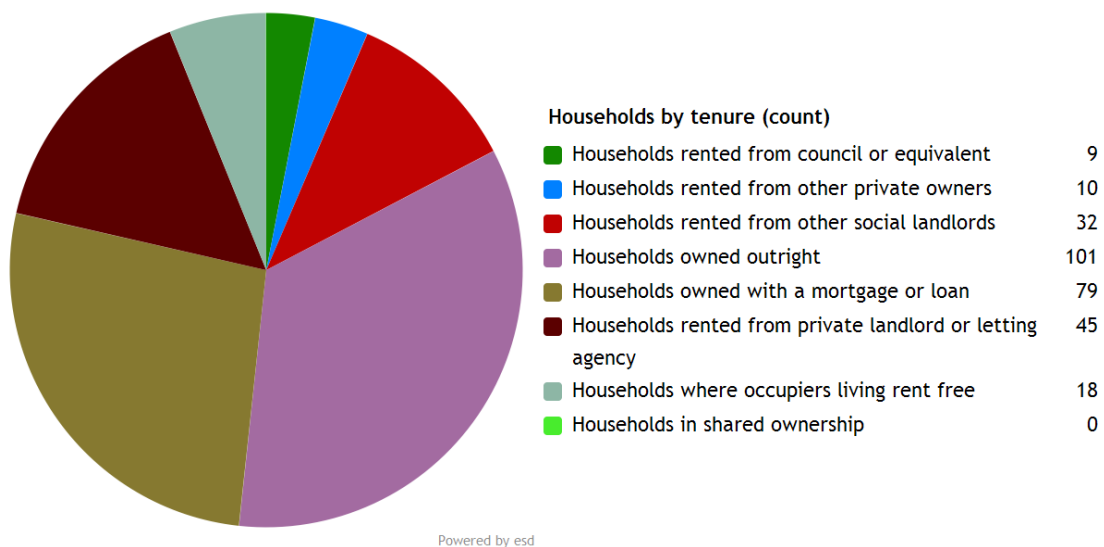
The largest ethnic group in Longparish is “White” at 98.9% of the parish's population. That compares with a figure of 95.9% for Test Valley as a whole and 95.0% for Hampshire.

The second largest ethnic group (0.9%) is “Mixed/multiple ethnic groups. That compares with 1.3% for Test Valley as a whole and 1.4% for Hampshire.



Households

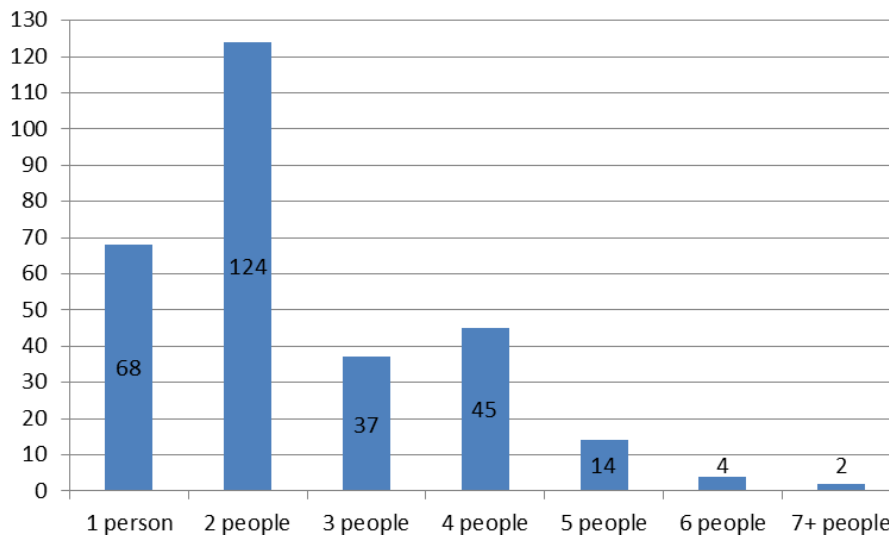
Longparish parish has **294 households**, which represent 0.6% of Test Valley's 47,626 households. The household split by tenure is shown below (tenure refers to the financial arrangements under which a home is occupied).



The majority of properties (61.2 %) are **owned by those who live in them**. This is lower than the Test Valley average of 70.4%.

18.7% of Longparish households are **privately rented**, and 13.9% are **socially rented**. This compares to 12.9% and 14.4% respectively across Test Valley.

Households by number of residents



42.2% of Longparish's households are occupied by two people, and 23.1% by one person. 34.7% of the parish's households are occupied by more than two people.

Longparish has 38 households with **dependent children aged 0 to 4**. That represents 13.0% of the parish's households.

78 households in the parish have **dependent children of all ages**. That represents 26.5% of the parish's households.

House prices

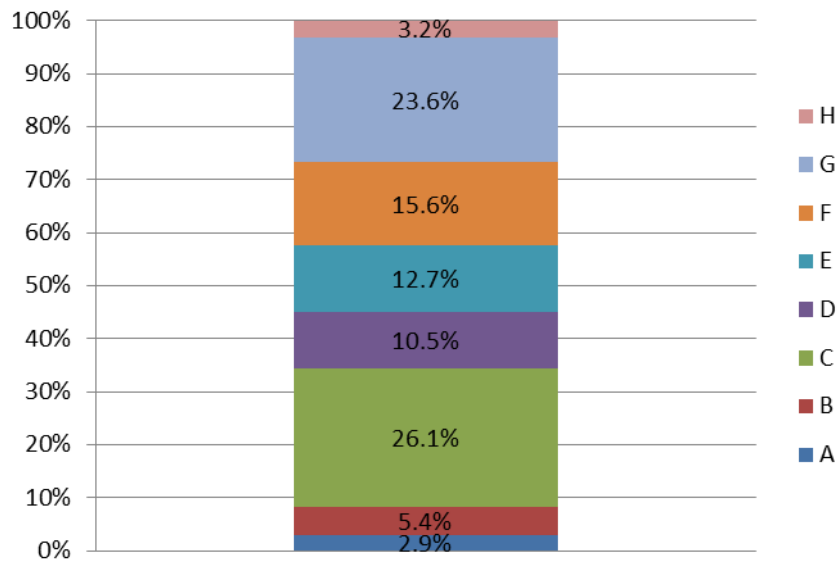
According to Zoopla, the average house prices (as of September 2016) in the villages of Longparish parish are:

- In **Longparish** the average house price is **£640,202**. This has increased by 23.1% in the last five years.
- In **Forton** the average house price is **£822,750**. This has increased by 23.1% in the last five years.

It is estimated that **38.2% of households in north rural Test Valley cannot afford to buy a private property**. The north rural area includes the wards of Harewood, Anna, Amport, Bourne Valley, Over Wallop and Penton Bellinger.

Council Tax Bands

Properties by Council Tax Band



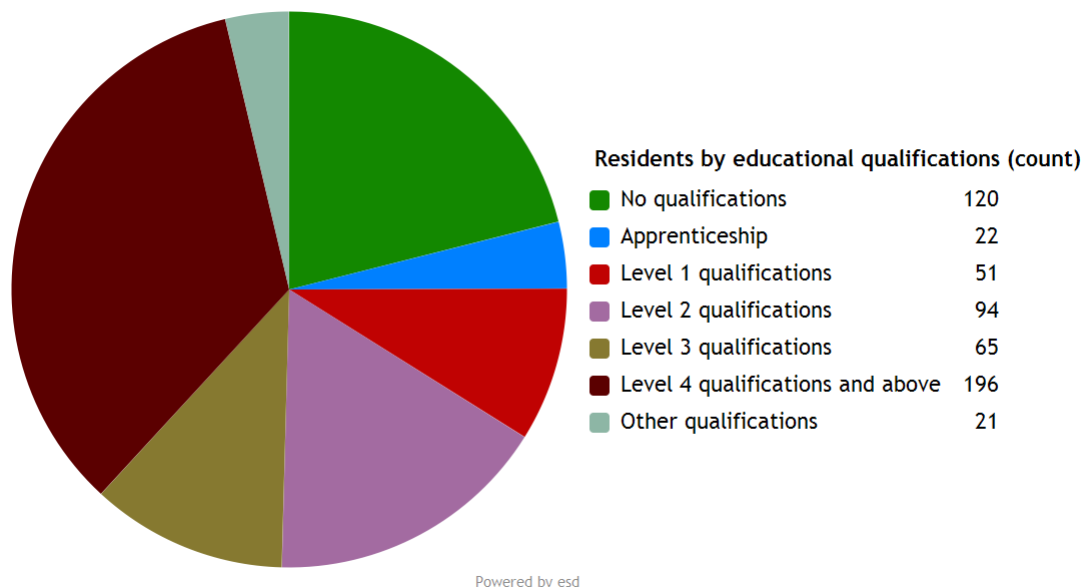
8.3% of Longparish properties are at the **lower** end of the property market (Bands A and B). This compares to 22.2% for Test Valley as a whole.

49.3% of the parish's properties are in the **middle** range of the property market (Bands C to E). This compares to 60.8% across the whole borough.

42.4% of Longparish's properties are at the **higher** end of the property market (Bands F to H). This compares to 17.1% of all Test Valley properties.

Education

34.5% of Longparish's residents have achieved **level 4 qualifications** and above compared to 30.5% in Test Valley as a whole. 21.1% of Longparish's residents have **no qualifications** compared to 18.4% in Test Valley.



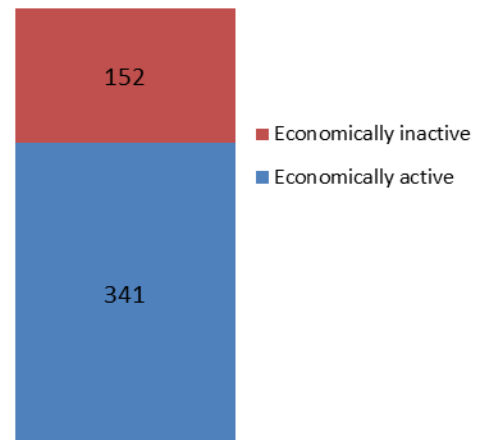
No qualifications	No academic or professional qualifications.
Level 1	1+O level passes, 1+CSE/GCSE any grades, NVQ level 1, Basic/Essential skills, NVQ Level 1.
Level 2	5+O level passes, 5+GCSEs (grades A*-C), 1 A level, 2-3 AS levels, City and Guilds Craft, NVQ level 2.
Level 3	2+A levels, Higher School Certificate, NVQ level 3, City and Guilds Advanced Craft, BTEC National.
Level 4/5	Degree (e.g. BA, BSc) higher degree (e.g. MA, PhD, PGCE), NVQ levels 4 and 5, qualified teacher, nurse or accountant status, BTEC Higher.
Other qualification	Level unknown, vocational/work-related qualifications, foreign qualifications.

Employment

69.2% of Longparish residents aged 16-74 are **economically active**, compared to 73.4% of Test Valley residents. This includes people in full, part and self-employment, those who are actively seeking a job, and full-time students.

The remaining 30.8% of residents aged 16-74 are **economically inactive**, compared to 26.6% of Test Valley residents. This includes people who are retired, long-term sick or disabled, or who look after the home and family.

Economic activity (count)

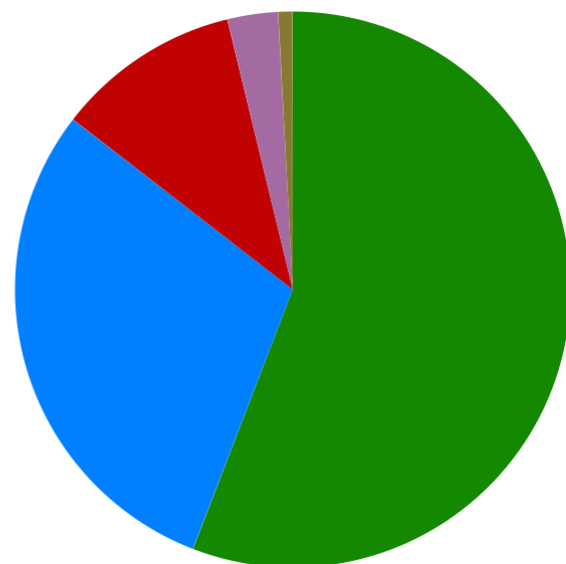


Health

Longparish has 21 (2.9%) residents that report being in **bad health** and 6 (0.8%) residents that report being in **very bad health**.

Residents by level of health (count)

Very good health	400
Good health	212
Fair health	77
Bad health	21
Very bad health	6



Powered by esd

Community plans

Longparish has a **Village Design Statement** which was adopted by Test Valley Borough Council in April 2000 as Supplementary Planning Guidance. The design statement provides a description of the natural and man-made features of the village of Longparish that are regarded by the members of the community as particularly distinctive. The document provides a guide to ensure that future development and change is managed to respect and preserve the character and distinctiveness of the village. It should thus contribute positively to protecting and enhancing the special nature and qualities of the community that is Longparish today.

This document is available on the Council's website at the following page:

<http://bit.ly/2ed5Jl1>

Longparish has a **Parish Plan**, which is a document that sets out what is important to the local community. It was published in 2005, and covers a wide range of issues including social, economic and environmental issues, and can be found online:

<http://bit.ly/2en8oJ4>

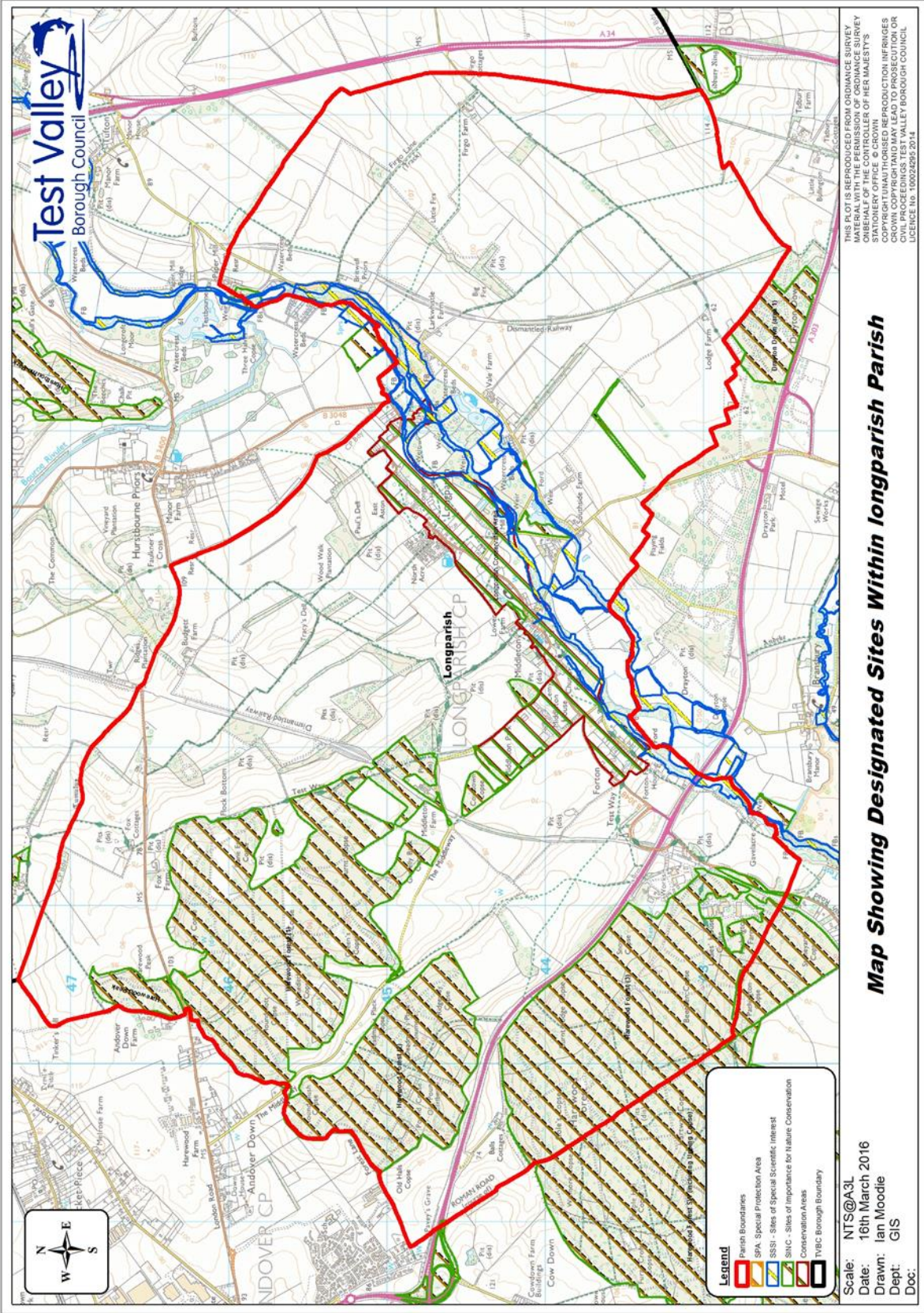
Details of any community planning exercises your parish is undertaking can be added here. Please get in touch with the Policy Team at the email address below and we will be more than happy to add information at your request.

Local facilities

Food stores	Yes
Other shops	Post Office
Primary schools	Longparish Church of England Primary School
Secondary schools	None
Health facilities	None
Leisure facilities	Longparish Cricket Ground Children's play area
Public houses	The Cricketers Inn
Community facilities	Longparish Village Hall
Churches	St Nicholas Church
Local recycling centres	The Cricketers Inn

Public and community transport

<p>C4 Cango bus service</p> <p>This bus service runs between Andover and Barton Stacey via several Test Valley villages, including Longparish.</p> <p>More information about the route and the timetable can be found online at:</p> <p>http://bit.ly/2enaBnK</p>	<p>Andover Dial-a-Ride</p> <p>Dial-a-Ride provides door-to-door transport. On alternate Wednesday and Thursday mornings. The service is available to anyone who has no access to, or experiences difficulty with using public bus services. The service takes residents into Andover and Stockbridge to access local amenities.</p> <p>More information can be found online at:</p> <p>http://bit.ly/2ezKzud</p>
<p>Whitchurch Neighbourcare</p> <p>Whitchurch Neighbourcare is a voluntary car scheme which provides a range of transport services and operates between Hurstbourne Priors, St Mary Bourne, Whitchurch and Longparish.</p> <p>Further information can be found on the community website.</p> <p>http://bit.ly/2ennn62</p>	<p>Further community transport information for Test Valley can be found on Hampshire County Council's website:</p> <p>http://bit.ly/2ecJuLK</p>



Additional information

The information in this profile has been prepared by Test Valley Borough Council's Policy Team in partnership with the Local Government Association. If you would like further information, please contact the Policy Team on 01264 368000 or policyteam@testvalley.gov.uk, and we will be happy to work with you to provide a more detailed profile.

This profile contains key information for you to use to contribute to the development of a Neighbourhood Plan or other community project. If you know of any additional information about the parish that may be of use (for example, information on local facilities) please get in touch and we will endeavor to work with you to add to or change the profile.

Please note that most of the data featured in this profile is taken from the 2011 Census, whilst the population data is taken from Hampshire County Council's 2016 Small Area Population Forecast. Therefore, there is some discrepancy in population figures.