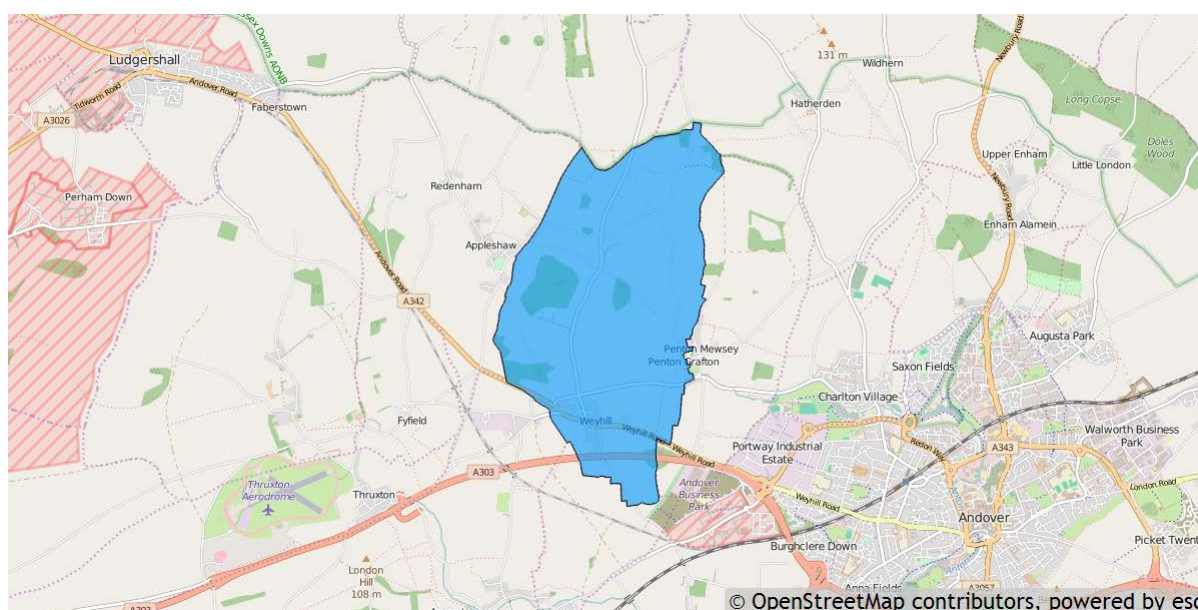


Penton Grafton parish profile

This profile provides a summary of the latest available information on the demographic make-up of the Penton Grafton parish within Test Valley. It looks at information on topics such as the population structure, economic, housing, health and educational information for the parish.

Penton Grafton is one of the 59 parishes in Test Valley. It has an area of 766 hectares which represents 1.2% of the total area of Test Valley.



Elected representatives

<p>Hampshire County Councillor</p> <p>CLlr Zilliah Brooks Home: 01264 335388 Email: zilliah.brooks@hants.gov.uk</p>	<p>Test Valley Borough Councillors</p> <p>CLlr Phil Lashbrook Home: 01264 773588 Mobile: 07766 708060 Email: cllrplashbrook@testvalley.gov.uk</p> <p>CLlr Pam Mutton Home: 01264 396756 Email: cllrpmutton@testvalley.gov.uk</p>
<p>Penton Grafton Parish Council Chairman</p> <p>CLlr Gary Light Daytime: 01264 771041 Email: garylight1@aol.com</p>	<p>Penton Grafton Parish Council Clerk</p> <p>Mr R Waterman Daytime: 01264 772460 Mobile: 07777 678485 Email: richard.waterman150@btinternet.com</p>

Residents

The estimated 2016 population of Penton Grafton parish is 822. This is expected to increase to 825 by 2021 (an increase of 0.4%).

Penton Grafton's resident population is 50.9% female and 49.1% male.

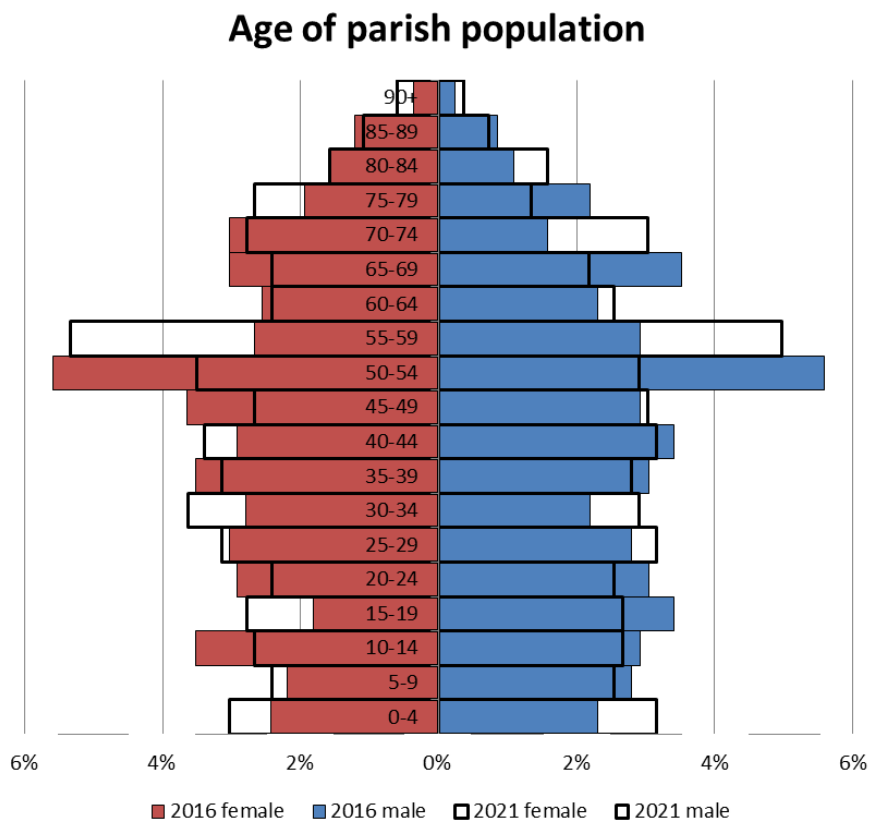
Young people (0-19) currently make up 21.4% of Penton Grafton's population; this is expected to increase slightly to 21.9% by 2021.

Young adults (20-39) currently make up 23.4% of the parish's population; this is expected to rise slightly to 23.8% by 2021.

Middle aged residents (40-64) currently account for 34.5% of Penton Grafton's population; this is expected to fall slightly to 33.9% by 2021.

Those **aged 65 and over** make up 20.7% of the parish's population; this is expected to fall slightly to 20.4% by 2021.

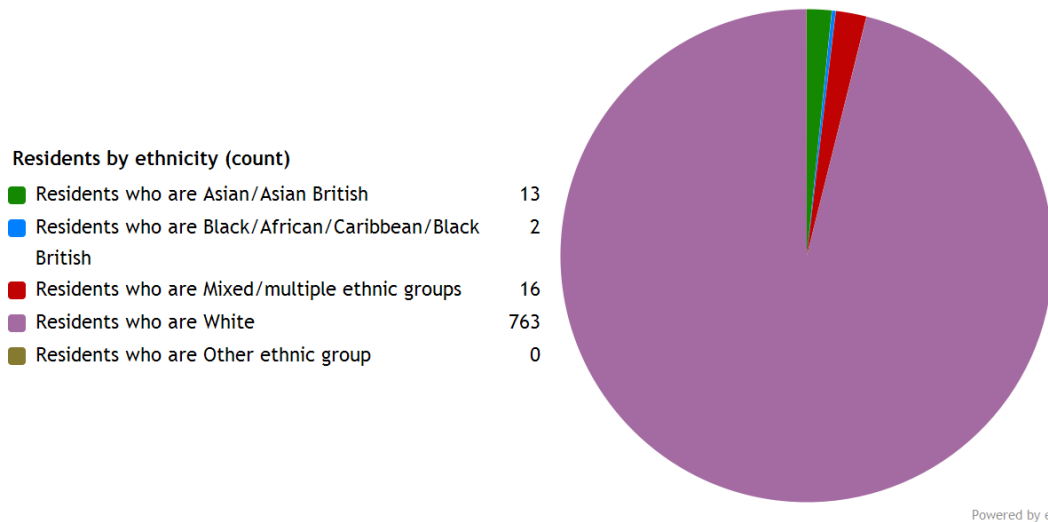
Those **aged 85 and over** currently represent 2.7% of the population; this is expected to rise slightly to 2.8% by 2021.



Ethnicity

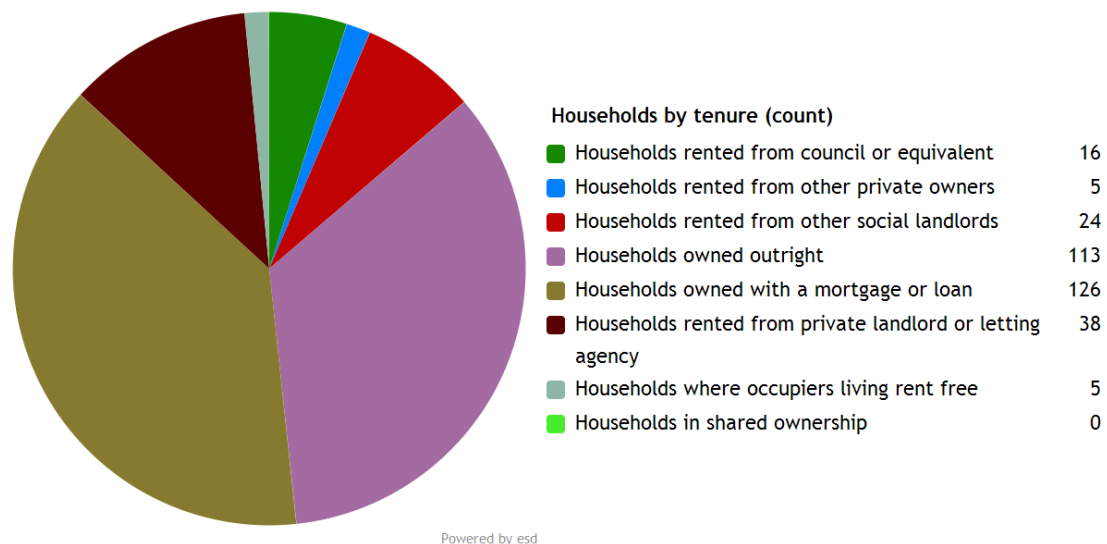
The largest ethnic group in Penton Grafton is “White” at 96.1% of the parish's population. That compares with a figure of 95.9% for Test Valley as a whole and 95.0% for Hampshire.

The second largest ethnic group (2.0%) is “Mixed/multiple ethnic groups”. That compares with 1.3% for Test Valley as a whole and 1.4% for Hampshire.



Households

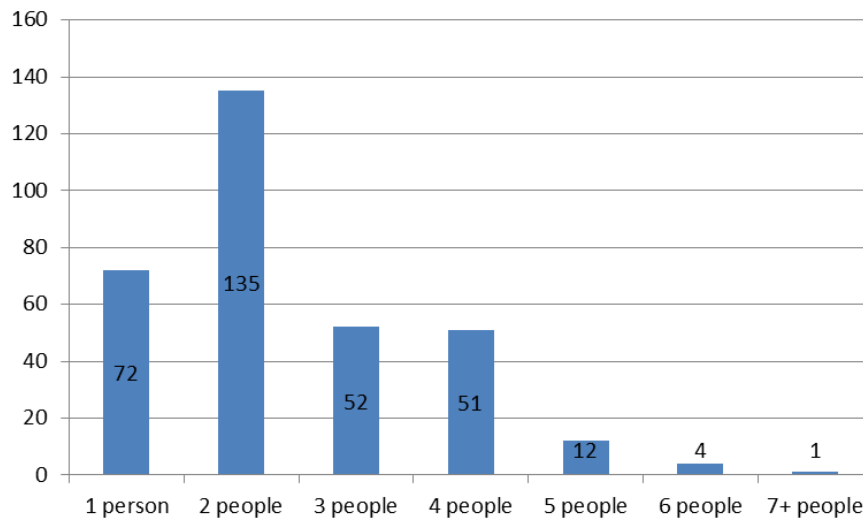
Penton Grafton parish has **327 households**, which represent 0.7% of Test Valley's 47,626 households. The household split by tenure is shown below (tenure refers to the financial arrangements under which a home is occupied).



The majority of properties (73.1%) are **owned by those who live in them**. This is higher than the Test Valley average of 70.4%.

13.1% of Penton Grafton households are **privately rented**, and 12.2% are **socially rented**. This compares to 12.9% and 14.4% respectively across Test Valley.

Households by number of residents



22.0% of Penton Grafton's households are occupied by one person, and 41.3% by two people. 36.7% of the parish's households are occupied by more than two people.

Penton Grafton has 30 households with **dependent children aged 0 to 4**. That represents 9.2% of the parish's households.

98 households in the parish have **dependent children of all ages**. That represents 30.0% of the parish's households.

House prices

According to Zoopla, the average house price in **Penton Grafton** (as of September 2016) is **£572,487**. This has increased by 24.7% in the last five years.

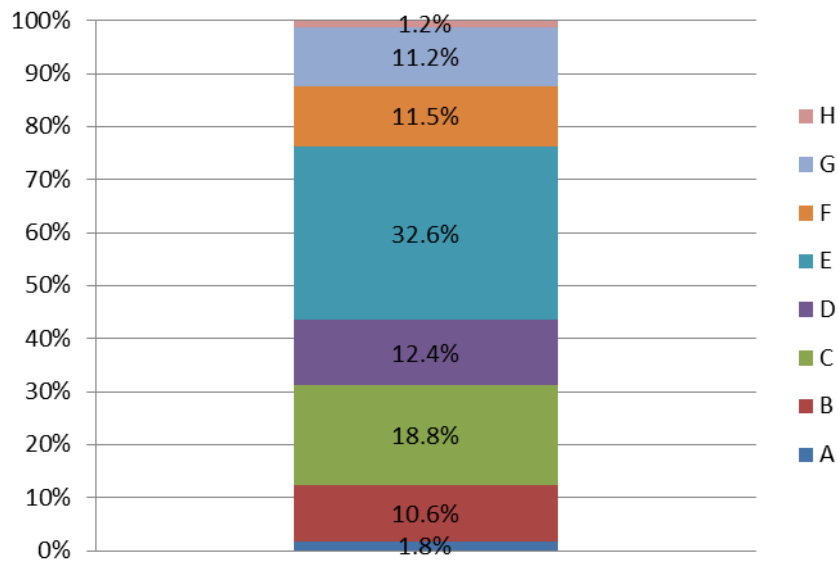
According to Zoopla, the average house price in **Weyhill** (as of September 2016) is **£409,636**. This has increased by 24.7% in the last five years.

According to Zoopla, the average house price in **Ragged Appleshaw** (as of September 2016) is **£391,886**. This has increased by 24.7% in the last five years.

It is estimated that **38.2% of households in north rural Test Valley cannot afford to buy a private property**. The north rural area includes the wards of Penton Bellingier, Amport, Anna, Bourne Valley, Harewood, and Over Wallop.

Council Tax Bands

Properties by Council Tax Band



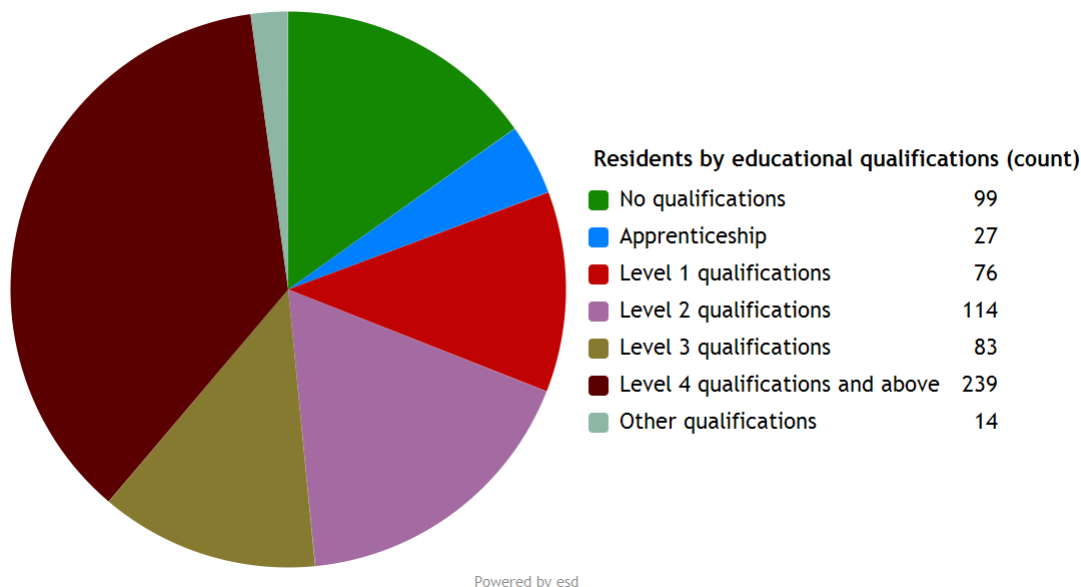
12.4% of Penton Grafton properties are at the **lower** end of the property market (Bands A and B). This compares to 22.2% for Test Valley as a whole.

63.8% of the parish's properties are in the **middle** range of the property market (Bands C to E). This compares to 60.8% across the whole borough.

23.9% of the parish's properties are at the **higher** end of the property market (Bands F to H). This compares to 17.1% of all Test Valley properties.

Education

36.7% of Penton Grafton's residents have achieved **level 4 qualifications** and above compared to 30.5% in Test Valley as a whole. 15.2% of Penton Grafton's residents have **no qualifications** compared to 18.4% in Test Valley.



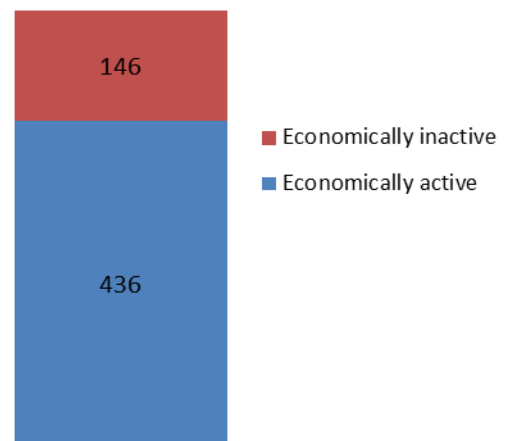
No qualifications	No academic or professional qualifications.
Level 1	1+O level passes, 1+CSE/GCSE any grades, NVQ level 1, Basic/Essential skills, NVQ Level 1.
Level 2	5+O level passes, 5+GCSEs (grades A*-C), 1 A level, 2-3 AS levels, City and Guilds Craft, NVQ level 2.
Level 3	2+A levels, Higher School certificate, NVQ level 3, City and Guilds Advanced Craft, BTEC National.
Level 4/5	Degree (e.g. BA, BSc) higher degree (e.g. MA, PhD, PGCE), NVQ levels 4 and 5, qualified teacher, nurse or accountant status, BTEC Higher.
Other qualification	Level unknown, vocational/work-related qualifications, foreign qualifications.

Employment

74.9% of Penton Grafton residents aged 16-74 are **economically active**, compared to 73.4% of Test Valley residents. This includes people in full, part and self-employment, those who are actively seeking a job, and full-time students.

The remaining 25.1% of residents aged 16-74 are **economically inactive**, compared to 26.6% of Test Valley residents. This includes people who are retired, long-term sick or disabled, or who look after the home and family.

Economic activity (count)

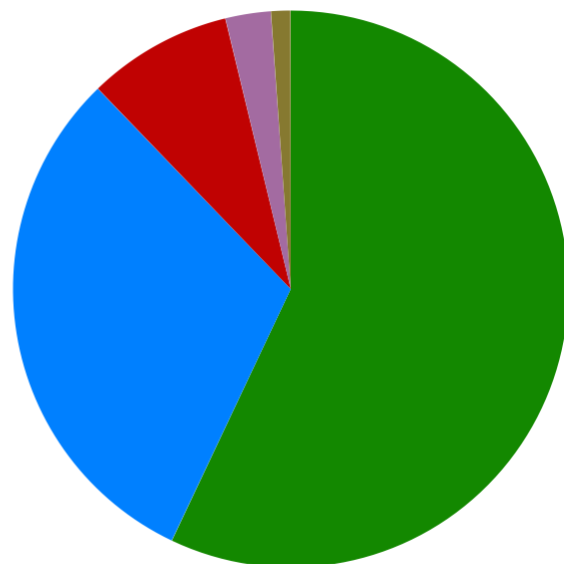


Health

Penton Grafton has 21 (2.6%) residents that report being in **bad health** and 9 (1.1%) residents that report being in **very bad health**.

Residents by level of health (count)

Very good health	453
Good health	244
Fair health	67
Bad health	21
Very bad health	9



Powered by esd

Community plans

Penton Grafton has a **Village Design Statement** which was adopted by Test Valley Borough Council in April 2003 as Supplementary Planning Guidance.

The advisory document aims to draw attention to what is special about Penton Grafton and to the features that give it a unique character. The aim is to give residents a say in the future of their village, to offer guidelines on conserving its particular qualities and addressing any current concerns, and to contribute towards the improvement of rural design in general.

This document is available on the Council's website at the following page:

<http://bit.ly/2dUzqUN>

Details of any community planning exercises your parish is undertaking can be added here. Please get in touch with the Policy Team at the email address below and we will be more than happy to add information at your request.

Local facilities

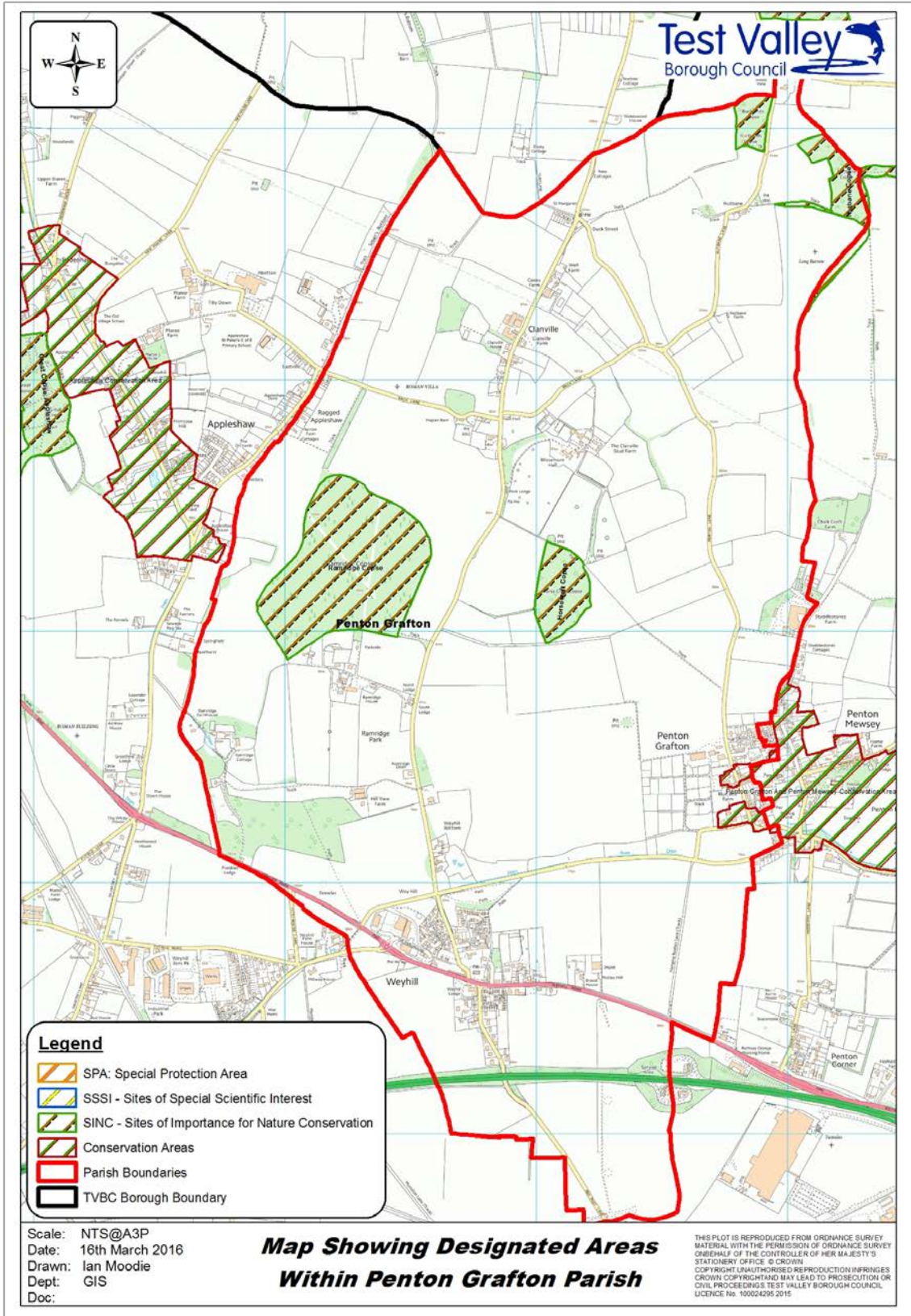
Food stores	Yes
Other shops	Yes
Primary schools	None
Secondary schools	None
Health facilities	None
Leisure facilities	None
Public houses	The White Hart Inn The Weyhill Fair
Community facilities	Weyhill Village Hall
Churches	Weyhill Church
Local recycling centres	Weyhill Fair Public House

Public and community transport

There currently is no form of community or public transport in Penton Grafton.

Further community transport information for Test Valley can be found on Hampshire County Council's website:

<http://bit.ly/2ecJuLK>



Additional information

The information in this profile has been prepared by Test Valley Borough Council's Policy Team in partnership with the Local Government Association. If you would like further information, please contact the Policy Team on 01264 368000 or policyteam@testvalley.gov.uk, and we will be happy to work with you to provide a more detailed profile.

This profile contains key information for you to use to contribute to the development of a Neighbourhood Plan or other community project. If you know of any additional information about the parish that may be of use (for example, information on local facilities) please get in touch and we will endeavor to work with you to add to or change the profile.

Please note that most of the data featured in this profile is taken from the 2011 Census, whilst the population data is taken from Hampshire County Council's 2016 Small Area Population Forecast. Therefore, there is some discrepancy in population figures.