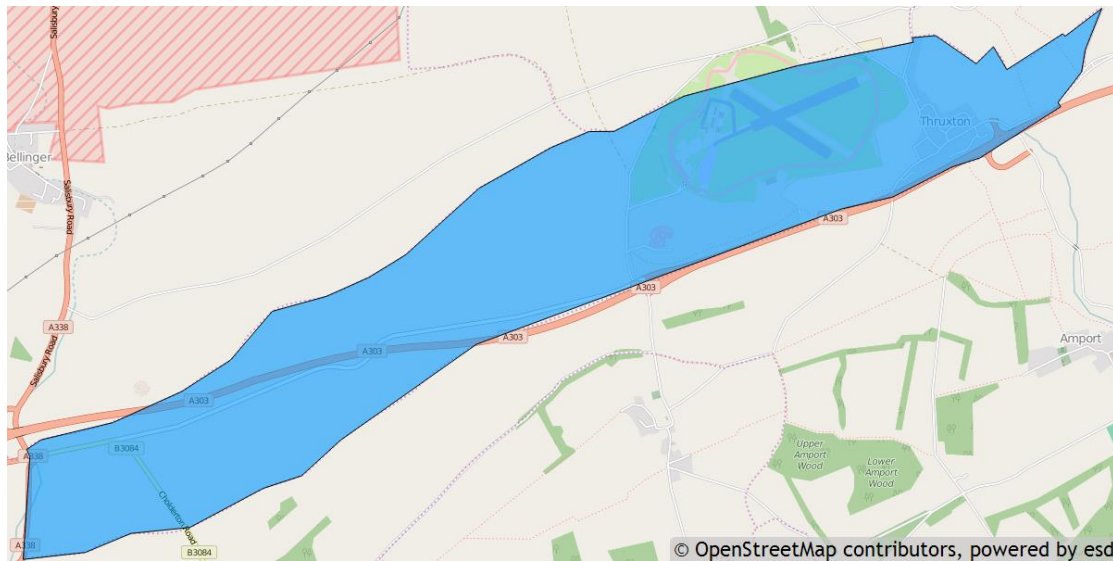


## Thrupton parish profile

This profile provides a summary of the latest available information on the demographic make-up of the Thrupton parish within Test Valley. It looks at the population structure and provides economic, housing and educational information for the parish.

Thrupton is one of the 59 parishes in Test Valley. It has an area of 633 hectares which represents 1.0% of the total area of Test Valley.



### Elected representatives

|   |  |
|---|--|
| <p><b>Hampshire County Councillor</b></p> <p><b>Cllr Zilliah Brooks</b><br/>Home: 01264 335388<br/>Email: <a href="mailto:zilliah.brooks@hants.gov.uk">zilliah.brooks@hants.gov.uk</a></p>      | <p><b>Test Valley Borough Councillors</b></p> <p><b>Cllr Phil Lashbrook</b><br/>Home: 01264 773588<br/>Mobile: 07766 708060<br/>Email: <a href="mailto:cllrplashbrook@testvalley.gov.uk">cllrplashbrook@testvalley.gov.uk</a></p> <p><b>Cllr Pam Mutton</b><br/>Home: 01264 396756<br/>Email: <a href="mailto:cllrpmutton@testvalley.gov.uk">cllrpmutton@testvalley.gov.uk</a></p> |
| <p><b>Thrupton Parish Council Chairman</b></p> <p><b>Cllr Charles Milner-Williams</b><br/>Daytime: 01264 773546<br/>Email: <a href="mailto:charlesmw@hotmail.com">charlesmw@hotmail.com</a></p> | <p><b>Thrupton Parish Council Clerk</b></p> <p><b>Ms. Heather Bourner</b><br/>Daytime: 01264 773976<br/>Email: <a href="mailto:heather.bourner@googlemail.com">heather.bourner@googlemail.com</a></p>  |

## Residents

The estimated 2016 population of Thruxton parish is 634. This is expected to fall slightly by 2021 to 631 (a fall of 0.5%).

Thruxton's resident population is 52.4% female and 47.6% male.

**Young people (0-19)** currently make up 16.6% of Thruxton's population; this is expected to rise slightly to 16.8% by 2021.

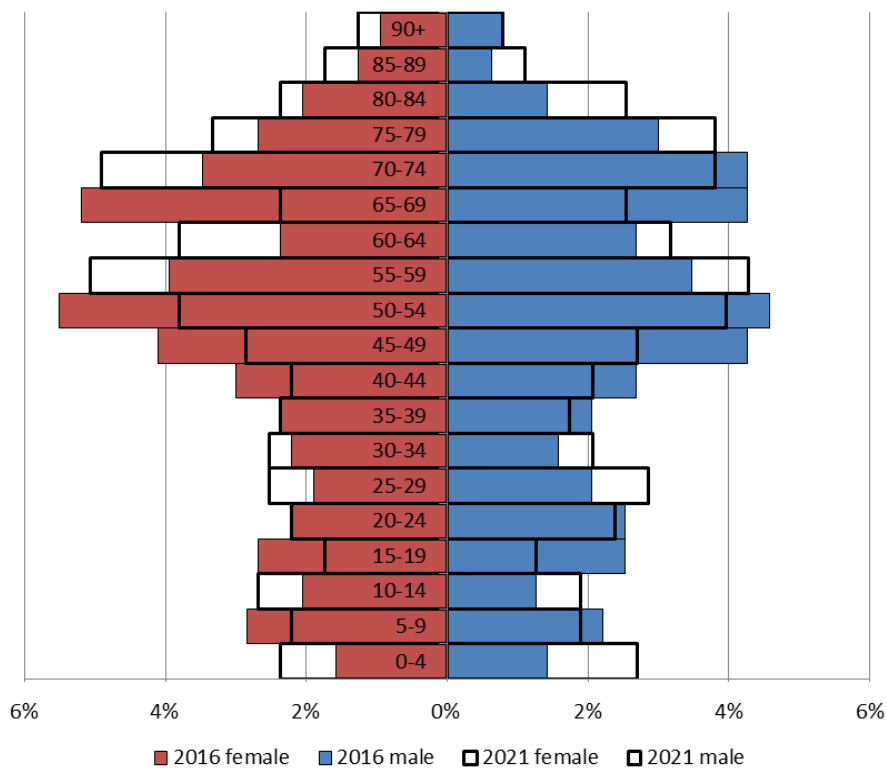
**Young adults (20-39)** currently make up 16.9% of the parish's population; this is expected to rise to 18.7% by 2021.

**Middle aged residents (40-64)** currently account for 36.6% of Thruxton's population; this is expected to fall to 33.9% by 2021.

Those **aged 65 and over** make up 30.0% of the parish's population; this is expected to rise slightly to 30.6% by 2021.

Those **aged 85 and over** currently represent 3.6% of the population; this is expected to rise to 4.9% by 2021.

### Age of parish population



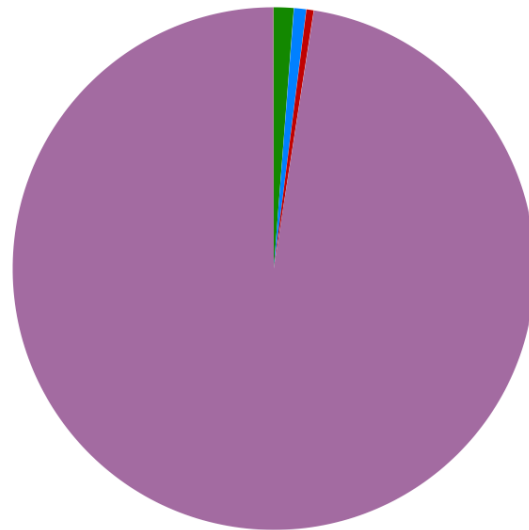
## Ethnicity

The largest ethnic group in Thruxton is “White” at 97.5% of the parish's population.. That compares with a figure of 95.9% for Test Valley as a whole and 95.0% for Hampshire.

The second largest ethnic group (1.2%) is “Asian/Asian British”. That compares with 2.0% for the Test Valley as a whole and 2.7% for Hampshire.

Residents by ethnicity (count)

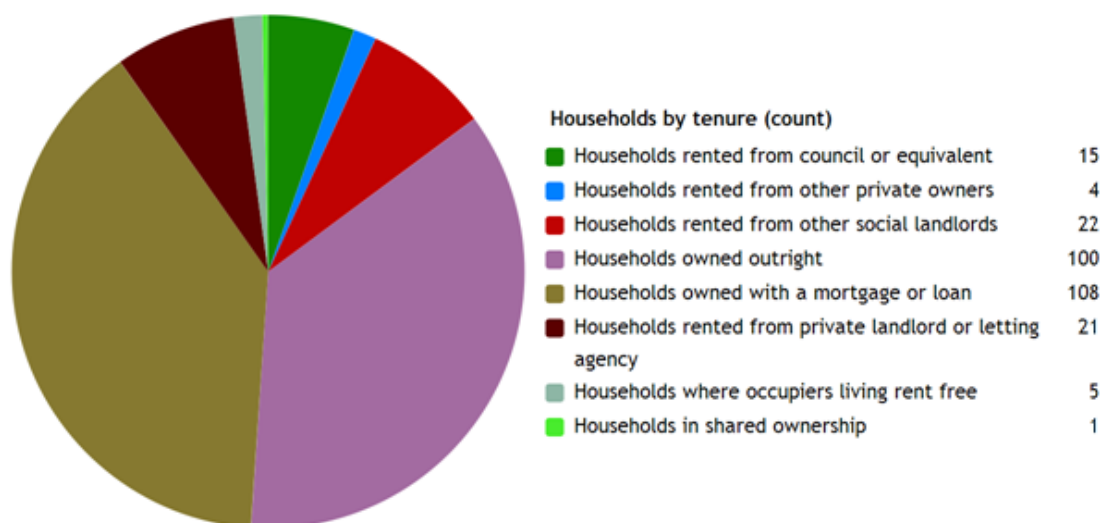
|   |     |
|---|-----|
| Residents who are Asian/Asian British                   | 8   |
| Residents who are Black/African/Caribbean/Black British | 5   |
| Residents who are Mixed/multiple ethnic groups          | 3   |
| Residents who are White                                 | 634 |
| Residents who are Other ethnic group                    | 0   |



Powered by esd

## Households

Thruxton parish has **276 households**, which represent 0.6% of Test Valley's 47,626 households. The household split by tenure is shown below (tenure refers to the financial arrangements under which a home is occupied).

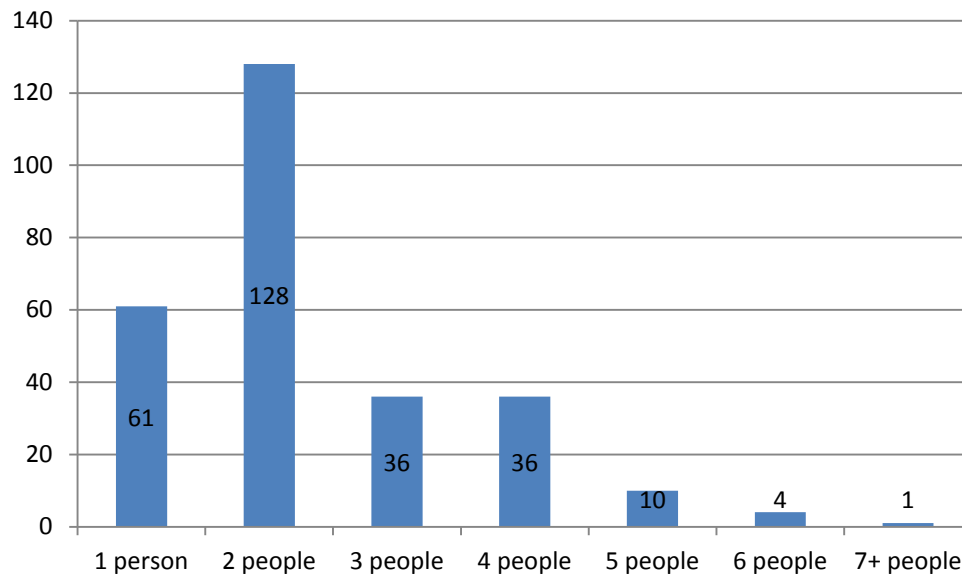


Powered by esd

The majority of properties (75.4%) are **owned by those who live in them**. This is higher than the Test Valley average of 70.4%.

9.1% of Thruxton households are **privately rented**, and 13.4% are **socially rented**. This compares to 12.9% and 14.4% respectively across Test Valley.

### Households by number of residents



46.4% of Thruxton's households are occupied by two people, and 22.1% by one person. 31.5% of the parish's households are occupied by more than two people.

Thruxton has 26 households with **dependent children aged 0 to 4**. That represents 9.42% of the Parish's households.

76 households in the Parish have **dependent children of all ages**. That represents 27.54% of the Parish's households.

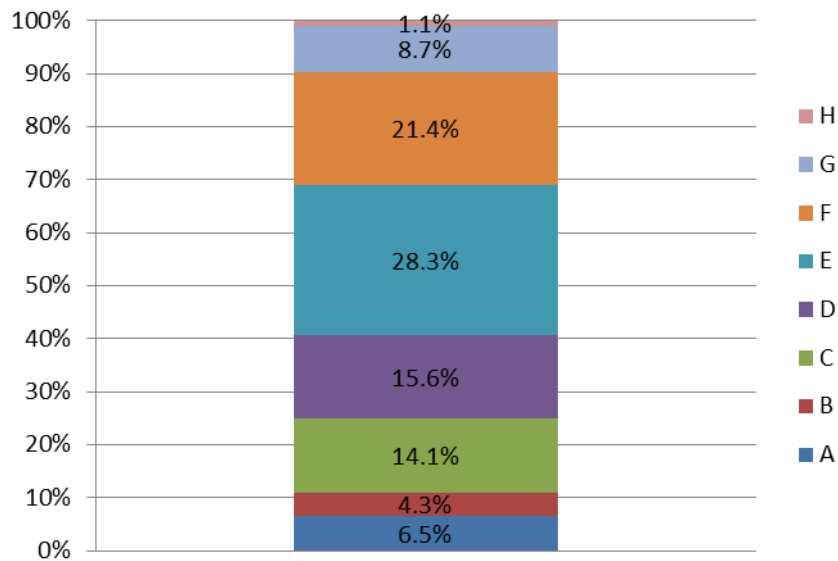
### House prices

According to Zoopla, the average house price in Thruxton (as of March 2016) is **£411,698**. This has increased by 20.4% in the last five years.

It is estimated that **38.2% of households in north rural Test Valley cannot afford to buy a private property**. The north rural area includes the wards of Penton Bellinger, Ampport, Anna, Bourne Valley, Harewood, and Over Wallop.

## Council Tax Bands

### Properties by Council Tax Band



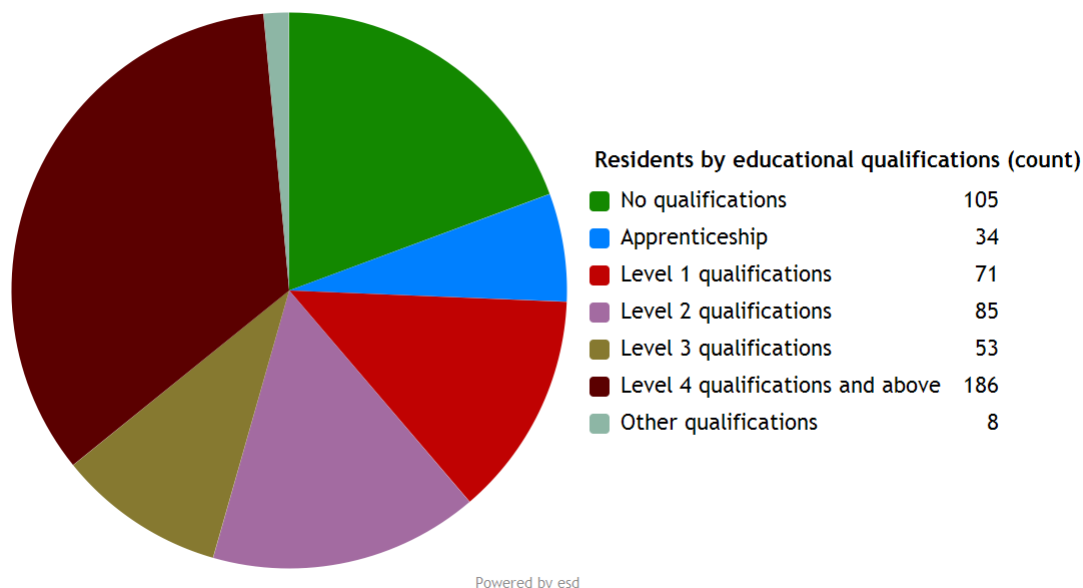
10.8% of Thruxton properties are at the **lower** end of the property market (Bands A and B). This compares to 22.2% for Test Valley as a whole.

58.0% of the parish's properties are in the **middle** range of the property market (Bands C to E). This compares to 60.8% across the whole borough.

31.2% of Thruxton's properties are at the **higher** end of the property market (Bands F to H). This compares to 17.1% of all Test Valley properties.

## Education

28.6% of Thruxton's residents have achieved **level 4 qualifications** and above compared to 30.5% in Test Valley as a whole. 16.2% of Thruxton's residents have **no qualifications** compared, to 18.4% in Test Valley.



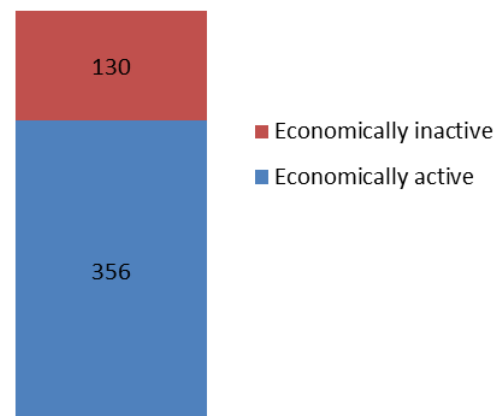
|                     |   |
|---------------------|---|
| No qualifications   | No academic or professional qualifications.   |
| Level 1             | 1+O level passes, 1+CSE/GCSE any grades, NVQ level 1, Basic/Essential skills, NVQ Level 1.  |
| Level 2             | 5+O level passes, 5+GCSEs (grades A*-C), 1 A level, 2-3 AS levels, City and Guilds Craft, NVQ level 2.                                    |
| Level 3             | 2+A levels, Higher School certificate, NVQ level 3, City and Guilds Advanced Craft, BTEC National.  |
| Level 4/5           | Degree (e.g. BA, BSc) higher degree (e.g. MA, PhD, PGCE), NVQ levels 4 and 5, qualified teacher, nurse or accountant status, BTEC Higher. |
| Other qualification | Level unknown, vocational/work-related qualifications, foreign qualifications.  |

## Employment

73.3% of Thruxton residents aged 16-74 are **economically active**, compared to 73.4% of Test Valley residents. This includes people in full-, part- and self-employment, those who are actively seeking a job, and full-time students.

The remaining 26.7% of residents aged 16-74 are **economically inactive**, compared to 26.6% of Test Valley residents. This includes people who are retired, long-term sick or disabled, or who look after the home and family.

## Economic activity (count)

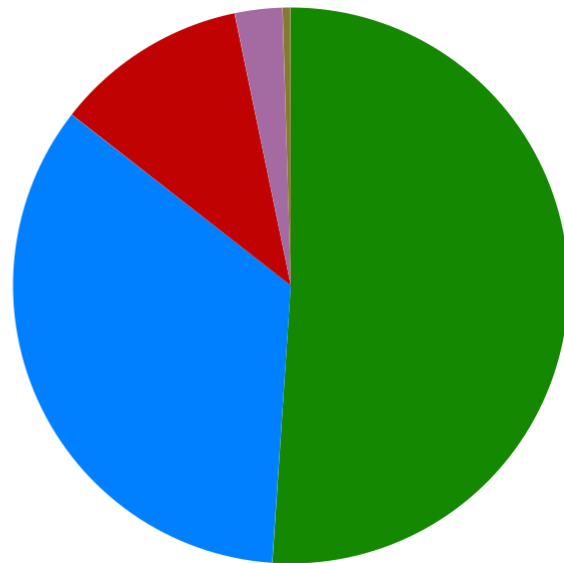


## Health

Thruxton has 18 (2.8%) residents that report being in **bad health** and 3 (0.5%) residents that report being in **very bad health**.

### Residents by level of health (count)

|                  |     |
|------------------|-----|
| Very good health | 332 |
| Good health      | 224 |
| Fair health      | 73  |
| Bad health       | 18  |
| Very bad health  | 3   |



Powered by esd

## Community plans

Thruxton has a **Village Design Statement**, which was adopted by Test Valley Borough Council in 2006 as Supplementary Planning Guidance. The advisory document aims to describe the distinctive character and history of the village and the surrounding countryside. It explains the landscape setting of the village, the shape of the settlement and the nature of the buildings, and can be found online: <http://www.testvalley.gov.uk/resident/communityandleisure/workingwithcommunities/mylocalarea/pton-bellinger/thruxtonvds/>

Details of any community planning exercises your parish is undertaking can be added here. Please get in touch with the Policy Team at the email address below and we will be more than happy to add information at your request.

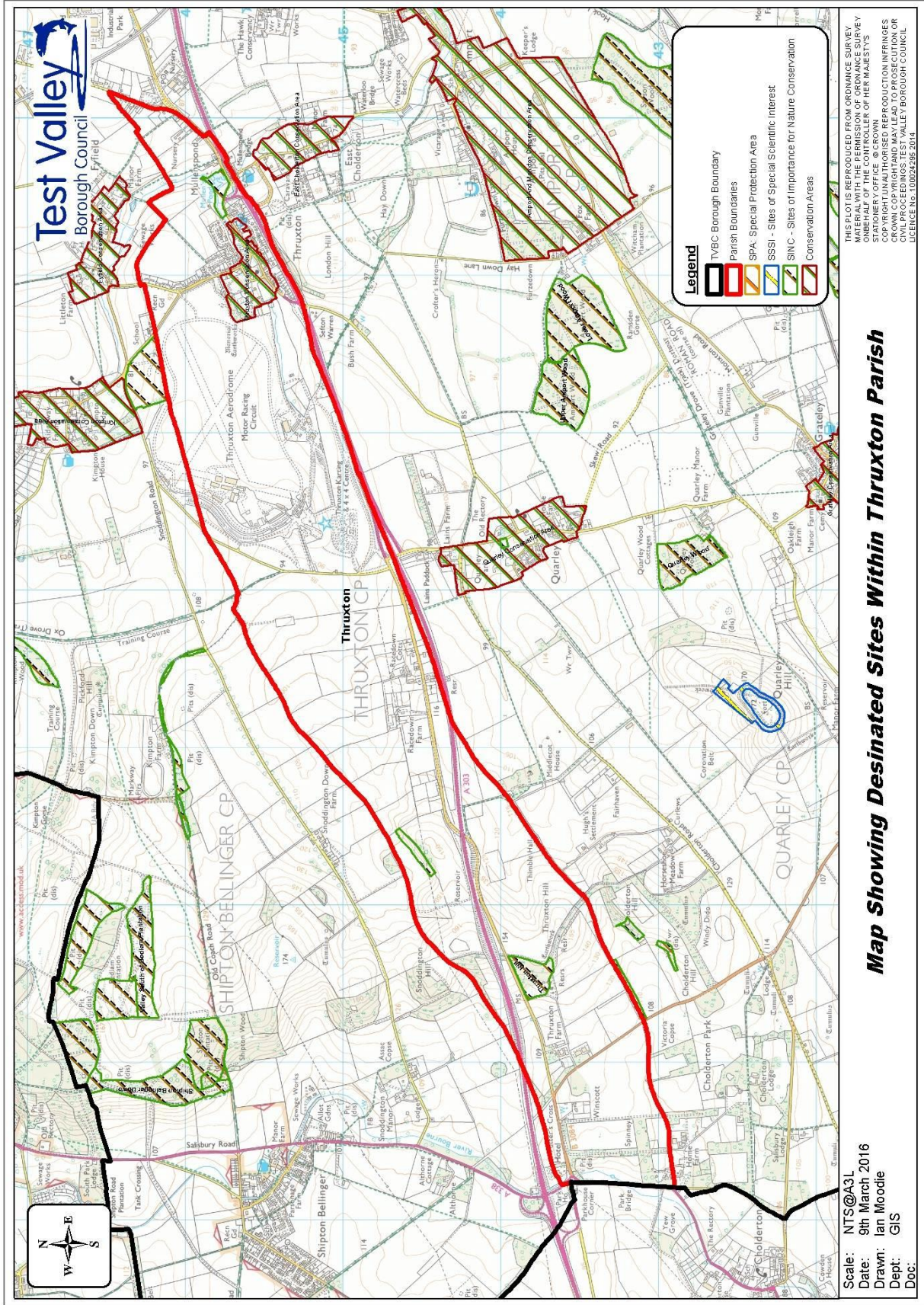
## Local facilities

|                                |                                 |
|--------------------------------|---------------------------------|
| <b>Food stores</b>             | None                            |
| <b>Other shops</b>             | None                            |
| <b>Primary school</b>          | Kimpton Primary School          |
| <b>Secondary school</b>        | None                            |
| <b>Health facilities</b>       | None                            |
| <b>Leisure facilities</b>      | Thruxton Recreation Ground      |
| <b>Public houses</b>           | The George Inn                  |
| <b>Community facilities</b>    | Thruxton Memorial Hall          |
| <b>Churches</b>                | St Peter's and St Paul's Church |
| <b>Other facilities</b>        | Thruxton Race Circuit           |
| <b>Local recycling centres</b> | The George Inn                  |



## Public and community transport

|  |  |
|--|--|
| <p><b>Stagecoach 5</b></p> <p>This bus service runs between Thruxton and Andover.</p> <p>More information can be found online at <a href="http://www.travelinesw.com/swe/XSLT_T RIP_REQUEST2">http://www.travelinesw.com/swe/XSLT_T RIP_REQUEST2</a></p>   | <p><b>Dial-a-Ride</b></p> <p>Dial-a-Ride provides weekly door-to-door transport. The service is available to anyone who has no access to, or experiences difficulty with using public bus services. The service takes residents into Andover or Romsey to access local amenities.</p> <p>More information can be found online at: <a href="http://www.tvcs.org.uk/dial-a-ride/">http://www.tvcs.org.uk/dial-a-ride/</a></p>  |
| <p><b>Wheels to Work</b></p> <p>Wheels to Work is a moped loan scheme and is designed for people who do not have access to public or private transport to get them to a job, vocational training or to attend interviews. A moped can be loaned for 3 to 12 months depending on circumstances. The scheme is aimed at people between the ages of 16-25.</p> <p>More information on the scheme can be found at: <a href="http://www3.hants.gov.uk/passengertransport/communitytransport/wheels-to-work.htm">http://www3.hants.gov.uk/passengertransport/communitytransport/wheels-to-work.htm</a></p> | <p><b>Andover Neighbourcare</b></p> <p>A voluntary car scheme for the purpose of GP, Dental, Optician and Hospital appointments.</p> <p>For more information telephone 01794 388884 or email <a href="mailto:dgp100@btinternet.com">dgp100@btinternet.com</a></p> <p>More information can be found online at: <a href="http://www3.hants.gov.uk/community-transport/community-transport-detail?var_org_code=179&amp;var_typecode=33&amp;var_district">http://www3.hants.gov.uk/community-transport/community-transport-detail?var_org_code=179&amp;var_typecode=33&amp;var_district</a></p> <p>Further community transport information for Test Valley can be found on Hampshire County Council's website: <a href="http://www3.hants.gov.uk/passengertransport/communitytransport/community-transport.htm">http://www3.hants.gov.uk/passengertransport/communitytransport/community-transport.htm</a></p> |



## **Additional information**

The information in this profile has been prepared by Test Valley Borough Council's Policy Team in Partnership with the Local Government Association. If you would like further information about a specific area or data set, please contact the Policy Team on 01264 368000 or [policyteam@testvalley.gov.uk](mailto:policyteam@testvalley.gov.uk), and we will be happy to work with you to provide a more detailed profile.

This profile contains key information for you to use to contribute to the development of a Neighbourhood Plan or other community project. If you know of any additional information about the parish that may be of use (for example, information on local facilities) please get in touch and we will endeavor to work with you to add to or change the profile.

Please note that most of the data featured in this profile is taken from the 2011 Census, whilst the population data is taken from Hampshire County Council's 2016 Small Area Population Forecast. Therefore, there is some discrepancy in population figures.