



A - Uni-mini 'Kalbo Castle' (HAGS8055773)



C - set of 4 Stepping Logs (PD3000-25)



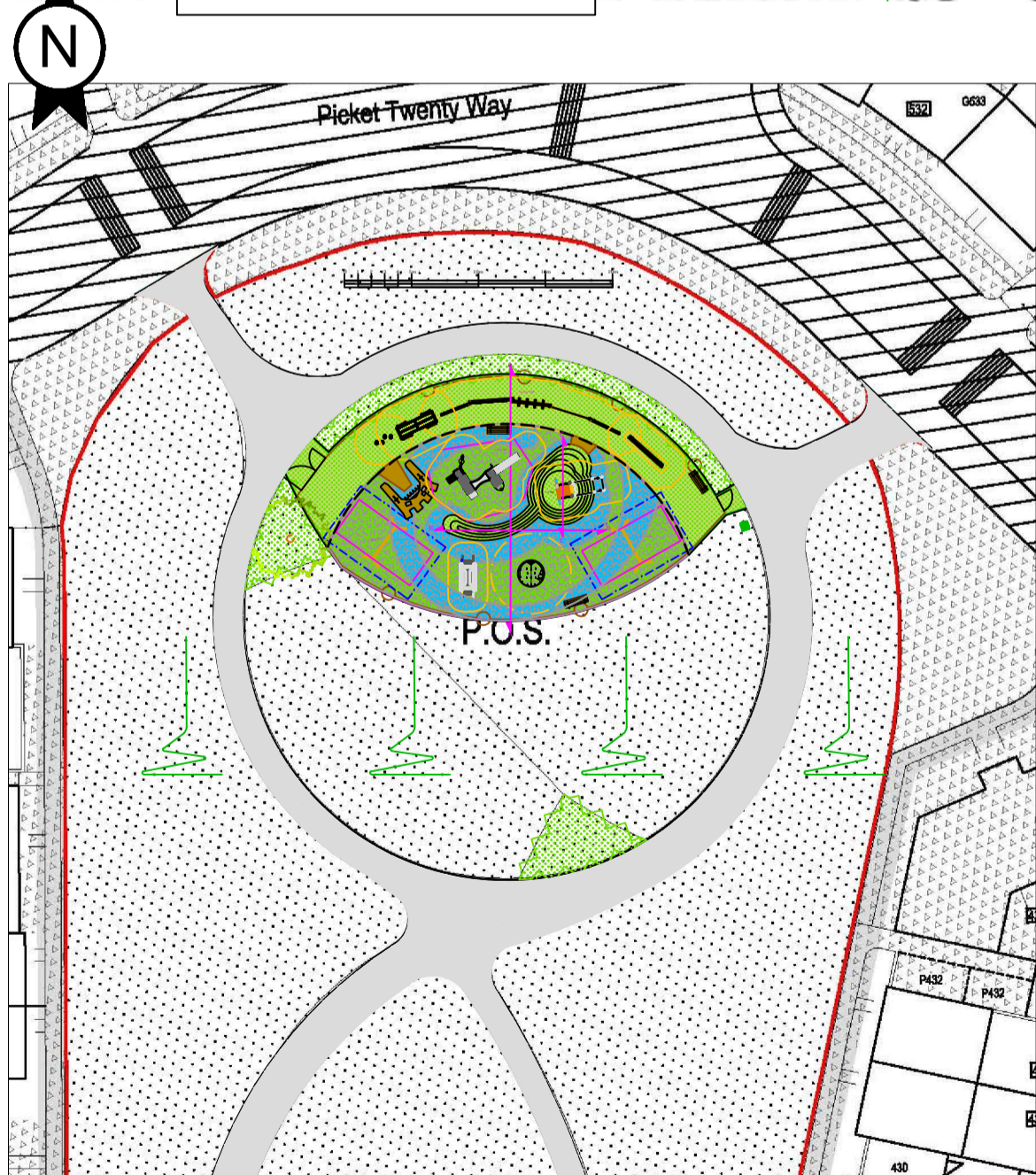
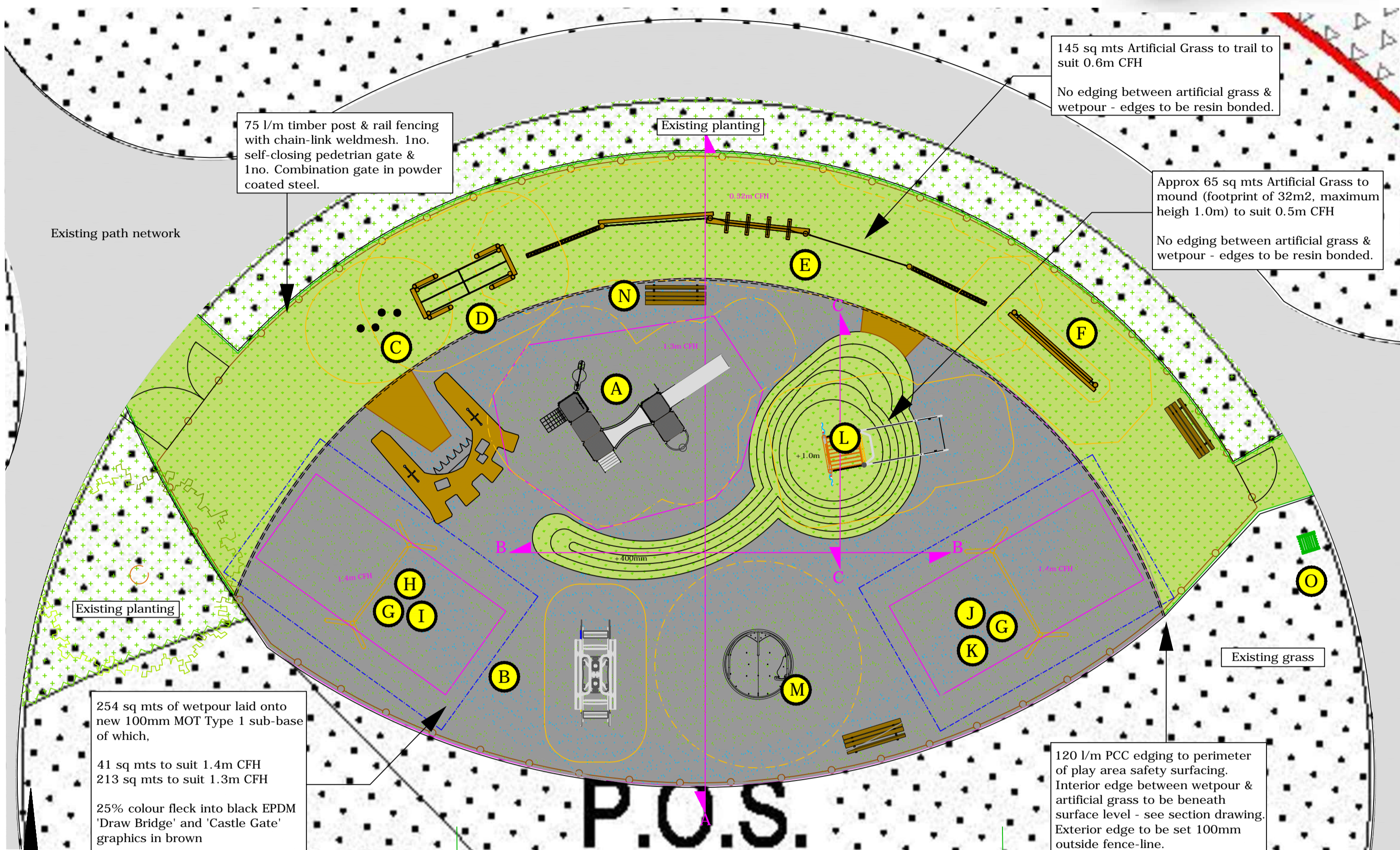
D - Burma Bridge (PD3000-08)

E - Timber Trail no.8 (PD-3000-47)

B - 'Baronessa' see-s: (HAG8056655)



F - Rolling Log with Drop Ropes (PD3000-16)



G - 2no. 2.4m high 'Goro' swing frame (HAG8000796)



L - 'Castle style wide Embankment Slide (SP6041)



M - 'Spinmee' flush to ground wheelchair roundabout (CAR-SPI)



H - 'Kiddy' cradle seat (HAG8001001)



I - 'Tango' dual generation seat (HAG8053217)



J - 'Katja' flat seat (HAG8001000)



K - 'Mirage' inclusive seat (88020801)



O - 1no. Streetmaster Cardiff Litter Bin



N - 3no. 'Ekeby' seats with back rests

CUSTOMER
Test Valley Borough Council

PROJECT
Picket Twenty Way
P.O.S. site 1b

TITLE
Layout proposal

HAGS SMP

Inspiring all generations



Southern Office
Clockhouse Lane East
Egham, Surrey
TW20 8PG
United Kingdom

Telephone
+44 (0) 1784 489100
email: sales@hags-smp.co.uk
Website: www.hags-smp.co.uk

HAGS-SMP RECOMMEND THE PROVISION OF AN APPROPRIATE SURFACE BENEATH ALL PLAY EQUIPMENT



DATE 14.11.16 SCALE 1:100 & 1:500 @ A2
DRAWN BY: L.T. CHECKED BY: --

DRAWING NUMBER Q-14724-W9C9-C REVISION 1.4

© HAGS-SMP 2016

SHEET 1 OF 3

KEY

- Fallingspace Zone (EN1176)
- Minimum Space (EN1176)
- Change in Critical Fall Height
- Timber post & rail fencing
- Artificial grass safety surfacing
- Wetpour safety surfacing (black with colour fleck)

NOTES

24.08.16 - Original by D.C. Revision 0

- Draft design for public consultation

10.10.16 - Amendment by L.T. Revision 1

- Play area layout completely redesigned (for discussion)

25.10.16 - Amendment by L.T. Revision 1.1

- Layout of equipment and boundary slightly adjusted
- Furniture added

27.10.16 - Amendment by L.T. Revision 1.2

- Furniture positions adjusted, 1 seat deleted

28.10.16 - Amendment by L.T. Revision 1.3

- Furniture positions adjusted, 1 seat added back in

14.11.16 - Amendment by L.T. Revision 1.4

- Cradle seat swing position adjusted

REVISIONS

24.08.16 - Original by D.C. Revision 0

- Draft design for public consultation

10.10.16 - Amendment by L.T. Revision 1

- Play area layout completely redesigned (for discussion)

25.10.16 - Amendment by L.T. Revision 1.1

- Layout of equipment and boundary slightly adjusted
- Furniture added

27.10.16 - Amendment by L.T. Revision 1.2

- Furniture positions adjusted, 1 seat deleted

28.10.16 - Amendment by L.T. Revision 1.3

- Furniture positions adjusted, 1 seat added back in

14.11.16 - Amendment by L.T. Revision 1.4

- Cradle seat swing position adjusted