

31. Little Bee Bakery
www.littlebeebakery.co.uk
cakes@littlebeebakery.co.uk
 01794 329263
 Unit 24 Basepoint Business Centre, Abbey Park Industrial Estate, Romsey, SO51 9AQ.
 Open for collection of orders only.
 Little Bee Bakery make celebration cakes, cupcakes, whoopee pies, iced biscuits and more, with a growing range of gluten free, dairy free and vegan cakes and cupcakes.

32. Packridge Self-Catering Apartments and Bed and Breakfast
www.packridgeestate.com
info@packridgeestate.com
 02380 733073
 Packridge Farm, Packridge Lane, Romsey, SO51 9LL
 Visits by appointment only. Open all year round including Christmas and New Year. Licensed with local beer, cider, wine and even Twisted Nose gin! Outdoor swimming pool for summer use and hot tub all year round. Footpaths from the farm to Chilworth, Romsey and the Test Valley. Dog friendly with daily pet care service.

Test Valley producers with stock available to buy from their websites, but not open to the public.

Hildon
www.hildon.com
enquiries@hildon.com
 01794 301747
 Hildon represents the finest English Natural Mineral Water. Drawn from a pure and untouched source, in the picturesque Test Valley, this iconic brand has a guaranteed provenance and unique flavour, enriched with essential minerals imparted from the chalk downs. As a Natural Mineral Water the taste, quality and purity are assured.

Somborne Valley Vineyard
sales@sombornevalley.com
 01794 388 547
 Wholesale orders only. Somborne Valley Vineyard is a family-run business with 26 acres of vines, situated close to the meandering River Test. Producers of fine English still and sparkling wines which have won a number of Wessex Vineyards Association and UK Vineyards Association awards.

Betteridges Brewery
info@betteridgesbrewery.co.uk
www.betteridgesbrewery.co.uk
 07771966058
 Aiming to give an insight into the process of brewing in Betteridge's Brewery in Hurstbourne Tarrant, to offer information on their beers, how and where to buy them, and to encourage responsible drinking of truly southern style English beer, and the sheer pleasure of it whether with food or on its own.

Nutritional Organic
www.nutritionalorganic.com
food@nutritionalorganic.com
 01264 848596
 Station Road, Chilbolton, SO20 6AW
 Online only 24hrs/day. Nuttie Organics provide Organic only Food Boxes and Recipe Boxes designed just for you.

Test Valley Gin
www.theginstall.co.uk
 I handcraft herb infused gin using locally sourced ingredients in small batches. Currently I make three gins; Test Valley Gin, Spire Gin and Summer Solstice Gin.

Chalkdown Cider
www.chalkdowncider.com
info@chalkdowncider.com
 01962 217760
 Chalkdown is a premium sparkling cider crafted in Andover Down from Hampshire apples. Its delicate flavours are complemented by a biscuity character and elegant balance to make a refreshing drink that's perfect as an aperitif or as an alternative to Champagne or Prosecco. Awarded the prestigious International Cider Challenge Trophy for best naturally-sparkling cider in 2017 and 2018. Buy online or from Leckford Farm Shop, Wine Utopia and Rosebourne.

Fjordling Smokehouses Ltd
www.fjordling.co.uk
 01794 521845
 Old Salisbury Lane, Romsey, SO51 0GD
 (Trade delivery)

Danebury Vineyards
www.danebury.com
 01264 781851
 Fine English wine since 1988. Danebury Vineyards produce award-winning English sparkling and still wines from vines grown on the chalk and flint soil of Hampshire.

Cyril's Soap Shed
info@cyrilssopshed.co.uk
www.cyrilssopshed.co.uk
 01794 322369
 Handmade, Natural Goats Milk Soap, using the milk from their own small herd of goats. With only pure Essential Oils, herbs and root powders for fragrance, colour and texture.

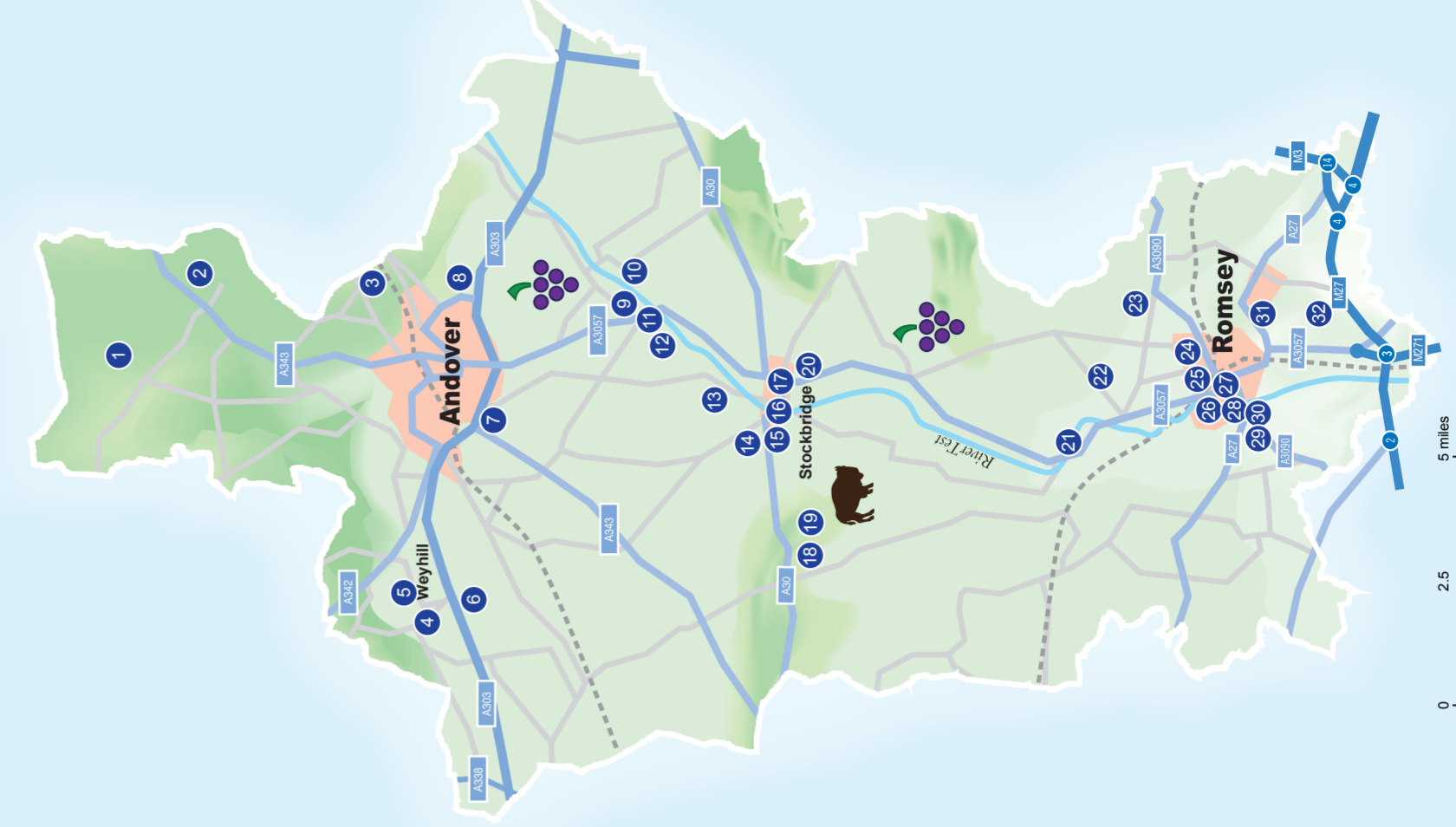
Chalk Stream Foods
sales@chalkstreamfoods.co.uk
www.chalkstreamfoods.co.uk
 01794 330000
 Chalk Stream Foods source, prepare and deliver the finest, freshest rainbow trout from farms on the River Itchen and the River Test directly to restaurants across the UK. These crystal waters, constant water flows, excellent light, and vegetation create havens for the fish, making them rich and lean with a distinctive, sensational taste. Chefs and restaurant owners need look no further for a local and reliable supplier.

Stag and Bull Biltong
www.stagandbull.com
bellow@stagandbull.com
 07799 137787
 Chilbolton, Stockbridge
 Online sales 24 / 7 / 365. Ready for a 'rut'... and Adventure? Stag and Bull Biltong are leading the CHARGE against mediocre meat munchies. Award Winning, Biltong from local beef and venison. Hand-crafted in the Test Valley.

Penton Park Brewery
www.facebook.com/PentonParkBrewery
 Welcome from the Penton Park Brewery. This craft beer microbrewery has a 'Penton Porter', two Pales - 'Colonel Bob' and 'The Duke' - and a Ruby ale called '50, Not Out'. Guy Rolfe (Owner and Brewer) - with some understanding friends Addam, Stu and, Kev - has turned this once Victorian kitchen into the beating heart of the Penton Park Estate once again.

Turner Hardy & Co
www.turnerhardy.com
hello@turnerhardy.com
 01794 335320
 Turner Hardy and Co make the most delicious pure and spiced tomato juices to drink on their own or to make unbelievably great Bloody Marys. The juices are made from Isle of Wight tomatoes. This is local, artisan, sustainable, low in salt and gluten free... based in Awbridge and bottled just for you!

Peaberry Coffee
www.peaberrycoffee.co.uk
 07838 111034
 The Roastery, Unit 60, Basepoint Business Centre, Caxton Close, Andover, SP10 3FG
 At Peaberry Coffee we know and love coffee and are committed to an ethical approach. We import high quality beans from around the world, building direct relationships with farmers, while we blend and roast right here in Andover.



Where to visit, buy and enjoy local produce in Test Valley:

- 1 Parsonage Farm
- 2 The George and Dragon
- 3 Bourne Valley Inn
- 4 Rosebourne Garden Centre
- 5 The Weyhill Farm Shop
- 6 The Hawk Inn
- 7 Greenfield Pork Products
- 8 Becky's Beezies
- 9 Cottonworth Wine
- 10 Chilbolton Stores & Post Office
- 11 The Mayfly
- 12 Longstock Park Farm Shop & Nursery
- 13 The Peat Spade Inn
- 14 The Greyhound on the Test
- 15 Woodfire Pizza Mezza
- 16 Thyme & Tides
- 17 The Southern Co-operative Store Stockbridge
- 18 Test Brewing Ltd
- 19 Broughton Water Buffalo
- 20 The White Hart
- 21 The Bear and Ragged Staff
- 22 The Braishfield Pantry
- 23 Sir Harold Hillier Gardens
- 24 The Southern Co-operative Store Romsey
- 25 Flack Manor Brewery
- 26 Dish Deli & Kitchen
- 27 The White Horse Hotel & Brasserie
- 28 Sundae's Child
- 29 The Cromwell Arms
- 30 The Three Tuns Romsey
- 31 Little Bee Bakery
- 32 Packridge Farm Self-Catering Apartments

Further information on these producers can be found overleaf.

This leaflet has been produced by Test Valley Borough Council in collaboration with Hampshire Fare.

Test Valley Borough Council

Test Valley Borough Council is pleased to support its local producers, both to promote small businesses and because they contribute to the character and attractiveness of Test Valley as a place for residents and visitors to enjoy.

Please visit our website for further information and literature designed to describe the lovely character and culture of Test Valley:
www.testvalley.gov.uk/tourism

Hampshire Fare

Hampshire Fare represents and promotes local producers of food, drink and craft based in Hampshire. Hampshire Fare organises the Hampshire Food Festival which is a month-long celebration of local food and farming.



Sign up for our e-newsletter on our website to keep up-to-date with local foodie news, events and competitions.
www.hampshirefare.co.uk / 02380 735830

Annual food events in Test Valley

- Hampshire Food Festival (July) www.hampshirefare.co.uk
- Trout 'n' About (August) www.tnastockbridge.co.uk
- Romsey Food Festival (September) www.romseyfoodfest.com
- Romsey Show (September) www.romseyshow.co.uk

You can also purchase local food and drink direct from the producers at Hampshire Farmers' Markets, which take place in Romsey and at the Andover Artisan Market. For further information visit:
www.hampshirefarmersmarkets.co.uk

A Taste of Test Valley

A guide to local food, drink and craft producers



Get any of these guides on your tablet or mobile

If you would like to download a copy of any of these guides to use on your mobile or tablet, you can find them at: www.testvalley.gov.uk/tourism

- Test Valley Vineyards
- Literary Test Valley
- Stockbridge Pocket Guide
- Sprat and Winkle
- Andover Heritage Trail
- Get out and walk
- Parish Churches of Test Valley

A Taste of Test Valley: where to visit, buy and enjoy local produce



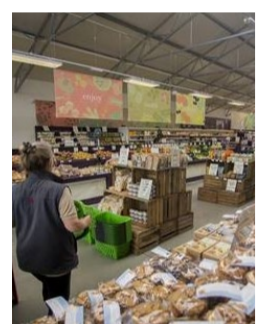
1. Parsonage Farm
www.parsonage-farm.co.uk
sarah@parsonage-farm.co.uk
 01264 736208
Upton, Andover, SP11 0JP
 By arrangement, call or email first to check someone is in! Parsonage Farm produces award winning salami from free range outdoor reared pigs raised on site. All the salami are carefully made by hand, using local beer and gin, seasonings, and naturally air dried. Salami are available to buy from the website, local shops and on the menu in selected pubs.



2. The George and Dragon
info@georgeanddragon.com
www.georgeanddragon.com
 01264 736277
The Square, Hurstbourne Tarrant, Andover SP11 0AA
 Opening times: Mon to Sat 8am to 11pm, Sun 11am to 10pm. The George and Dragon has been a coaching inn since the 16th century and, after a comprehensive restoration which took over a year, this wonderful old building has once again opened its doors.



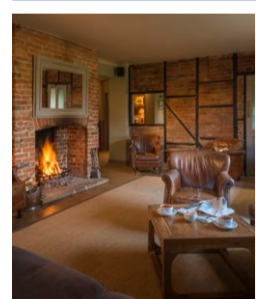
3. Bourne Valley Inn
enquiries@bournevalleyinn.com
www.bournevalleyinn.com
 01264 738361
St Mary Bourne, Andover SP11 6BT
 Open daily from 9.00am-11.00pm. Tucked away in the small village of St Mary Bourne, in the heart of the Hampshire countryside, is the Bourne Valley Inn, a beautifully refurbished country inn offering traditional British food, cosy cottage style bedrooms and a large selection of real ales, wine and spirits.



4. Rosebourne Garden Centre
www.rosebourne.co.uk
info@rosebourne.co.uk
 01264 771714
Amesbury Road, Weyhill, Andover, Hampshire SP11 8ED
 Opening days/times: Monday-Saturday 8.30am-5.30pm, Sunday 10.30am-4.30pm (Restaurant opens at 9.00am Sundays). Rosebourne is passionate about showcasing quality, fresh and locally sourced produce within their table service restaurant and food hall.



5. The Weyhill Farm Shop
www.theweyhillfarmshop.co.uk
admin@theweyhillfarmshop.co.uk
 01264 773300
Weyhill Road, Weyhill, Andover, SP11 0PP
 Opening days/times: Tuesday to Friday 9am to 6pm. Saturday 9am to 5pm. Award winning farm shop offering goods including meat, cakes, jams and chutneys from over 40 local suppliers. The Weyhill Farm Shop is passionate about showcasing and supporting the fantastic produce that the area has to offer to the local community.



6. The Hawk Inn
www.hawkinnamport.co.uk
info@hawkinnamport.co.uk
 01264 710371
The Hawk Inn, Sarson Lane, Ampport, Andover, SP11 8AE
 Opening days/times: Monday to Friday 7.30am-11pm / Saturday 8.30am-11pm / Sunday 8.30am-10.30pm. A great place for a fabulous dinner or a refreshing drink on the sandstone terrace with its stunning views over Pill Hill Brook.



7. Greenfield Pork Products
www.greenfield-pork.co.uk
enquiries@greenfield-pork.co.uk
 01264 359422
Foundry Road, Anna Valley, SP11 7LX
 Open Monday-Saturday 9am-5pm. Greenfields is a small family-run business supplying quality free-range, award winning pork, bacon and sausages throughout Hampshire, produced from its own herd of specialist pigs. Visit the farm shop, find them at Farmers' Markets, order online, contact them for hog roasts.



8. Becky's Beezzz
beckysbeezzz@gmail.com
www.beckysbeesonlineshop.co.uk
 01264 351104
Fourways, Picket Twenty, Andover, SP11 6LF
 Visits by appointment only. Becky's Beezzz are honey bee farmers based in Andover and have more than 100 honey bee colonies sited in apiaries across Berkshire and Hampshire. Selling honey, honey bee products as well as live bees and the associated equipment and supplies.



9. Cottonworth Wine
www.cottonworth.co.uk
hughliddell@cottonworth.co.uk
 01264 860531
Cottonworth House, Andover, SP11 7JX
 Visits by appointment only. Cottonworth is a family run sparkling wine producer based in Test Valley. Please visit by appointment for a tour and a tasting.



10. Chilbolton Stores & Post Office
www.chilboltonvillagestores.co.uk
shop@chilboltonstores.co.uk
 01264 860231
Chilbolton Stores & Post Office, Village Street, Chilbolton, SO20 6BE
 Open 6 days a week. Where local food tastes better. Stocking the best in local produce including Greenfields sausages, Parsonage Farm beef and lamb, Jamie's free range chicken, River Test smoked trout and more.



11. The Mayfly
www.mayflyfullerton.co.uk
 01264 860283
Fullerton Nr. Stockbridge SO20 6AX
 Opening times: Mon to Sun 10am-11pm. Food serving hours: 11.30am-9pm. One of Hampshire's hidden gems, the Mayfly sits on the banks of the world famous trout stream, the River Test. Enjoy delicious home cooked food, and quench your thirst with some outstanding ales and wines in beautiful countryside surroundings.



12. Longstock Park Farm Shop & Nursery
www.leckfordestate.co.uk
 01264 810270
Longstock Park Farm Shop & Nursery, Leckford Estate, Stockbridge, SO20 6EH
 On the Leckford Estate, home to the Waitrose Farm, you'll find delicious local food and drink in the café, and for sale in the farm shop. Afterwards, you can stroll through the Nursery walled garden and see the stunning herbaceous border and collection of Buddleja when in season.



13. The Peat Spade Inn
www.peatspadeinn.co.uk
info@peatspadeinn.co.uk
 01264 810612
The Peat Spade, Village Street, Longstock, Stockbridge, Hampshire, SO20 6DR
 Opening days/times: Mon-Fri 8am-11pm / Saturday 9am-11pm / Sunday 9am-10.30pm. A great spot to drop in for a drink with friends, enjoy our wonderful food or stay the night in comfort, peace and tranquility.



14. The Greyhound on the Test
www.thegreyhoundonthetest.co.uk
info@thegreyhoundonthetest.co.uk
 01264 810833
Address: 31 High Street Stockbridge, SO20 6EY
 Opening days/times: 7 Days from 9.00am until 11pm. The Greyhound on the Test is an alluring retreat. Immerse yourself in sublime dining, resting and sleeping. All around there are country pursuits including shooting, and fishing on the world's most famous fly-fishing river.



15. Woodfire Pizza Mezza
hello@woodfirestockbridge.co.uk
www.woodfirestockbridge.co.uk
 01264 810248
High Street, Stockbridge SO20 6EX
 At Woodfire the food is inspired by the flavours of the Mediterranean, giving a new twist to social, sharing food. Expect woodfired pizzas, mezze 'small plates', chargrilled burgers and delicious salads. Watch the world go by on our sunny terrace or step inside our light and airy restaurant. Open for breakfast, coffee, lunch and now Thursday, Friday & Saturday nights too.



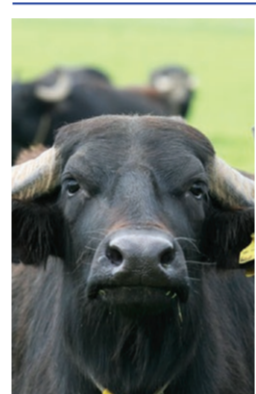
16. Thyme & Tides
www.thymeandtidesdeli.co.uk
sally@thymeandtidesdeli.co.uk
 01264 810101
Thyme & Tides Deli, High Street, Stockbridge, SO20 6HE
 Open Mon to Sat 8.30am-5.00pm, Sun 10am-4pm. Deli, bistro and fishmongers based in Stockbridge. Serving the best teas and coffees as well as offering a delicious menu and specials board focusing on seafood that's delicious and sustainable. Every Friday night is fish and chip night!



17. Southern Co-op Stockbridge
www.thesouthernco-operative.co.uk
 01264 810519
High Street, Stockbridge SO20 6EU
 Opening times: Mon to Sun 7am-11pm. As well as a good choice of groceries, this friendly community food store stocks Hampshire produce in its 'Local Flavours' range. Its Community Support Card scheme raises thousands for local good causes.



18. Test Brewing
www.testbrewing.co.uk
enquiries@testbrewing.co.uk
 01794 301573
The Old Stables, The Greyhound Inn, Broughton, Hampshire, SO20 8AA
 Opening days/times: Brewery normally operational on Wednesdays. In an old stable block behind the Greyhound Pub in Broughton, you'll find the Test Brewing micro-brewery. A bit tatty and rough at the beams, but perfect for brewing real ale. Our aim is to make beer we want to drink and we hope everyone agrees with us. @TestBrewing



19. Broughton Water Buffalo
www.broughtonwaterbuffalo.co.uk
info@water-buffalo.co.uk
 01794 301031
Manor Farm, Broughton, Stockbridge, SO20 8AN
 Opening times: farm shop open Thurs, Fri 9-5pm, Sat 10-1pm. Naturally-reared water buffalo on a fully organic farm. Meat is available in local pubs and restaurants. Hampshire Farmers' Markets and the farm on Friday afternoons. Local chicken, pork and lamb also available. Catering service available for parties, weddings and events.



20. The White Hart
whitehart.stockbridge@fullers.co.uk
www.whitehartstockbridge.co.uk
 01264 810663
High Street, Stockbridge SO20 6HF
 Opening times: Mon to Sat 11am-11pm, Sun 11am-10.30pm. Set in some of Hampshire's most beautiful countryside offering 14 beautifully furnished rooms, The White Hart is on Stockbridge High Street making it an easy reach by car from the M3. With great walking, cycling and fishing nearby, it's the perfect place for outdoor lovers to spend a weekend away with the family.



21. The Bear and Ragged Staff
bearandraggedstaff@fullers.co.uk
www.bear-and-ragged-staff.co.uk
 01794 368602
Stonymarsh, Michelmersh, Romsey, SO51 0LB
 Opening times: Mon to Sat 11.00am-11.00pm, Sun 12.00-10.30pm. The Bear and Ragged Staff aim to bring wholesome home-cooking to the table - using as many fabulous local ingredients as we can, sourcing beautiful fresh produce from local suppliers in Hampshire, Wiltshire and Dorset - from local cheeses and ice cream to New Forest Water.



22. The Braishfield Pantry
www.braishfieldpantry.com
braishfieldpantry@gmail.com
 07506 148700
Braishfield Pantry, Adjoining the Village Hall, Braishfield Road, Braishfield, Romsey, SO51 0PN
 Opening days/times: Mon-Fri 9-12 and 2-5pm, Sat 9-12. The Pantry offers a good range of local produce as well as day to day essentials. The star attraction though is undoubtedly the home-made cakes and freshly brewed coffee to eat in or take away.



23. Sir Harold Hillier Gardens
www.hilliergardens.org.uk
info@hilliergardens.org.uk
 01794 369317 or 01794 369318
Jermyns Lane, Romsey, SO51 0QA
 Opening times: April to Oct 10am-6pm (last entry 5pm), Nov to March 10am-5pm (last entry 4pm). Open all year (except Christmas Day and Boxing Day). These world-recognised Gardens include 13 National Plant Collections and more than 400 champion trees, all set in a stunning variety of landscapes. An outstanding feature is the splendour of the seasonal planting displays set in 180 acres.



24. Southern Co-op, Romsey Central
www.thesouthernco-operative.co.uk
 01794 516064
22 - 24 The Hundred, Romsey SO51 8ZP
 Opening times: Monday to Sunday 7am-10pm. As well as a good choice of groceries, this friendly community food store stocks a variety of Hampshire produce in its Local Flavours range, working with local food and drink producers.



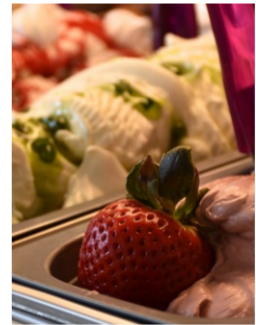
25. Flack Manor Brewery
www.flackmanor.co.uk
info@flackmanor.co.uk
 01794 518520
8, Romsey Industrial Estate, Greatbridge Road, Romsey SO51 0HR
 Opening times: Mon-Fri 9.30am-5pm, Sat 9.30am-12 noon. Get a taste for these quality draught and bottled beers produced from locally sourced floor malted barley and all English hops. Sold in the brewery's shop and local pubs.



26. Dish Deli & Kitchen
www.dishdelikitchen.co.uk
dishdelikitchen@gmail.com
 01794 513663
16 Latimer Street, Romsey, SO51 8DG
 Opening times: Mon 10am-4pm, Tues to Thur 9am-4pm, Fri to Sat 9am-5pm, closed on Sunday. Delicatessen, food store and fully licensed restaurant serving freshly cooked seasonal dishes for breakfast and lunch plus coffee, cake, takeaway, wine, cheeses, charcuterie, olives, infused oils and vinegars, gifts and bespoke hampers.



27. The White Horse Hotel & Brasserie
www.thewhitehorseromsey.co.uk
thewhitehorsesales@silks-hotels.com or thewhitehorse@twhromsey.com
 01794 512431
19 Market Place, Romsey, SO51 8ZJ
 Set in the heart of Romsey, this 16th-century coaching inn with its two AA Rosette Brasserie serves some of the finest food in Hampshire. With 31 unique bedrooms, delightful Silks Bar and frescoed Tudor Lounge, it's also the perfect setting for a drink or afternoon tea.



28. Sundae's Child
www.sundaeschild.com
 01794 279025
4 Market Place, Romsey SO51 8NB
 Opening Hours: Thursday-Sunday 11-5 and Mon-Weds seasonally, please check Facebook for current opening times. This family-run business produces Artisan Ice Creams, Sundaes, Milkshakes & Smoothies. Using only the finest quality natural ingredients, all our frozen delights are made on the premises daily, using traditional methods.



29. The Cromwell Arms
www.cromwellarms@fullers.co.uk
www.thecromwellarms.com
 01794 519515
23 Mainstone, Romsey SO51 8HG
 Opening times to: Mon to Fri 7am-11pm, Sat 8.00am-11pm, Sun 8.00am-10.30pm. A truly special place to drink, dine and stay... at the edge of the picturesque market town of Romsey. The Cromwell Arms boasts delicious breakfast, lunch and dinner served all day; a host of perfectly-stored ales and wines; and a fabulous marquee. With ten unique bedrooms, each blending traditional style with modern convenience, it's the perfect place to rest a while on the South Coast.



30. The Three Tuns Romsey
www.the3tunsromsey.co.uk
manager@the3tunsromsey.co.uk
 01794 512639
58 Middlebridge Street, Romsey, SO51 8HL
 Pub opening hours: Mon to Sat 11am-11pm, Sun 12pm to 10:30pm. Food serving hours: Mon to Thur 12pm-2:30pm, 6pm-9pm, Fri to Sat 12pm-9pm, Sun 12pm-3:30pm, 6pm-9pm. Voted 'Hampshire Life Pub of the Year 2012', this Grade II listed pub is brimming with character and charm. It welcomes you with real ales, cracking wines and award winning, delicious, seasonal food.



Visiting symbols:



Open to the public



By appointment only



Not open to the public