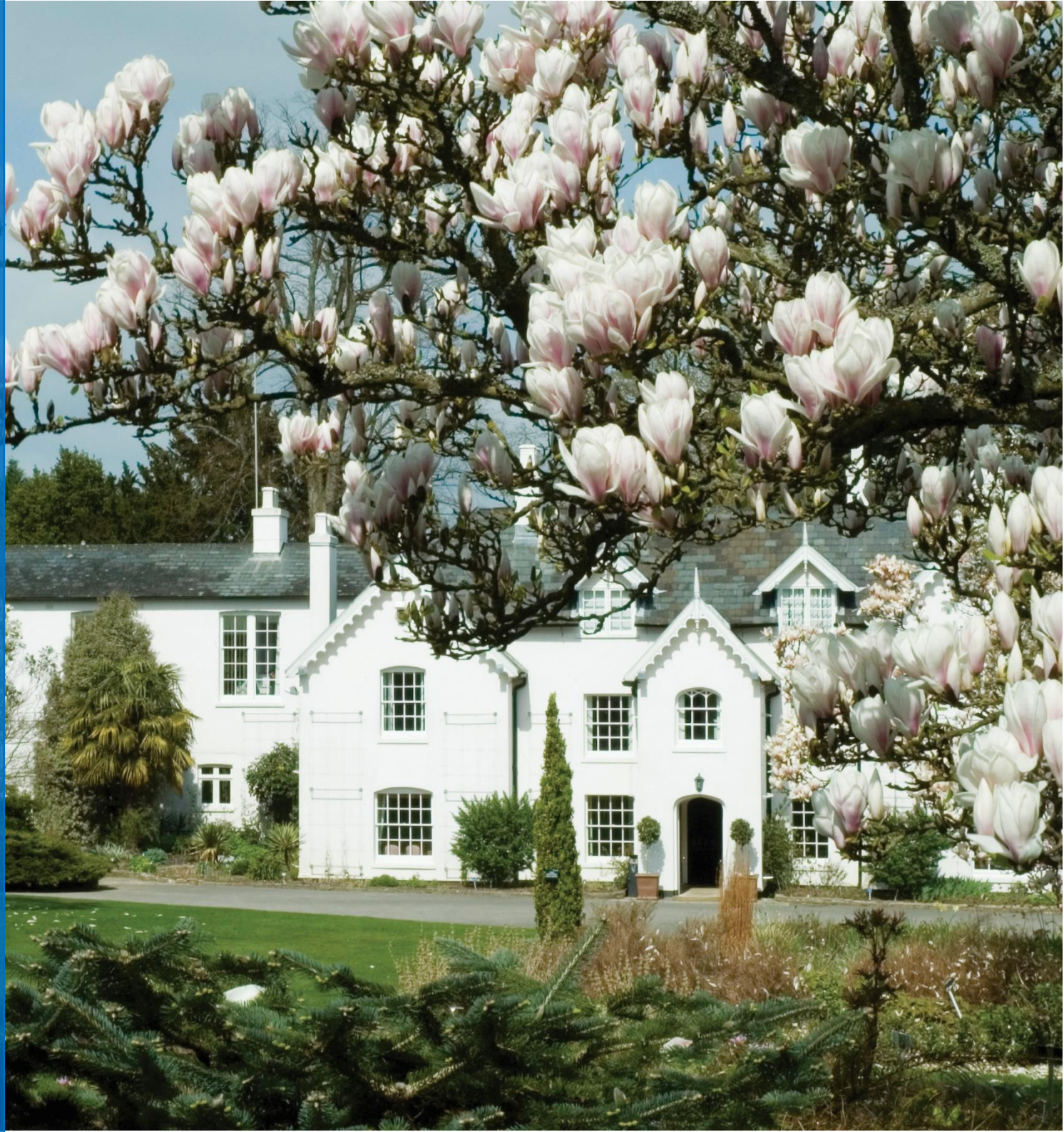


# Ampfield and Braishfield Ward Profile



2023



# Table of contents

- Introduction and elected representatives, page 2

## Population, pages 3-6

- Population changes and age breakdown, page 3
- Ethnicity and religion, page 4
- Health and disability, page 5
- Deprivation, page 6

## Education and employment, pages 7-9

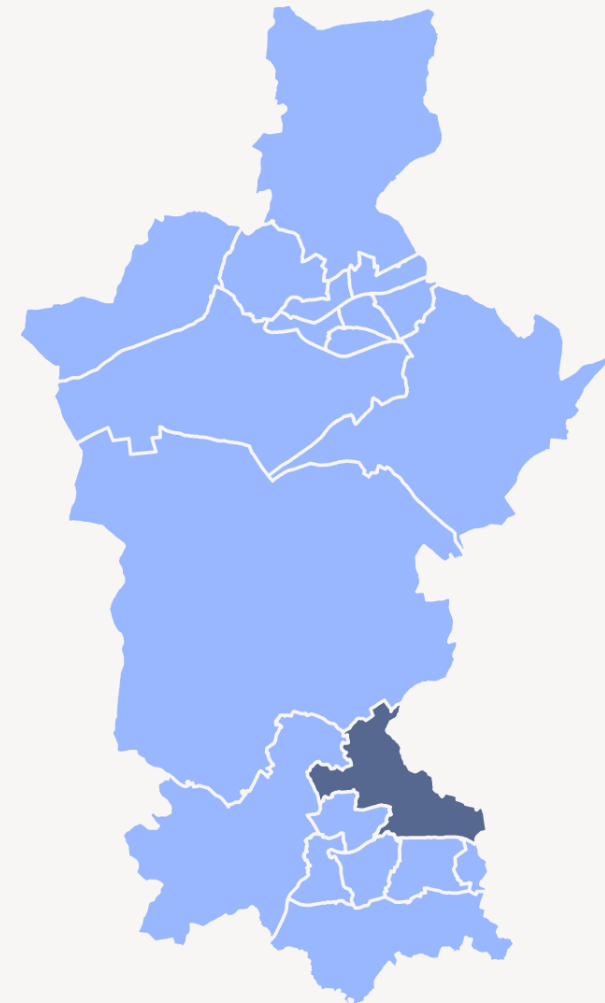
- Qualifications, page 7
- Economic activity, page 8
- Employment by sector, page 9

## Properties, page 10

- Number of properties, type of properties and household tenure, page 10

## Community facilities, page 11

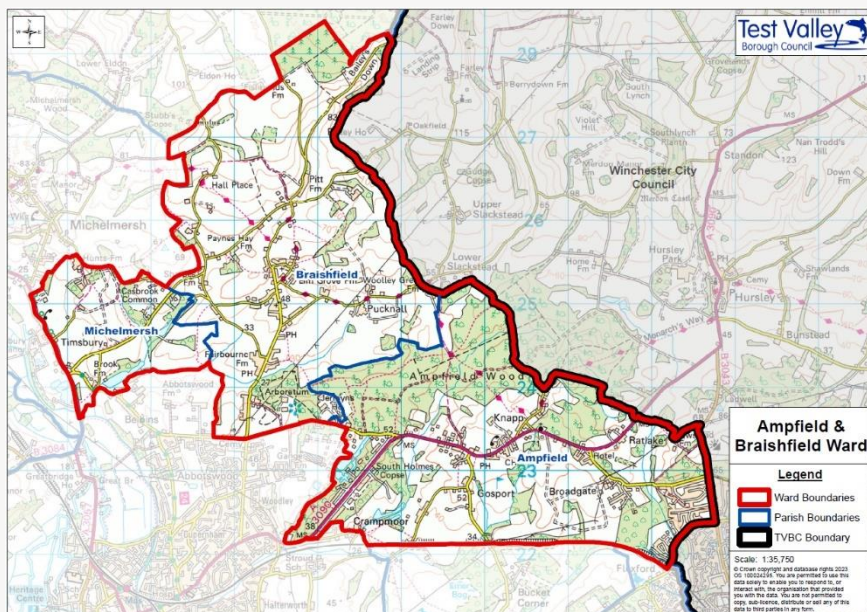
## Further information, page 11



# Ampfield and Braishfield Ward Profile

This profile provides a summary of the latest available information on the demographic make-up of the ward of Ampfield and Braishfield within Test Valley. It looks at information on topics such as the population structure, economic, housing, health and educational information for the ward.

**Ampfield and Braishfield** is one of the Test Valley's twenty wards. It has an area of **2183.18** hectares which represents **3.5%** of the total area of Test Valley; in terms of area, Ampfield and Braishfield is Test Valley's **eighth largest** ward. The ward's population is **2,613** and its population density is **1.20** people per hectare, which is lower than the borough's average population density of **2.15** people per hectare.



Ampfield and Braishfield is a ward in the south-eastern part of Test Valley, with the eastern edge of the ward bordering Hursley (part of Winchester City Council's area) and the south-eastern edge bordering Hiltingbury and Chandlers Ford (part of Eastleigh Borough Council's area). The ward is rural in nature, containing open countryside, farmland, a number of small settlements and the two main villages of Ampfield, in the middle of the ward, and Braishfield in the north.

## Elected Representatives

### Hampshire County Council

**Councillor Alan Dowden**

**Division:** Baddesley

**Email:** alan.dowden@hants.gov.uk

**Telephone:** 02380 266458

### Test Valley Borough Council

**Councillor Sally Yalden**

**Ward:** Ampfield and Braishfield

**Email:** cllrsyalden@testvalley.gov.uk

**Telephone:** 01794 368 397

### Parish Councils

Ampfield and Braishfield ward includes parts of following parishes:

- **Ampfield**
- **Braishfield**
- **Michelmersh and Timsbury**

Further information about this, and Test Valley's other parishes, can be found on the [council's website](#).

# Population



**2,613**

*Population 2022*



**12.2%**  
*increase*



**2,931**

*Estimated  
population in 2029*



**3.5% of the population are military veterans**  
**16.6% of the population are school children**

## Age breakdown

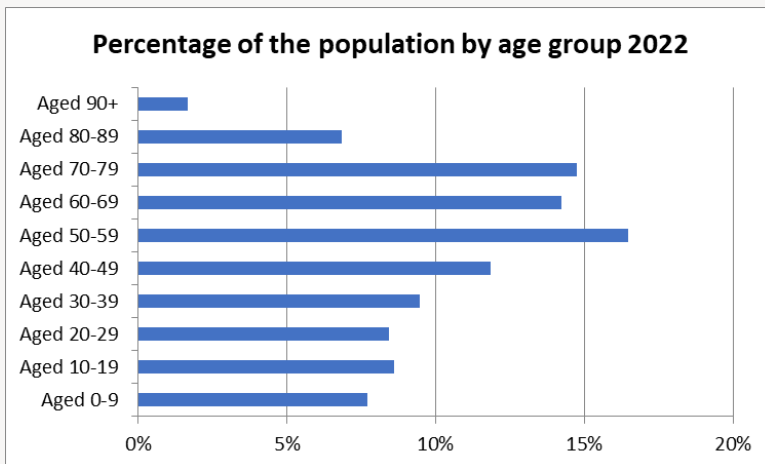
At 16.3% Ampfield and Braishfield has a significantly smaller percentage of **young people** (aged 0-19) than the borough average of 22.6%. By 2029, the proportion of young people will decrease to 13.4%, and will then be 8.0% lower than the borough average.

At 17.9%, Ampfield and Braishfield has a lower percentage of **young adults** (aged 20-39) than the borough average of 19.5%. The proportion of young adults living in the ward is expected to decrease by 0.2% between 2022 and 2029, similar to the expected fall of 0.9% across the borough.

**Middle aged residents** (aged 40-69) constitute 42.6% of Ampfield and Braishfield population, which is above the borough average of 40.0%. This is forecast to slightly decrease by 1.9% between now and 2029, when it'll be 0.9% higher than the borough average.

At 23.3%, Ampfield and Braishfield has a significantly higher percentage of those **aged 70 and over**, 5.4% above the borough average. By 2029 this percentage is forecast to increase by 4.9%, faster than the forecast of 2.2% for the borough as a whole.

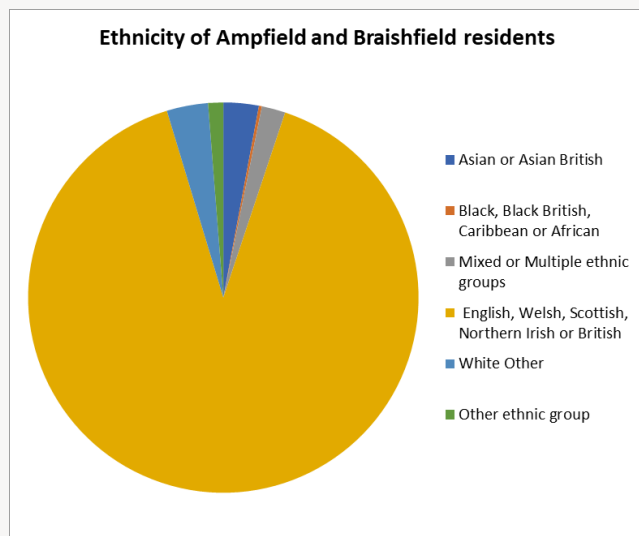
**Percentage of the population by age group 2022**



## Population Data

This population data is taken from the Small Area Population Forecasts (SAPF), provided by Hampshire County Council. Further information on this is available online at: <https://www.hants.gov.uk/landplanningandenvironment/facts-figures/population/estimates-forecasts>.

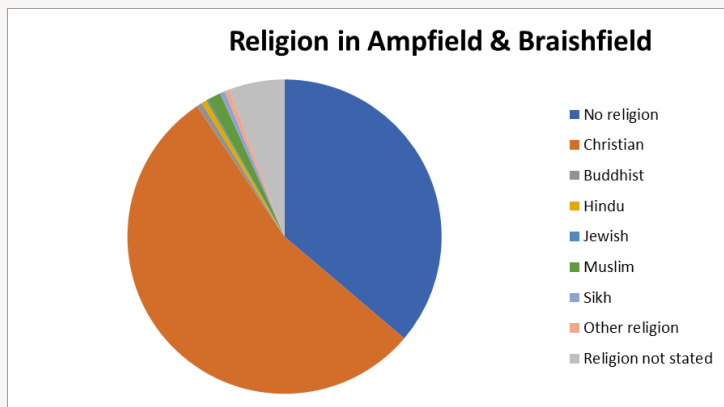
## Ethnicity



Asian or Asian British	Black, Black British, Caribbean or African	Mixed or Multiple ethnic groups	English, Welsh, Scottish, Northern Irish or British	White Other	Other ethnic group
2.9%	0.3%	2.0%	90.2%	3.4%	1.3%

The graph shows the ethnic groups within Ampfield and Braishfield by percentage. At the 2021 Census, 90.2% of Ampfield and Braishfield's population as White British. This is higher than the borough average of 88.8%. Ampfield and Braishfield's level of ethnic diversity is lower than England as a whole, where only 73.5% of the population are White British.

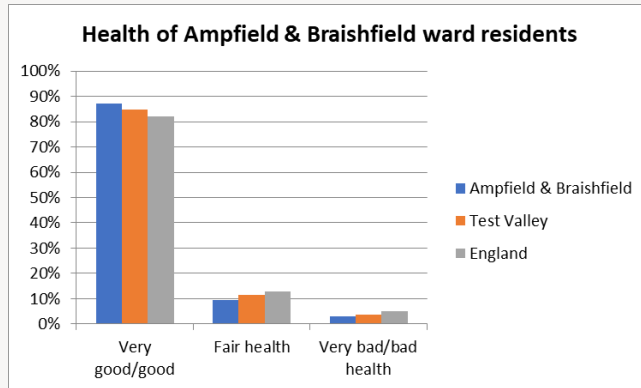
## Religion



No religion	Christian	Buddhist	Hindu	Jewish	Muslim	Sikh	Other religion	Religion not stated
36.2%	54.4%	0.6%	0.5%	0.2%	1.4%	0.5%	0.5%	5.7%

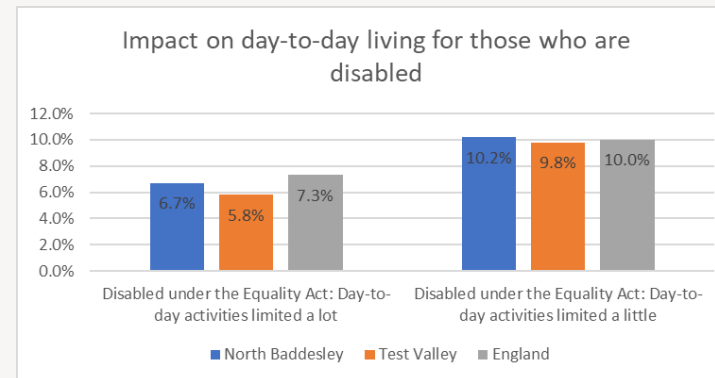
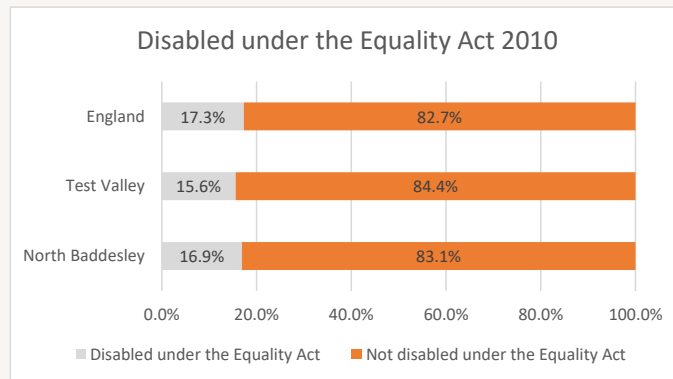
At the 2021 Census, the majority of Ampfield and Braishfield residents (54.4%) classify themselves as Christian, which is higher than both the borough average of 50.5% and the English average of 46.3%. The next largest group are those that say they have no religion (36.2%) which is lower than both the Test Valley average (40.6%) but the English average (36.7%). Of those groups that do adhere to a religion, Islam is the second largest faith group, constituting 1.4% of the population of the ward. By comparison, 6.7% of England's population identify as being Muslim.

## Health



At the 2021 Census, 87.2% of residents in Ampfield and Braishfield said they felt that they were in very good or good health. This is higher than both the average for Test Valley (84.7%) and the average for England (82.2%). 3.1% of the population rated their health as bad or very bad, which is lower than equivalent figures for both the borough (3.8%) and England (5.2%).

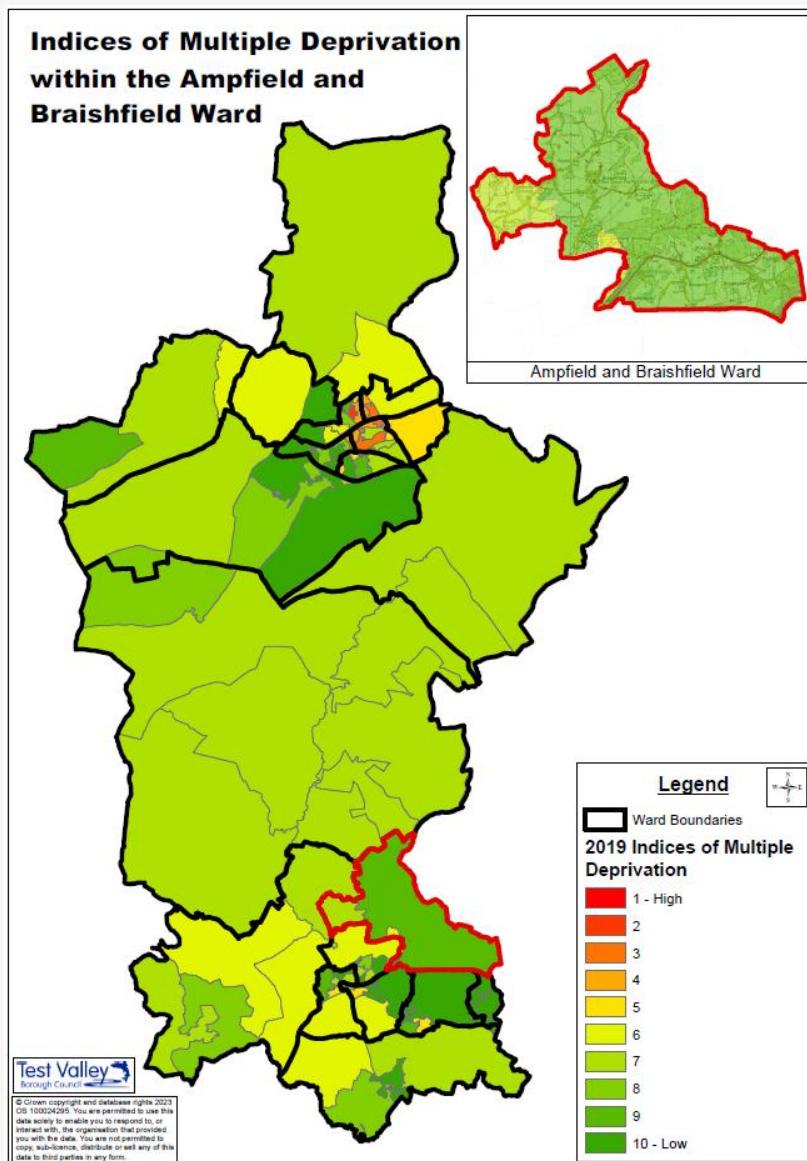
## Disability



At the 2021 Census, 13.3% of Ampfield and Braishfield's population identified as having a disability, as defined by the Equality Act 2010. This is a lower proportion than the population of Test Valley as a whole, where 15.6% identified as having a disability, but lower than the proportion of people in England as a whole, where the figure was 17.3%.

Of this 13.3%, 3.9% of the ward's population said they had a disability that limited their day-to-day activities a lot, lower than the equivalent figure for Test Valley (5.8%) and the English average (7.3%). 9.4% said they had a disability that impacted them a little, lower than the respective figures for the borough and country.

## Deprivation



The English Index of Multiple Deprivation 2019 is designed to identify areas where communities lack resources and are in need. To do this, seven factors are considered, which are:

- income deprivation
- employment deprivation
- education, skills and training deprivation
- health deprivation and disability
- crime
- barriers to housing and services
- living environment deprivation.

Areas are scored on each of these factors and ranked nationally from least deprived to most deprived.

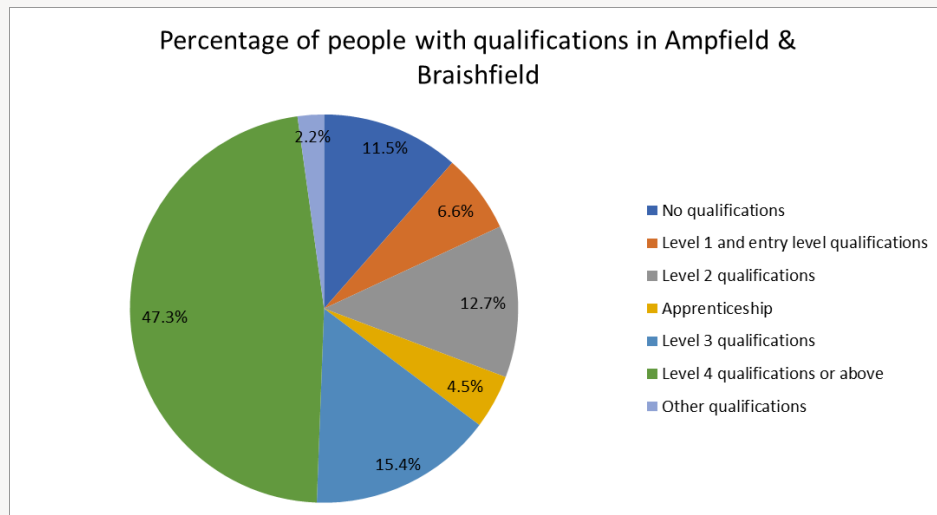
This map shows the deprivation scores for Ampfield and Braishfield all areas in Test Valley. Of 32,844 areas ranked across the country, almost all of the ward falls into the majority of the ward is in the 20% of is in the **20% of least deprived** areas in the country very small area to the ward's west, as seen on the map, falls within the 30% of least deprived areas instead.

More specifically, the ward ranks within the top 10% of most deprived areas when it comes to physical proximity of local services. Meanwhile, the area is also in the top 20% of most deprived areas for its 'indoors' living environment; this is defined by the number of houses with central heating as well as the proportion of social and private houses that are in a poor condition (as defined by the Decent Homes Standard).

*Further information about the Department for Levelling Up, Housing & Communities 2019 English Indices of Deprivation is available online at: <https://www.gov.uk/government/statistics/english-indices-of-deprivation-2019>*

# Education and employment

## Qualifications



The pie chart shows the qualifications gained Ampfield and Braishfield residents aged 16-74 years, according to the 2021 Census.

86.5% of people living in Ampfield and Braishfield have at least one GCSE or equivalent qualification, a figure which is higher than both the Test Valley average of 83.3% and the English average of 79.1%.

This means that 11.5% of Ampfield and Braishfield residents between 16 and 74 have no academic, vocational or professional qualifications, which is 2.6% lower than the borough average and 6.6% lower than the English average.

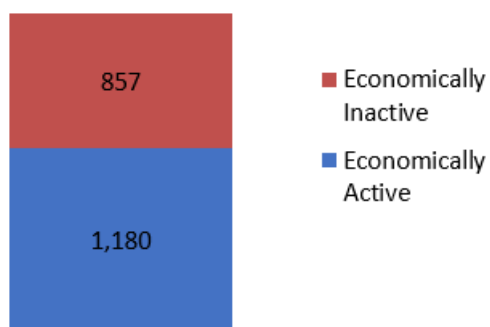
In addition, 47.3% of Ampfield and Braishfield residents have a level 4 qualification or above, which is equivalent to at least an undergraduate degree. This is higher than the borough average of 35.7% and the English average of 33.9%. Similarly, 4.5% of the ward's population have undertaken an apprenticeship.

No qualifications	No academic or professional qualifications.
Level 1	any GCSEs at other grades, O levels or CSEs (any grades), Foundation Welsh Baccalaureate, one Advanced Subsidiary (AS) level, NVQ (National Vocational Qualification) level 1, Basic or Essential Skills, skills for life, literacy and numeracy, Level 2 Scottish Vocational qualifications
Level 2	five or more GCSEs (A* to C or 9 to 4), O levels (passes), CSEs (grade 1), Intermediate Welsh Baccalaureate, one A level, two to three AS levels, NVQ level 2, Business and Technology Education Council (BTEC) General, City and Guilds Craft, Level 2 Scottish Vocational qualifications
Apprenticeship	Has completed any form of apprenticeship, at any level.
Level 3	two or more A levels, four or more AS levels, Advanced Welsh Baccalaureate, NVQ level 3, City and Guilds Advanced Craft, Ordinary National Certificate (ONC), Ordinary National Diploma (OND), BTEC National, International Baccalaureate, Level 3 Scottish Vocational qualifications
Level 4 or above	degree, foundation degree, Doctor of Philosophy (PhD), Master's degrees, Higher National Diploma (HND) or Higher National Certificate (HNC), NVQ level 4 or above, professional qualifications (for example, teaching or nursing)
Other qualification	Any other qualifications, equivalent unknown



## Economic Activity

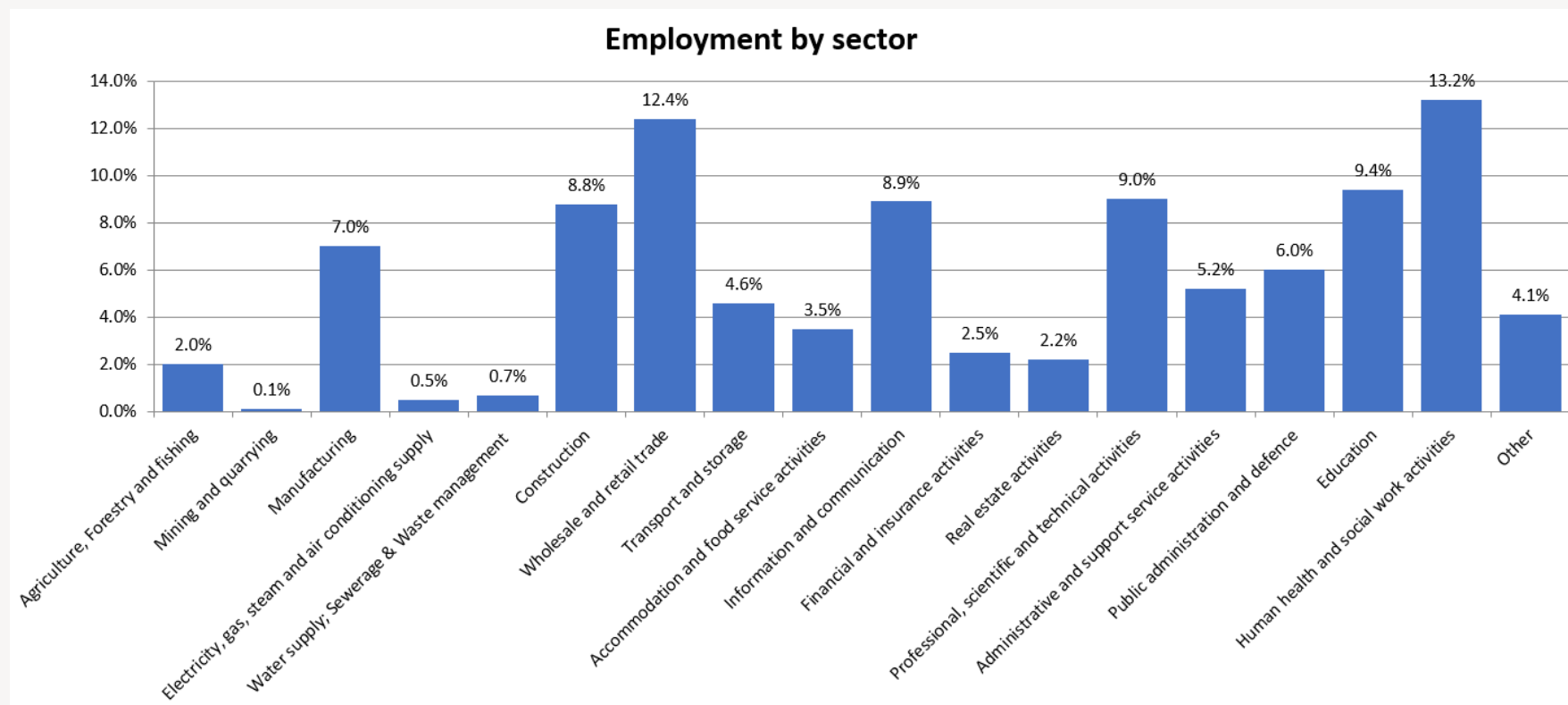
### Economic activity (count)



According to the 2021 Census, 57.4% of Ampfield and Braishfield residents aged 16-74 are economically active, lower than Test Valley as a whole where the figure is 63.8% of residents. This includes people in full-, part- and self-employment, those who are actively seeking a job, and full-time students.

The remaining 42.1% of residents aged 16-74 are economically inactive, compared to 36.1% of Test Valley residents. This includes people who are retired, long-term sick or disabled, or who look after the home and family.

## Employment by sector



This graph shows the different industries residents of Ampfield and Braishfield ward work in, according to the 2021 Census. The largest sector employing people in the ward is Human health and social work activities (13.2%) followed by Wholesale and retail trade (12.4%) and then by Education (9.4%).

# Properties

Total number of properties

# 1,002

## Dwellings



**9.4%**  
*Terraced*



**13.9%**  
*Semi-Detached*



**64.2%**  
*Detached*

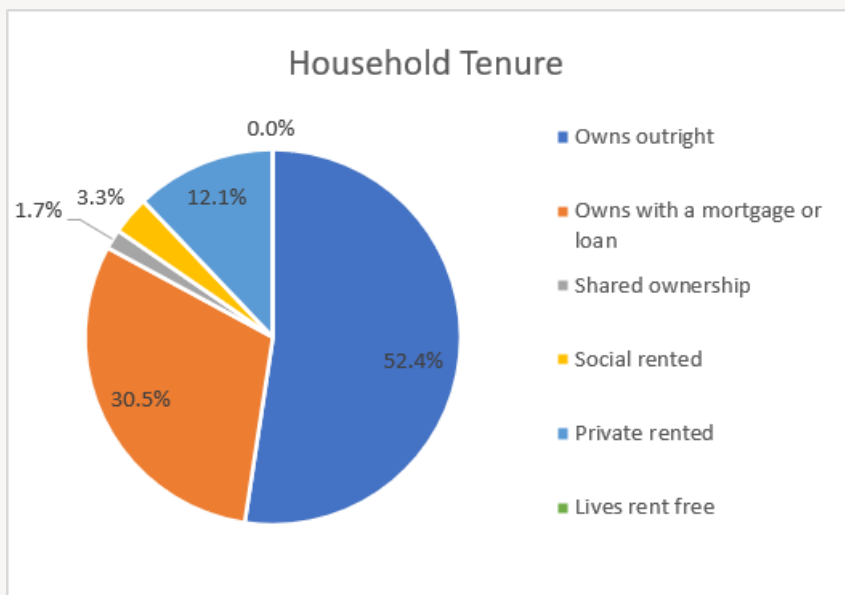


**2.4%**  
*Flat*



**10.2%**  
*Mobile or other*

## Household Tenure



Household tenure refers to the financial arrangements under which people occupy their homes and is taken from the 2021 Census.

This pie chart depicts the tenure of households in Ampfield and Braishfield. 82.9% of people in the ward live in a property which they own outright or with a mortgage or loan. This is higher than the average for Test Valley, which is 69.0%, and higher than the average for England, which is 61.3%.

3.3% of residents rent their property from a Housing Association, which is significantly lower than the borough average of 14.3% as well as the English average of 17.1%. 12.1% of residents privately rent their property; this figure is lower than the borough average of 14.8% and the figure for England of 20.5%.

1.7% of households are part of a shared ownership scheme whilst 0.0% live rent free.

# Community facilities

Across Ampfield and Braishfield, there are a number of community facilities including a village hall and sports facilities in each parish. The ward is also home to the Sir Harold Hillier Gardens, an 180 acre arboretum situated on the edge of Romsey.

Both Ampfield and Braishfield have a primary school located within them, with most other facilities, like railway stations, shops, secondary schools, railway stations and GP surgeries being located in Romsey or Chandlers Ford.



## Further Information

The Community Team at Test Valley Borough Council provide support to local councillors and communities. They are also able to signpost local organisations to grant funding and other resources that may be available. To contact them, please email:

[communityteam@testvalley.gov.uk](mailto:communityteam@testvalley.gov.uk)

The information in this profile has been prepared by Test Valley Borough Council's Policy Team. If you have any further queries or would like to talk to us about other information you would like to see, then please contact one of the Policy Team who will be happy to help:

[policyteam@testvalley.gov.uk](mailto:policyteam@testvalley.gov.uk)