

# Anna Ward Profile



2023

Test Valley  
Borough Council



# Table of contents

- Introduction and elected representatives, page 2

## Population, pages 3-6

- Population changes and age breakdown, page 3
- Ethnicity and religion, page 4
- Health and disability, page 5
- Deprivation, page 6

## Education and employment, pages 7-9

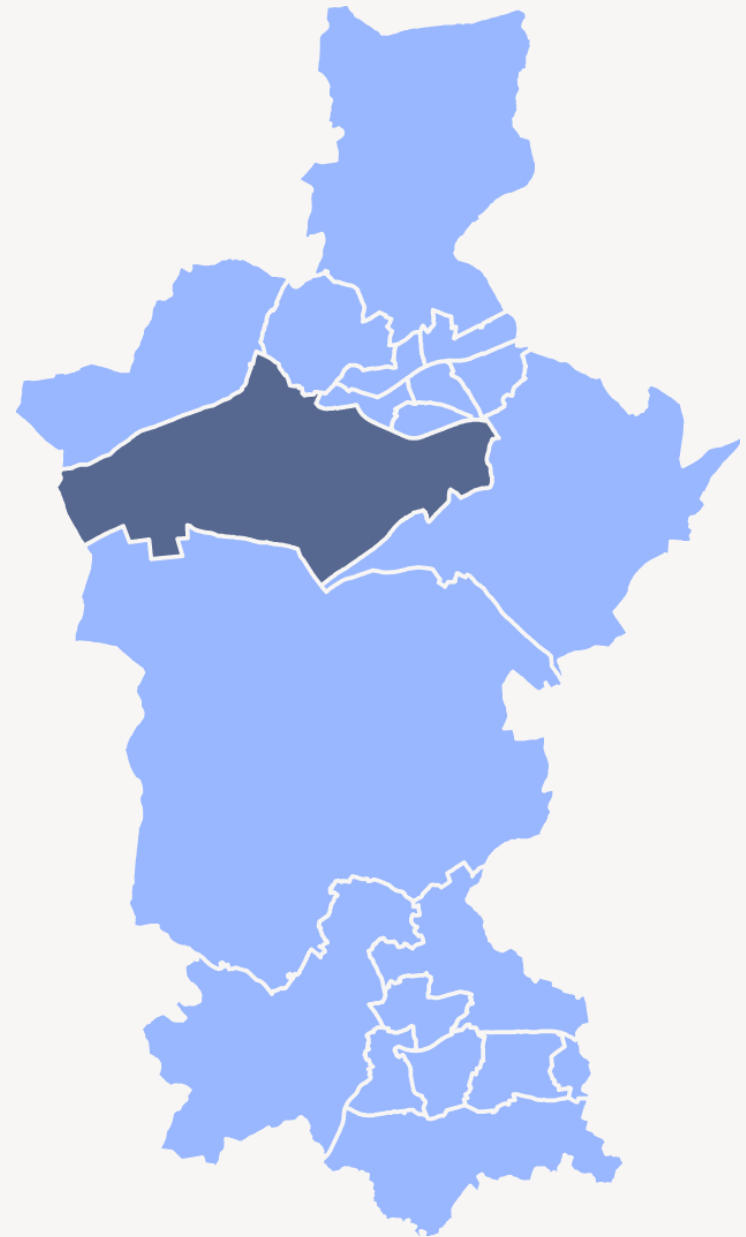
- Qualifications, page 7
- Economic activity, page 8
- Employment by sector, page 9

## Properties, page 10

- Number of properties, type of properties and household tenure, page 10

## Community facilities, page 11

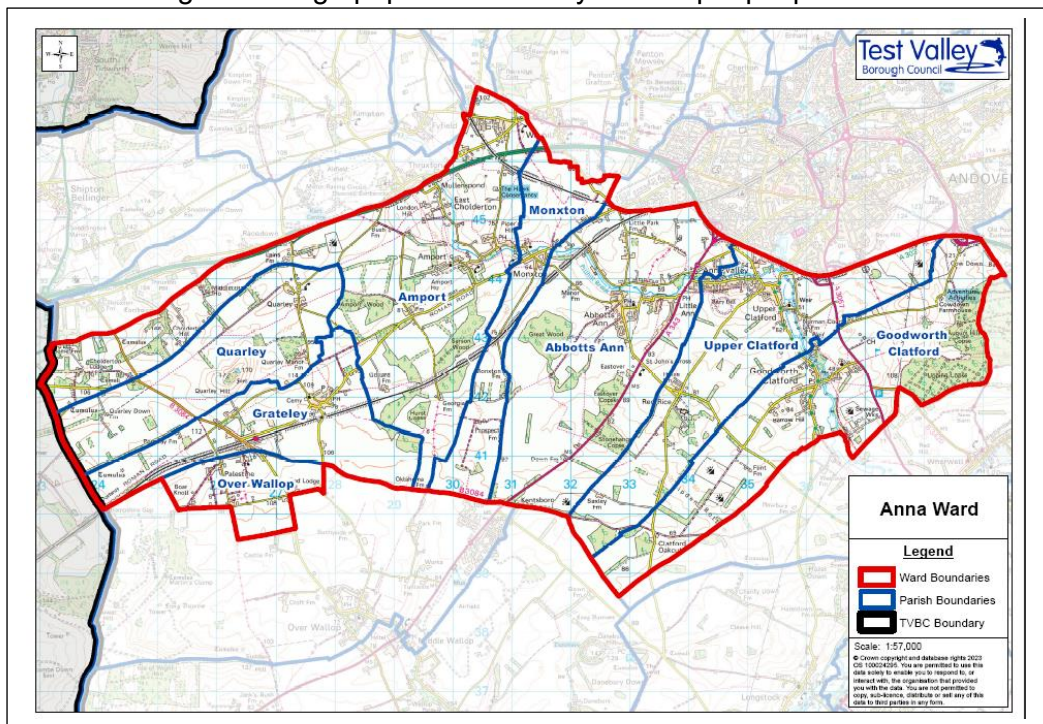
## Further information, page 11



# Anna Ward Profile

This profile provides a summary of the latest available information on the demographic make-up of the ward of Anna within Test Valley. It looks at information on topics such as the population structure, economic, housing, health, and educational information for the ward.

**Anna** is one of the Test Valley's twenty wards. It has an area of 6,991.25 hectares which represents **11.1%** of the total area of Test Valley; in terms of area, **Anna** is Test Valley's **4<sup>th</sup> largest** ward. The ward's population is 6,189 and its population density is **0.89** people per hectare, which is far lower than the borough's average population density of **2.15** people per hectare.



The ward of Anna is south of Andover, towards the centre of Test Valley. It covers the parishes of Amport, Grateley, Quarley, Monxton, Abbotts Ann, Goodworth Clatford and Upper Clatford as well as the village of Palestine within Over Wallop parish.

## Elected Representatives Hampshire County Council

**Councillor Chris Donnelly**

**Division:** Andover West

**Email:** chirs.donnelly@hants.gov.uk

**Telephone:** 07738 289858

**Councillor David Drew**

**Division:** Test Valley Central

**Email:** cllrD.Drew@hants.gov.uk

**Telephone:** 07738 289902

## Test Valley Borough Council

**Councillor Maureen Flood**

**Email:** cllrmflood@testvalley.gov.uk

**Telephone:** 01264 710790

**Councillor Susanne Hasselmann**

**Email:** cllrshasslmann@testvalley.gov.uk

**Telephone:** 01264 860741

## Parish Councils

Anna ward contains the following parish:

- **Amport**
- **Grateley**
- **Quarley**
- **Monxton**
- **Abbotts Ann**
- **Goodworth Clatford**
- **Upper Clatford**

Further information about this, and Test Valley's other parishes, can be found on the [council's website](#).

# Population



**6,175**

Population 2023



**3.7%**  
increase



**6,215**

Estimated  
population in 2029



**5.5%** of the population are military veterans  
**16.7%** of the population are school children

## Age breakdown

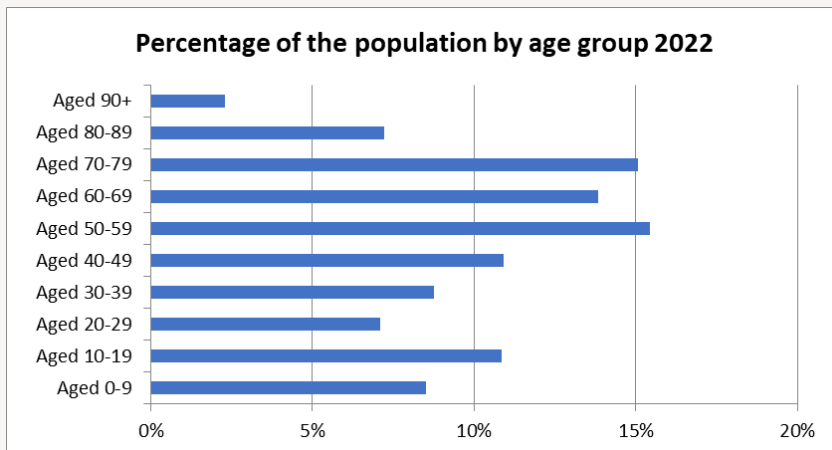
At 19.4% Anna has a smaller percentage of **young people** (aged 0-19) than the borough average of 22.6%. By 2029, the proportion of young people will increase to 22.6%, and will then be 1.1% lower than the borough average.

At 15.9%, Anna has a smaller percentage of **young adults** (aged 20-39) than the borough average of 19.5%. The proportion of young adults living in the ward is expected to fall by 0.9% between 2022 and 2029, the same as the fall of 0.9% across the borough.

**Middle aged residents** (aged 40-69) constitute 40.2% of Anna's population, which is higher than the borough average of 40.0%. This is forecast to decrease to 39.2% by 2029, 0.6% below the borough average.

At 24.6%, Anna has a higher percentage of those **aged 70 and over**, 6.7% above the borough average. By 2029 this percentage is forecast to increase by 3.0%, higher than the rate of increase of 2.2% that is forecast for the borough as a whole.

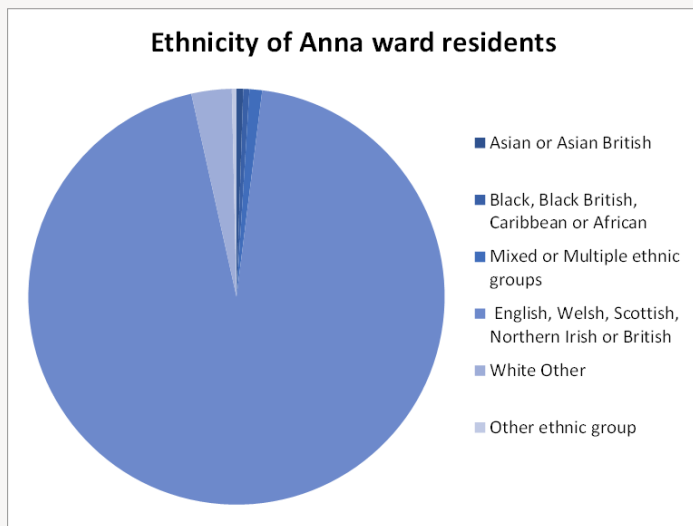
Percentage of the population by age group 2022



## Population Data

This population data is taken from the Small Area Population Forecasts (SAPF), provided by Hampshire County Council. Further information on this is available online at: <https://www.hants.gov.uk/landplanningandenvironment/facts-figures/population/estimates-forecasts>.

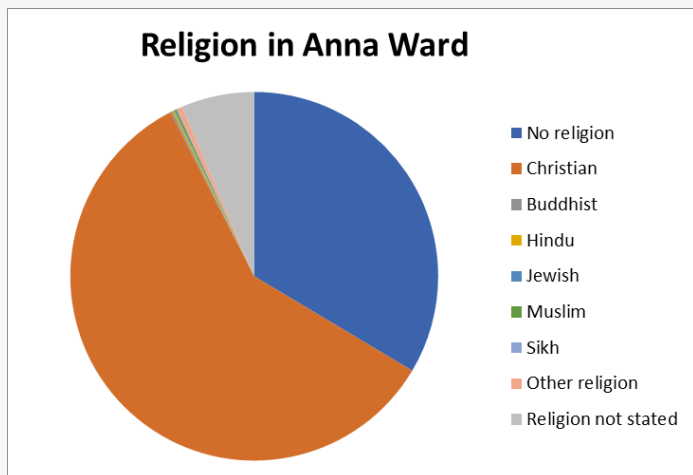
## Ethnicity



Asian or Asian British	Black, Black British, Caribbean or African	Mixed or Multiple ethnic groups	English, Welsh, Scottish, Northern Irish or British	White Other	Other ethnic group
0.5%	0.5%	1.0%	94.5%	3.1%	0.4%

The graph shows the ethnic groups within Anna by percentage. At the 2021 Census, 94.5% of Anna’s population identified as White British. This is higher than the borough average of 88.8%. Anna’s level of ethnic diversity is lower than England as a whole, where only 73.5% of the population are White British.

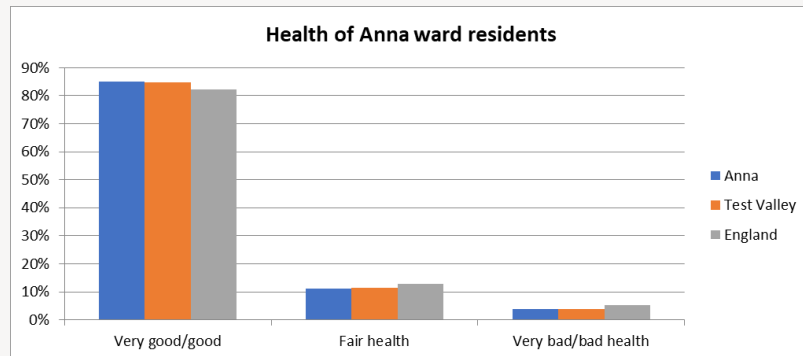
## Religion



No religion	Christian	Buddhist	Hindu	Jewish	Muslim	Sikh	Other religion	Religion not stated
33.6%	58.9%	0.2%	0.2%	0.1%	0.2%	0.1%	0.5%	6.4%

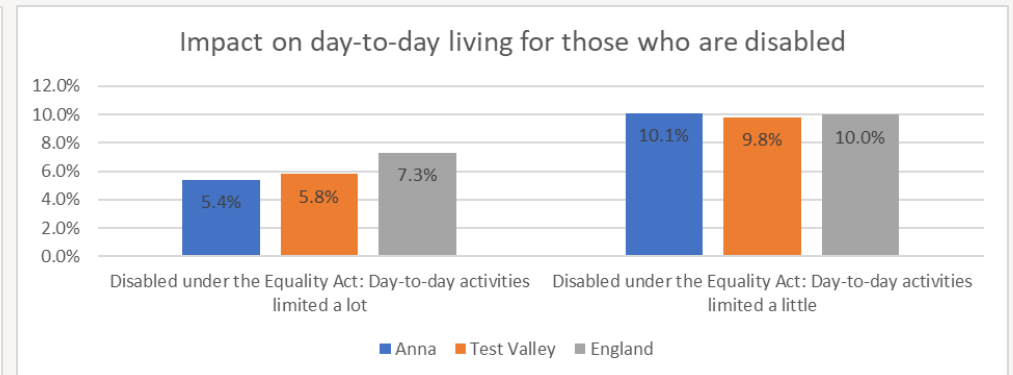
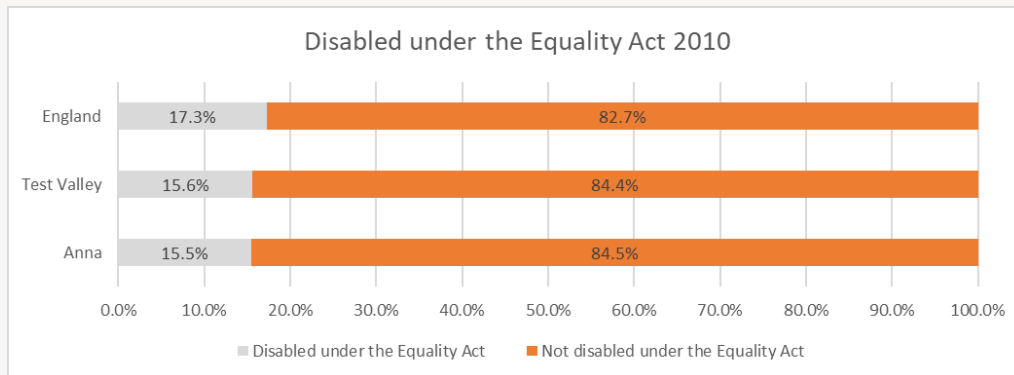
At the 2021 Census, the largest proportion of Anna residents (58.9%) classify themselves as Christian, which is higher than the borough average of 50.5% and higher than the English average of 46.3%. The next largest group are those that say they have no religion (33.6%), which is slightly lower than the Test Valley average (40.6%) and lower than the English average (36.7%). Of those groups that do adhere to a religion, Buddhism, Hinduism and Islam are the second largest groups at 0.2%.

## Health



At the 2021 Census, 85.0% of residents in Anna said they felt they were in very good or good health. This is higher than the average for Test Valley (84.7%), and higher than the average for England (82.2%). 3.9% of the population rated their health as bad or very bad, which is higher than the equivalent figure for the borough (3.8%) and lower than the equivalent for England (5.2%)

## Disability



At the 2021 Census, 15.5% of Anna's population identified as having a disability, as defined by the Equality Act 2010. This is a lower proportion than the population of Test Valley as a whole, where 15.6% identified as having a disability, and lower than England, where the figure was 17.3%.

Of this 15.5%, 5.4% of the ward's population said they had a disability that limited their day-to-day activities a lot, whilst 10.1% said they had a disability that impacted them a little. Of England's 17.3%, 7.3% of the population said they had a disability that limited their day-to-day activities a lot, 1.9% higher than Anna's population, whilst 9.8% said they had a disability that impacted them a little, 0.3% lower than Anna's population.

## Deprivation

The English Index of Multiple Deprivation 2019 is designed to identify areas where communities lack resources and are in need. To do this, seven factors are considered, which are:

- income deprivation
- employment deprivation
- education, skills and training deprivation
- health deprivation and disability
- crime
- barriers to housing and services
- living environment deprivation.

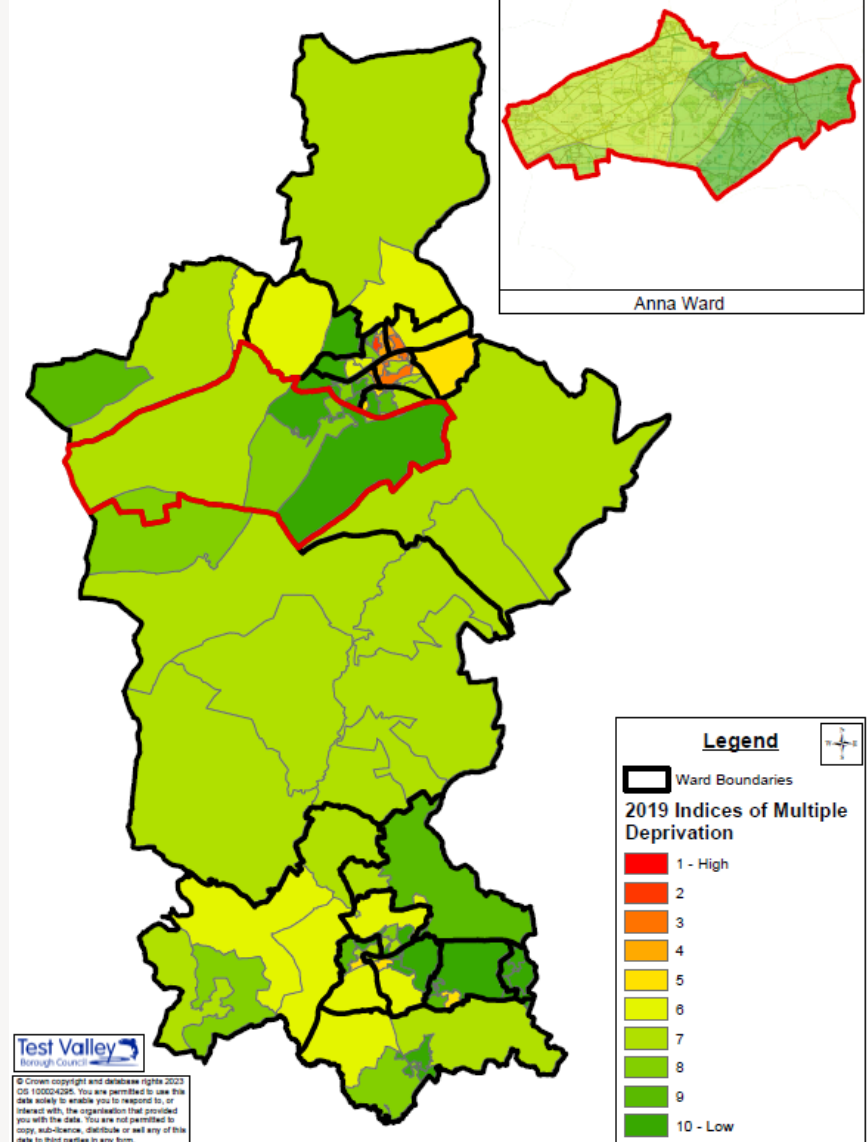
Areas are scored on each of these factors and ranked nationally from least deprived to most deprived.

This map shows the deprivation scores for the ward of Anna against all areas in Test Valley. These are measured in Super Output Areas, four of which make up Anna. Of 32,844 areas ranked across the country, areas of Anna rank between 20,082<sup>nd</sup> and 30,723<sup>rd</sup>, this puts all of the ward in the **70% of least deprived** areas in the country.

Despite this, the ward falls within the **20% of most deprived** areas with regards to **geographical barriers**. Additionally, the ward falls into the **40% of most deprived** areas for **barriers to housing and services**.

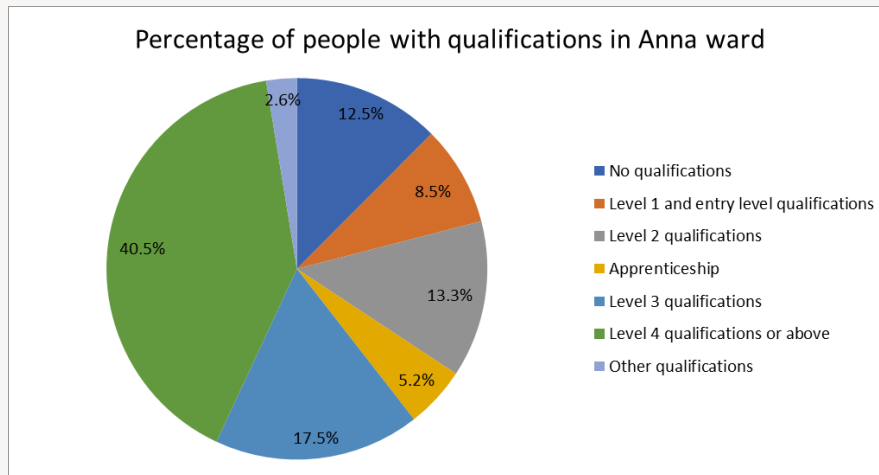
Further information about the Department for Levelling Up, Housing & Communities 2019 English Indices of Deprivation is available online at: <https://www.gov.uk/government/statistics/english-indices-of-deprivation-2019>

### Indices of Multiple Deprivation within the Anna Ward



# Education and employment

## Qualifications



The pie chart shows the qualifications gained by Anna's residents aged 16-74 years, according to the 2021 Census.

85.0% of people living in Anna have at least one GCSE or equivalent qualification, a figure which is higher than the Test Valley average of 83.3% and the English average of 79.1%.

This means that 12.5% of Anna's residents between 16 and 74 have no academic, vocational, or professional qualifications, which is 0.7% lower than the borough average and 5.6% lower than the English average.

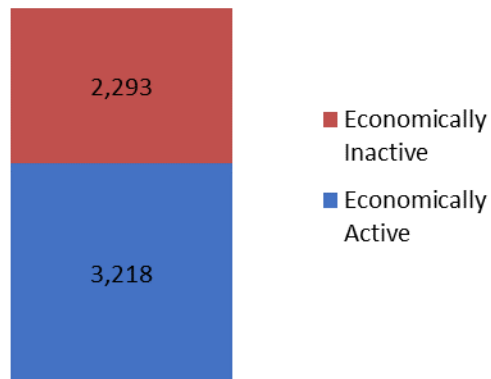
In addition, 40.5% of Anna residents have a level 4 qualification or above, which is equivalent to at least an undergraduate degree. This is higher than the borough average of 35.7% and the English average of 33.9%. Similarly, 5.2% of the ward's population have undertaken an apprenticeship.

No qualifications	No academic or professional qualifications.
Level 1	any GCSEs at other grades, O levels or CSEs (any grades), Foundation Welsh Baccalaureate, one Advanced Subsidiary (AS) level, NVQ (National Vocational Qualification) level 1, Basic or Essential Skills, skills for life, literacy and numeracy, Level 2 Scottish Vocational qualifications
Level 2	five or more GCSEs (A* to C or 9 to 4), O levels (passes), CSEs (grade 1), Intermediate Welsh Baccalaureate, one A level, two to three AS levels, NVQ level 2, Business and Technology Education Council (BTEC) General, City and Guilds Craft, Level 2 Scottish Vocational qualifications
Apprenticeship	Has completed any form of apprenticeship, at any level.
Level 3	two or more A levels, four or more AS levels, Advanced Welsh Baccalaureate, NVQ level 3, City and Guilds Advanced Craft, Ordinary National Certificate (ONC), Ordinary National Diploma (OND), BTEC National, International Baccalaureate, Level 3 Scottish Vocational qualifications
Level 4 or above	degree, foundation degree, Doctor of Philosophy (PhD), Master's degrees, Higher National Diploma (HND) or Higher National Certificate (HNC), NVQ level 4 or above, professional qualifications (for example, teaching or nursing)
Other qualification	Any other qualifications, equivalent unknown



## Economic Activity

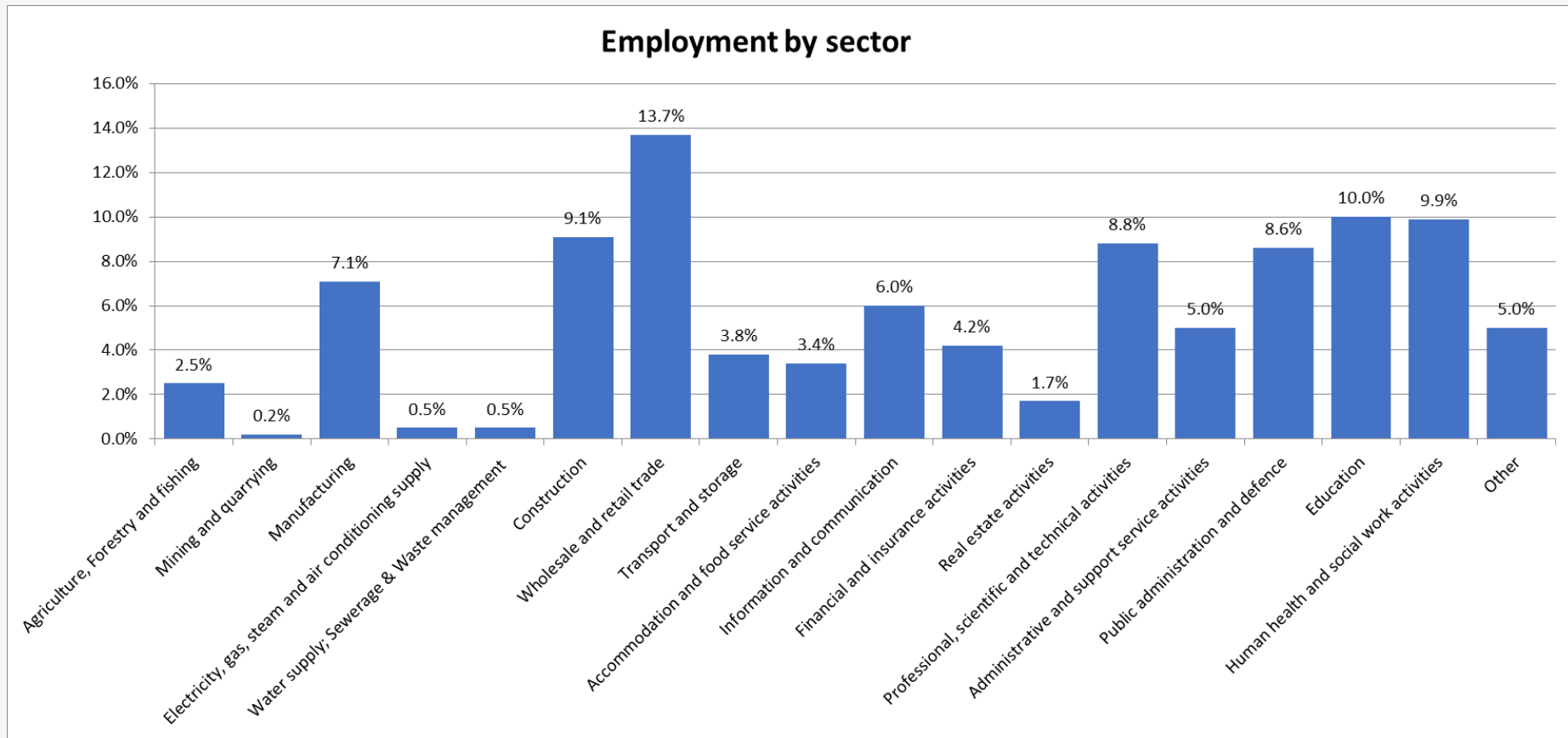
### Economic activity (count)



According to the 2021 Census, 57.6% of Anna's residents aged 16-74 are economically active, lower than Test Valley as a whole where the figure is 63.8% of residents. This includes people in full-, part- and self-employment, those who are actively seeking a job, and full-time students.

The remaining 41.6% of residents aged 16-74 are economically inactive, compared to 36.1% of Test Valley residents. This includes people who are retired, long-term sick or disabled, or who look after the home and family.

## Employment by sector



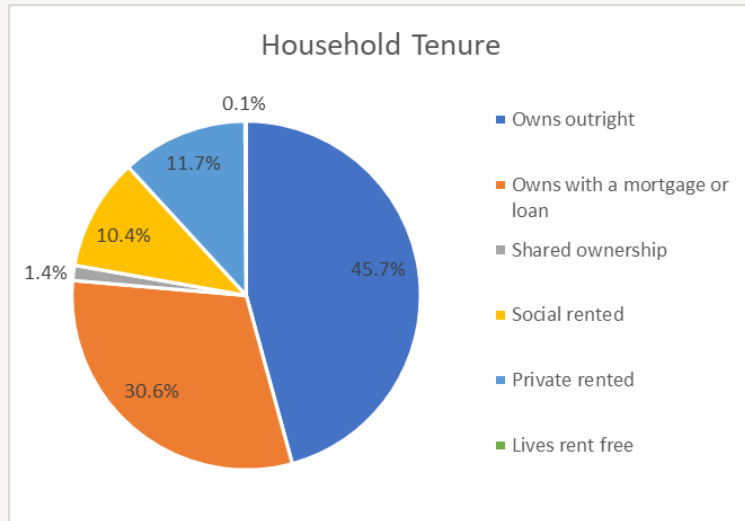
This graph shows the different industries residents of Anna ward work in, according to the 2021 Census. The largest sector employing people in Anna is Wholesale and retail trade (13.7%) followed by Education (10.0%) and then by Human health and social work activities (9.9%).

# Properties

Total number of properties

# 2,763

## Household Tenure



## Dwellings



**10.0%**  
*Terraced*



**29.1%**  
*Semi-Detached*



**52.6%**  
*Detached*



**3.8%**  
*Flat*



**4.5%**  
*Mobile or other*

Household tenure refers to the financial arrangements under which people occupy their homes and is taken from the 2021 Census.

This pie chart depicts the tenure of households in Anna. 45.7% of people in Anna live in a property which they own outright or with a mortgage or loan. This is lower than both the average for Test Valley, which is 69.0%, and the average for England, which is 61.3%.

10.4% of residents rent their property from a Housing Association, which is lower than the borough average of 14.3% as well as the English average of 17.1%. 11.7% of residents privately rent their property; this figure is lower than the borough average of 14.8% and lower than the figure for England of 20.5%.

1.4% of households are part of a shared ownership scheme whilst 0.1% live rent free.

# Community Facilities

As a largely rural ward on the edge of Andover, Anna contains a good number of facilities, spread across the villages that it's made up of. These include a number of primary schools in villages like Grateley, Amport, Abbots Ann and Goodworth Clatford; village halls in villages like Upper Clatford, Abbots Ann, Grateley, and Quarley. The ward is also home to the Hawk Conservancy, a charity dedicated to the conservation of birds of prey; their 22 acre site is open to as a visitor attraction throughout the year.

For the villages across Anna, Andover is the closest location of most other facilities, like shops, secondary schools, railway stations and GP surgeries. The ward also has a railway station at Grateley.



## Further Information

The Community Team at Test Valley Borough Council provide support to local councillors and communities. They are also able to signpost local organisations to grant funding and other resources that may be available. To contact them, please email:

[communityteam@testvalley.gov.uk](mailto:communityteam@testvalley.gov.uk)

The information in this profile has been prepared by Test Valley Borough Council's Policy Team. If you have any further queries or would like to talk to us about other information you would like to see, then please contact one of the Policy Team who will be happy to help:

[policyteam@testvalley.gov.uk](mailto:policyteam@testvalley.gov.uk)