

# Bourne Valley Ward Profile



2023

Test Valley  
Borough Council 



# Table of contents

- Introduction and elected representatives, page 2

## Population, pages 3-6

- Population changes and age breakdown, page 3
- Ethnicity and religion, page 4
- Health and disability, page 5
- Deprivation, page 6

## Education and employment, pages 7-9

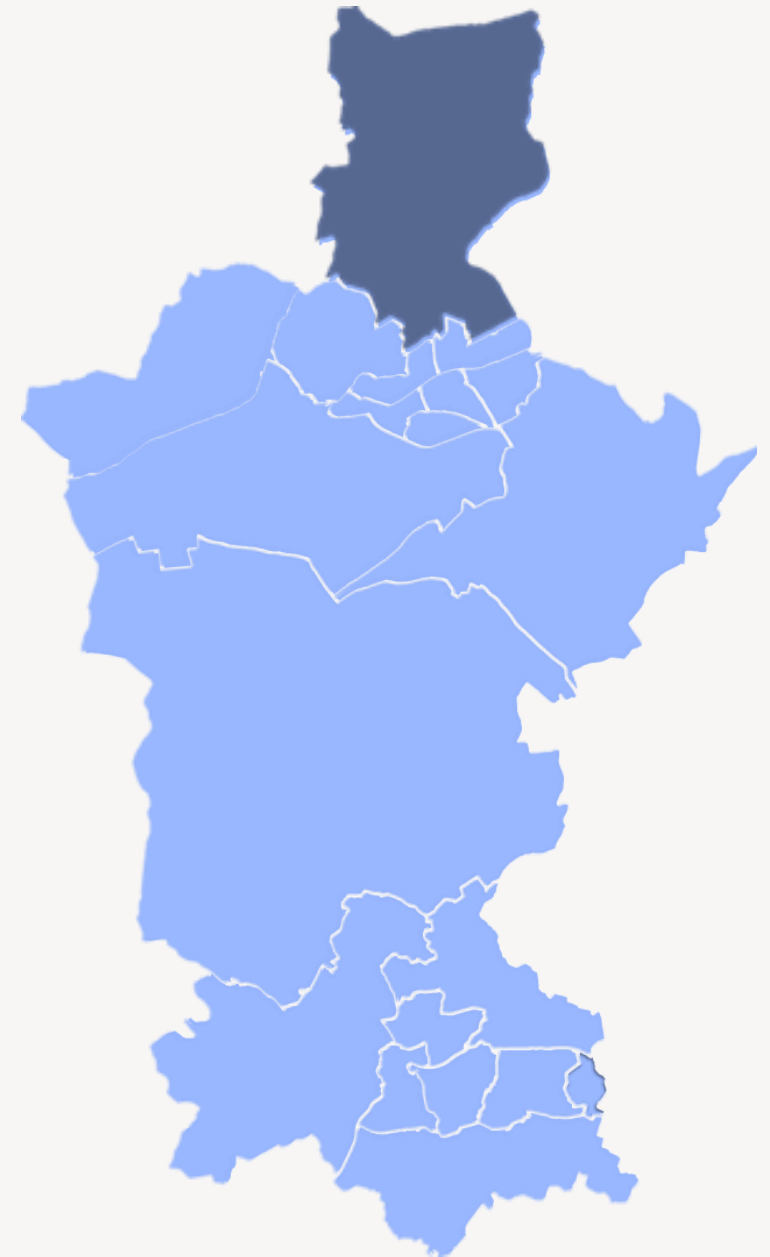
- Qualifications, page 7
- Economic activity, page 8
- Employment by sector, page 9

## Properties, page 10

- Number of properties, type of properties and household tenure, page 10

## Community facilities, page 11

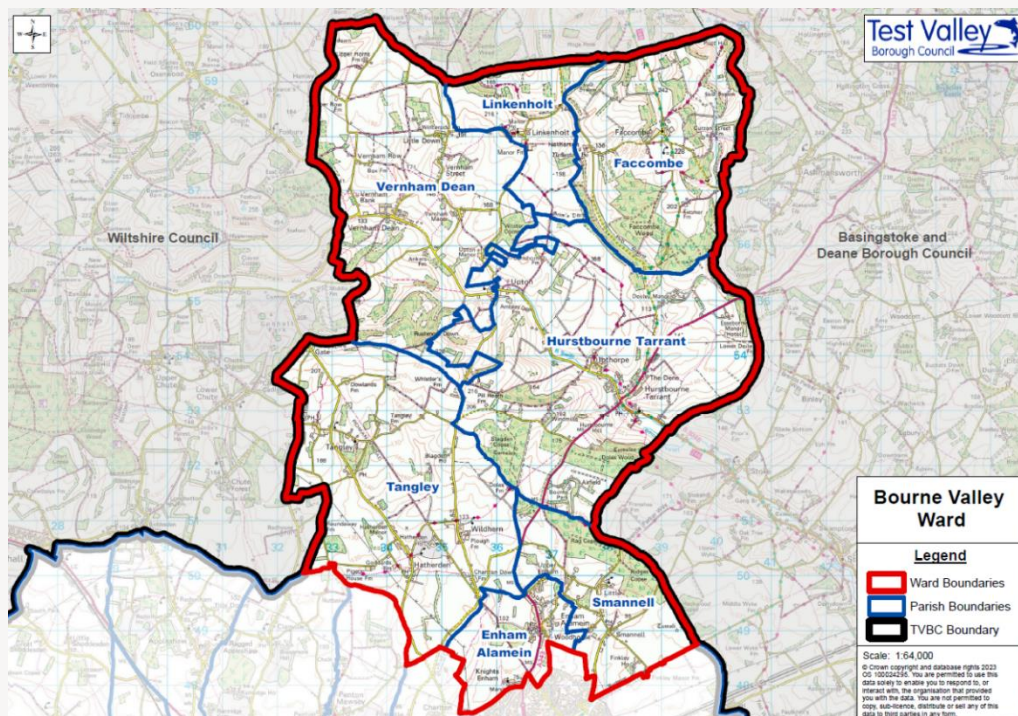
## Further information, page 11



# Bourne Valley Ward Profile

This profile provides a summary of the latest available information on the demographic make-up of the ward of Bourne Valley within Test Valley. It looks at information on topics such as the population structure, economic, housing, health and educational information for the ward.

**Bourne Valley** is one of the Test Valley's twenty wards. It has an area of 7,605.40 hectares which represents **12.1%** of the total area of Test Valley; in terms of area, **Bourne Valley** is Test Valley's **2<sup>nd</sup> largest** ward. The ward's population is 3,340 and its population density is **0.44** people per hectare, which is far lower than the borough's average population density of **2.15** people per hectare.



The ward of Bourne Valley is the northern-most part of Test Valley, bordering West Berkshire to the north, Basingstoke and Deane to the east, the town of Andover to the south, and Wiltshire to the west.

## Elected Representatives

### Hampshire County Council

**Councillor Kirsty North**

**Division:** Andover North

**Email:** [Kirsty.north@hants.gov.uk](mailto:Kirsty.north@hants.gov.uk)

**Telephone:** 07868 981320

### Test Valley Borough Council

**Councillor Phil North**

**Ward:** Bourne Valley

**Email:** [cllrpnorth@testvalley.gov.uk](mailto:cllrpnorth@testvalley.gov.uk)

## Parish Councils

Bourne Valley ward contains the following parishes:

- **Bourne Valley**
- **Enham Alamein**
- **Faccombe**
- **Hurstbourne Tarrant**
- **Linkenholt**
- **Smannell**
- **Tangley**
- **Vernham Dean**

Further information about this, and Test Valley's other parishes, can be found on the [council's website](#).

# Population



**3,340**

Population 2022



**3.7%**  
increase



**3,464**

Estimated  
population in 2029



**5.5%** of the population are military veterans  
**16.7%** of the population are school children

## Age breakdown

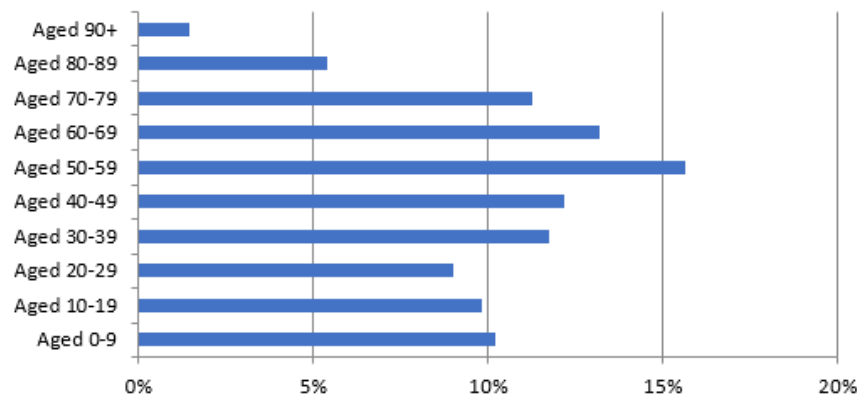
At 20.0% Bourne Valley has a smaller percentage of **young people** (aged 0-19) than the borough average of 22.6%. By 2029, the proportion of young people will increase to 22.6%, and will then be 1.1% lower than the borough average.

At 20.8%, Bourne Valley has a larger percentage of **young adults** (aged 20-39) than the borough average of 19.5%. The proportion of young adults living in the ward is expected to fall by 0.9% between 2022 and 2029, the same as the fall of 0.9% across the borough.

**Middle aged residents** (aged 40-69) constitute 41.0% of Bourne Valley's population, which is higher than the borough average of 40.0%. This is forecast to decrease to 39.2% by 2029, 0.6% below the borough average.

At 18.1%, Bourne Valley has a higher percentage of those **aged 70 and over**, 0.3% above the borough average. By 2029 this percentage is forecast to increase by 3.0%, higher than the rate of increase of 2.2% that is forecast for the borough as a whole.

**Percentage of the population by age group 2022**

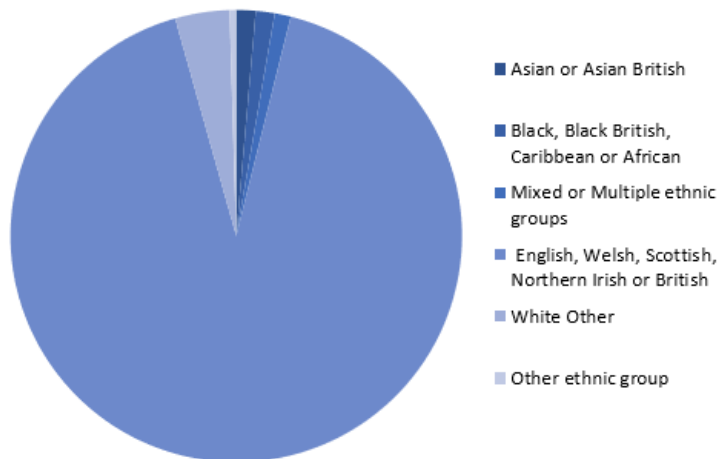


## Population Data

This population data is taken from the Small Area Population Forecasts (SAPF), provided by Hampshire County Council. Further information on this is available online at: <https://www.hants.gov.uk/landplanningandenvironment/facts-figures/population/estimates-forecasts>.

## Ethnicity

Ethnicity of Bourne Valley residents

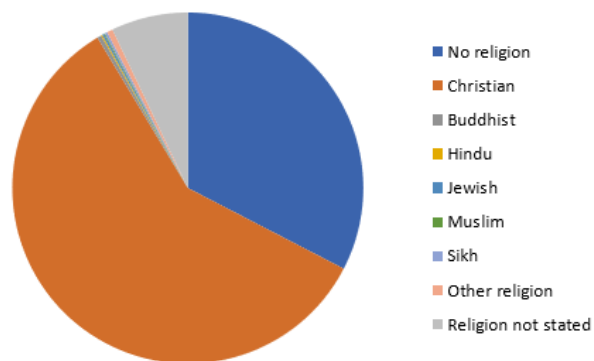


Asian or Asian British	Black, Black British, Caribbean or African	Mixed or Multiple ethnic groups	English, Welsh, Scottish, Northern Irish or British	White Other	Other ethnic group
1.4%	1.4%	1.2%	91.7%	3.9%	0.5%

The graph shows the ethnic groups within Bourne Valley by percentage. At the 2021 Census, 91.7% of Bourne Valley’s population identified as White British. This is higher than the borough average of 88.8%. Bourne Valley’s level of ethnic diversity is lower than England as a whole, where only 73.5% of the population are White British.

## Religion

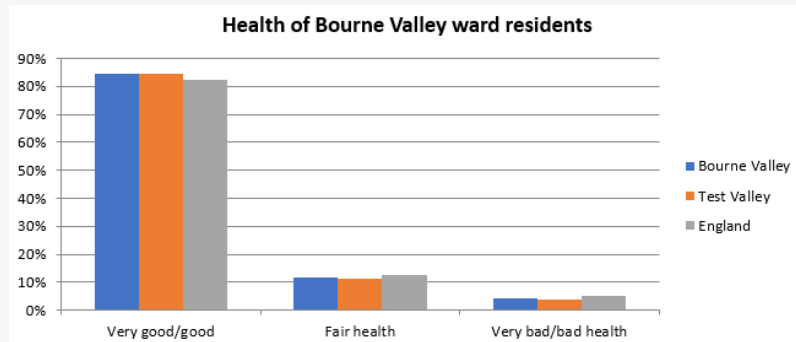
Religion in Bourne Valley



No religion	Christian	Buddhist	Hindu	Jewish	Muslim	Sikh	Other religion	Religion not stated
32.6%	58.8%	0.4%	0.1%	0.2%	0.1%	0.2%	0.5%	7.1%

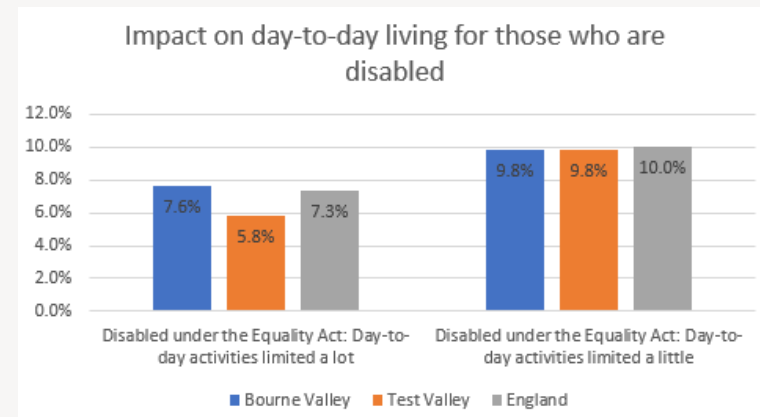
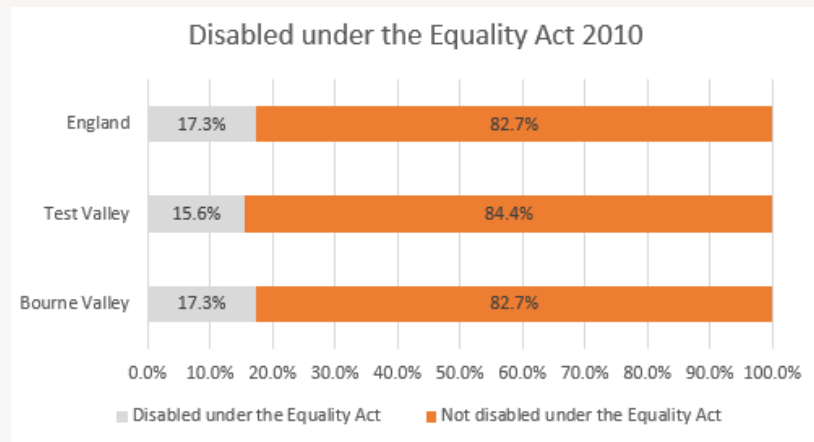
At the 2021 Census, the largest proportion of Bourne Valley residents (58.8%) classify themselves as Christian, which is higher than the borough average of 50.5% and higher than the English average of 46.3%. The next largest group are those that say they have no religion (32.6%), which is slightly lower than the Test Valley average (40.6%) and lower than the English average (36.7%). Of those groups that do adhere to a religion, Buddhism is the second largest group at 0.4%, this is 0.01% lower than the equivalent figure for England.

## Health



At the 2021 Census, 84.4% of residents in Bourne Valley said they felt they were in very good or good health. This is lower than the average for Test Valley (84.7%), and higher than the average for England (82.2%). 4.2% of the population rated their health as bad or very bad, which is higher than the equivalent figure for the borough (3.8%) and lower than the equivalent for England (5.2%)

## Disability

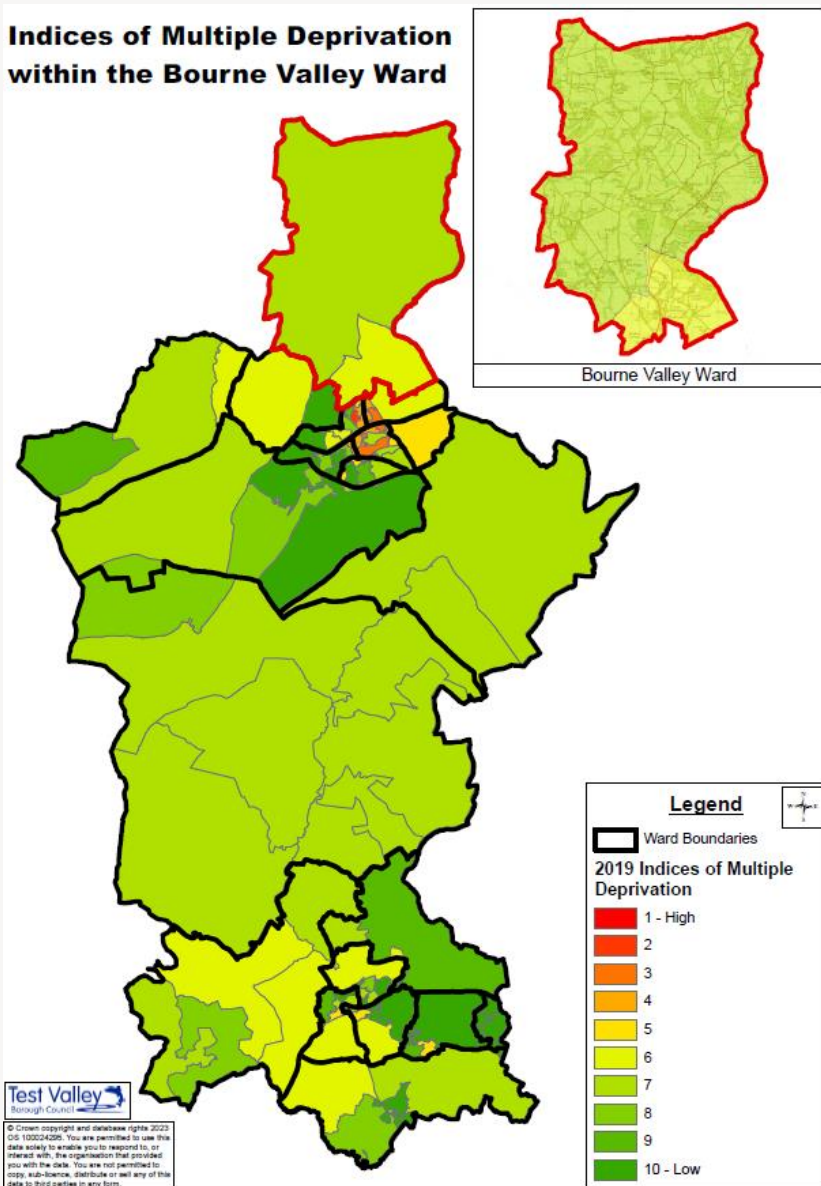


At the 2021 Census, 17.3% of Bourne Valley's population identified as having a disability, as defined by the Equality Act 2010. This is a higher proportion than the population of Test Valley as a whole, where 15.6% identified as having a disability, and the same as England, where the figure was 17.3%.

Of this 17.3%, 7.6% of the ward's population said they had a disability that limited their day-to-day activities a lot, whilst 9.8% said they had a disability that impacted them a little. These figures are both lower than the equivalent figures for Test Valley. Of England's 17.3%, 7.3% of the population said they had a disability that limited their day-to-day activities a lot, 0.3% lower than Bourne Valley's equivalent figure, whilst 9.8% said they had a disability that impacted them a little,

## Deprivation

### Indices of Multiple Deprivation within the Bourne Valley Ward



The English Index of Multiple Deprivation 2019 is designed to identify areas where communities lack resources and are in need. To do this, seven factors are considered, which are:

- income deprivation
- employment deprivation
- education, skills and training deprivation
- health deprivation and disability
- crime
- barriers to housing and services
- living environment deprivation.

Areas are scored on each of these factors and ranked nationally from least deprived to most deprived.

This map shows the deprivation scores for Bourne Valley against all areas in Test Valley. Of 32,844 areas ranked across the country, areas of Bourne Valley rank from 20,948<sup>th</sup> and 16,638<sup>th</sup>, this puts the ward in both the **40% of last deprived** areas in the country.

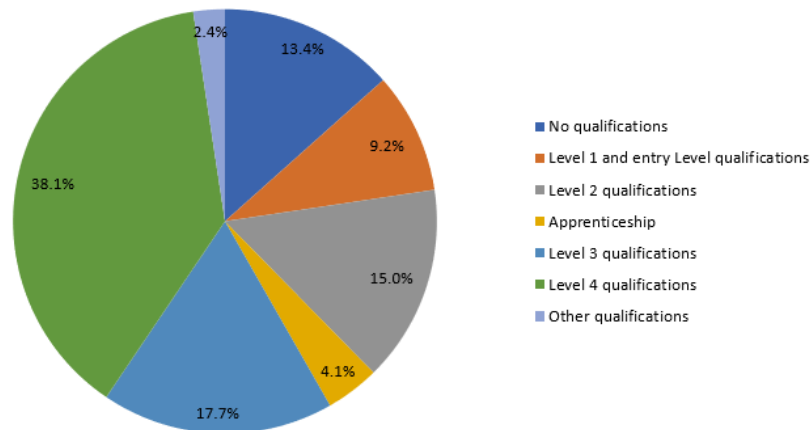
More specifically, the whole ward is in the top 30% of most deprived areas when it comes to physical proximity of local services; the north of the ward, the villages of Facombe, Linkenholt, Vernham Dean and Hurstbourne Tarrant, are within the top 10% of most deprived areas in this regard. This northern part of the ward is also in the top 20% of most deprived areas for its 'indoors' living environment; this is defined by the number of houses with central heating as well as the proportion of social and private houses that are in a poor condition (as defined by the Decent Homes Standard).

Further information about the Department for Levelling Up, Housing & Communities 2019 English Indices of Deprivation is available online at: <https://www.gov.uk/government/statistics/english-indices-of-deprivation-2019>

# Education and employment

## Qualifications

Percentage of people with qualifications in Bourne Valley



The pie chart shows the qualifications gained by Bourne Valley's residents aged 16-74 years, according to the 2021 Census.

84.1% of people living in Bourne Valley have at least one GCSE or equivalent qualification, a figure which is higher than the Test Valley average of 83.3% and the English average of 79.1%.

This means that 13.4% of Bourne Valley residents between 16 and 74 have no academic, vocational, or professional qualifications, which is 0.7% lower than the borough average and 4.7% lower than the English average.

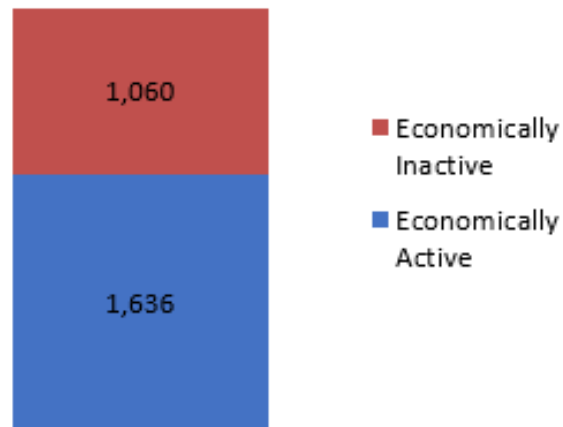
In addition, 38.1% of Bourne Valley residents have a level 4 qualification or above, which is equivalent to at least an undergraduate degree. This is higher than the borough average of 35.7% and the English average of 33.9%. Similarly, 4.1% of the ward's population have undertaken an apprenticeship.

No qualifications	No academic or professional qualifications.
Level 1	any GCSEs at other grades, O levels or CSEs (any grades), Foundation Welsh Baccalaureate, one Advanced Subsidiary (AS) level, NVQ (National Vocational Qualification) level 1, Basic or Essential Skills, skills for life, literacy and numeracy, Level 2 Scottish Vocational qualifications
Level 2	five or more GCSEs (A* to C or 9 to 4), O levels (passes), CSEs (grade 1), Intermediate Welsh Baccalaureate, one A level, two to three AS levels, NVQ level 2, Business and Technology Education Council (BTEC) General, City and Guilds Craft, Level 2 Scottish Vocational qualifications
Apprenticeship	Has completed any form of apprenticeship, at any level.
Level 3	two or more A levels, four or more AS levels, Advanced Welsh Baccalaureate, NVQ level 3, City and Guilds Advanced Craft, Ordinary National Certificate (ONC), Ordinary National Diploma (OND), BTEC National, International Baccalaureate, Level 3 Scottish Vocational qualifications
Level 4 or above	degree, foundation degree, Doctor of Philosophy (PhD), Master's degrees, Higher National Diploma (HND) or Higher National Certificate (HNC), NVQ level 4 or above, professional qualifications (for example, teaching or nursing)
Other qualification	Any other qualifications, equivalent unknown



## Economic Activity

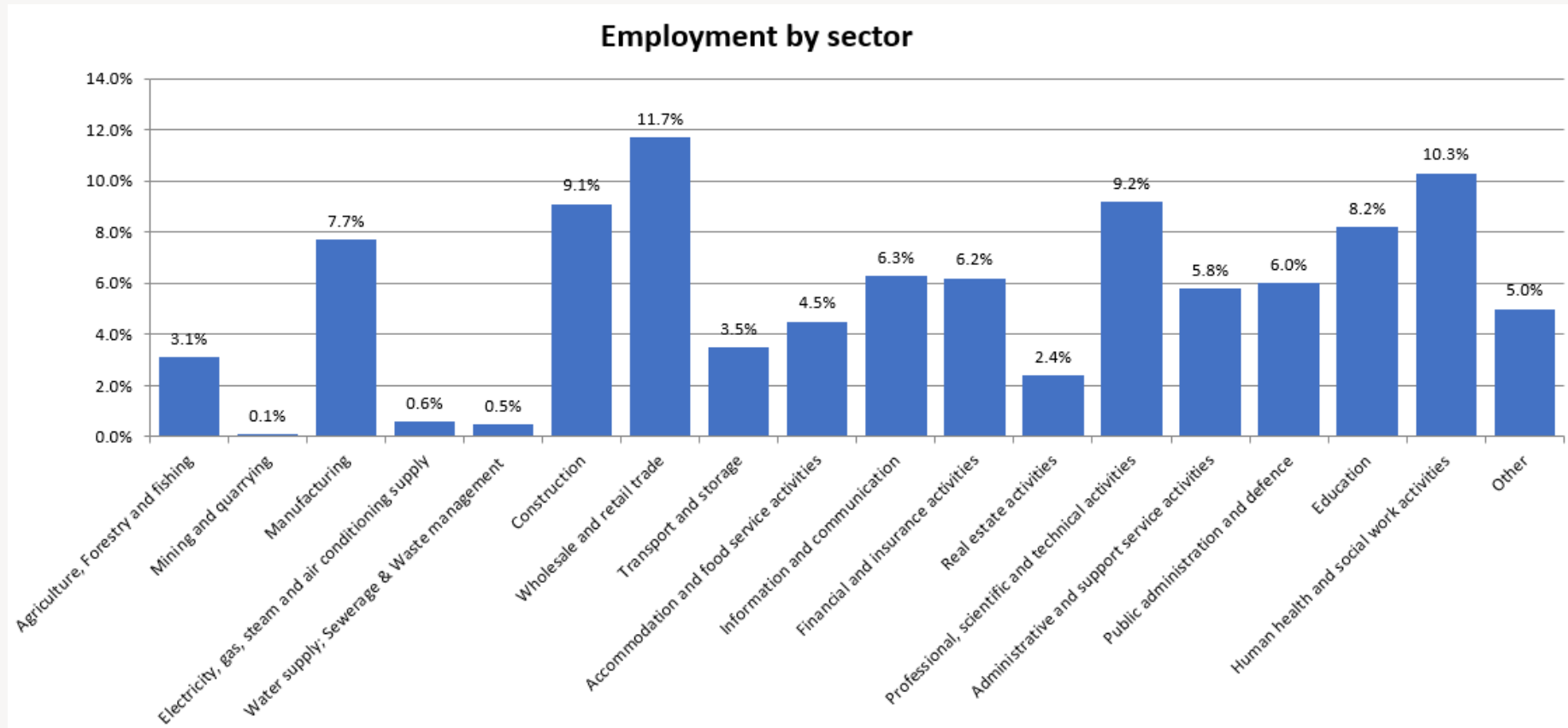
### Economic activity (count)



According to the 2021 Census, 60.0% of Bourne Valley's residents aged 16-74 are economically active, lower than Test Valley as a whole where the figure is 63.8% of residents. This includes people in full-, part- and self-employment, those who are actively seeking a job, and full-time students.

The remaining 39.3% of residents aged 16-74 are economically inactive, compared to 36.1% of Test Valley residents. This includes people who are retired, long-term sick or disabled, or who look after the home and family.

## Employment by sector



This graph shows the different industries residents of Bourne Valley ward work in, according to the 2021 Census. The largest sector employing people in Bourne Valley is Wholesale and retail trade (11.7%) followed by Human health and social work activities (10.3%) and then by Professional, scientific and technical activities (9.2%).

# Properties

Total number of properties

# 1,346

## Dwellings



**10.0%**  
*Terraced*



**32.8%**  
*Semi-Detached*



**50.4%**  
*Detached*

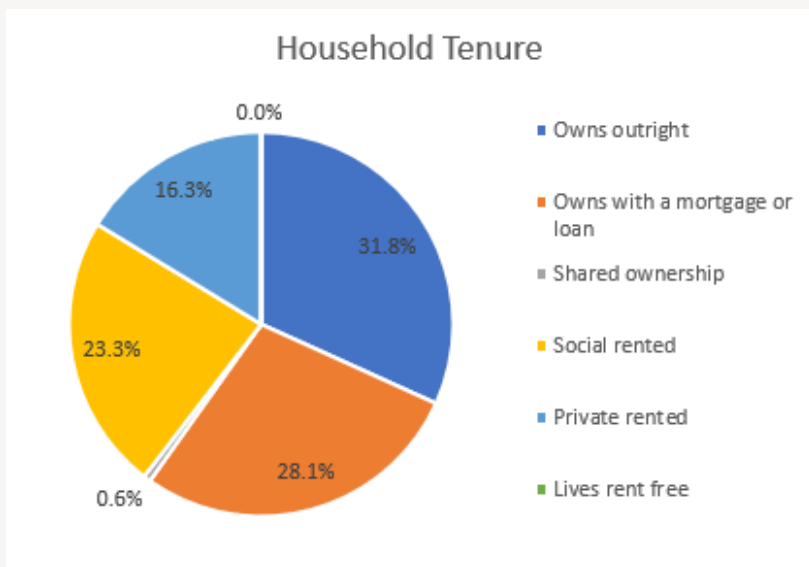


**3.9%**  
*Flat*



**2.9%**  
*Mobile or other*

## Household Tenure



Household tenure refers to the financial arrangements under which people occupy their homes and is taken from the 2021 Census.

This pie chart depicts the tenure of households in Bourne Valley. 59.9% of people in Bourne Valley live in a property which they own outright or with a mortgage or loan. This is lower than both the average for Test Valley, which is 69.0%, and the average for England, which is 61.3%.

23.3% of residents rent their property from a Housing Association, which is higher than the borough average of 14.3% as well as the English average of 17.1% 16.3% of residents privately rent their property; this figure is higher than the borough average of 14.8% but lower than the figure for England of 20.5%.

0.6% of households are part of a shared ownership scheme whilst 0.0% live rent free.

# Community Facilities

As a largely rural ward on the edge of Andover, Bourne Valley contains a good number of facilities, spread across the villages that it's made up of. These include primary schools in Smannell, Hurstbourne Tarrant and Vernham Dean and village halls in villages like Wildhern, Hurstbourne Tarrant, Enham Alamein and Vernham Dean.

For the villages across Bourne Valley, Andover is the closest location of most other facilities, like larger shops, secondary schools and GP surgeries. The closest railway stations is located in Andover or Great Bedwyn.



## Further Information

The Community Team at Test Valley Borough Council provide support to local councillors and communities. They are also able to signpost local organisations to grant funding and other resources that may be available. To contact them, please email:

[communityteam@testvalley.gov.uk](mailto:communityteam@testvalley.gov.uk)

The information in this profile has been prepared by Test Valley Borough Council's Policy Team. If you have any further queries or would like to talk to us about other information you would like to see, then please contact one of the Policy Team who will be happy to help:

[policyteam@testvalley.gov.uk](mailto:policyteam@testvalley.gov.uk)