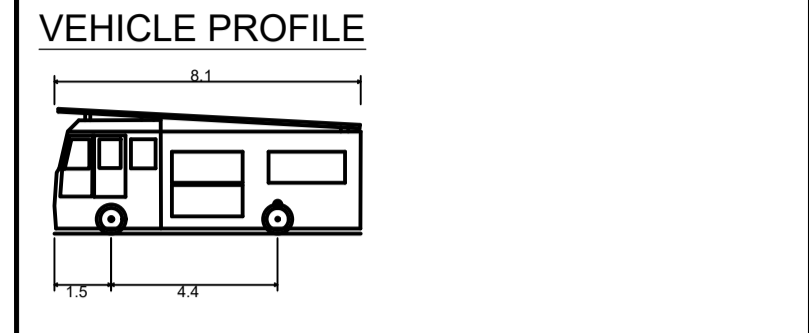


- NOTES**
- DO NOT SCALE FROM THIS DRAWING
 - ALL DIMENSIONS IN METRES UNLESS OTHERWISE STATED
 - FORWARD MOVEMENTS TRACKED AT A SPEED OF 10mph IN ACCORDANCE WITH HCC TECHNICAL GUIDANCE NOTE TG2



Hampshire Fire Appliance
 Overall Length 8.100m
 Overall Width 2.550m
 Overall Body Height 3.300m
 Min Body Ground Clearance 0.140m
 Max Track Width 2.400m
 Lock to lock time 6.00s
 Kerb to Kerb Turning Radius 7.750m

- VEHICLE TRACKING KEY**
- FORWARD MOVEMENT - EMERGENCY VEHICLE
 - REVERSE MOVEMENT - EMERGENCY VEHICLE
 - FORWARD MOVEMENT - ALEXANDER DENNIS 11.8m MMC ENVIRO 200 BUS

- KEY**
- PROPOSED KERB
 - PROPOSED WHITE COLOURED ROAD MARKING
 - PROPOSED YELLOW COLOURED ROAD MARKING
 - EXISTING RETAINED ROAD MARKING

© CROWN COPYRIGHT AND DATABASE RIGHTS 2026
 ORDNANCE SURVEY 100019180

SUIT	REV	PURPOSE OF ISSUE AND DESCRIPTION OF AMENDMENTS	DATE	DESIGNER	CAD	CHKD	APPD
S2	P01	FIT FOR INFORMATION	22.01.2026	JA/RH	RH	JS	gpc

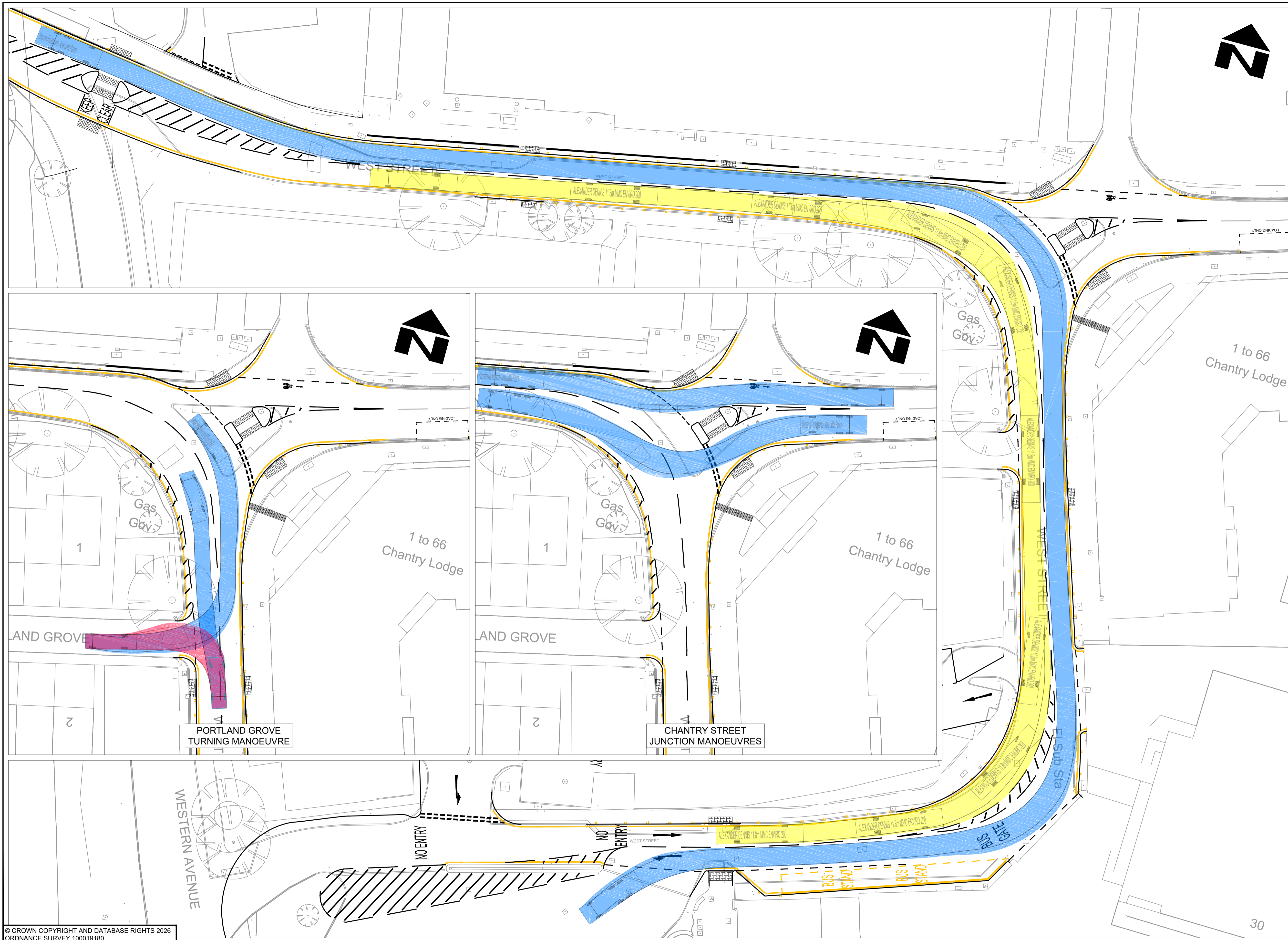
CLIENT
HAMPSHIRE COUNTY COUNCIL
 UNIVERSAL SERVICES DIRECTORATE
 TRANSPORT IMPLEMENTATION

CONSULTANT

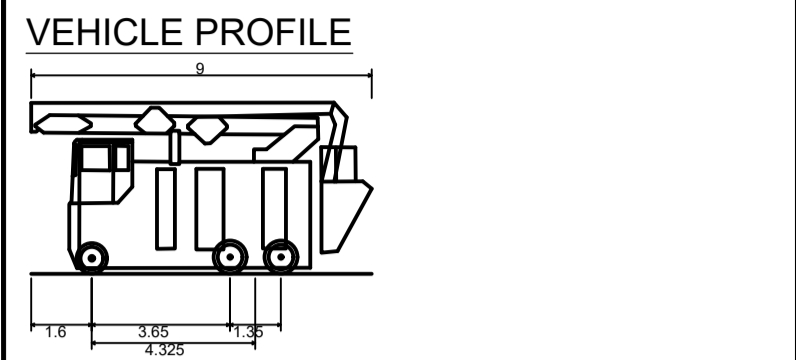
Hampshire County Council
 Engineering Services
 TIM LAWTON BEng CEng FICE FCHT - ASSISTANT DIRECTOR OF UNIVERSAL SERVICES

HORIZONTAL SCALE @ A1
 1:250
 VERTICAL SCALE @ A1
 N/A
 SHEET NUMBER
 1 OF 2
 SCHEME
ANDOVER - WESTERN AVENUE
 JOB No. R.J509237.01

DRAWING TITLE
WEST STREET (FIRE APPLIANCE) SWEPT PATH ANALYSIS
 HCC CAD PLOT: 22/1/2026 12:51:32
 STATUS OF DRAWING AT SUITABILITY: RED BACKGROUND = WORK IN PROGRESS, AMBER BACKGROUND = SHARED NON-CONTRACTUAL, GREEN BACKGROUND = EARLY PUBLISH & PUBLISHED CONTRACTUAL
 SUIT REV
S2 P01



- NOTES**
- DO NOT SCALE FROM THIS DRAWING
 - ALL DIMENSIONS IN METRES UNLESS OTHERWISE STATED
 - FORWARD MOVEMENTS TRACKED AT A SPEED OF 10mph IN ACCORDANCE WITH HCC TECHNICAL GUIDANCE NOTE TG2



Hampshire Fire Appliance - Aerial Ladder Platform
 Overall Length 9.000m
 Overall Width 2.550m
 Overall Body Height 4.523m
 Min Body Ground Clearance 0.153m
 Max Track Width 2.500m
 Lock to lock time 6.00s
 Kerb to Kerb Turning Radius 7.600m

- VEHICLE TRACKING KEY**
- FORWARD MOVEMENT - EMERGENCY VEHICLE
 - REVERSE MOVEMENT - EMERGENCY VEHICLE
 - FORWARD MOVEMENT - ALEXANDER DENNIS 11.8m MMC ENVIRO 200 BUS

- KEY**
- PROPOSED KERB
 - PROPOSED WHITE COLOURED ROAD MARKING
 - PROPOSED YELLOW COLOURED ROAD MARKING
 - EXISTING RETAINED ROAD MARKING

© CROWN COPYRIGHT AND DATABASE RIGHTS 2026
 ORDNANCE SURVEY 100019180

SUIT	REV	PURPOSE OF ISSUE AND DESCRIPTION OF AMENDMENTS	DATE	DESIGNER	CAD	CHKD	APPD
S2	P01	FIT FOR INFORMATION	22.01.2026	JA/RH	RH	JS	gpc

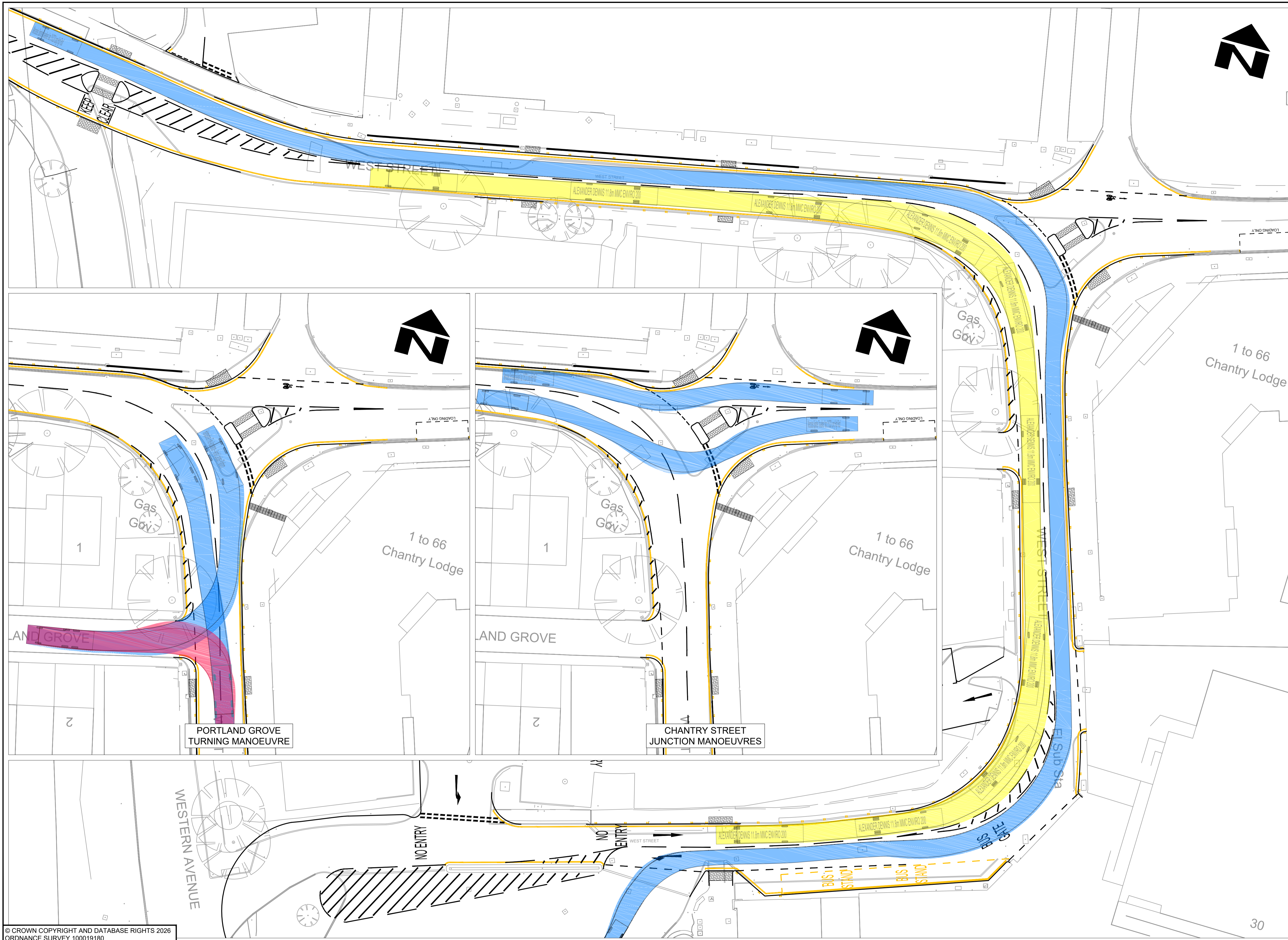
CLIENT
HAMPSHIRE COUNTY COUNCIL
 UNIVERSAL SERVICES DIRECTORATE
 TRANSPORT IMPLEMENTATION

CONSULTANT

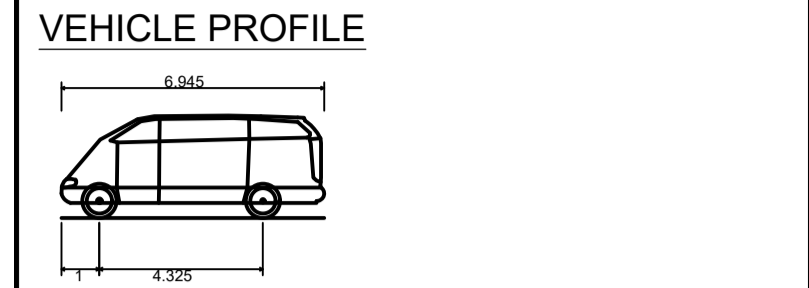
Hampshire County Council
 Engineering Services
 TIM LAWTON BEng CEng FICE FCHT - ASSISTANT DIRECTOR OF UNIVERSAL SERVICES

HORIZONTAL SCALE @ A1
 1:250
 VERTICAL SCALE @ A1
 N/A
 SHEET NUMBER
 2 OF 2
 SCHEME
ANDOVER - WESTERN AVENUE
 JOB No. R.J509237.01

DRAWING TITLE
WEST STREET (FIRE APPLIANCE) SWEEP PATH ANALYSIS
 HCC CAD PLOT: 221/2026 12:52:57
 STATUS OF DRAWING AT SUITABILITY: RED BACKGROUND = WORK IN PROGRESS, AMBER BACKGROUND = SHARED NON-CONTRACTUAL, GREEN BACKGROUND = EARLY PUBLISH & PUBLISHED CONTRACTUAL
 R.J509237-HEH-HGN-40012558-DR-CH-1025
 SUIT REV P01



- NOTES**
- DO NOT SCALE FROM THIS DRAWING
 - ALL DIMENSIONS IN METRES UNLESS OTHERWISE STATED
 - FORWARD MOVEMENTS TRACKED AT A SPEED OF 10mph IN ACCORDANCE WITH HCC TECHNICAL GUIDANCE NOTE TG2



Mercedes Sprinter Traveliner Van 315CDI Long High Roof
 Overall Length 6.945m
 Overall Width 1.993m
 Overall Body Height 2.715m
 Min Body Ground Clearance 0.400m
 Track Width 1.993m
 Lock to lock time 5.00s
 Wall to Wall Turning Radius 7.800m

- VEHICLE TRACKING KEY**
- FORWARD MOVEMENT - EMERGENCY VEHICLE
 - REVERSE MOVEMENT - EMERGENCY VEHICLE
 - FORWARD MOVEMENT - ALEXANDER DENNIS 11.8m MMC ENVIRO 200 BUS

- KEY**
- PROPOSED KERB
 - PROPOSED WHITE COLOURED ROAD MARKING
 - PROPOSED YELLOW COLOURED ROAD MARKING
 - EXISTING RETAINED ROAD MARKING

© CROWN COPYRIGHT AND DATABASE RIGHTS 2026
 ORDNANCE SURVEY 100019180

SUIT	REV	PURPOSE OF ISSUE AND DESCRIPTION OF AMENDMENTS	DATE	DESIGNER	CAD	CHKD	APPD
S2	P01	FIT FOR INFORMATION	22.01.2026	JA/RH	RH	05	gpc

CLIENT
HAMPSHIRE COUNTY COUNCIL
 UNIVERSAL SERVICES DIRECTORATE
 TRANSPORT IMPLEMENTATION

CONSULTANT

Hampshire County Council
 Engineering Services
 TIM LAWTON BEng CEng FICE FCHT - ASSISTANT DIRECTOR OF UNIVERSAL SERVICES

HORIZONTAL SCALE @ A1
 1:250
 VERTICAL SCALE @ A1
 N/A
 SHEET NUMBER
 1 OF 1
 SCHEME
ANDOVER - WESTERN AVENUE
 JOB No. R.J509237.01

DRAWING TITLE
WEST STREET (AMBULANCE) SWEPT PATH ANALYSIS
 HCC CAD PLOT: 22/1/2026 12:54:04
 STATUS OF DRAWING AT SUITABILITY: RED BACKGROUND = WORK IN PROGRESS, AMBER BACKGROUND = SHARED NON-CONTRACTUAL, GREEN BACKGROUND = EARLY PUBLISH & PUBLISHED CONTRACTUAL
 SUIT REV
S2 P01