

FOR CONTINUATION SEE DRAWING CJ009625-HEH-HGN-40012558-DR-CH-1015

NO ENTRY

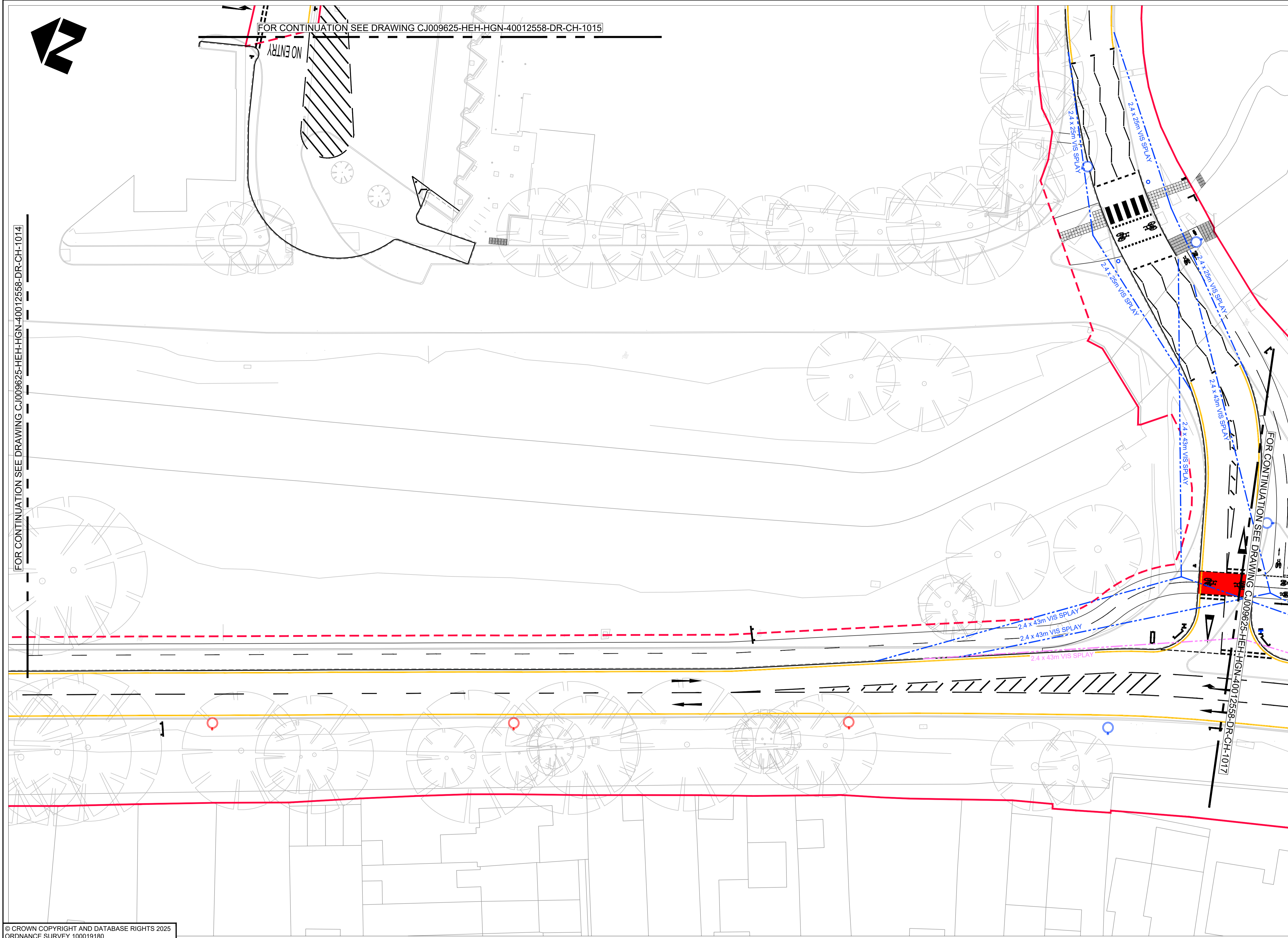
FOR CONTINUATION SEE DRAWING CJ009625-HEH-HGN-40012558-DR-CH-1014

NOTES

- DO NOT SCALE FROM THIS DRAWING
- ALL DIMENSIONS IN METRES UNLESS OTHERWISE STATED
- X AND Y DISTANCES IN ACCORDANCE WITH AND HCC TG3
- DUE TO THE SIGNIFICANT CHANGES IN HIGHWAY LAYOUTS, VISIBILITY SPLAYS/ENVELOPES ARE BASED UPON PROPOSED SPEED LIMITS :
WESTERN AVENUE = 30mph
WEST STREET = 20mph
WATERLOO COURT = 20mph
- REFER TO CJ009625-HEH-HGN-40012558-DR-CH-1018 FOR WEST STREET FORWARD VISIBILITY AROUND BENDS

KEY

- VEHICLE VISIBILITY SPLAY AT JUNCTIONS
- CYCLE VISIBILITY SPLAY AT CROSSINGS
- PEDESTRIAN VISIBILITY SPLAY AT CROSSINGS
- TRAFFIC SIGNAL STOPPING SIGHT DISTANCE
- VEHICLE FORWARD VISIBILITY
- EXISTING HIGHWAY BOUNDARY
- PROPOSED HIGHWAY BOUNDARY AMENDMENTS



© CROWN COPYRIGHT AND DATABASE RIGHTS 2025
ORDNANCE SURVEY 100019180

| SUIT | REV | PURPOSE OF ISSUE AND DESCRIPTION OF AMENDMENTS | DATE | DESIGNER | CAD | CHKD | APPD |
|------|-----|--|------------|----------|-----|------|------|
| S2 | P02 | MINOR AMENDMENTS | 01.05.2025 | RH | RH | JS | JCP |
| S2 | P01 | FIT FOR INFORMATION | 20.02.2025 | RH | RH | JS | JCP |

CLIENT
HAMPSHIRE COUNTY COUNCIL
UNIVERSAL SERVICES DIRECTORATE
TRANSPORT IMPLEMENTATION

CONSULTANT

Hampshire
County Council
Engineering Services

TIM LAWTON BEng CEng FICE FCHT - ASSISTANT DIRECTOR OF UNIVERSAL SERVICES

HORIZONTAL SCALE @ A1
1:250
VERTICAL SCALE @ A1
N/A
SHEET NUMBER
3 OF 4

SCHEME
ANDOVER - WESTERN AVENUE

JOB No. C.J009625.01

DRAWING TITLE
VISIBILITY SPLAYS AND STOPPING SIGHT DISTANCES

STATUS OF DRAWING AT SUITABILITY: RED BACKGROUND = WORK IN PROGRESS, AMBER BACKGROUND = SHARED NON-CONTRACTUAL, GREEN BACKGROUND = EARLY PUBLISH & PUBLISHED CONTRACTUAL

SUIT REV
S2 P02