



Augusta Park (East Anton)

Housing Occupations

Latest figures obtained from the developers' sales offices showed that as of end June 2011, a total of 427 homes were occupied at Augusta Park.

Affordable Housing

Latest figures from Sentinel Housing Association showed that as of end June 2011, a total of 210 affordable homes were either occupied or waiting to be allocated to tenants.



Community



Temporary Community Centre

Opening Saturday 6th August

As residents of Augusta Park you are invited to the much awaited opening of the Temporary Community Centre which is situated on East Anton Farm Road (at the corner of Sunflower Way). Pop along between 10am - 12 noon to see the Centre and meet neighbours. Refreshments will be served. The Centre will be open at various times each week for information about the area, groups, activities, signposting of local services and an opportunity for residents to get together. For details please contact Sharon Goodridge.



Community Respect and Environment Week

The next CREW will take place in the **King Arthurs Way area**, including Anton Nature Reserve, from **Monday 1st August** for a week.

Test Valley Borough Council, Hampshire Police, Testway Housing and a range of other agencies will work in partnership in this area to work with the community to reduce anti-social behaviour and crime and to undertake activities to improve and enhance the environment. There will be a wide variety of activities taking place including activities with the Neighbourhood Wardens, graffiti removal and sprucing up of public places to make the neighbourhood sparkle and encourage community cohesion.

As part of the week, a Family Day is being held on Thursday 4th August 11am-3pm at King Arthurs Hall. Residents will be able to access a wide range of information and activities on the day.

Diary Dates

Date	Event	Venue
Thursdays: 28th July 1st, 15th 29th September	Health Walks All welcome for an hour long walk to help fitness and meet new people. Please wear suitable footwear and bring a waterproof coat (if necessary) and a drink.	Leaving from outside the temporary Community Centre, corner of East Anton Farm Road and Sunflower Way 10am - 11am
Thursday 28th to Saturday 30th July	Smannell Road Fun Fair	Smannell Road open space
Monday 1st to Friday 5th August	Community Respect and Environment Week (CREW)	King Arthur's Way and Anton Nature Reserve

Friday 5th August	Pinocchio in the Park Information available at: www.andovervision.co.uk	Beech Hurst Park 6pm Free event
Saturday 13th August	Picnic in the Park - an open air music and arts festival Live music acoustic stage, lots of creative workshops, street theatre, community market, food units and licensed bar. Information available at: www.andovervision.co.uk	Beech Hurst Park 12 - 7pm Free event
Thursday 25th August	Family Fun Green Day at Augusta Park Activities, crafts and games	Open space at Hedgerow Walk, Augusta Park 3 - 6pm Free event
Sunday 18th September	Harvest Festival Information available at: www.andovervision.co.uk	Andover High Street 10am - 2pm Free event
1st Monday in the month Due to Children Centre cleaning the next session will be Monday 3rd October.	East Anton Parent and Toddler Group Parents, babies and toddlers welcome	Spring Meadow Children's Centre, Smannell Road 1.30 - 2.30pm £1 per session



Community Travel

East Anton Subsidised Bus Pass Scheme

New residents are reminded that subsidised bus passes are available for new households. An application form and details about the scheme can be found on the Council's website via the following link <http://www.testvalley.gov.uk/default.aspx?page=10127> or from Sharon Goodridge. Once completed the forms need to be taken to Beech Hurst offices with a cheque or debit card payment of £10 (unfortunately cash payments cannot be accepted). One pass is available per household and the £10 fee is payable per quarter. 75 bus passes have been issued to date which includes 33 renewals.

Stagecoach buses are able to offer residents of Augusta Park a further 10% discount on bus passes once their yearly subsidised bus pass scheme has expired, followed by a 5% discount for the second year. Details explaining how residents can take up this offer will be provided when they apply for their last quarterly bus pass.

Cycle vouchers

New homeowners are reminded that they are eligible for a £50 cycle voucher to spend on cycling accessories at Halfords (one voucher available per home). To date 57 vouchers have been issued to homeowners by the developers.

Education

Endeavour School will welcome a new cohort of children to their reception class in September. The permanent school building is still on track and due to open in January 2012.

Recreation & Open Space

A competition is being held to name the public open spaces within the northern part of the development - for details please see the poster at the end of this newsletter. Ideas should be submitted to Sharon or dropped into the Temporary Community Centre by 1st October.

Transport

Some cycle and traffic counters were installed at Augusta Park earlier this month on Smannell Road and at the entrance to the site from Icknield Way. The counters will record numbers using the routes and figures will be available on a monthly basis.

Discussions have been taking place with the local bus operator Stagecoach to explore the expansion of the STAR 1 bus service further into the site. This extension to the service is likely to correspond with the opening of the controlled bus arch, linking Cricketers Way and River Way. Works to the arch are due to start towards the end of the year, which will improve access for both pedestrians and cyclists also. Residents will be advised of the expected start date nearer the time.

Information for residents

Newsletters

Residents are reminded that they can view the monthly newsletters and access local information on the New Neighbourhoods page of the Council's website via the following link: www.testvalley.gov.uk/default.aspx?page=8801



(or via the Housing, Health & Community Service homepage). A limited supply of newsletters will also be kept at the Temporary Community Centre.

Resident Survey

During the autumn, all residents will be asked to complete a survey about the new neighbourhood to provide local feedback. Please return a survey so that we are able to understand and act on residents' views.

Community Notice Board

A notice board displaying local information has been installed near the children's play park at Hedgerow Walk. Please walk by to find out what is going on locally in the neighbourhood.

Maternity Leave

Sarah Tose, Senior Planning Officer (Implementation), will be on maternity leave from 15th August. In Sarah's absence, please contact the Planning Policy team on 01794 527816 with any planning queries regarding the New Neighbourhoods. Please continue to contact Sharon for local information and queries about community development issues.



Picket Twenty

The first homes have now been occupied at Picket Twenty. The development will deliver 1200 new homes overall.

By the time that 50 homes are occupied, a Community Worker will be in post and a temporary community centre will be located at the site.

The new roundabout off the A3093 has been completed and is now open. Construction works are continuing on the new housing and access roads.



For more information please contact:

the Planning Policy team on 01794 527816 / planningpolicy@testvalley.gov.uk or Sharon Goodridge (East Anton Community Development Worker) on 01264 368622 / sgoodridge@testvalley.gov.uk



Augusta Park - Open Space Areas

Test Valley Borough Council would like to officially name the open space areas and community parkland on the Augusta Park housing development.

These are:

- The central open space area to the north of Smannell Road (1)
- The Neighbourhood Park area, north of the local centre (2)
- The Community Playing Fields and Pavilion (3)

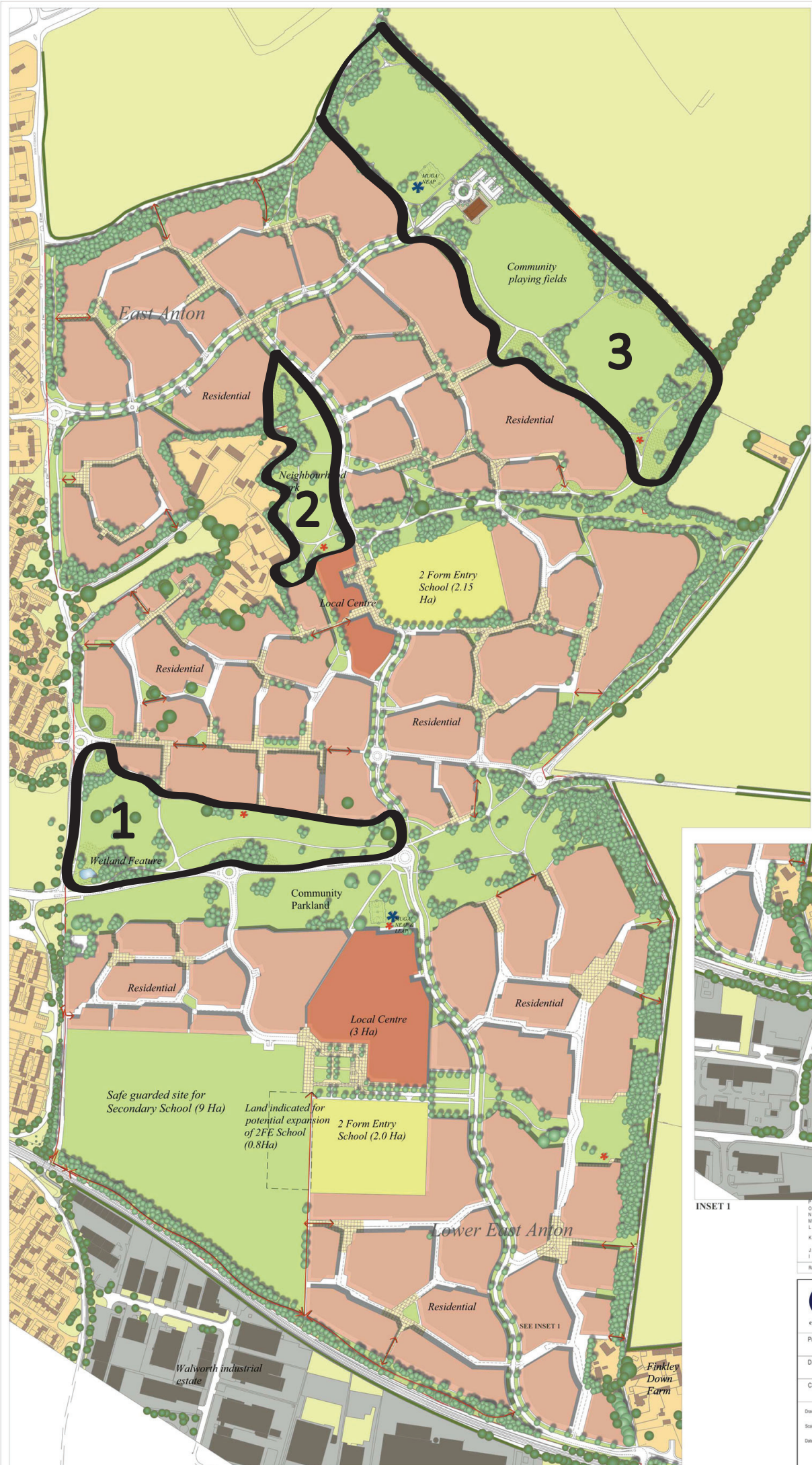
As local residents, your suggestions would be very much appreciated to help us decide on suitable names for these areas.

Ideas so far include a Roman theme or agricultural theme to complement road names. The TVBC leisure portfolio holder and local members will choose the most appropriate name.

Please email your suggestions to: sgoodridge@testvalley.gov.uk or text me on 07990 755104. Alternatively drop your ideas into the Temporary Community Centre on East Anton Farm Road or post to: Sharon Goodridge (Community Development Worker) TVBC, Beech Hurst Offices, Weyhill Road, Andover, SP10 3AJ by **October 1st 2011**

Remember to include your name and contact details

Thank you for your time - Sharon Goodridge



LEGEND

Existing:

- Trees
- Hedgerows
- Arable land
- Residential areas

Proposed:

- Structural planting
- Open space
- Balancing ponds
- Employment
- Local centres
- Secondary School Site
- 2 Form Entry School sites
- Residential
- Shared vehicular/pedestrian space
- Locally Equipped Areas for Play
- Neighbourhood Equipped Area for Play
- Pedestrian only links

LANDUSE BUDGET

Gross site area	136.56 Ha
Employment area	3.86 Ha
2 Form entry school (North)	2.15 Ha
2 Form entry school (South)	2.00 Ha
Secondary school	9.00 Ha
Local centres	4.00 Ha
Net residential	73.10 Ha
Playing fields	8.25 Ha
(Not including 1.92 structural planting along the northern boundary - Pol And 01.2A)	
Existing community farm site	2.69 Ha
Parkland, structural landscape, infrastructure & other land	31.51 Ha
Total	136.56 Ha

FOR ILLUSTRATIVE PURPOSES ONLY



INSET 1

Revision	Date	By	Description
P	Dec '06	CA	Route of cycleway through central Parkland updated
D	Dec '06	CA	Amended to reflect changes to highway layout
N	Oct '06	CA	Amended to residential boundary
M	Sep '06	CA	Vegetation updated
L	Sep '06	CA	Amended to include 20m buffer to southern boundary of Secondary School
K	Aug '06	CA	Masterplan layout of Spenhall Road updated to reflect new location for secondary school / local centre
J	May '06	SG/CA	General update & all station omitted
I	May '06	SG/CA	Boundary planting increased

CSa
environmental planning

Head Office
Barra A. Dimes
High Street, Ashwell
Tel: 01462 743647
Fax: 01462 743648
E-mail: ashwell@csaenvironmental.co.uk

Project: **LAND EAST OF ANDOVER**

Drawing Title: **MASTERPLAN FOR 2,500 UNITS**

Client: **Taylor Woodrow Developments Ltd, George Wimpey UK Ltd**

Drawing Number: **CSA/180/147** Revision: **P**

Scale @ Size: **1:2,500 @ A1** Drawn: **NP**

Date: **March 2004** Checked: **CS**