



## East Anton (Augusta Park)

### **Housing Occupations**

Latest figures obtained from the developer showed that as of end January 2011, a total of 345 homes were occupied at Augusta Park. This figure includes affordable homes and Ministry of Defence personnel properties.

### **Affordable Housing**

Latest figures from Sentinel Housing Association showed that as of January 2011, a total of 171 affordable homes were either occupied or waiting to be allocated to tenants.



### **Community:** *Neighbourhood Watch*

Residents of Augusta Park were invited to a meeting on Wednesday 9th March at Endeavour School to find out about establishing Neighbourhood Watch Schemes on the development and to obtain advice on crime prevention. 17 residents came along to hear information from Rebecca Williams, PCSO for the area, regarding how Neighbourhood Watch Schemes work and what is involved. Melody Manning, Crime Prevention Officer, gave some good advice on how to keep property safe and secure and issued permanent marker pens, 'Burglar Beware Stickers' and purse leads as crime prevention measures.

**Any residents who would like to get involved with Neighbourhood Watch Schemes at Augusta Park please contact Rebecca Williams on 0845 0454545 ext 731135 / [rebecca.williams@hampshire.pnn.police.uk](mailto:rebecca.williams@hampshire.pnn.police.uk) or Sharon Goodridge on 01264 368622 / [sgoodridge@testvalley.gov.uk](mailto:sgoodridge@testvalley.gov.uk).**

“

## **Smannell Parish Council**

*(a message from the Chairman John Page)*

*Augusta Park is part of the civil parish of Smannell which includes the rural villages of Smannell, Woodhouse, Little London and Finkley. At the latest count we have a total of about 1500 parishioners. We are the layer of local government below TVBC and we receive all planning applications, including all the Augusta Park developments, for comment before the final decisions are made. Smannell Parish is within Test Valley's Alamein Ward and our Borough Councillors keep in close contact with the Parish Council. We will help to advise any parishioners who have problems and we work with the Borough and County Councils on parish matters including footpaths and the state of the roads.*

*There is a Parish Council meeting every month. At present all meetings are held in Smannell village school, normally on the first Monday of each month at 7:15pm. We hope to use the new Augusta Park Community Centre when it is opened, so that it will be easier for Augusta Park residents to get involved.*

*The parish has grown in size because of our new Augusta Park parishioners, so we have applied for the number of parish councillors to be increased from 5 to 7. We hope that people from Augusta Park will get involved and stand as prospective councillors for the Parish Council at the elections in May - please note that applications need to be submitted by 4th April. Details can be obtained from the parish clerk - his email is [smannellpc@gmail.com](mailto:smannellpc@gmail.com).*

*We look forward to working with our new parishioners and to helping to organise events for our new community.*

”





## Easter at East Anton

On Monday 11th April from 10 - 11.30am at St Paul's Church Centre, Smannell Road there will be activities available for children aged 5 - 11 years, accompanied by parents. Please call Sharon Goodridge on 01264 368622 for details and to reserve a place.



## Health Walks

Health Walks are running alternate Thursday mornings - leaving from the temporary community centre on the corner of Sunflower Way and Pasture Walk at 10am for an hour long walk around the local area. Please wear suitable shoes/boots, a coat and bring a drink. Future dates for walks are March 17th and 31st, April 14th and 28th. All welcome. For details please contact Sharon Goodridge on 01264 368622 / [sgoodridge@testvalley.gov.uk](mailto:sgoodridge@testvalley.gov.uk).



## Parent and Toddler Group

East Anton Parent and Toddler Group runs on the first Monday in the month 1.30 - 2.30pm at Spring Meadow Children's Centre, Smannell Road. Parents and children under 4 are all welcome for craft, story and song time, £1 to cover costs. For details please contact Sharon.

## Education

Hampshire County Council has confirmed that there is no requirement for a secondary school on the East Anton development. The developer is therefore free to develop the land which was safeguarded for a secondary school for an alternative use (a new planning application will be required). Works are progressing well on the permanent building for Endeavour Primary School. There are currently 61 pupils on roll at the school.



## Recreation & Open Space

TVBC is still waiting for the commuted sums payments from the developer before the maintenance of the central open space can commence (including the provision of dog waste/litter bins).

### Dates for the Smannell Road

# FUNFAIR

(located on the open space to the west of Augusta Park) are:

- 6th - 8th May and
- 9th - 11th September.

## Transport

New residents are reminded that bus passes are available for new households. An application form and details about the scheme can be found on the Council's website via the following link:

<http://www.testvalley.gov.uk/default.aspx?page=10127>

or from Sharon Goodridge. Once completed the forms need to be taken to Beech Hurst offices with a cheque or debit card payment of £10 (unfortunately cash payments cannot be accepted). 1 pass is available per household and the £10 fee is payable per quarter.

Works to the Enham Arch roundabout commenced 28 February, which will include alterations to the road and installation of traffic signals on most of the roads leading onto the roundabout.





## Information for Residents

A **Frequently Asked Questions** page covering topics such as refuse, parking, layout/design and community facilities is now available to view on the New Neighbourhoods page of the Council's website (accessed via the Housing, Health and Community Service homepage).

Residents are reminded that they can view the monthly newsletters and access local information on the New Neighbourhoods section of the Council's website via the following link:

<http://www.testvalley.gov.uk/default.aspx?page=8801>

(or via the Housing, Health & Community Service homepage).

Contact details for local Borough Councillors can be found on the Council's website via the following link:

<http://www.testvalley.gov.uk/Default.aspx?page=156>.

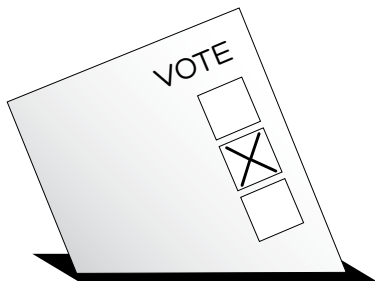
The local Members for Alamein Ward are:

Councillor Gates, Councillor North and Councillor Mrs Whiteley.

## Local Government Elections

– 5 May 2011

The polling station for Augusta Park will be at:



**St. Michael and All Angels Church Centre,**  
Smannell Road (also known as St Paul's).

Augusta Park is in Alamein Ward and Smannell Parish. Electors on the register at 1 April will be sent a poll card in the first week of April.

Anyone who is not on the register at 1 April has until 14 April to register so that they can vote on 5 May. Anyone who wants to vote by post has until 5pm on 14 April to apply. Postal votes will be sent out on 18 April and must be returned by 10pm on 5 May. There will be Borough and Parish Council elections as well as a referendum on the voting system used to elect MPs to the House of Commons. We will not know the final list of candidates who will be standing until 7 April. The list of candidates will be on the TVBC website from 8 April.



## Picket Twenty

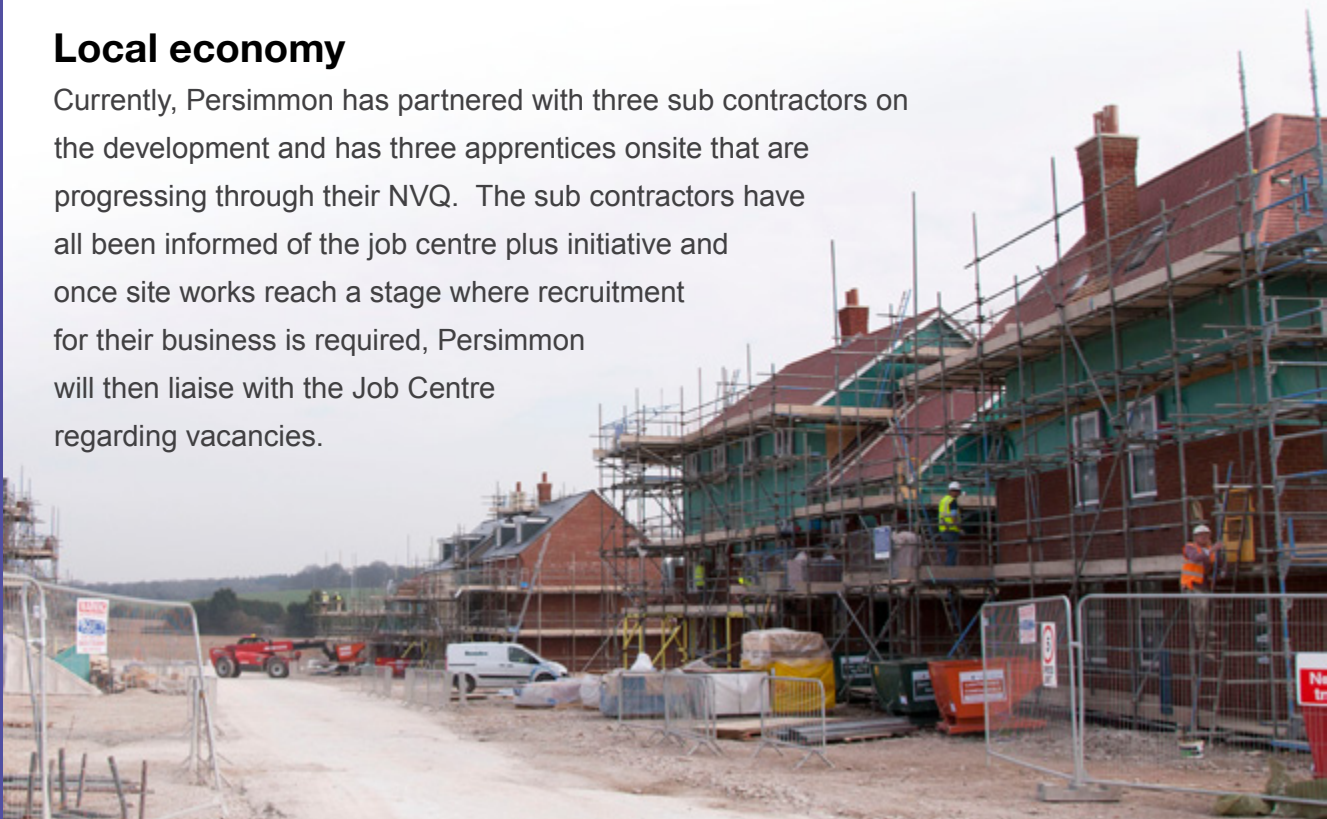
The development at Picket Twenty for 1200 new homes is progressing well. Construction works are continuing on the new roundabout, access road and housing.

### Affordable Housing

Picket Twenty will provide a range of affordable properties which will be delivered by Spectrum Housing Group, including one and two bedroom apartments, two, three and four bedroom houses for rent and three bedroom houses under Spectrum's shared ownership scheme.

### Local economy

Currently, Persimmon has partnered with three sub contractors on the development and has three apprentices onsite that are progressing through their NVQ. The sub contractors have all been informed of the job centre plus initiative and once site works reach a stage where recruitment for their business is required, Persimmon will then liaise with the Job Centre regarding vacancies.



## Transport

The new roundabout will form part of the Andover Ring Road Enhancement Project, a joint venture between TVBC and HCC which includes a number of initiatives such as improvements to traffic management and pedestrian/cycle movements, landscape improvements and biodiversity enhancements.

An underpass is to be provided under the A3093 at the Twinings Roundabout by the time that 25 homes are occupied, which will connect Picket Twenty with the town via London Road. The underpass will provide bus, pedestrian and cycle access. Artwork in the form of a mural is to be installed on the walls of the underpass. The lead artist from the Chapel Arts Studio in Andover will soon be undertaking an 'artist in residence' programme with children from a local school (yet to be confirmed) to come up with design ideas for the mural.



### For more information please contact:

**Sarah Tose** (*Planning Policy*)

on 01794 527812 / [stose@testvalley.gov.uk](mailto:stose@testvalley.gov.uk) or

**Sharon Goodridge**

(*East Anton Community Development Worker*)

on 01264 368622 / [sgoodridge@testvalley.gov.uk](mailto:sgoodridge@testvalley.gov.uk)