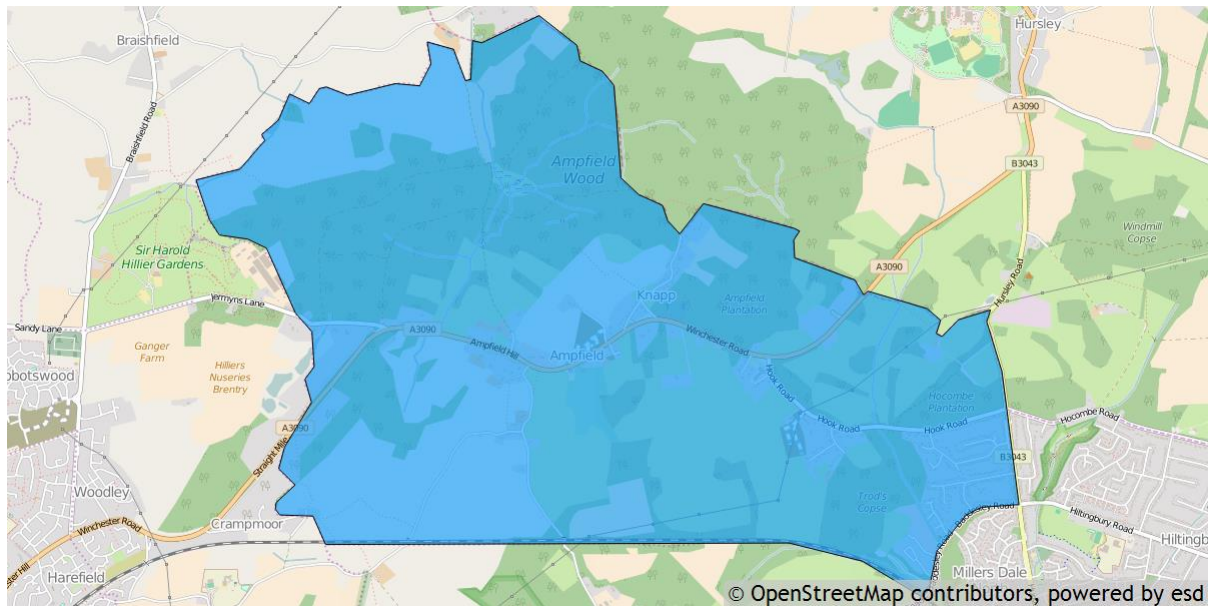


## Ampfield parish profile

This profile provides a summary of the latest available information on the demographic make-up of the Ampfield parish within Test Valley. It looks at information on topics such as the population structure, economic, housing, health and educational information for the parish.

Ampfield is one of the 59 parishes in Test Valley. It has an area of 995 hectares which represents 1.6% of the total area of Test Valley.



### Elected representatives

|   |   |
|---|---|
| <p><b>Hampshire County Councillor</b></p> <p><b>Cllr Alan Dowden</b><br/>Home: 02380 266458<br/>Email: <a href="mailto:alan.dowden@hants.gov.uk">alan.dowden@hants.gov.uk</a></p> | <p><b>Test Valley Borough Councillor</b></p> <p><b>Cllr Martin Hatley</b><br/>Home: 02380 254040<br/>Mobile: 07970 501050<br/>Email: <a href="mailto:cllrmhatley@testvalley.gov.uk">cllrmhatley@testvalley.gov.uk</a></p> |
| <p><b>Ampfield Parish Council Chairman</b></p> <p><b>Cllr Bryan Nanson</b><br/>Home: 02380 267760<br/>Email: <a href="mailto:bryan@ampfield.org.uk">bryan@ampfield.org.uk</a></p> | <p><b>Ampfield Parish Council Clerk</b></p> <p><b>Mrs Doreen Matthews</b><br/>Daytime: 01794 368437<br/>Email: <a href="mailto:clerk@ampfield.org.uk">clerk@ampfield.org.uk</a></p>                                       |

## Residents

The estimated 2016 population of Ampfield parish is 1,490. This is expected to rise by 2021 to 1,592 (an increase of 6.8%).

Ampfield's resident population is 50.9% female and 49.1% male.

**Young people (0-19)** currently make up 18.9% of Ampfield's population; this is expected to fall to 17.7% by 2021.

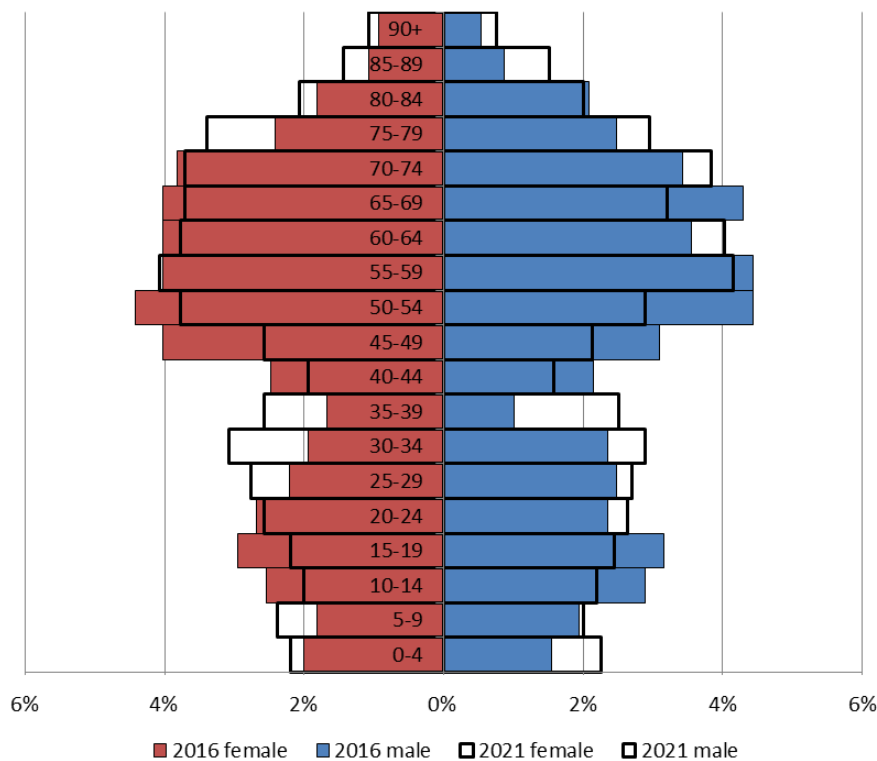
**Young adults (20-39)** currently make up 16.7% of the parish's population; this is expected to rise to 21.7% by 2021.

**Middle aged residents (40-64)** currently account for 36.6% of Ampfield's population; this is expected to fall to 30.9% by 2021.

Those **aged 65 and over** make up 27.8% of the parish's population; this is expected to rise to 29.6% by 2021.

Those **aged 85 and over** currently represent 3.4% of the population; this is expected to rise to 4.8% by 2021.

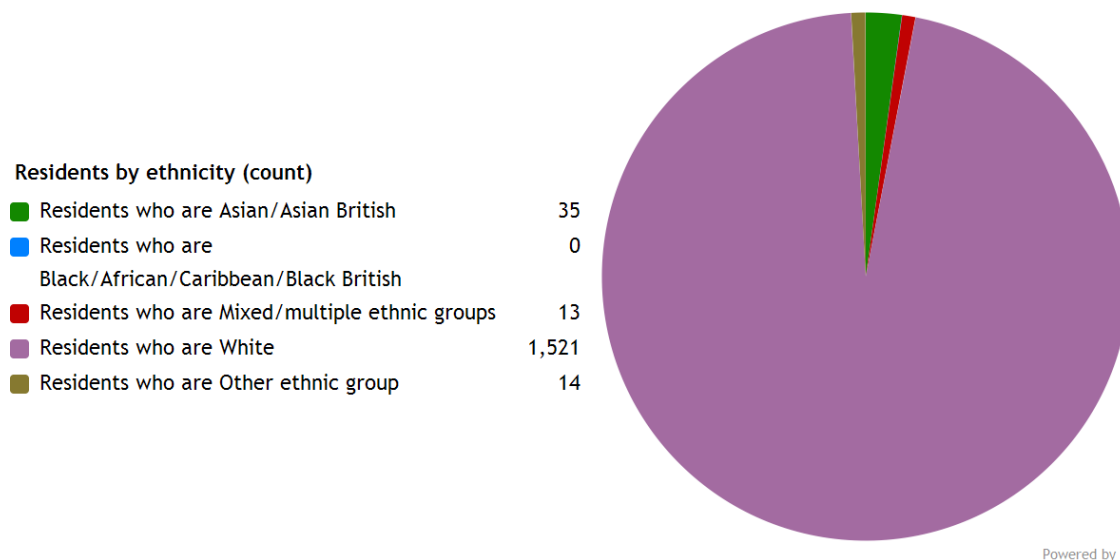
### Age of parish population



## Ethnicity

The largest ethnic group in Ampfield is “White” at 96.1% of the parish's population. That compares with a figure of 95.9% for Test Valley as a whole and 95.0% for Hampshire.

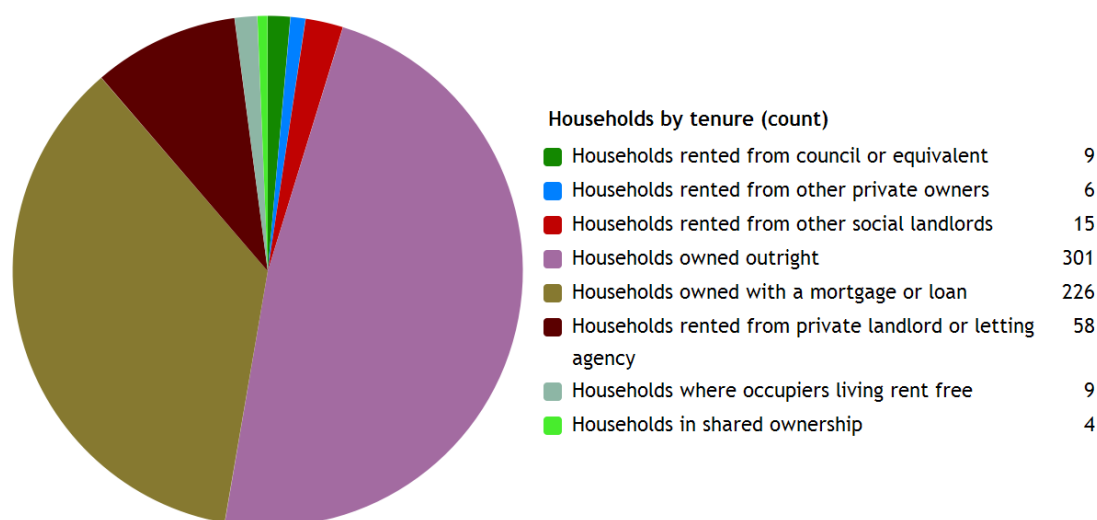
The second largest ethnic group (2.2%) is “Asian/Asian British”. That compares with 2.0% for Test Valley as a whole and 2.7% for Hampshire.



Powered by esd

## Households

Ampfield parish has **628 households**, which represent 1.3% of Test Valley's 47,626 households. The household split by tenure is shown below (tenure refers to the financial arrangements under which a home is occupied).

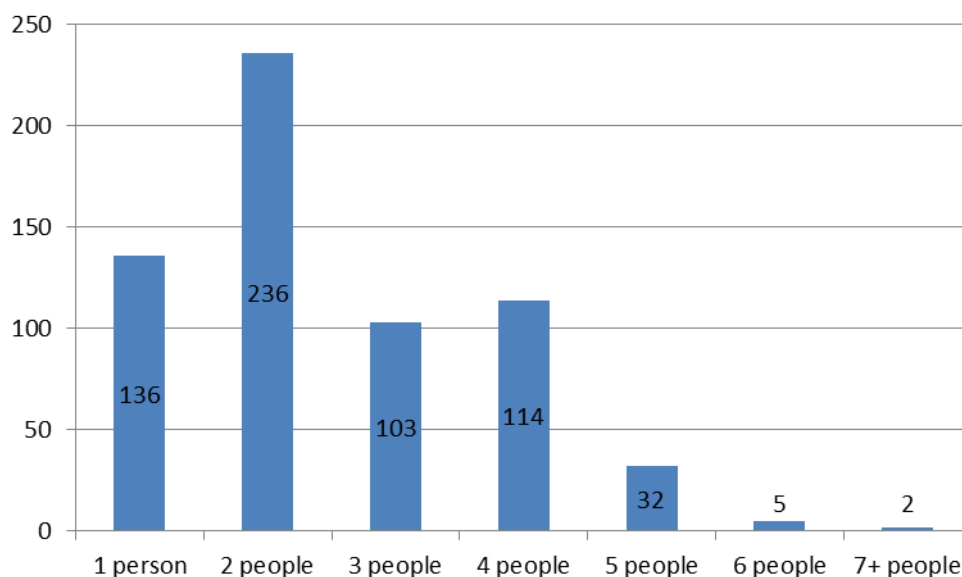


Powered by esd

The majority of properties (83.9%) are **owned by those who live in them**. This is higher than the Test Valley average of 70.4%.

10.2% of Ampfield households are **privately rented**, and 3.8% are **socially rented**. This compares to 12.9% and 14.4% respectively across Test Valley.

### Households by number of residents



37.6% of Ampfield's households are occupied by two people, and 21.7% by one person. 40.8% of the parish's households are occupied by more than two people.

Ampfield has 42 households with **dependent children aged 0 to 4**. That represents 6.7% of the parish's households.

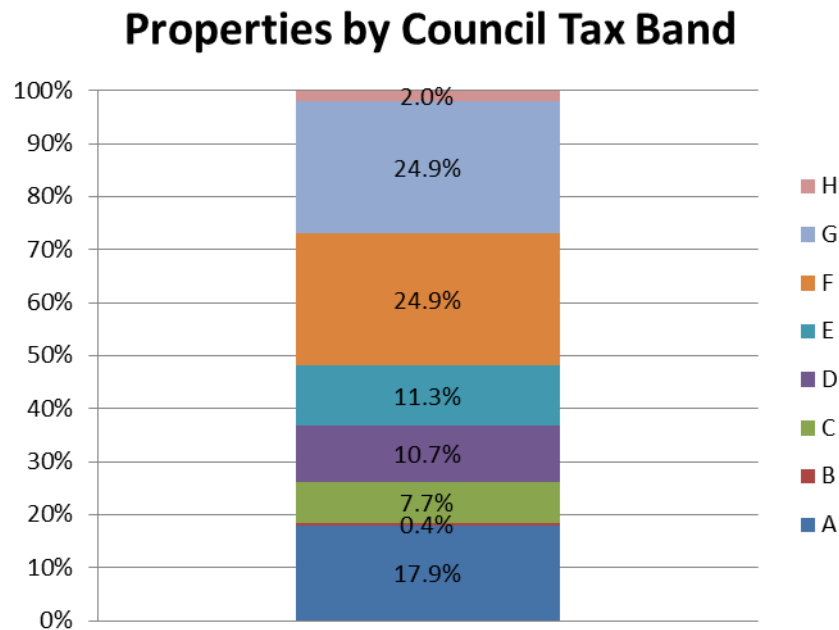
182 households in the parish have **dependent children of all ages**. That represents 29.0% of the parish's households.

### House prices

According to Zoopla, the average house price in Ampfield (as of March 2016) is **£864,152**. This has increased by 21.7% in the last five years.

It is estimated that **31.3% of households in south rural Test Valley cannot afford to buy a private property**. The central rural area includes the wards of Ampfield and Braishfield, Chilworth Nursling and Rownhams, North Baddesley, and Valley Park.

## Council Tax Bands



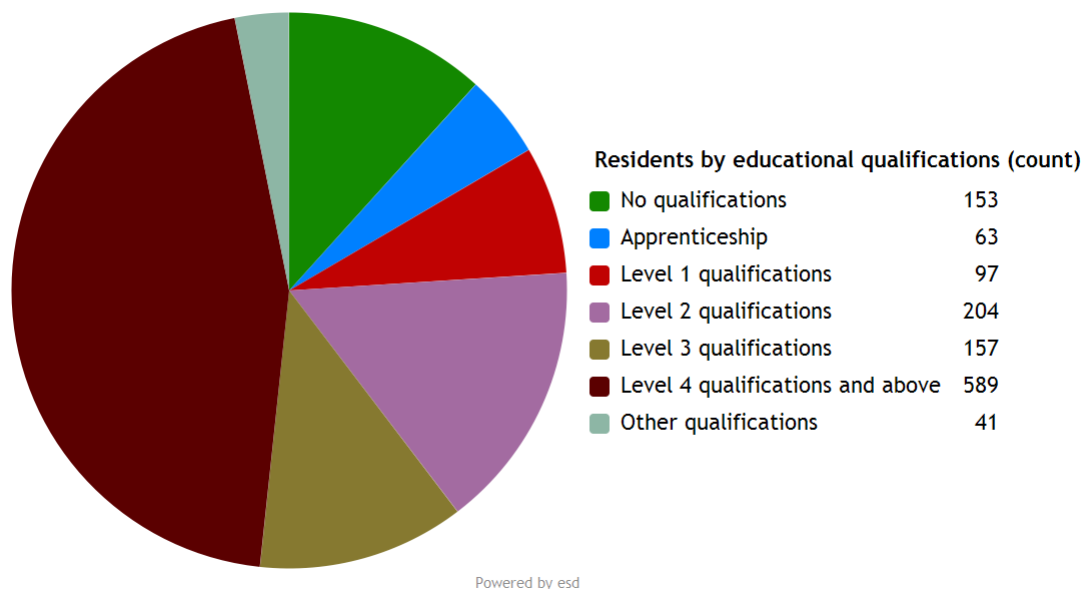
18.3% of Ampfield properties are at the **lower** end of the property market (Bands A and B). This compares to 22.2% for Test Valley as a whole.

29.7% of the parish's properties are in the **middle** range of the property market (Bands C to E). This compares to 60.8% across the whole borough.

51.8% of Ampfield's properties are at the **higher** end of the property market (Bands F to H). This compares to 17.1% of all Test Valley properties.

## Education

37.2% of Ampfield's residents have achieved **level 4 qualifications** and above compared to 30.5% in Test Valley as a whole. 9.7% of Ampfield's residents have **no qualifications** compared to 18.4% in Test Valley.



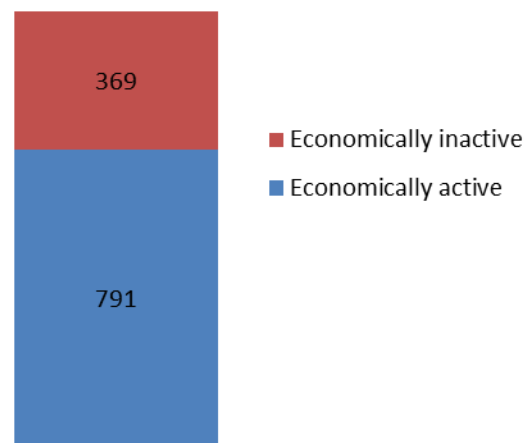
|                     |   |
|---------------------|---|
| No qualifications   | No academic or professional qualifications.   |
| Level 1             | 1+O level passes, 1+CSE/GCSE any grades, NVQ level 1, Basic/Essential skills, NVQ Level 1.  |
| Level 2             | 5+O level passes, 5+GCSEs (grades A*-C), 1 A level, 2-3 AS levels, City and Guilds Craft, NVQ level 2.                                    |
| Level 3             | 2+A levels, Higher School certificate, NVQ level 3, City and Guilds Advanced Craft, BTEC National.  |
| Level 4/5           | Degree (e.g. BA, BSc) higher degree (e.g. MA, PhD, PGCE), NVQ levels 4 and 5, qualified teacher, nurse or accountant status, BTEC Higher. |
| Other qualification | Level unknown, vocational/work-related qualifications, foreign qualifications.  |

## Employment

68.2% of Ampfield residents aged 16-74 are **economically active**, compared to 73.4% of Test Valley residents. This includes people in full, part and self-employment, those who are actively seeking a job, and full-time students.

The remaining 31.8% of residents aged 16-74 are **economically inactive**, compared to 26.6% of Test Valley residents. This includes people who are retired, long-term sick or disabled, or who look after the home and family.

## Economic activity (count)

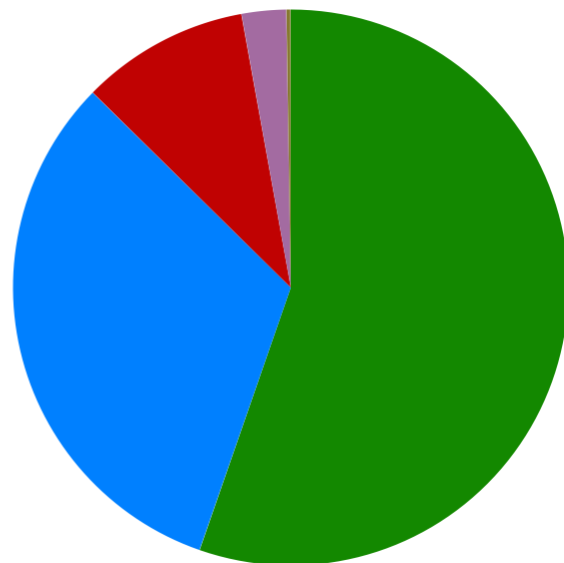


## Health

Ampfield has 41 (2.6%) residents that report being in **bad health** and 4 (0.3%) residents that report being in very **bad health**.

### Residents by level of health (count)

|                  |     |
|------------------|-----|
| Very good health | 876 |
| Good health      | 507 |
| Fair health      | 155 |
| Bad health       | 41  |
| Very bad health  | 4   |



Powered by esd

## Community plans

Details of any community planning exercises your parish is undertaking can be added here. Please get in touch with the Policy Team at the email address below and we will be more than happy to add information at your request.

## Local facilities

|                                |   |
|--------------------------------|---|
| <b>Food stores</b>             | None  |
| <b>Other shops</b>             | None  |
| <b>Primary schools</b>         | Ampfield Church of England Primary School                                     |
| <b>Secondary schools</b>       | None  |
| <b>Health facilities</b>       | None  |
| <b>Leisure facilities</b>      | Cricket pitch<br>Football pitch<br>Children's play area<br>Ampfield Golf Club |
| <b>Public houses</b>           | The Potters Heron<br>The White Horse  |
| <b>Community facilities</b>    | Ampfield Village Hall   |
| <b>Churches</b>                | St Mark's Church  |
| <b>Local recycling centres</b> | Village Hall<br>The Potters Heron<br>The White Horse                          |



## Public and community transport

### Salisbury Reds 35 bus service

A bus service between Romsey and Braishfield stopping at villages in Southern Test Valley, including Ampfield.

More information can be found here:

<http://bit.ly/2dULF3L>

### Romsey Dial-a-Ride

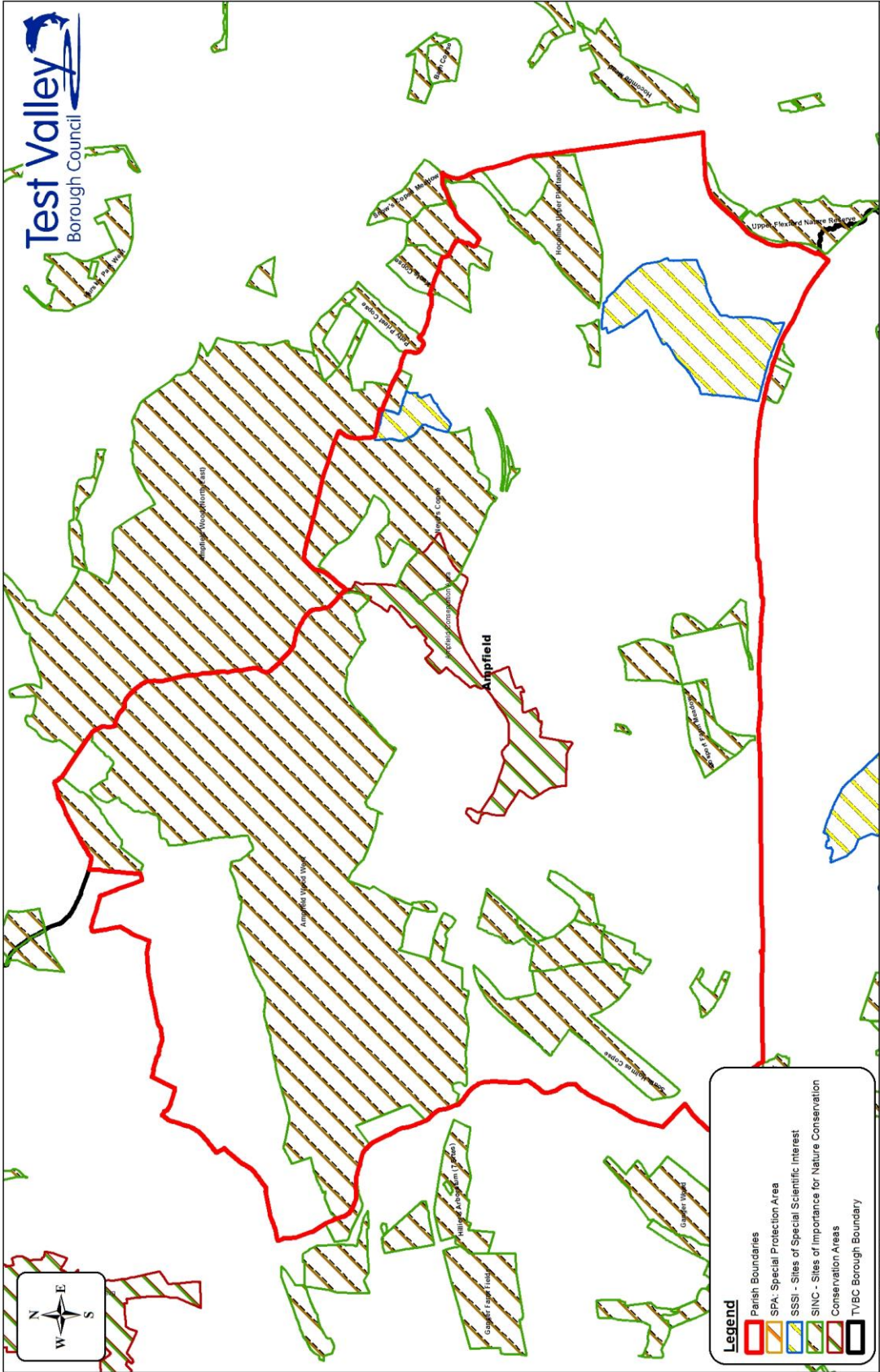
Offers a weekly shopping trip for anyone who has difficulty using public transport or lives more than 400m from a bus stop.

More information can be found here:

<http://bit.ly/2ezKzud>

Further community transport information for Test Valley can be found on Hampshire County Council's website:

<http://bit.ly/2ecJuLK>



**Legend**

- Parish Boundaries
- SPA - Special Protection Area
- SSSI - Sites of Special Scientific Interest
- SINC - Sites of Importance for Nature Conservation
- Conservation Areas
- TV/BC Borough Boundary

Scale: NTS@A3L  
 Date: 16th March 2016  
 Drawn: Ian Moodie  
 Dept: GIS  
 Doc:

**Map Showing Designated Sites Within Ampfield Parish**

THIS PLAN WAS REPRODUCED FROM ORDNANCE SURVEY MATERIAL WITH THE PERMISSION OF HER MAJESTY'S STATIONERY OFFICE © CROWN COPYRIGHT. INFORMATION IN THIS PLAN IS UNCLASSIFIED AND IS NOT PROTECTED BY CROWN COPYRIGHT. IT MAY BE REPRODUCED OR TRANSMITTED IN ANY FORM OR BY ANY MEANS WITHOUT PERMISSION. CIVIL PROCEEDINGS IN CONNECTION WITH THIS PLAN MAY BE BROUGHT AGAINST THE CONTROLLER OF HER MAJESTY'S STATIONERY OFFICE. LICENCE NO. 1000242955.2014

## **Additional information**

The information in this profile has been prepared by Test Valley Borough Council's Policy Team in partnership with the Local Government Association. If you would like further information, please contact the Policy Team on 01264 368000 or [policyteam@testvalley.gov.uk](mailto:policyteam@testvalley.gov.uk), and we will be happy to work with you to provide a more detailed profile.

This profile contains key information for you to use to contribute to the development of a Neighbourhood Plan or other community project. If you know of any additional information about the parish that may be of use (for example, information on local facilities) please get in touch and we will endeavor to work with you to add to or change the profile.

Please note that most of the data featured in this profile is taken from the 2011 Census, whilst the population data is taken from Hampshire County Council's 2016 Small Area Population Forecast. Therefore, there is some discrepancy in population figures.