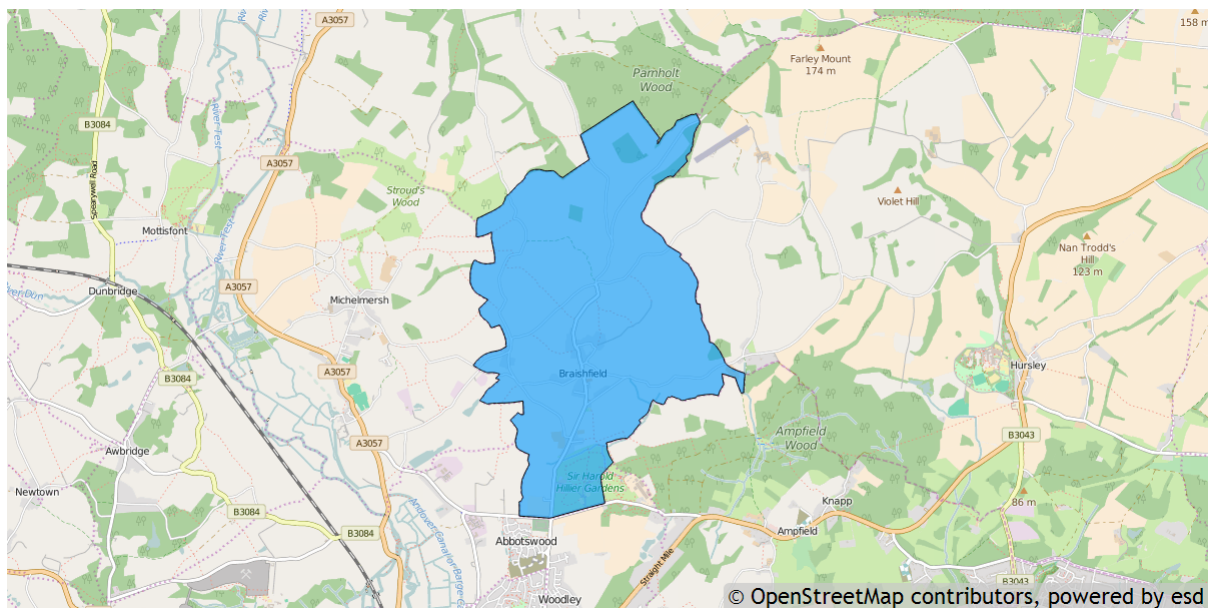


## Braishfield parish profile

This profile provides a summary of the latest available information on the demographic make-up of the Braishfield parish within Test Valley. It looks at information on topics such as the population structure, economic, housing, health and educational information for the parish.

Braishfield is one of the 59 parishes in Test Valley. It has an area of 897 hectares which represents 1.4% of the total area of Test Valley.



### Elected representatives

<p><b>Hampshire County Councillor</b></p> <p><b>Clr Alan Dowden</b> Home: 02380 266458 Email: <a href="mailto:alan.dowden@hants.gov.uk">alan.dowden@hants.gov.uk</a></p>	<p><b>Test Valley Borough Councillor</b></p> <p><b>Clr Martin Hatley</b> Home: 02380 254040 Mobile: 07970 501050 Email: <a href="mailto:clirmhatley@testvalley.gov.uk">clirmhatley@testvalley.gov.uk</a></p>
<p><b>Braishfield Parish Council Chairman</b></p> <p><b>Ms Jane Bennett</b> Tel: 01794 368109 Email: <a href="mailto:jane.bennett76@btinternet.com">jane.bennett76@btinternet.com</a></p>	<p><b>Braishfield Parish Council Clerk</b></p> <p><b>Ms Kate Orange</b> Mobile: 07968 671604 Email: <a href="mailto:clerk@braishfield-pc.org">clerk@braishfield-pc.org</a></p>

## Residents

The estimated 2016 population of Braishfield parish is 648. This is expected to decrease to 637 by 2021 (a decrease of 1.7%).

Braishfield's resident population is 49.8% female and 50.2% male.

**Young people (0-19)** currently make up 18.4% of Braishfield's population; this is expected to fall to 16.5% by 2021.

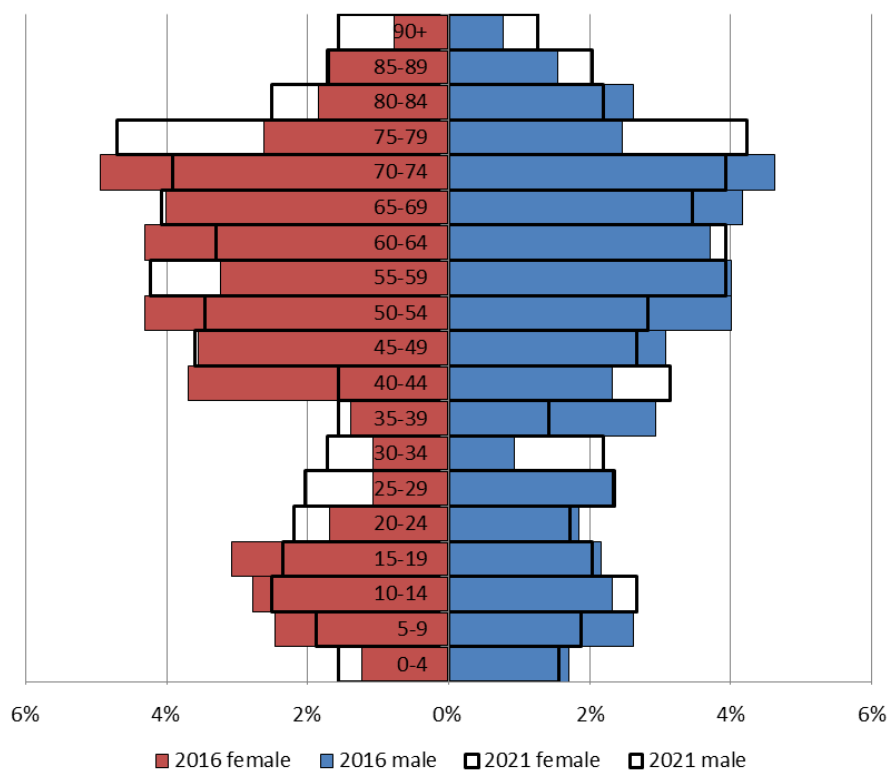
**Young adults (20-39)** currently make up 13.3% of the parish's population; this is expected to rise to 15.2% by 2021.

**Middle aged residents (40-64)** currently account for 36.3% of Braishfield's population; this is expected to fall to 32.7% by 2021.

Those **aged 65 and over** make up 32.1% of the parish's population; this is expected to rise to 35.6% by 2021.

Those **aged 85 and over** currently represent 4.8% of the population; this is expected to rise to 6.6% by 2021.

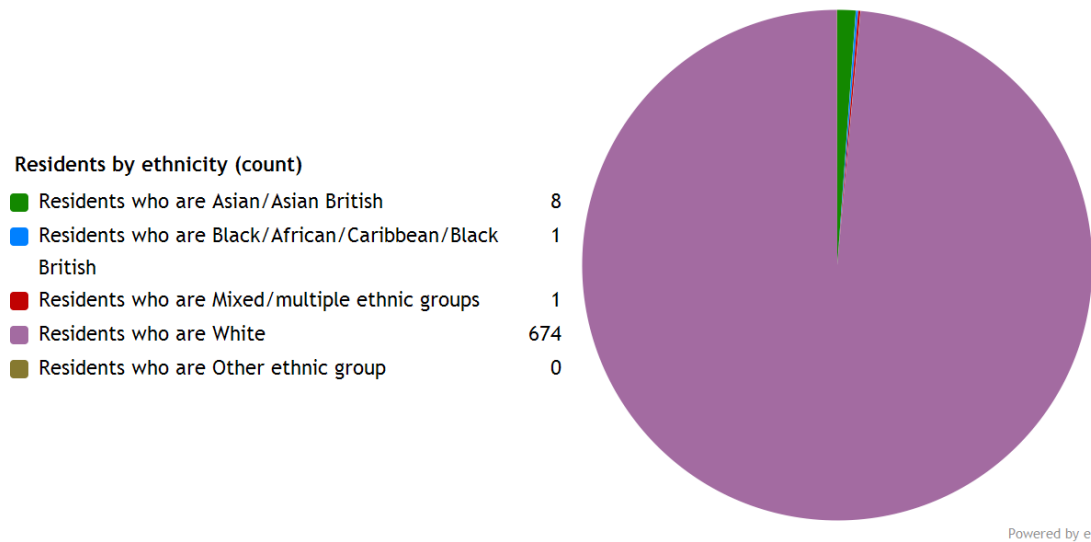
### Age of parish population



## Ethnicity

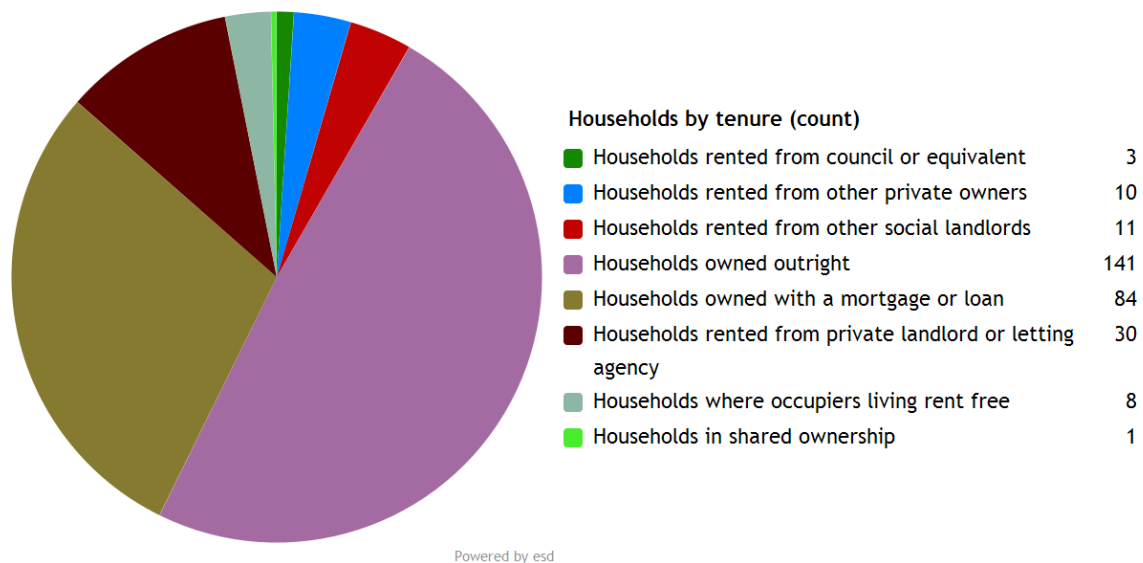
The largest ethnic group in Braishfield is “White” at 98.5% of the parish's population. That compares with a figure of 95.9% for Test Valley as a whole and 95.0% for Hampshire.

The second largest ethnic group (1.2%) is “Asian/Asian British”. That compares with 2.0% for Test Valley as a whole and 2.7% for Hampshire.



## Households

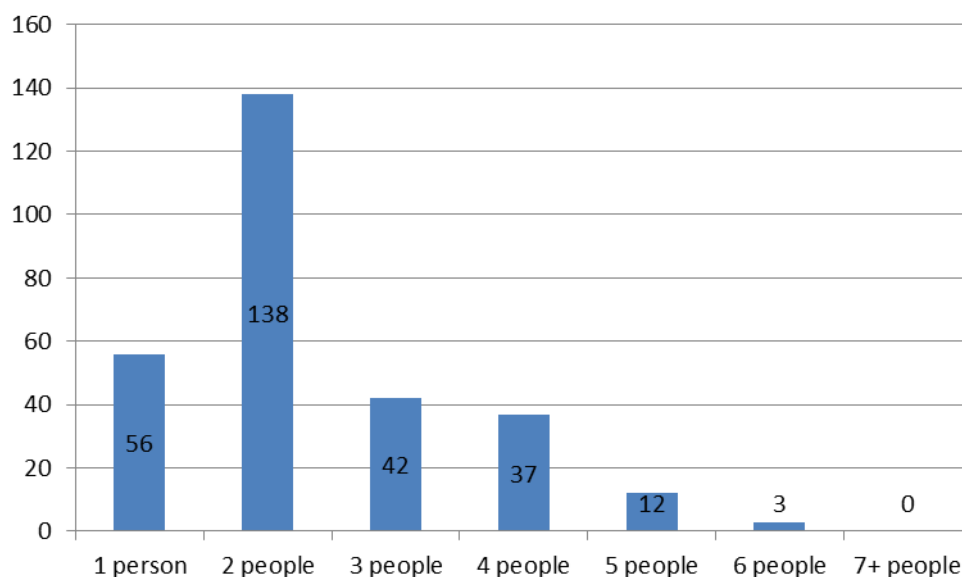
Braishfield parish has **288 households**, which represent 0.6% of Test Valley's 47,626 households. The household split by tenure is shown below (tenure refers to the financial arrangements under which a home is occupied)



The majority of properties (78.1%) are **owned by those who live in them**. This is higher than the Test Valley average of 70.4%.

13.9% of Braishfield households are **privately rented**, and 4.9% are **socially rented**. This compares to 12.9% and 14.4% respectively across Test Valley.

### Households by number of residents



47.9% of Braishfield's households are occupied by two people, and 19.4% by one person. 32.6% of the parish's households are occupied by more than two people.

Braishfield has 24 households with **dependent children aged 0 to 4**. That represents 8.3% of the parish's households.

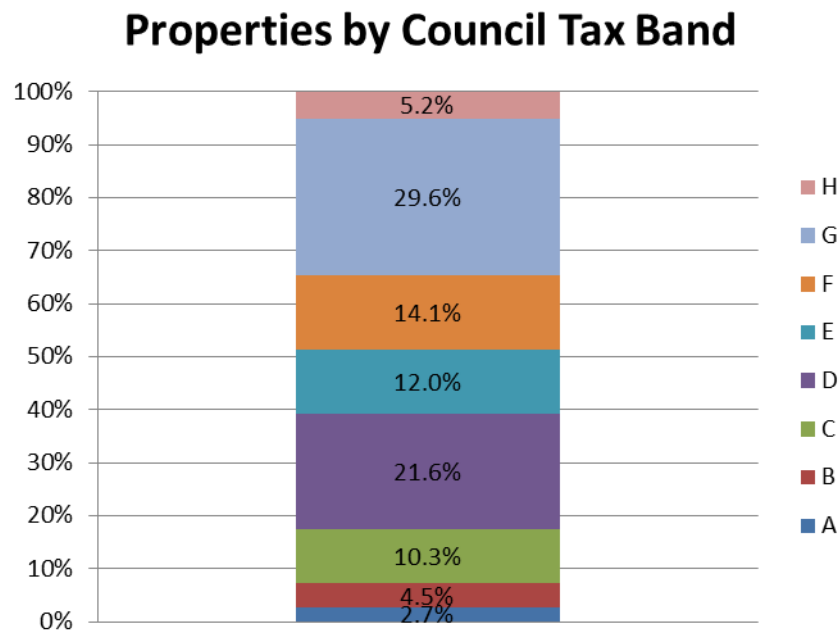
74 households in the parish have **dependent children of all ages**. That represents 25.7% of the parish's households.

### House prices

According to Zoopla, the average house price in Braishfield (as of September 2016) is **£678,185**. This has increased by 12.7% in the last five years.

It is estimated that **31.3% of households in south rural Test Valley cannot afford to buy a private property**. The central rural area includes the wards of Ampfield and Braishfield, Chilworth Nursling and Rownhams, North Baddesley, and Valley Park.

## Council Tax Bands



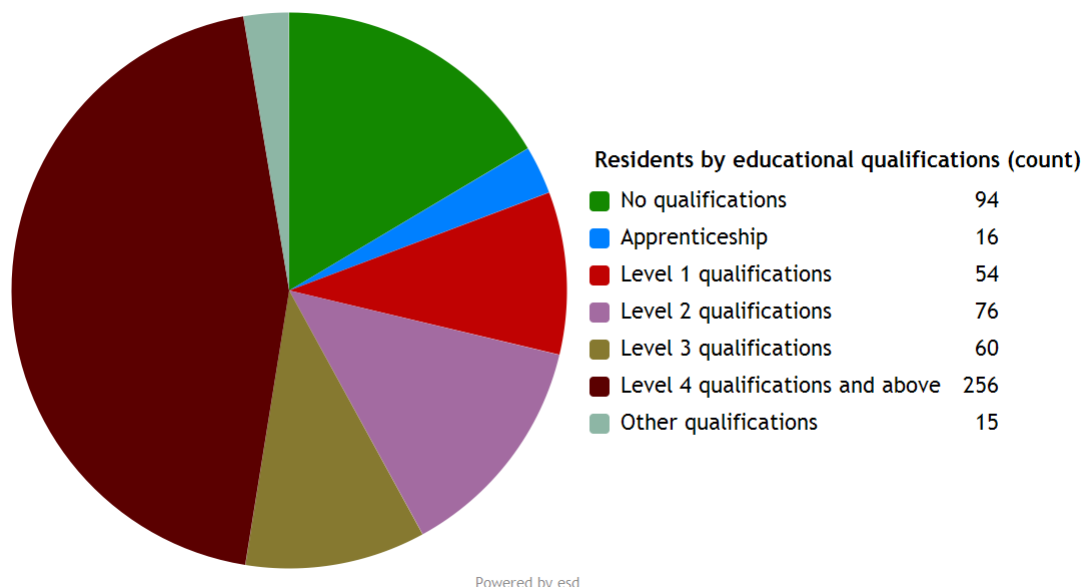
7.2% of Braishfield properties are at the **lower** end of the property market (Bands A and B). This compares to 22.2% for Test Valley as a whole.

43.9% of the parish's properties are in the **middle** range of the property market (Bands C to E). This compares to 60.8% across the whole borough.

48.9% of Braishfield's properties are at the **higher** end of the property market (Bands F to H). This compares to 17.1% of all Test Valley properties.

## Education

44.8% of Braishfield's residents have achieved **level 4 qualifications** and above compared to 30.5% in Test Valley as a whole. 16.5% of Braishfield's residents have **no qualifications** compared to 18.4% in Test Valley.



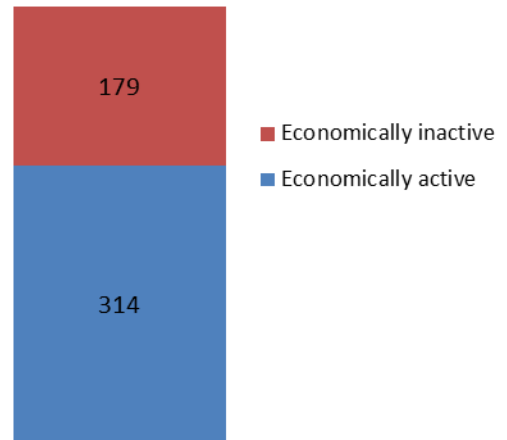
No qualifications	No academic or professional qualifications.
Level 1	1+O level passes, 1+CSE/GCSE any grades, NVQ level 1, Basic/Essential skills, NVQ Level 1.
Level 2	5+O level passes, 5+GCSEs (grades A*-C), 1 A level, 2-3 AS levels, City and Guilds Craft, NVQ level 2.
Level 3	2+A levels, Higher School certificate, NVQ level 3, City and Guilds Advanced Craft, BTEC National.
Level 4/5	Degree (e.g. BA, BSc) higher degree (e.g. MA, PhD, PGCE), NVQ levels 4 and 5, qualified teacher, nurse or accountant status, BTEC Higher.
Other qualification	Level unknown, vocational/work-related qualifications, foreign qualifications.

## Employment

63.7% of Braishfield residents aged 16-74 are **economically active**, compared to 73.4% of Test Valley residents. This includes people in full-, part- and self-employment, those who are actively seeking a job, and full-time students.

The remaining 36.3% of residents aged 16-74 are **economically inactive**, compared to 26.6% of Test Valley residents. This includes people who are retired, long-term sick or disabled, or who look after the home and family.

## Economic activity (count)

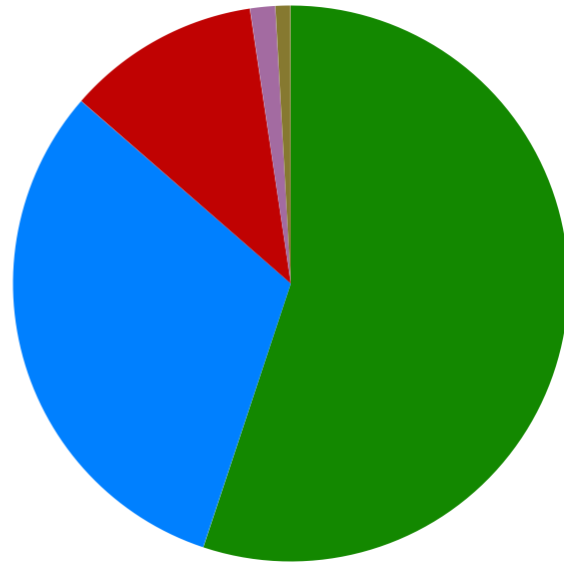


## Health

Braishfield has 10 (1.5%) residents that report being in **bad health** and 6 (0.9%) residents that report being in **very bad health**.

### Residents by level of health (count)

Very good health	377
Good health	214
Fair health	77
Bad health	10
Very bad health	6



Powered by esd

## Community plans

Braishfield has a **Village Design Statement** which was adopted by Test Valley Borough Council in April 2002 as Supplementary Planning Guidance. The design statement provides a description of the natural and man-made features of the village of Braishfield that are regarded by the members of the community as particularly distinctive. The document provides a guide to ensure that future development and change is managed to respect and preserve the character and distinctiveness of the village. It should thus contribute positively to protecting and enhancing the special nature and qualities of the community that is Braishfield today.

This document is available on the Council's website at the following page:

<http://bit.ly/2eeqUWb>

Details of any community planning exercises your parish is undertaking can be added here. Please get in touch with the Policy Team at the email address below and we will be more than happy to add information at your request.

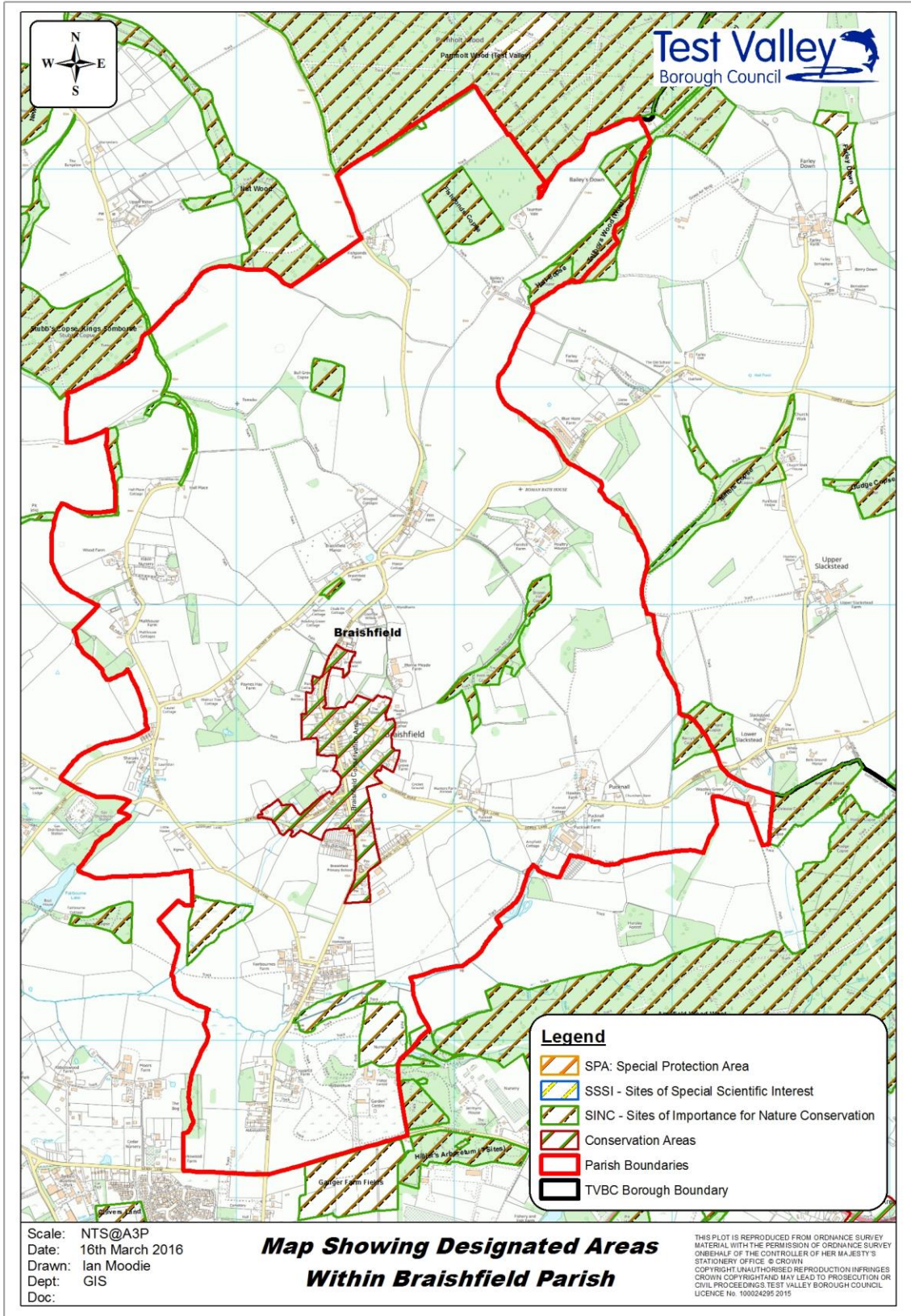
## Local facilities

<b>Food stores</b>	Yes
<b>Other shops</b>	None
<b>Primary schools</b>	Braishfield Primary School
<b>Secondary schools</b>	None
<b>Health facilities</b>	None
<b>Leisure facilities</b>	Football pitch Children's play area
<b>Public houses</b>	The Wheatsheaf Inn The Dog and Crook
<b>Community facilities</b>	Braishfield Village Hall Braishfield Sports Pavilion
<b>Churches</b>	All Saints United Reform Church
<b>Local recycling centres</b>	The Wheatsheaf Public House



## Public and community transport

<p><b>Bluestar 35</b></p> <p>This bus service runs between Romsey and Ampfield via several Test Valley villages, including Braishfield.</p> <p>More information about the route and the timetable can be found online at:</p> <p><a href="http://bit.ly/2epx42G">http://bit.ly/2epx42G</a></p>	<p><b>Dial-a-Ride</b></p> <p>Dial-a-Ride provides weekly door-to-door transport. The service is available to anyone who has no access to, or experiences difficulty with using public bus services. The service takes residents into Andover or Romsey to access local amenities.</p> <p>More information can be found online at:</p> <p><a href="http://bit.ly/2ezKzud">http://bit.ly/2ezKzud</a></p>
<p><b>Romsey Good Neighbours</b></p> <p>Romsey Good Neighbours is a voluntary car scheme to take residents to GP, dental, optician and hospital appointments.</p> <p>Further information can be found in the link below.</p> <p><a href="http://bit.ly/2eeqAqy">http://bit.ly/2eeqAqy</a></p>	<p>Further community transport information for Test Valley can be found on Hampshire County Council's website:</p> <p><a href="http://bit.ly/2ecJuLK">http://bit.ly/2ecJuLK</a></p>



## **Additional information**

The information in this profile has been prepared by Test Valley Borough Council's Policy Team in partnership with the Local Government Association. If you would like further information, please contact the Policy Team on 01264 368000 or [policyteam@testvalley.gov.uk](mailto:policyteam@testvalley.gov.uk), and we will be happy to work with you to provide a more detailed profile.

This profile contains key information for you to use to contribute to the development of a Neighbourhood Plan or other community project. If you know of any additional information about the parish that may be of use (for example, information on local facilities) please get in touch and we will endeavor to work with you to add to or change the profile.

Please note that most of the data featured in this profile is taken from the 2011 Census, whilst the population data is taken from Hampshire County Council's 2016 Small Area Population Forecast. Therefore, there is some discrepancy in population figures.