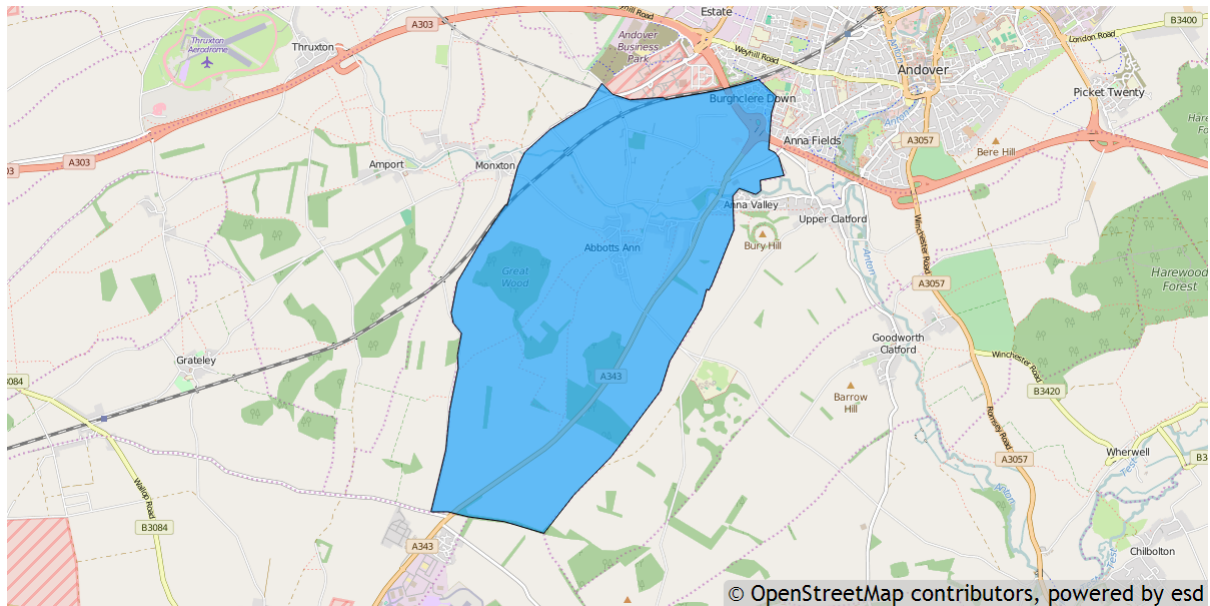


Abbotts Ann parish profile

This profile provides a summary of the latest available information on the demographic make-up of the Abbotts Ann parish within Test Valley. It looks at information on topics such as the population structure, economic, housing, health and educational information for the parish.

Abbotts Ann is one of the 59 parishes in Test Valley. It has an area of 1,307 hectares which represents 2.1% of the total area of Test Valley.



Elected representatives

| | |
|---|---|
| <p>Hampshire County Councillor</p> <p>ClIr Andrew Gibson Home: 01264 861138 Office: 01264 861087 Mobile: 07802 878248 Email: andrew.gibson@hants.gov.uk</p> | <p>Test Valley Borough Councillors</p> <p>ClIr Maureen Flood Home: 01264 710790 Email: clirmflood@testvalley.gov.uk</p> <p>ClIr Graham Stallard Home: 01264 710616 Email: cllrqstallard@testvalley.gov.uk</p> |
| <p>Abbotts Ann Parish Council Chairman</p> <p>ClIr Andrew Hayter Home: 01264 710256 Email@ cllr.andrewhayter@gmail.com</p> | <p>Abbotts Ann Parish Council Clerk</p> <p>Mrs Clare Cotterell Home: 01264 782869 Email: abbottsannparishcouncil@gmail.com</p> |

Residents

The estimated 2016 population of Abbots Ann parish is 2,471. This is expected to fall by 2021 to 2,387 (a fall of 3.4%).

Abbots Ann 's resident population is 50.5% female and 49.5% male.

Young people (0-19) currently make up 24.0% of Abbots Ann's population; this is expected to fall to 21.0% by 2021.

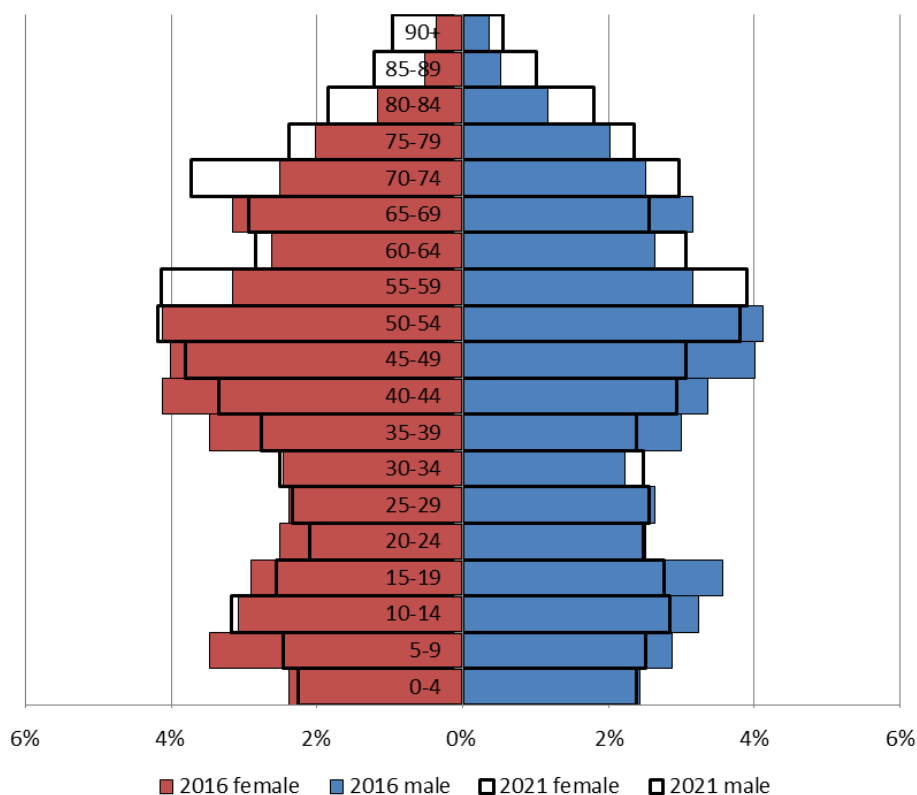
Young adults (20-39) currently make up 21.2% of the parish's population; this is expected to fall to 19.6% by 2021.

Middle aged residents (40-64) currently account for 35.3% of Abbots Ann's population; this is expected to fall slightly to 35.1% by 2021.

Those **aged 65 and over** make up 19.5% of the parish's population; this is expected to rise to 24.3% by 2021.

Those **aged 85 and over** currently represent 1.8% of the population; this is expected to rise to 3.7% by 2021.

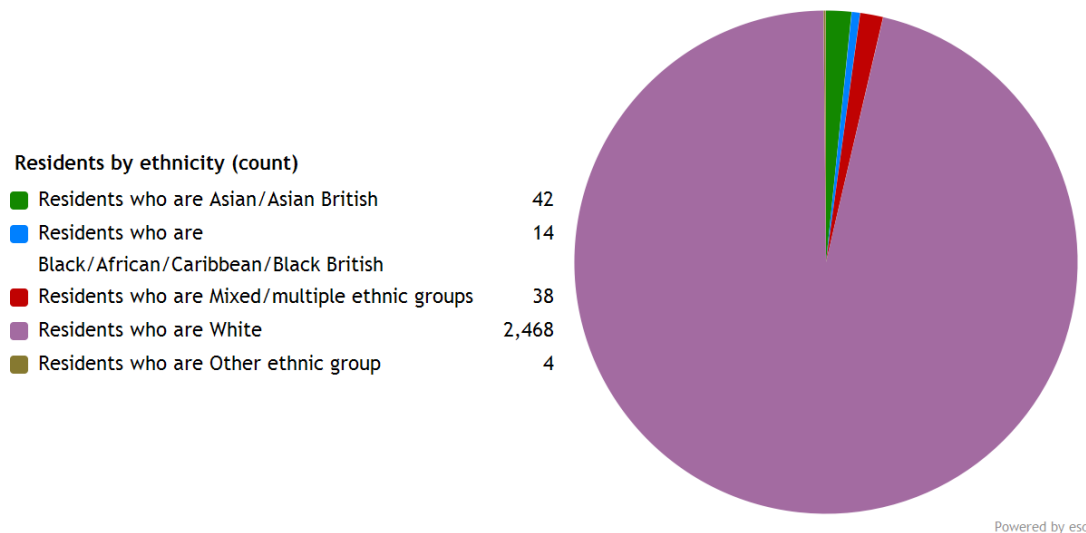
Age of parish population



Ethnicity

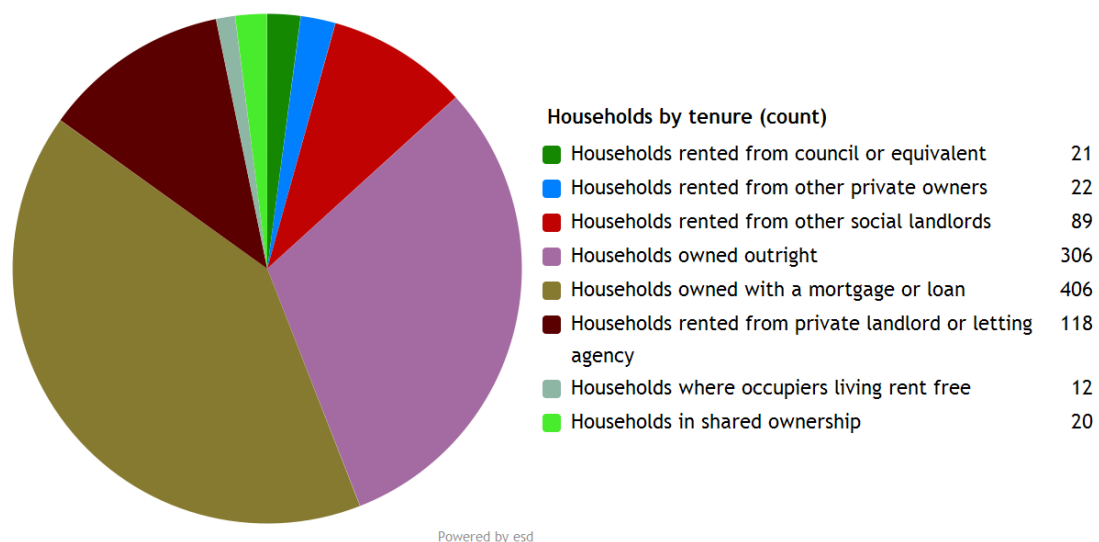
The largest ethnic group in Abbotts Ann is “White” at 96.2% of the parish's population. That compares with a figure of 95.9% for Test Valley as a whole and 95.0% for Hampshire.

The second largest ethnic group (1.6%) is “Asian/Asian British”. That compares with 2.0% for Test Valley as a whole and 2.7% for Hampshire.



Households

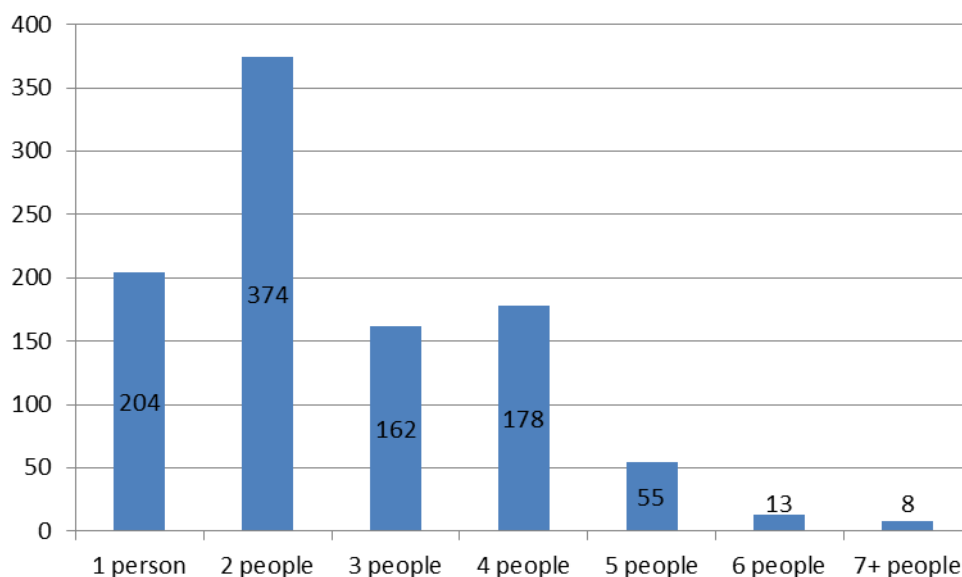
Abbotts Ann parish has **994 households**, which represent 2.1% of Test Valley's 47,626 households. The household split by tenure is shown below (tenure refers to the financial arrangements under which a home is occupied).



The majority of properties (71.6%) are **owned by those who live in them**. This is higher than the Test Valley average of 70.4%.

14.1% of Abbotts Ann households are **privately rented**, and 11.1% are **socially rented**. This compares to 12.9% and 14.4% respectively across Test Valley.

Households by number of residents



37.6% of Abbotts Ann's households are occupied by two people, and 20.5% by one person. 41.9% of the parish's households are occupied by more than two people.

Abbotts Ann has 123 households with **dependent children aged 0 to 4**. That represents 12.4% of the parish's households.

345 households in the parish have **dependent children of all ages**. That represents 34.7% of the parish's households.

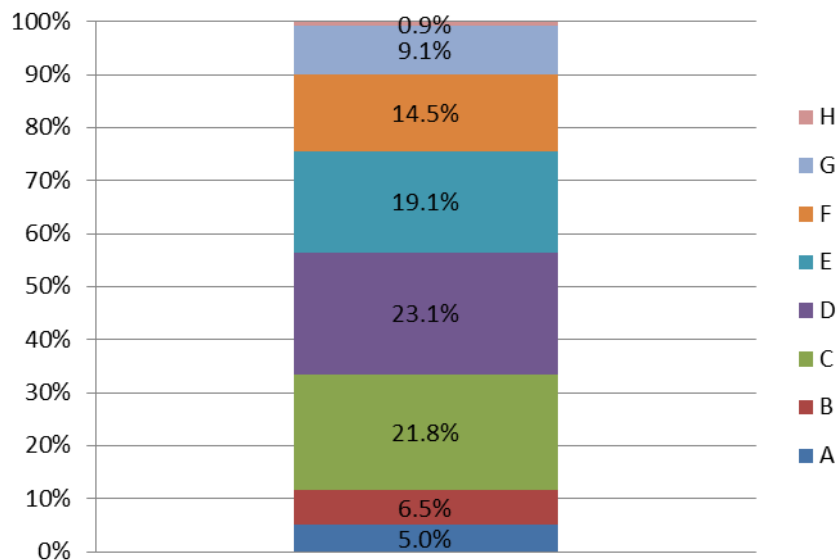
House prices

According to Zoopla, the average house price in Abbotts Ann (as of March 2016) is **£503,843**. This has increased by 20.4% in the last five years.

It is estimated that **38.2% of households in north rural Test Valley cannot afford to buy a private property**. The north rural area includes the wards of Anna, Ampport, Bourne Valley, Harewood, Over Wallop and Penton Bellinger.

Council Tax Bands

Properties by Council Tax Band



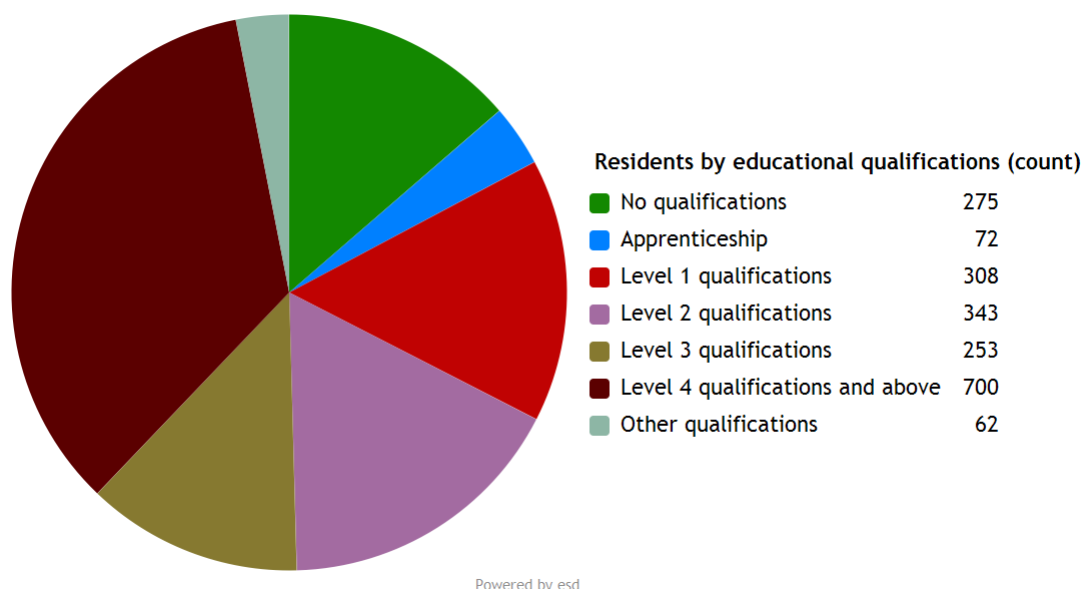
11.5% of Abbotts Ann properties are at the **lower** end of the property market (Bands A and B). This compares to 22.2% for Test Valley as a whole.

64.0% of the parish's properties are in the **middle** range of the property market (Bands C to E). This compares to 60.8% across the whole borough.

24.5% of Abbotts Ann's properties are at the **higher** end of the property market (Bands F to H). This compares to 17.1% of all Test Valley properties.

Education

27.3% of Abbotts Ann's residents have achieved **level 4 qualifications** and above compared to 30.5% in Test Valley as a whole. 10.7% of Abbotts Ann's residents have **no qualifications** compared to 18.4% in Test Valley.



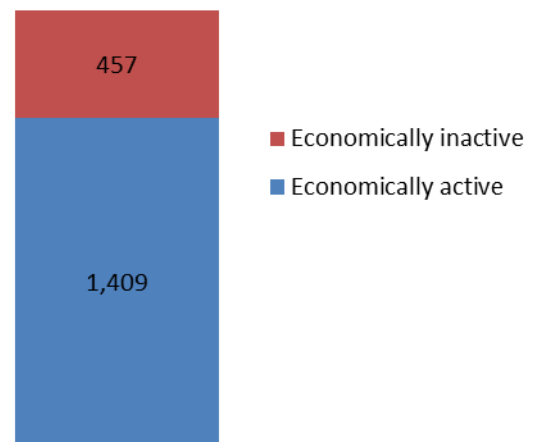
| | |
|---------------------|---|
| No qualifications | No academic or professional qualifications. |
| Level 1 | 1+O level passes, 1+CSE/GCSE any grades, NVQ level 1, Basic/Essential skills, NVQ Level 1. |
| Level 2 | 5+O level passes, 5+GCSEs (grades A*-C), 1 A level, 2-3 AS levels, City and Guilds Craft, NVQ level 2. |
| Level 3 | 2+A levels, Higher School certificate, NVQ level 3, City and Guilds Advanced Craft, BTEC National. |
| Level 4/5 | Degree (e.g. BA, BSc) higher degree (e.g. MA, PhD, PGCE), NVQ levels 4 and 5, qualified teacher, nurse or accountant status, BTEC Higher. |
| Other qualification | Level unknown, vocational/work-related qualifications, foreign qualifications. |

Employment

75.5% of Abbotts Ann residents aged 16-74 are **economically active**, compared to 73.4% of Test Valley residents. This includes people in full-, part- and self-employment, those who are actively seeking a job, and full-time students.

The remaining 24.5% of residents aged 16-74 are **economically inactive**, compared to 26.6% of Test Valley residents. This includes people who are retired, long-term sick or disabled, or who look after the home and family.

Economic activity (count)

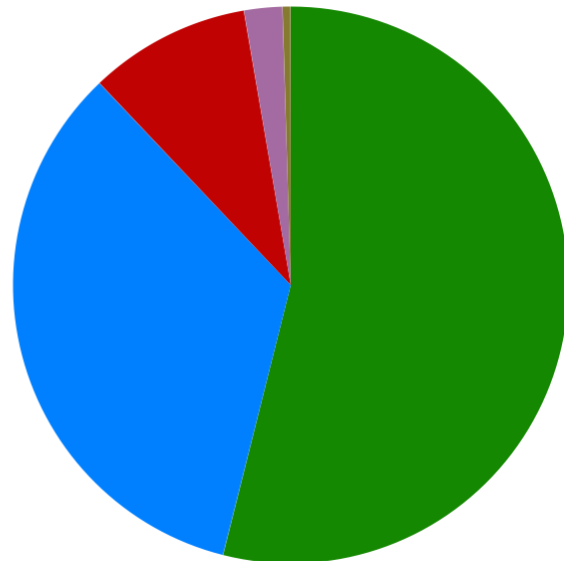


Health

Abbotts Ann has 57 (2.2%) residents that report being in **bad health** and 12 (0.5%) residents that report being in **very bad health**.

Residents by level of health (count)

| | |
|------------------|-------|
| Very good health | 1,384 |
| Good health | 872 |
| Fair health | 241 |
| Bad health | 57 |
| Very bad health | 12 |



Powered by esd

Community plans

Abbots Ann has a **Village Design Statement** which was adopted by Test Valley Borough Council in April 2000 as Supplementary Planning Guidance. The design statement provides a description of the natural and man-made features of the village of Abbots Ann that are regarded by the members of the community as particularly distinctive. The document provides a guide to ensure that future development and change is managed to respect and preserve the character and distinctiveness of the village. It should thus contribute positively to protecting and enhancing the special nature and qualities of the community that is Abbots Ann today.

This document is available on the Council's website at the following page:

<http://bit.ly/2dTYlrH>

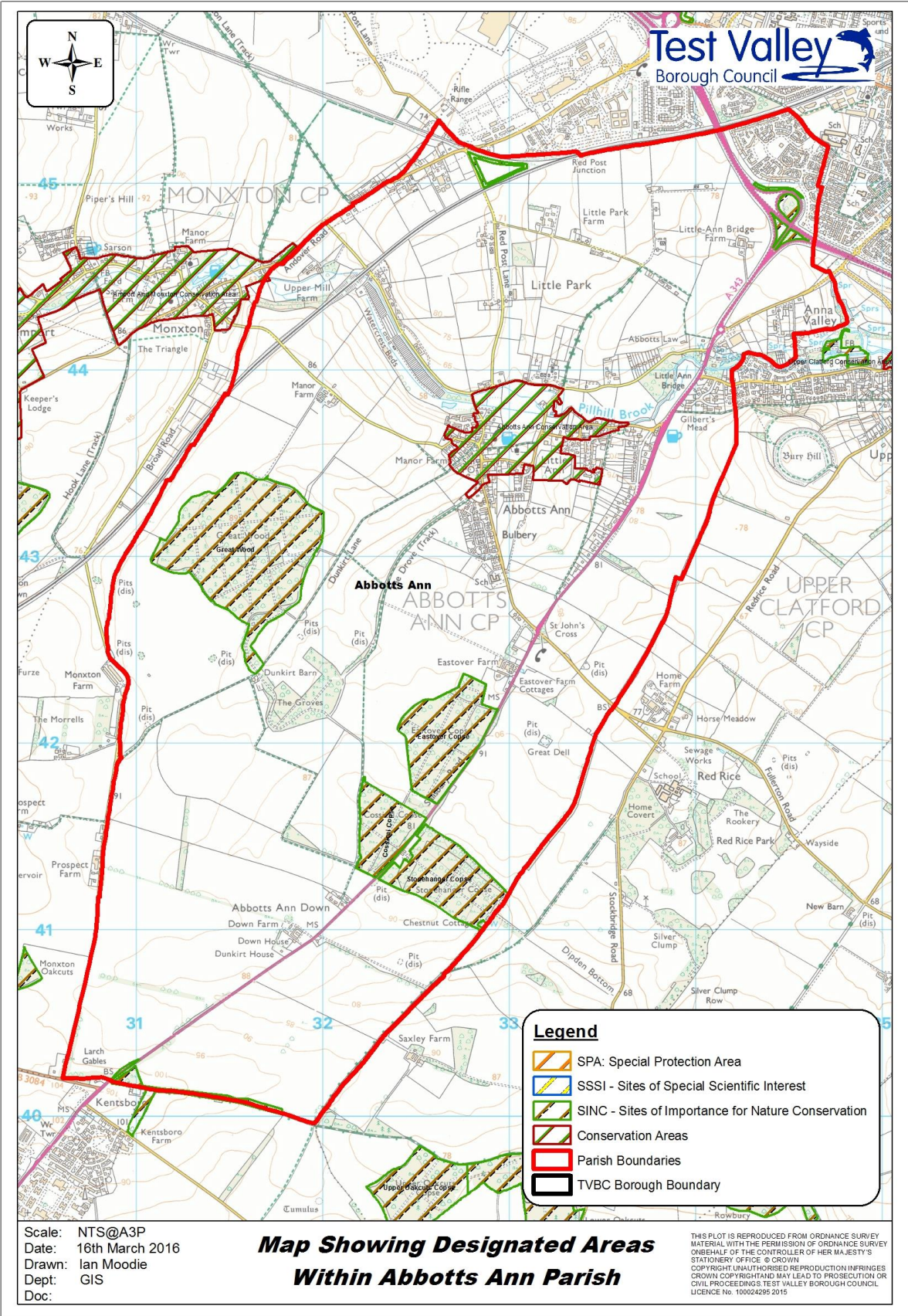
Details of any community planning exercises your parish is undertaking can be added here. Please get in touch with the Policy Team at the email address below and we will be more than happy to add information at your request.

Local facilities

| | |
|--------------------------------|---|
| Food stores | Yes |
| Other shops | Post Office |
| Primary schools | Abbots Ann Village School |
| Secondary schools | None |
| Health facilities | None |
| Leisure facilities | Bulbery Sports Field Former school playing field Play area by War Memorial Hall |
| Public houses | The Eagle The Poplar Farm Inn |
| Community facilities | War Memorial Village Hall |
| Churches | St Mary's Church |
| Local recycling centres | The Poplar Farm Inn |

Public and community transport

| | |
|--|--|
| <p>Wheeler's 87</p> <p>This bus service runs between Salisbury and Andover via several Test Valley villages, including Abbots Ann.</p> <p>More information about the route and the timetable can be found online at:</p> <p>http://bit.ly/2duxQYy</p> | <p>Dial-a-Ride</p> <p>Dial-a-Ride provides weekly door-to-door transport. The service is available to anyone who has no access to, or experiences difficulty with using public bus services. The service takes residents into Andover or Romsey to access local amenities.</p> <p>More information can be found online at:</p> <p>http://bit.ly/2ezKzud</p> |
| <p>Andover Neighbourcare</p> <p>Andover Neighbourcare provides a range of transport services for Hampshire Social Services and this includes Abbots Ann.</p> <p>Further information can be found on the community website:</p> <p>http://bit.ly/2eNYf9Y</p> | <p>Further community transport information for Test Valley can be found on Hampshire County Council's website:</p> <p>http://bit.ly/2ecJuLK</p> |



Additional information

The information in this profile has been prepared by Test Valley Borough Council's Policy Team in partnership with the Local Government Association. If you would like further information, please contact the Policy Team on 01264 368000 or policyteam@testvalley.gov.uk, and we will be happy to work with you to provide a more detailed profile.

This profile contains key information for you to use to contribute to the development of a Neighbourhood Plan or other community project. If you know of any additional information about the parish that may be of use (for example, information on local facilities) please get in touch and we will endeavor to work with you to add to or change the profile.

Please note that most of the data featured in this profile is taken from the 2011 Census, whilst the population data is taken from Hampshire County Council's 2016 Small Area Population Forecast. Therefore, there is some discrepancy in population figures.