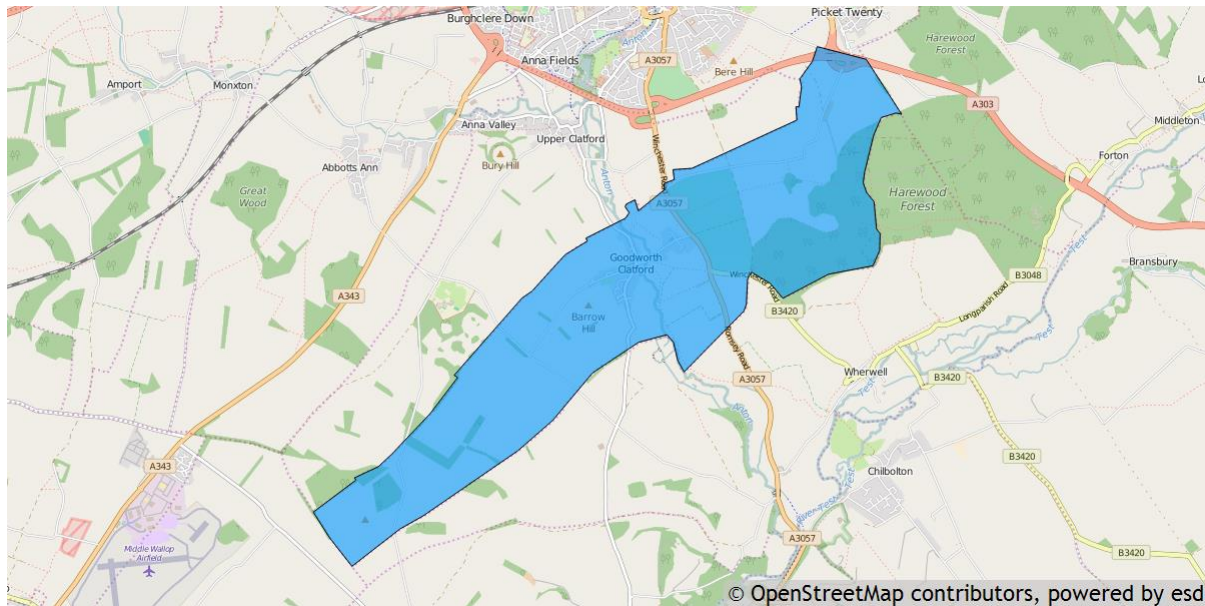


## Goodworth Clatford parish profile

This profile provides a summary of the latest available information on the demographic make-up of the Goodworth Clatford parish within Test Valley. It looks at information on topics such as the population structure, economic, housing, health and educational information for the parish.

Goodworth Clatford is one of the 59 parishes in Test Valley. It has an area of 1,141 hectares which represents 1.8% of the total area of Test Valley



### Elected representatives

<p><b>Hampshire County Councillor</b></p> <p><b>Cllr Andrew Gibson</b>            Home: 01264 861138            Office: 01264 861087            Mobile: 07802 878248            Email: <a href="mailto:andrew.gibson@hants.gov.uk">andrew.gibson@hants.gov.uk</a></p>	<p><b>Test Valley Borough Councillors</b></p> <p><b>Cllr Maureen Flood</b>            Home: 01264 710790            Email: <a href="mailto:cllrmflood@testvalley.gov.uk">cllrmflood@testvalley.gov.uk</a></p> <p><b>Cllr Graham Stallard</b>            Home: 01264 710616            Email: <a href="mailto:cllrgstallard@testvalley.gov.uk">cllrgstallard@testvalley.gov.uk</a></p>
<p><b>Goodworth Clatford Parish Council Chairman</b></p> <p><b>Cllr Robert Houghton</b>            Home: 01264 361714            Email: <a href="mailto:gcpc.bobhoughton@gmail.com">gcpc.bobhoughton@gmail.com</a></p>	<p><b>Goodworth Clatford Parish Council Clerk</b></p> <p><b>Mr Robert Wheadon</b>            Daytime: 01264 339365            Email: <a href="mailto:clerk2gcpc@clara.co.uk">clerk2gcpc@clara.co.uk</a></p>

## Residents

The estimated 2016 population of Goodworth Clatford parish is 752. This is expected to fall by 2021 to 722 (a fall of 4.0%).

Goodworth Clatford's resident population is 50.5% female and 49.5% male.

**Young people (0-19)** currently make up 18.1% of Goodworth Clatford's population; this is expected to fall slightly to 17.6% by 2021.

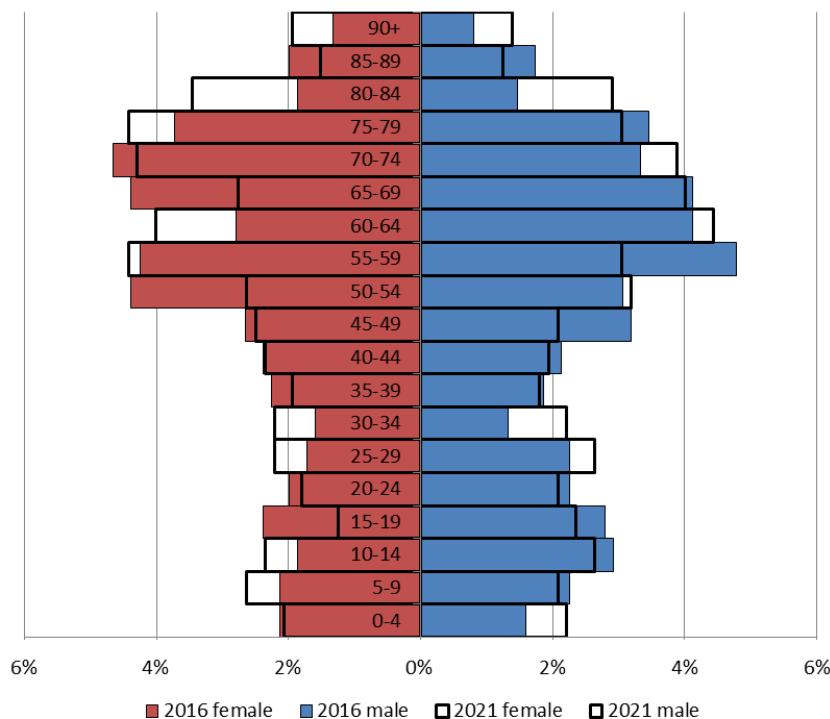
**Young adults (20-39)** currently make up 15.3% of the parish's population; this is expected to rise to 16.9% by 2021.

**Middle aged residents (40-64)** currently account for 33.8% of Goodworth Clatford's population; this is expected to fall to 30.6% by 2021.

Those **aged 65 and over** make up 32.8% of the parish's population; this is expected to rise to 34.9% by 2021.

Those **aged 85 and over** currently represent 5.9% of the population; this is expected to rise slightly to 6.1% by 2021.

### Age of parish population



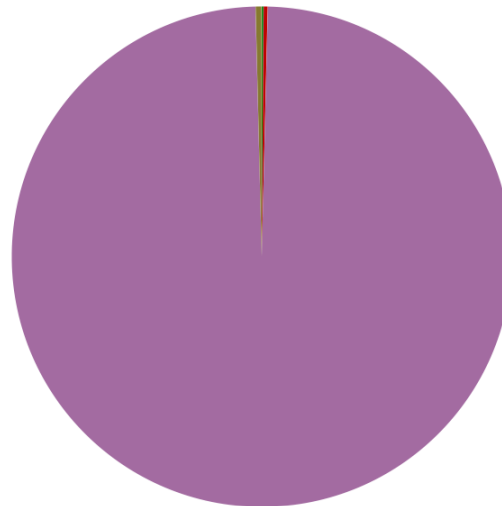
## Ethnicity

The largest ethnic group in Goodworth Clatford is “White” at 99.2% of the parish's population. That compares with a figure of 95.9% for Test Valley as a whole and 95.0% for Hampshire.

The second largest ethnic group (0.4%) is “Other”. That compares with 0.3% for Test Valley as a whole and 0.3% for Hampshire.

Residents by ethnicity (count)

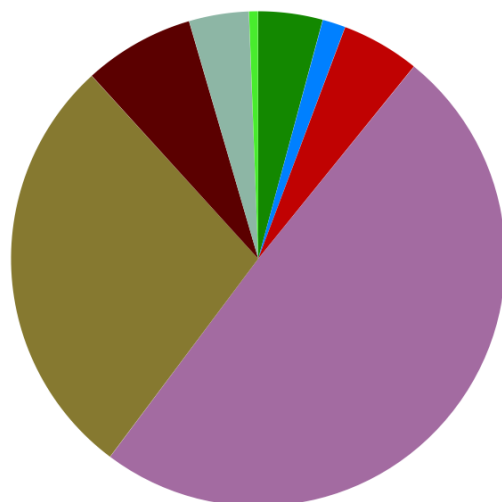
Residents who are Asian/Asian British	1
Residents who are Black/African/Caribbean/Black British	0
Residents who are Mixed/multiple ethnic groups	2
Residents who are White	754
Residents who are Other ethnic group	3



Powered by esd

## Households

Goodworth Clatford has **332 households**, which represent 0.7% of Test Valley's 47,626 households. The household split by tenure is shown below (tenure refers to the financial arrangements under which a home is occupied).



Households by tenure (count)

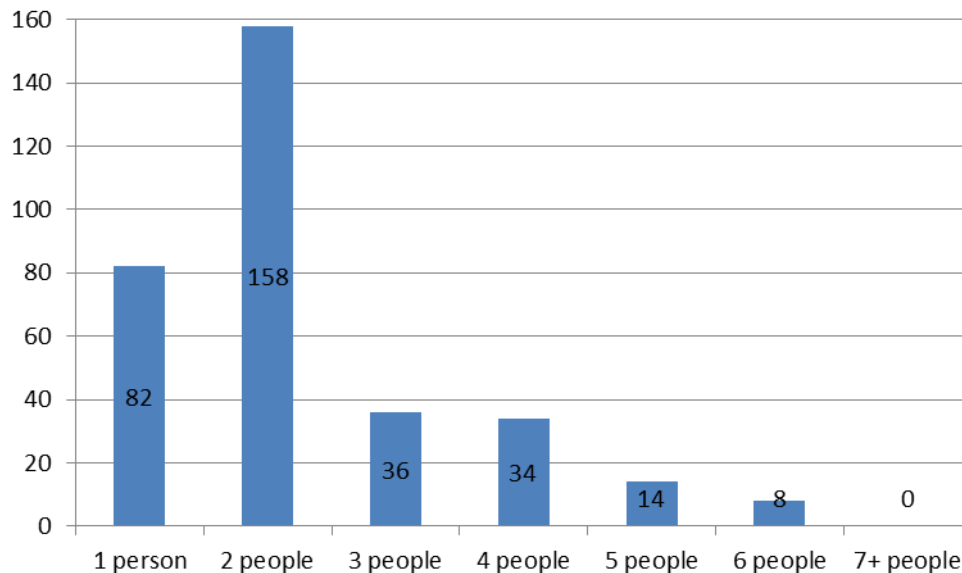
Households rented from council or equivalent	14
Households rented from other private owners	5
Households rented from other social landlords	17
Households owned outright	164
Households owned with a mortgage or loan	93
Households rented from private landlord or letting agency	24
Households where occupiers living rent free	13
Households in shared ownership	2

Powered by esd

The majority of properties (77.4%) are **owned by those who live in them**. This is higher than the Test Valley average of 70.4%.

8.7% of Goodworth Clatford households are **privately rented**, and 9.3% are **socially rented**. This compares to 12.9% and 14.4% respectively across Test Valley.

### Households by number of residents



47.6% of Goodworth Clatford's households are occupied by two people, and 24.7% by one person. 27.7% of the parish's households are occupied by more than two people.

Goodworth Clatford has 21 households with **dependent children aged 0 to 4**. That represents 6.3% of the parish's households.

69 households in the Parish have **dependent children of all ages**. That represents 20.8% of the parish's households.

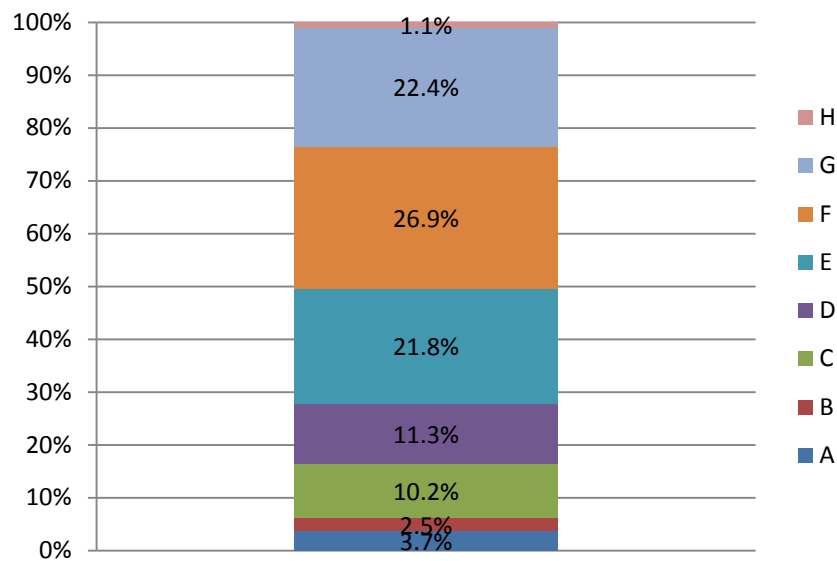
### House prices

According to Zoopla, the average house price in Goodworth Clatford (as of March 2016) is **£577,662**. This has increased by 20.4% in the last five years.

It is estimated that **38.2% of households in north rural Test Valley cannot afford to buy a private property**. The north rural area includes the wards of Anna, Amport, Bourne Valley, Harewood, Over Wallop and Penton Bellinger.

## Council Tax Bands

### Properties by Council Tax Band



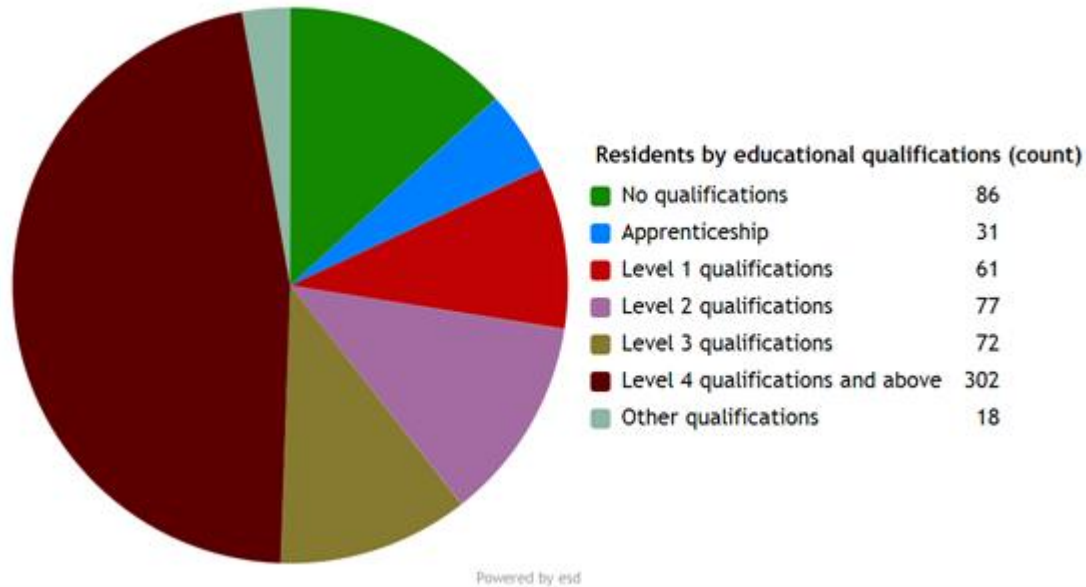
6.2% of Goodworth Clatford properties are at the **lower** end of the property market (Bands A and B). This compares to 22.2% for Test Valley as a whole.

43.3% of the parish's properties are in the **middle** range of the property market (Bands C to E). This compares to 60.8% across the whole borough.

50.4% of Goodworth Clatford's properties are at the **higher** end of the property market (Bands F to H). This compares to 17.1% of all Test Valley properties.

## Education

39.7% of Goodworth Clatford's residents have achieved **level 4 qualifications** and above compared to 30.5% in Test Valley as a whole. 11.3% of Goodworth Clatford's residents have **no qualifications** compared to 18.4% in Test Valley.



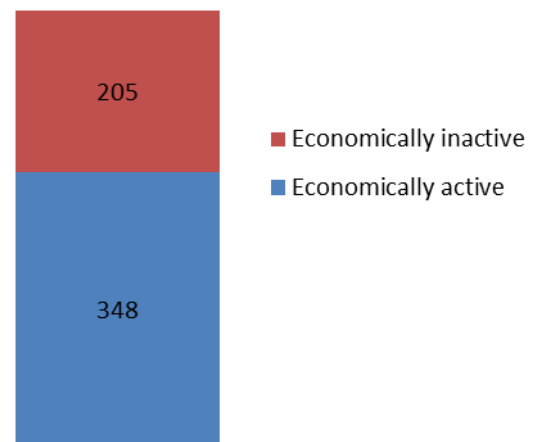
No qualifications	No academic or professional qualifications.
Level 1	1+O level passes, 1+CSE/GCSE any grades, NVQ level 1, Basic/Essential skills, NVQ Level 1.
Level 2	5+O level passes, 5+GCSEs (grades A*-C), 1 A level, 2-3 AS levels, City and Guilds Craft, NVQ level 2.
Level 3	2+A levels, Higher School certificate, NVQ level 3, City and Guilds Advanced Craft, BTEC National.
Level 4/5	Degree (e.g. BA, BSc) higher degree (e.g. MA, PhD, PGCE), NVQ levels 4 and 5, qualified teacher, nurse or accountant status, BTEC Higher.
Other qualification	Level unknown, vocational/work-related qualifications, foreign qualifications.

## Employment

62.9% of Goodworth Clatford residents aged 16-74 are **economically active**, compared to 73.4% of Test Valley residents. This includes people in full-, part- and self-employment, those who are actively seeking a job, and full-time students.

The remaining 37.1% of residents aged 16-74 are **economically inactive**, compared to 26.6% of Test Valley residents. This includes people who are retired, long-term sick or disabled, or who look after the home and family.

## Economic activity (count)

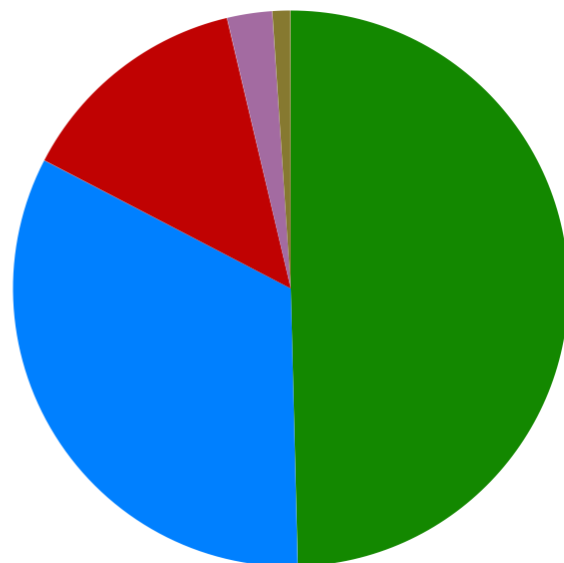


## Health

Goodworth Clatford has 20 (2.6%) residents that report being in **bad health** and 8 (1.1%) residents that report being in **very bad health**.

### Residents by level of health (count)

Very good health	377
Good health	251
Fair health	104
Bad health	20
Very bad health	8



Powered by esd

## Community plans

Goodworth Clatford has a **Village Design Statement** which was adopted by Test Valley Borough Council in April 2000 as Supplementary Planning Guidance.

The document is based upon the opinions of the residents of Goodworth Clatford expressed at public meetings and drawn together by the Village Design Group. It highlights those aspects of the village and surrounding countryside that are considered important and most valued by its residents. The aim is to ensure that further development and change are in keeping with the village's past and with the wishes of those who live in Goodworth Clatford.

This document is available on the Council's website at the following page:

<http://www.testvalley.gov.uk/resident/planningandbuildingcontrol/planningpolicy/village-design-statements/goodworthclatfordvds/>

Details of any community planning exercises your parish is undertaking can be added here. Please get in touch with the Policy Team at the email address below and we will be more than happy to add information at your request.

## Local facilities

<b>Food stores</b>	Yes
<b>Other shops</b>	Yes – Post office
<b>Primary schools</b>	Clatford Primary School
<b>Secondary schools</b>	None
<b>Health facilities</b>	None
<b>Leisure facilities</b>	Barrow Hill recreation ground Queen Elizabeth II field Jubilee recreation ground Sheep wash/Riverside Walk Footbridge/Green Meadow Lane
<b>Public houses</b>	The Clatford Arms The Royal Oak
<b>Community facilities</b>	Goodworth Clatford Village Club
<b>Churches</b>	St Peter's Church
<b>Local recycling centres</b>	The Clatford Arms The Royal Oak



## Public and community transport

### Wheelers 15 bus service

A bus service between Andover and Stockbridge stopping at various villages in Northern Test Valley.

More information can be found here:

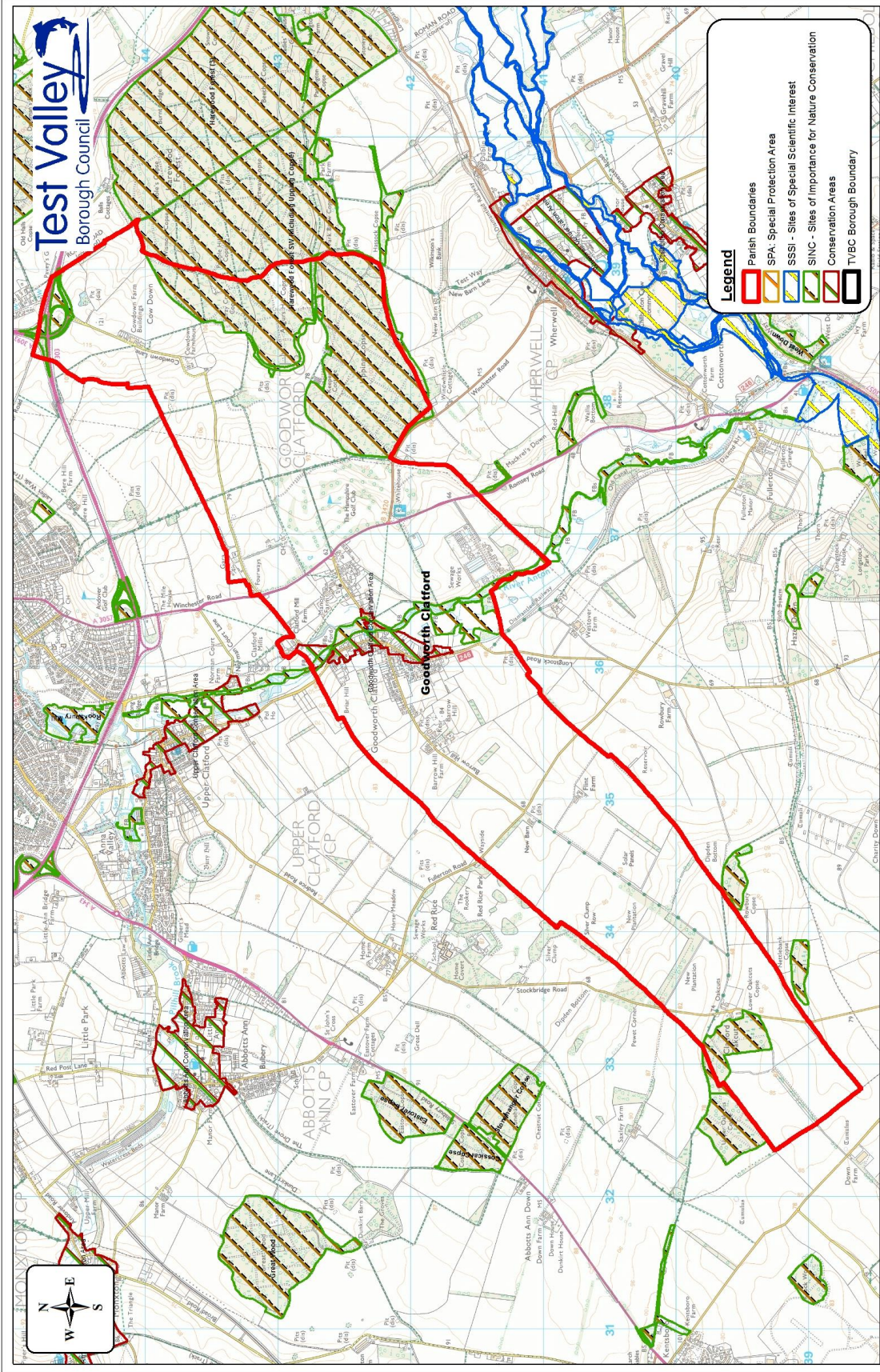
[http://wheelerstravel.co.uk/web\\_media/File/page%203%20v2.pdf](http://wheelerstravel.co.uk/web_media/File/page%203%20v2.pdf)

### Wheels to Work

Wheels to Work is a moped loan scheme and is designed for people who do not have access to public or private transport to get them to a job, vocational training or to attend interviews. A moped can be loaned for 3 to 12 months depending on circumstances. The scheme is aimed at people between the ages of 16-25.

More information on the scheme can be found at:

<http://www3.hants.gov.uk/passengertransport/communitytransport/wheels-to-work.htm>



**Legend**

- Parish Boundaries
- SPA: Special Protection Area
- SSSI - Sites of Special Scientific Interest
- SINC - Sites of Importance for Nature Conservation
- Conservation Areas
- TVBC Borough Boundary

THIS PLOT IS REPRODUCED FROM ORDNANCE SURVEY MATERIAL WITH THE PERMISSION OF ORDNANCE SURVEY UNDER THE CONTROL OF HER MAJESTY'S COPYRIGHT AND PATENT OFFICE. REPRODUCTION INFRINGES COPYRIGHT UNLESS OTHERWISE STATED. REPRODUCTION OR CIVIL PROCEEDINGS TEST VALLEY BOROUGH COUNCIL LICENCE NO. 10024289/2014

**Map Showing Designated Sites Within Goodworth Clatford Parish**

Scale: 1:25,000@A3L  
Date: 16th March 2016  
Drawn: Ian Moodie  
Dept: GIS  
Doc:

## **Additional information**

The information in this profile has been prepared by Test Valley Borough Council's Policy Team in partnership with the Local Government Association. If you would like further information, please contact the Policy Team on 01264 368000 or [policyteam@testvalley.gov.uk](mailto:policyteam@testvalley.gov.uk), and we will be happy to work with you to provide a more detailed profile.

This profile contains key information for you to use to contribute to the development of a Neighbourhood Plan or other community project. If you know of any additional information about the parish that may be of use (for example, information on local facilities) please get in touch and we will endeavor to work with you to add to or change the profile.

Please note that most of the data featured in this profile is taken from the 2011 Census, whilst the population data is taken from Hampshire County Council's 2016 Small Area Population Forecast. Therefore, there is some discrepancy in population figures.