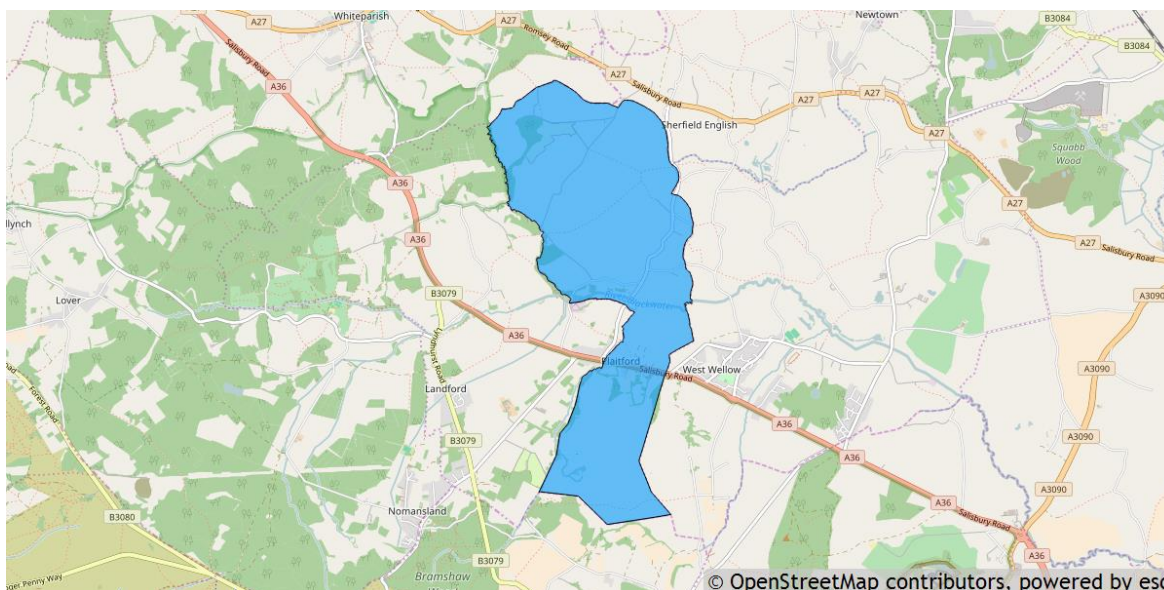


Melchet Park and Plaitford parish profile

This profile provides a summary of the latest available information on the demographic make-up of the Melchet Park and Plaitford parish within Test Valley. It looks at information on topics such as the population structure, economic, housing, health and educational information for the parish.

Melchet Park and Plaitford is one of the 59 parishes in Test Valley. It has an area of 753 hectares which represents 1.2% of the total area of Test Valley.



<p>Hampshire County Councillor</p> <p>Cllr Roy Perry Home: 01794 322472 Office: 01962 847750 Email: roy.perry@hants.gov.uk</p>	<p>Test Valley Borough Councillors</p> <p>Cllr Gordon Bailey Home: 01794 323557 Mobile: 07802 424731 Email: cllrgbailey@testvalley.gov.uk</p> <p>Cllr Nick Adams-King Home: 01794 516341 Mobile: 07771 727402 Email: cllrnadams-king@testvalley.gov.uk</p>
<p>Melchet Park and Plaitford Parish Council Chairman</p> <p>Cllr Keith Curtis Daytime: 01794 323366 Email: keith@keithcurtis.net</p>	<p>Melchet Park and Plaitford Parish Council Clerk</p> <p>Ms Jane Wright Daytime: 01794 322822 Email: clerk@plaitford.org.uk</p>

Residents

The estimated 2016 population of Melchet Park and Plaitford parish is 367. This is expected to rise to 396 by 2021 (an increase of 7.9%).

Melchet Park and Plaitford 's resident population is 46.6% female and 53.4% male.

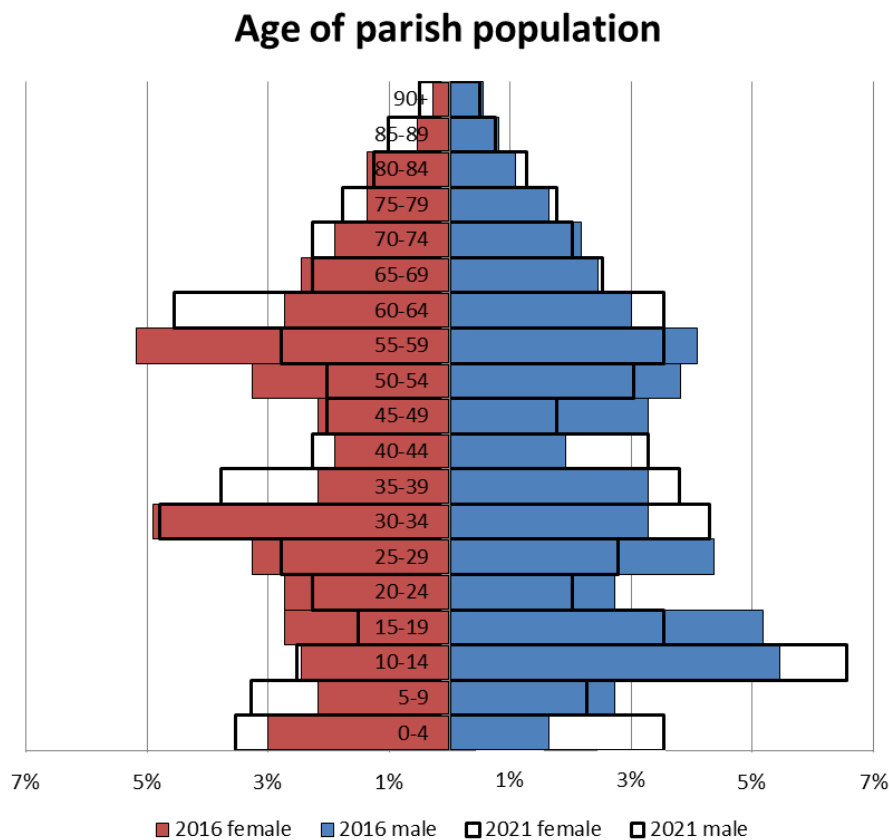
Young people (0-19) currently make up 25.3% of Melchet Park and Plaitford's population; this is expected to rise to 26.8% by 2021.

Young adults (20-39) currently make up 26.7% of the parish's population; this is expected to decrease slightly to 26.5% by 2021.

Middle aged residents (40-64) currently account for 31.3% of Melchet Park and Plaitford's population; this is expected to drop to 28.8% by 2021.

Those **aged 65 and over** make up 16.6% of the parish's population; this is expected to rise to 17.9% by 2021.

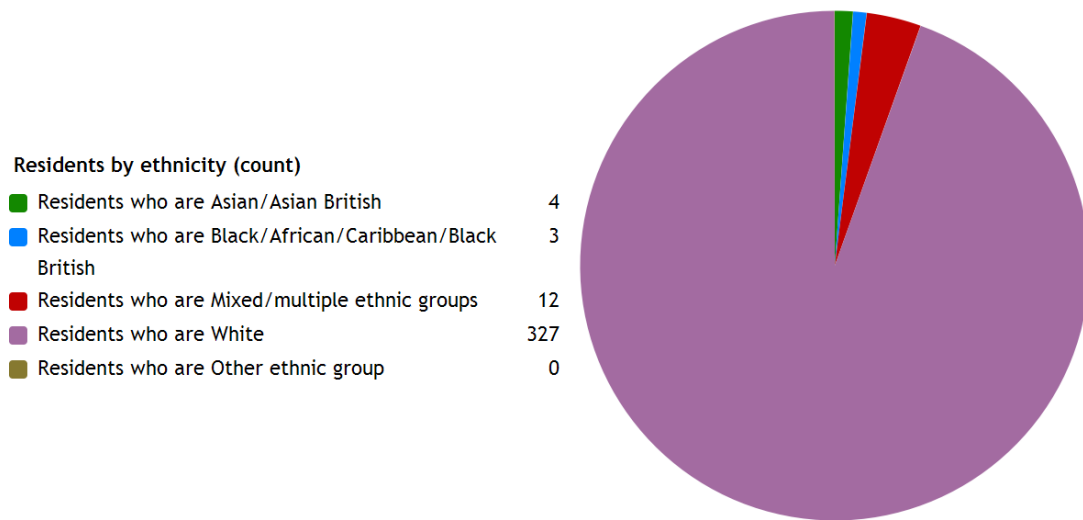
Those **aged 85 and over** currently represent 2.2% of the population; this is expected to rise slightly to 2.8% by 2021.



Ethnicity

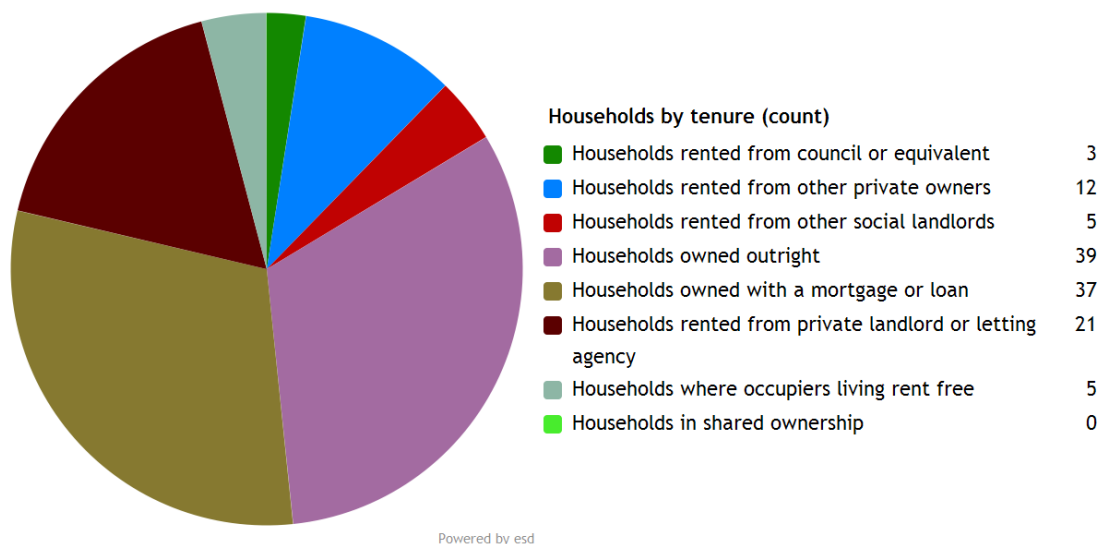
The largest ethnic group in Melchet Park and Plaitford is “White” at 94.5% of the parish's population. That compares with a figure of 95.9% for Test Valley as a whole and 95.0% for Hampshire.

The second largest ethnic group (3.5%) is “Mixed/multiple ethnic groups. That compares with 1.3% for Test Valley as a whole and 1.4% for Hampshire.



Households

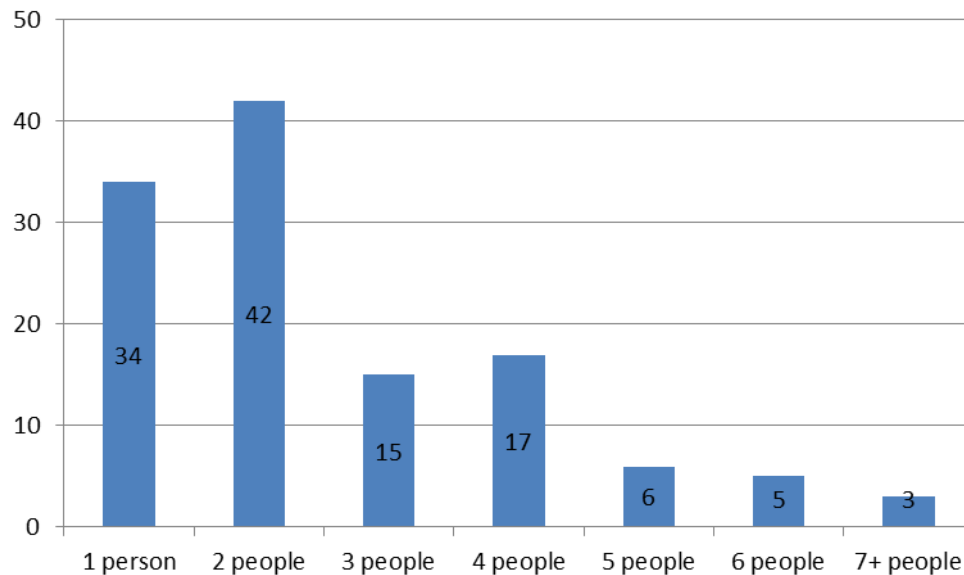
Melchet Park and Plaitford parish has **122 households**, which represent 0.3% of Test Valley's 47,626 households. The household split by tenure is shown below (tenure refers to the financial arrangements under which a home is occupied).



The majority of properties (62.3%) are **owned by those who live in them**. This is lower than the Test Valley average of 70.4%.

27.0% of Melchet Park and Plaitford households are **privately rented**, and 6.6% are **socially rented**. This compares to 12.9% and 14.4% respectively across Test Valley.

Households by number of residents



34.4% of Melchet Park and Plaitford's households are occupied by two people, and 27.9% by one person. 37.7% of the parish's households are occupied by more than two people.

Melchet Park and Plaitford has 9 households with **dependent children aged 0 to 4**. That represents 7.4% of the parish's households.

30 households in the parish have **dependent children of all ages**. That represents 24.6% of the parish's households.

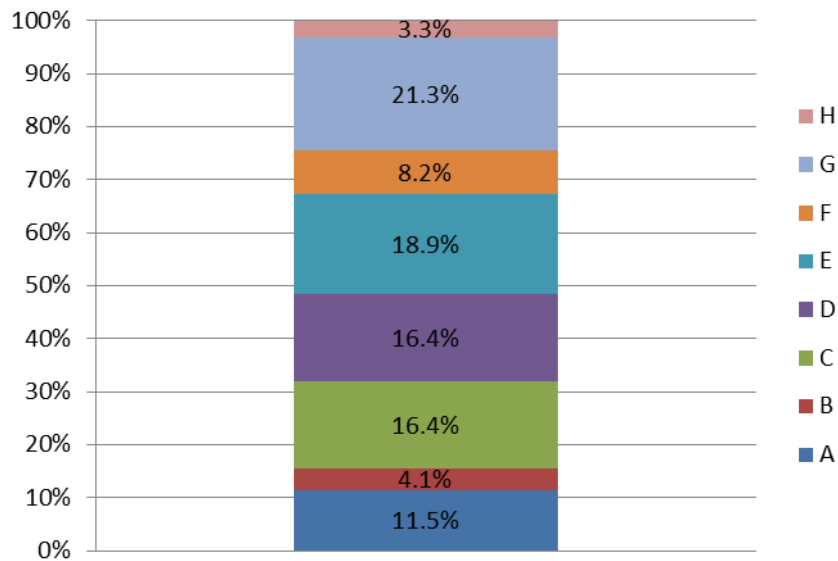
House prices

According to Zoopla, the average house price in Plaitford (as of September 2016) is **£658,709**. This has increased by 19.8% in the last five years.

It is estimated that **39.4% of households in central rural Test Valley cannot afford to buy a private property**. The central rural area includes the wards of Blackwater, Broughton and Stockbridge, Dun Valley, and Kings Somborne and Michelmersh.

Council Tax Bands

Properties by Council Tax Band



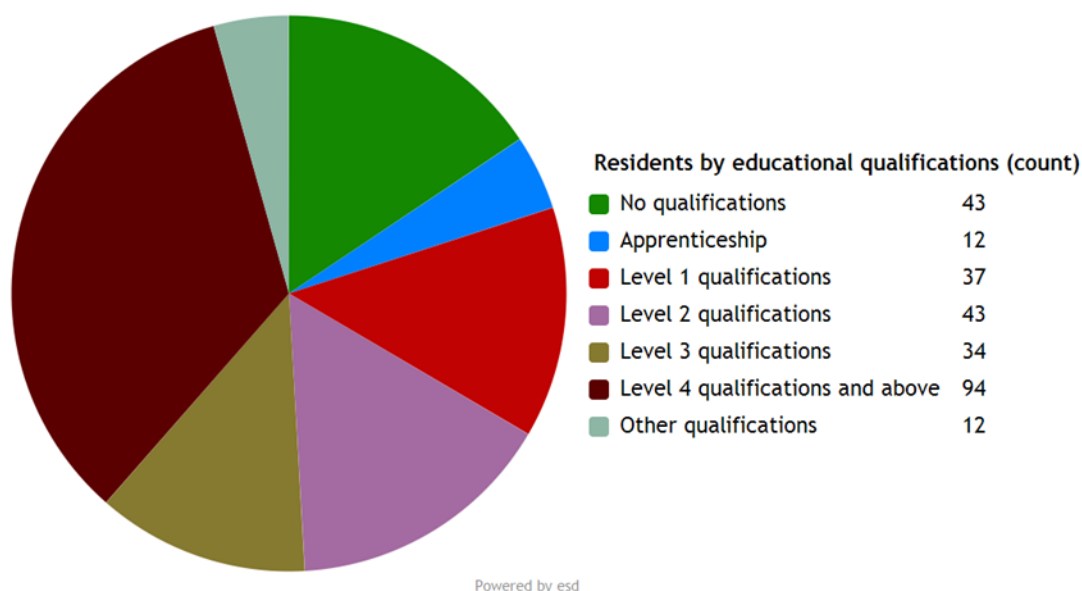
15.6% of Melchet Park and Plaitford properties are at the **lower** end of the property market (Bands A and B). This compares to 22.2% for Test Valley as a whole.

51.7% of the parish's properties are in the **middle** range of the property market (Bands C to E). This compares to 60.8% across the whole borough.

32.8% of Melchet Park and Plaitford's properties are at the **higher** end of the property market (Bands F to H). This compares to 17.1% of all Test Valley properties.

Education

34.2 % of Melchet Park and Plaitford's residents have achieved **level 4 qualifications** and above compared to 30.5% in Test Valley as a whole. 15.6% of Melchet Park and Plaitford's residents have **no qualifications** compared to 18.4% in Test Valley.



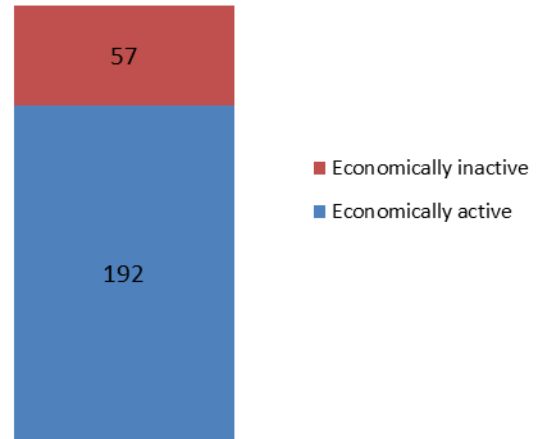
No qualifications	No academic or professional qualifications.
Level 1	1+O level passes, 1+CSE/GCSE any grades, NVQ level 1, Basic/Essential skills, NVQ Level 1.
Level 2	5+O level passes, 5+GCSEs (grades A*-C), 1 A level, 2-3 AS levels, City and Guilds Craft, NVQ level 2.
Level 3	2+A levels, Higher School Certificate, NVQ level 3, City and Guilds Advanced Craft, BTEC National.
Level 4/5	Degree (e.g. BA, BSc) higher degree (e.g. MA, PhD, PGCE), NVQ levels 4 and 5, qualified teacher, nurse or accountant status, BTEC Higher.
Other qualification	Level unknown, vocational/work-related qualifications, foreign qualifications.

Employment

77.1% of Melchet Park and Plaitford residents aged 16-74 are **economically active**, compared to 73.4% of Test Valley residents. This includes people in full, part and self-employment, those who are actively seeking a job, and full-time students.

The remaining 22.9% of residents aged 16-74 are **economically inactive**, compared to 26.6% of Test Valley residents. This includes people who are retired, long-term sick or disabled, or who look after the home and family.

Economic activity (count)

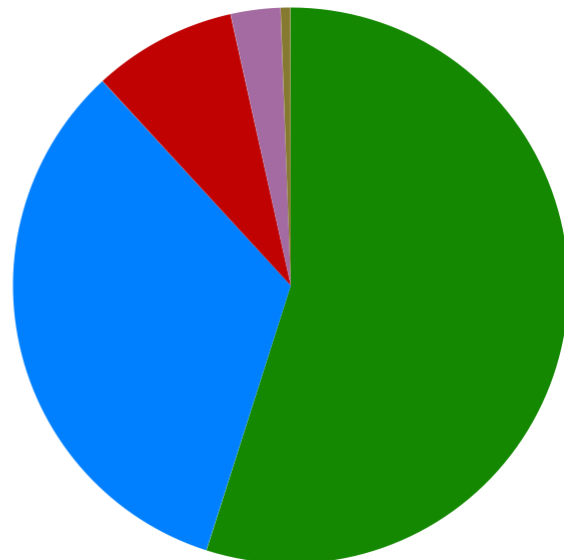


Health

Melchet Park and Plaitford has 10 (2.9%) residents that report being in **bad health** and 2 (0.6%) residents that report being in **very bad health**.

Residents by level of health (count)

Very good health	190
Good health	115
Fair health	29
Bad health	10
Very bad health	2



Powered by esd

Community plans

Details of any community planning exercises your parish is undertaking can be added here. Please get in touch with the Policy Team at the email address below and we will be more than happy to add information at your request.

Local facilities

Food stores	None
Other shops	None
Primary schools	None
Secondary schools	St Edwards School
Health facilities	None
Leisure facilities	Plaitford Common
Public houses	The Shoe Inn
Community facilities	Plaitford Village Hall
Churches	St Peter's Church
Local recycling centres	Paitford Village Hall

Public and community transport

Bluestar bus service 39

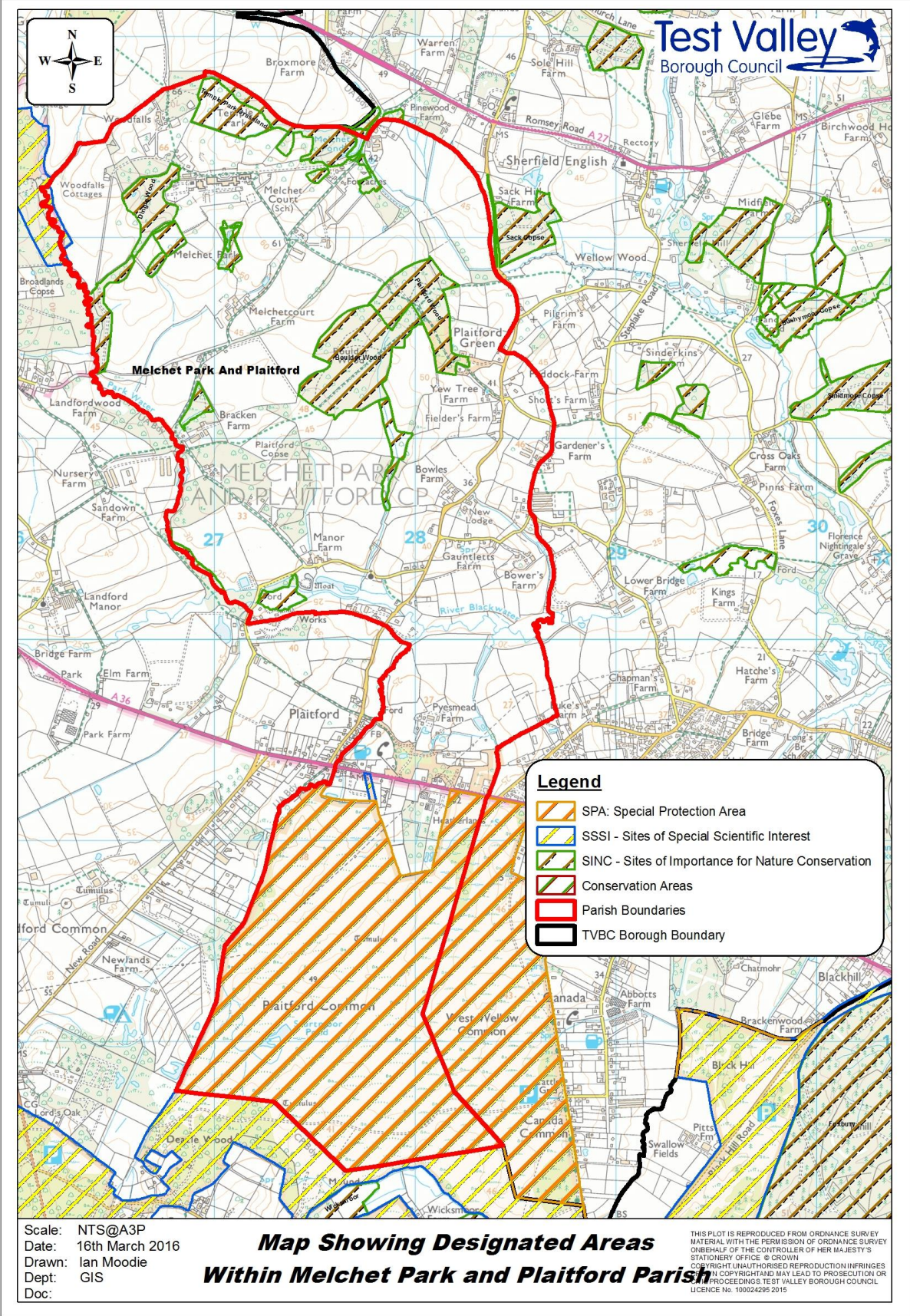
This bus service runs between Nomansland and Romsey via several Test Valley villages, including Plaitford.

More information about the route and the timetable can be found online at:

<http://bit.ly/2dUt6ww>

Further community transport information for Test Valley can be found on Hampshire County Council's website:

<http://bit.ly/2ecJuLK>



Additional information

The information in this profile has been prepared by Test Valley Borough Council's Policy Team in partnership with the Local Government Association. If you would like further information, please contact the Policy Team on 01264 368000 or policyteam@testvalley.gov.uk, and we will be happy to work with you to provide a more detailed profile.

This profile contains key information for you to use to contribute to the development of a Neighbourhood Plan or other community project. If you know of any additional information about the parish that may be of use (for example, information on local facilities) please get in touch and we will endeavor to work with you to add to or change the profile.

Please note that most of the data featured in this profile is taken from the 2011 Census, whilst the population data is taken from Hampshire County Council's 2016 Small Area Population Forecast. Therefore, there is some discrepancy in population figures.