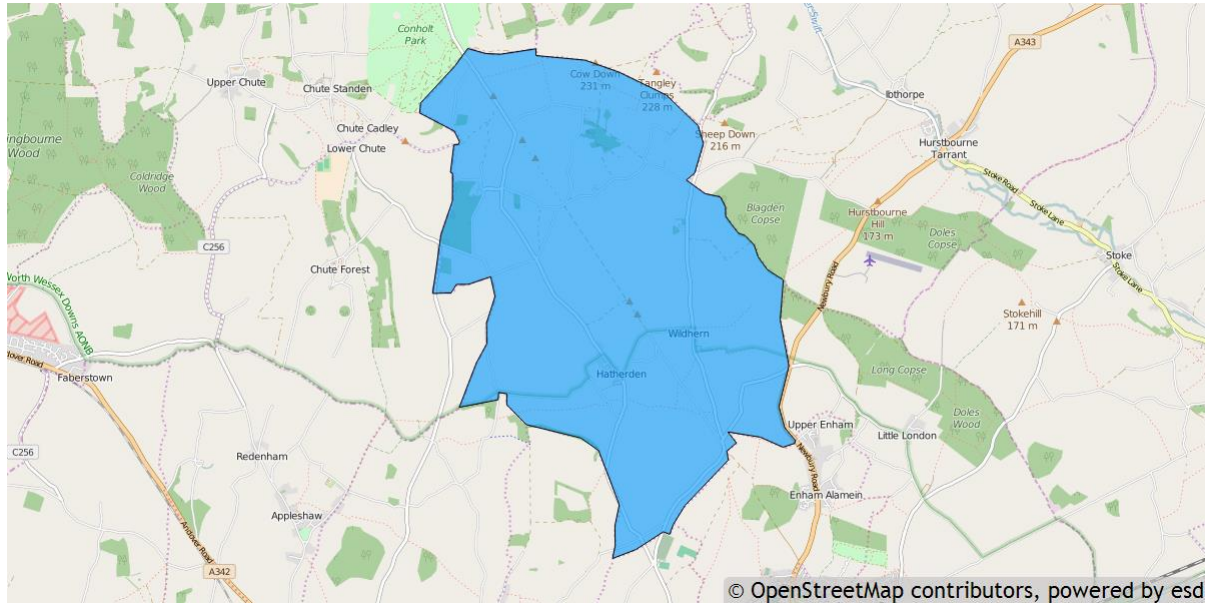


Tangley parish profile

This profile provides a summary of the latest available information on the demographic make-up of the Tangley parish within Test Valley. It looks at information on topics such as the population structure, economic, housing, health and educational information for the parish.

Tangley is one of the 59 parishes in Test Valley. It has an area of 1,624 hectares which represents 2.6% of the total area of Test Valley.



Elected representatives

<p>Hampshire County Councillor</p> <p>Cllr Timothy Rolt Home: 01264 358365 Mobile: 07795 204233 Email: timothy.rolt@hants.gov.uk</p>	<p>Test Valley Borough Councillor</p> <p>Cllr Peter Giddings Home: 01794 737647 Mobile: 07721 051832 Email: cllrpgiddings@testvalley.gov.uk</p>
<p>Tangley Parish Council Chairman</p> <p>Cllr Brian Comley Home: 01264 730330 Email: brian.comley@btinternet.com</p>	<p>Tangley Parish Council Clerk</p> <p>Ms Julia Rennie Daytime: 01264 735255 Email: clerk.tangley@parish.hants.gov.uk</p>

Residents

The estimated 2016 population of Tangley parish is 543. This is expected to rise slightly to 545 by 2021 (an increase of 0.4%).

Tangley's resident population is 53.0% female and 47.0% male.

Young people (0-19) currently make up 20.1% of Tangley's population; this is expected to rise slightly to 20.7% by 2021.

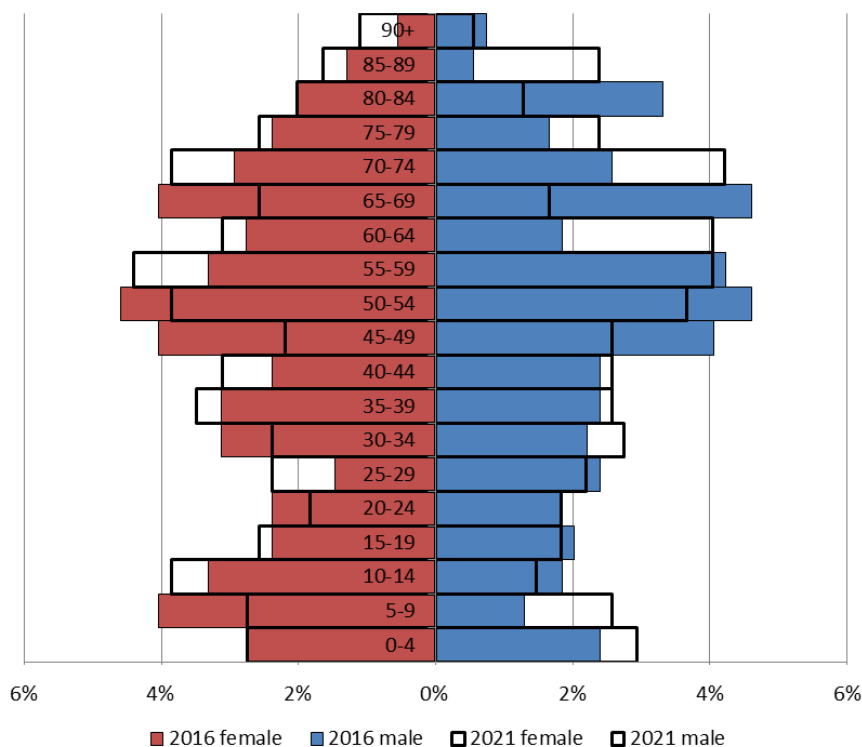
Young adults (20-39) currently make up 19.0% of the parish's population; this is expected to rise slightly to 19.4% by 2021.

Middle aged residents (40-64) currently account for 34.3% of Tangley's population; this is expected to fall slightly to 33.6% by 2021.

Those **aged 65 and over** make up 26.7% of the parish's population; this is expected to fall slightly to 26.2% by 2021.

Those **aged 85 and over** currently represent 3.1% of the population; this is expected to rise to 5.7% by 2021.

Age of parish population



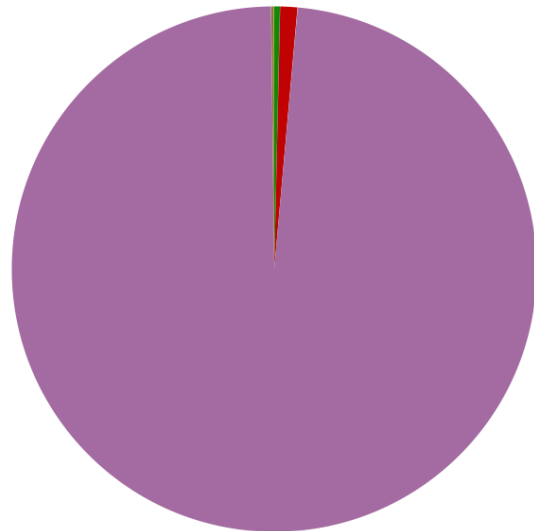
Ethnicity

The largest ethnic group in Tangley is “White” at 98.4% of the parish's population. That compares with a figure of 95.9% for Test Valley as a whole and 95.0% for Hampshire.

The second largest ethnic group (1.1%) is “Mixed/multiple ethnicity”. That compares with 1.3% for Test Valley as a whole and 1.4% for Hampshire.

Residents by ethnicity (count)

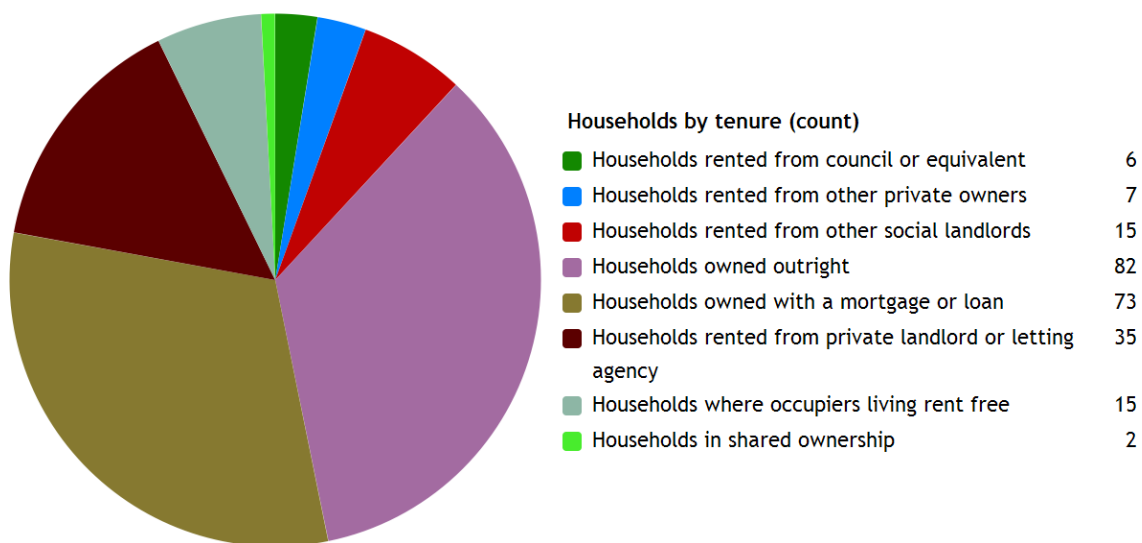
Residents who are Asian/Asian British	2
Residents who are Black/African/Caribbean/Black British	0
Residents who are Mixed/multiple ethnic groups	6
Residents who are White	548
Residents who are Other ethnic group	1



Powered by esd

Households

Tangley parish has **235 households**, which represent 0.5% of Test Valley's 47,626 households. The household split by tenure is shown below (tenure refers to the financial arrangements under which a home is occupied).

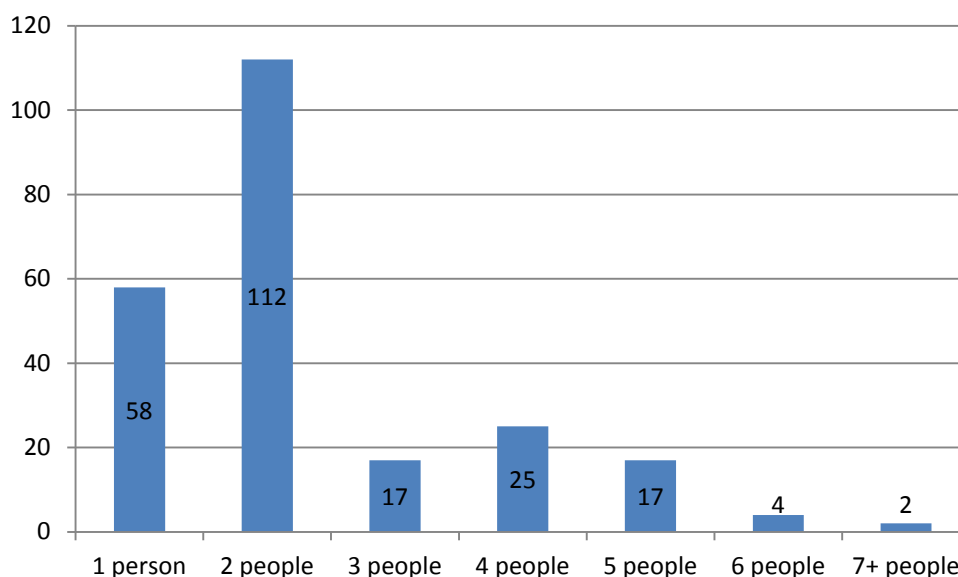


Powered by esd

The majority of properties (66.0%) are **owned by those who live in them**. This is lower than the Test Valley average of 70.4%.

17.9% of Tangley households are **privately rented**, and 8.9% are **socially rented**. This compares to 12.9% and 14.4% respectively across Test Valley.

Households by number of residents



47.7% of Tangley's households are occupied by two people, and 24.7% by one person. 27.7% of the parish's households are occupied by more than two people.

Tangley has 26 households with **dependent children aged 0 to 4**. That represents 11.1% of the parish's households.

56 households in the parish have **dependent children of all ages**. That represents 23.8% of the parish's households.

House prices

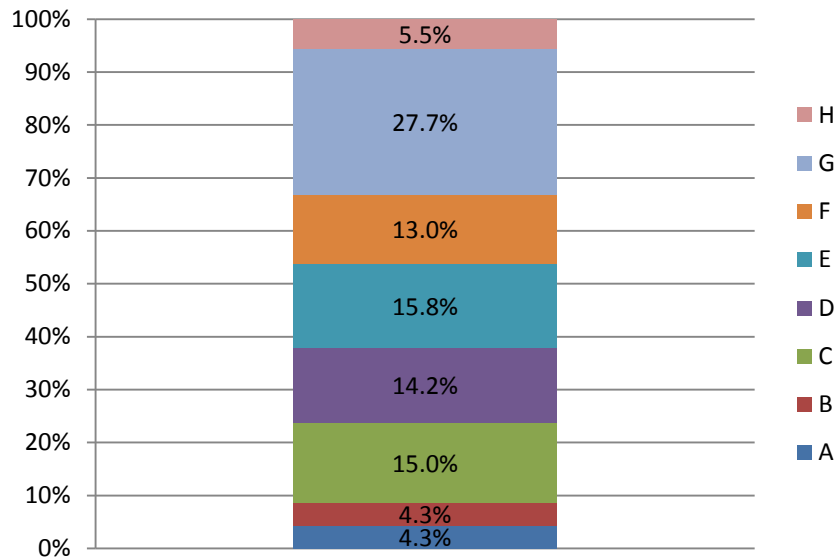
According to Zoopla, the average house price in Tangley (as of March 2016) is **£738,520**. This has increased by 20.4% in the last five years.

According to Zoopla, the average house price in Hatherden (as of March 2016) is **£1,075,912**. This has increased by 20.4% in the last five years.

It is estimated that **38.2% of households in north rural Test Valley cannot afford to buy a private property**. The central rural area includes the wards of Bourne Valley, Amport, Anna, Harewood, Over Wallop, and Penton Bellinger.

Council Tax Bands

Properties by Council Tax Band



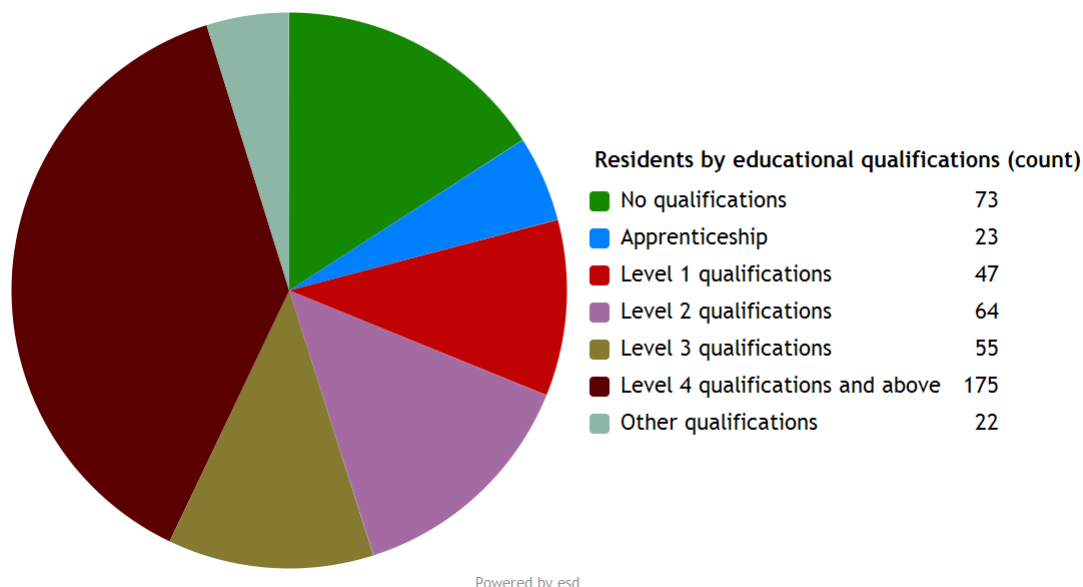
8.6% of Tangley properties are at the **lower** end of the property market (Bands A and B). This compares to 22.2% for Test Valley as a whole.

45.0% of the parish's properties are in the **middle** range of the property market (Bands C to E). This compares to 60.8% across the whole borough.

45.7% of Tangley's properties are at the **higher** end of the property market (Bands F to H). This compares to 17.1% of all Test Valley properties.

Education

31.4% of Tangley's residents have achieved **level 4 qualifications** and above compared to 30.5% in Test Valley as a whole. 13.1% of Tangley's residents have **no qualifications** compared to 18.4% in Test Valley.



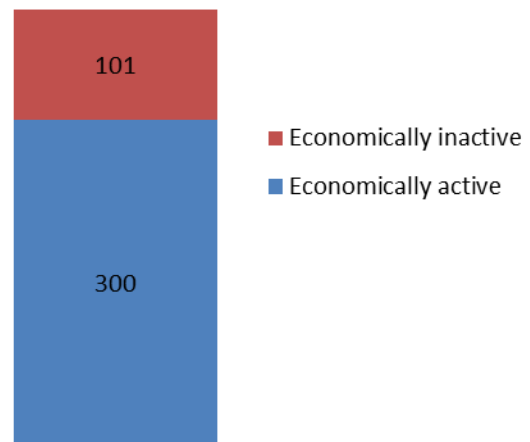
No qualifications	No academic or professional qualifications.
Level 1	1+O level passes, 1+CSE/GCSE any grades, NVQ level 1, Basic/Essential skills, NVQ Level 1.
Level 2	5+O level passes, 5+GCSEs (grades A*-C), 1 A level, 2-3 AS levels, City and Guilds Craft, NVQ level 2.
Level 3	2+A levels, Higher School certificate, NVQ level 3, City and Guilds Advanced Craft, BTEC National.
Level 4/5	Degree (e.g. BA, BSc) higher degree (e.g. MA, PhD, PGCE), NVQ levels 4 and 5, qualified teacher, nurse or accountant status, BTEC Higher.
Other qualification	Level unknown, vocational/work-related qualifications, foreign qualifications.

Employment

74.8% of Tangley's residents aged 16-74 are **economically active**, compared to 73.4% of Test Valley residents. This includes people in full-, part- and self-employment, those who are actively seeking a job, and full-time students.

The remaining 25.2% of residents aged 16-74 are **economically inactive**, compared to 26.6% of Test Valley residents. This includes people who are retired, long-term sick or disabled, or who look after the home and family.

Economic activity (count)

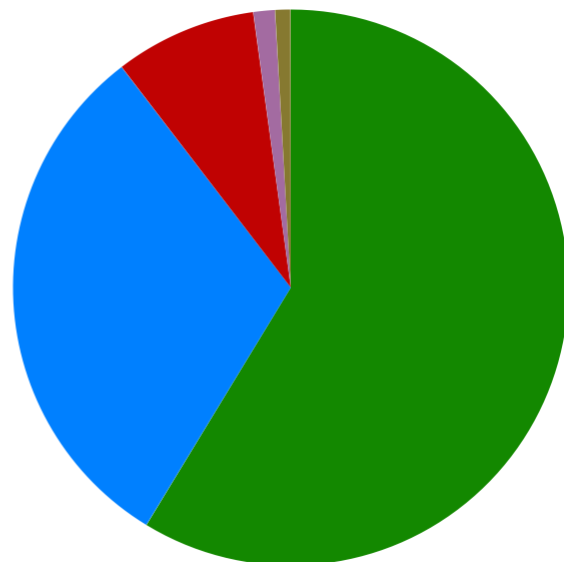


Health

Tangley has 7 (1.3%) residents that report being in **bad health** and 5 (0.9%) residents that report being in **very bad health**.

Residents by level of health (count)

Very good health	327
Good health	172
Fair health	46
Bad health	7
Very bad health	5



Powered by esd

Community plans

Details of any community planning exercises your parish is undertaking can be added here. Please get in touch with the Policy Team at the email address below and we will be more than happy to add information at your request.

Local facilities

Food stores	None
Other shops	Oaktrack Smallholding
Primary schools	Hatherden Church of England school
Secondary schools	None
Health facilities	None
Leisure facilities	Multi-use games area
Public houses	The Fox Inn The Cricketers Arms The Old Bell and Crown The Hare and Hounds
Community facilities	Village hall
Churches	St Thomas of Canterbury - Tangle Christ Church - Hatherden
Local recycling centres	The Fox Inn The Old Bell and Crown The Hare and Hounds

Public and community transport

Andover Cango C6 bus service

A bus service between Andover and Vernham Dean stopping at select villages including Tanglely.

More information can be found here:

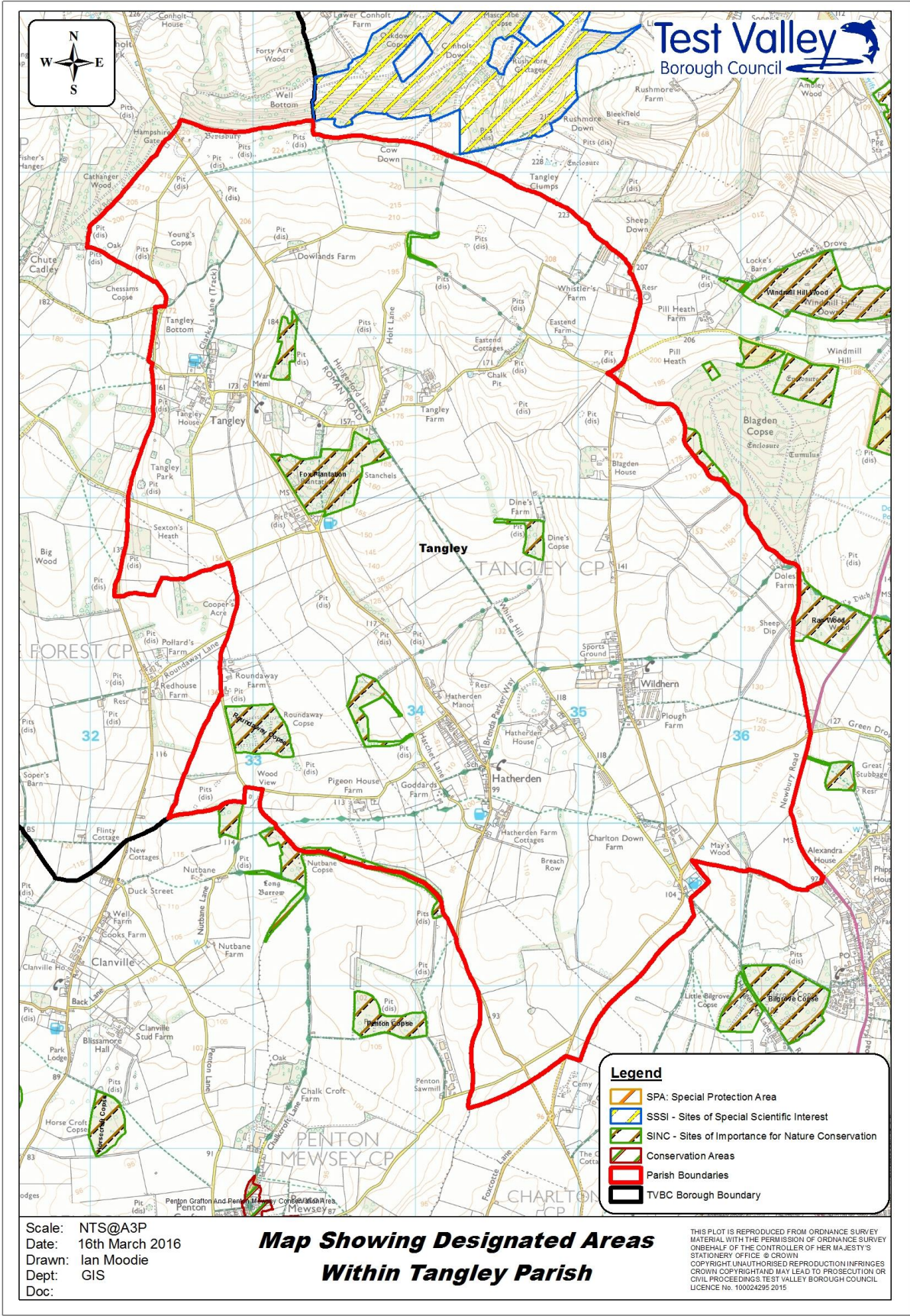
http://www3.hants.gov.uk/c6_cango_timetable_01-12-2015_hf000010525358.pdf

Wheels to Work

Wheels to Work is a moped loan scheme and is designed for people who do not have access to public or private transport to get them to a job, vocational training or to attend interviews. A moped can be loaned for 3 to 12 months depending on circumstances. The scheme is aimed at people between the ages of 16-25.

More information on the scheme can be found at:

<http://www3.hants.gov.uk/passengertransport/communitytransport/wheels-to-work.htm>



Additional information

The information in this profile has been prepared by Test Valley Borough Council's Policy Team in partnership with the Local Government Association. If you would like further information, please contact the Policy Team on 01264 368000 or policyteam@testvalley.gov.uk, and we will be happy to work with you to provide a more detailed profile.

This profile contains key information for you to use to contribute to the development of a Neighbourhood Plan or other community project. If you know of any additional information about the parish that may be of use (for example, information on local facilities) please get in touch and we will endeavor to work with you to add to or change the profile.

Please note that most of the data featured in this profile is taken from the 2011 Census, whilst the population data is taken from Hampshire County Council's 2016 Small Area Population Forecast. Therefore, there is some discrepancy in population figures.