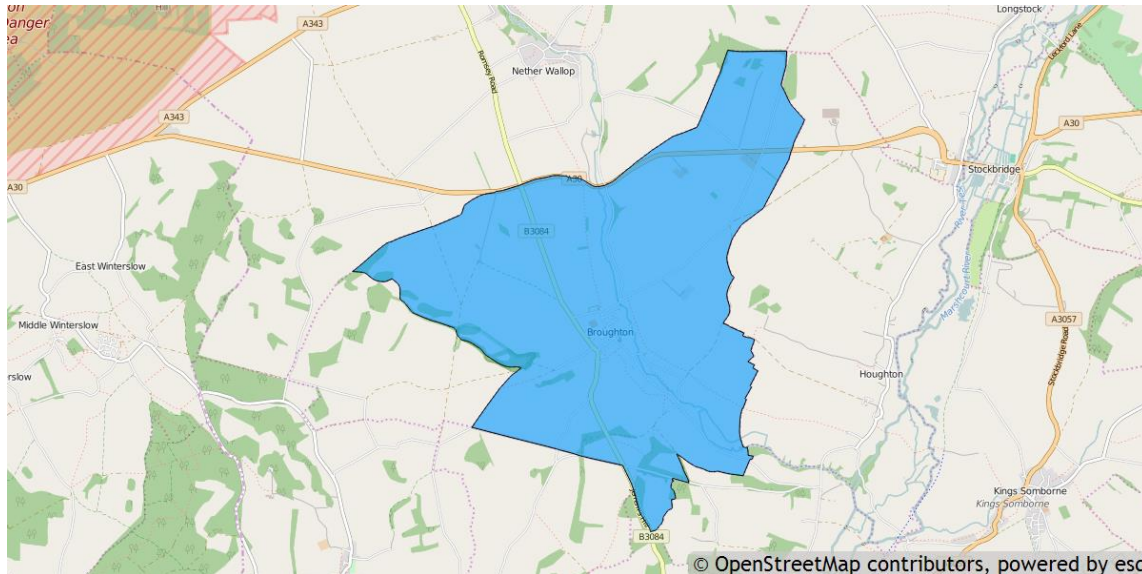


Broughton parish profile

This profile provides a summary of the latest available information on the demographic make-up of the Braishfield parish within Test Valley. It looks at information on topics such as the population structure, economic, housing, health and educational information for the parish.

Broughton is one of the 59 parishes in Test Valley. It has an area of 1,532 hectares which represents 2.4% of the total area of Test Valley.



Elected representatives

Hampshire County Councillor

Cllr Andrew Gibson

Ruths Cottage
Rookery Lane
Broughton
SO20 8AZ

Home: 01264 861138
Office: 01264 861087
Mobile: 07802 878248
Email: andrew.gibson@hants.gov.uk

Test Valley Borough Councillors

Cllr Peter Boulton

Brightside Farm
Broughton
Stockbridge
Hampshire
SO20 8BX
Home: 01794 301212
Mobile: 07527 075219
Email: cllrboulton@testvalley.gov.uk

Cllr Daniel Busk

Eveley Farm
Houghton
Stockbridge
Hampshire
SO20 6SA
Home: 01794 388389
Mobile: 07752 070225
Email: cllrdbusk@testvalley.gov.uk

Broughton Parish Council Chairman**Cllr Graham Cowley**

Ruths Cottage
Rookery Lane
Broughton
SO20 8AZ

Tel: 01794 301502

Email: graham@rookerylane.plus.com

Broughton Parish Council Clerk**Melanie Wathen**

Email: parishclerk@broughton-hants.net

Residents

The estimated 2016 population of Broughton parish is 1,009. This is expected to decrease to 1,000 by 2021 (a decrease of 0.9%).

Broughton's resident population is 49.6% female and 50.4% male.

Young people (0-19) currently make up 18.9% of Broughton's population; this is expected to fall to 17.7% by 2021.

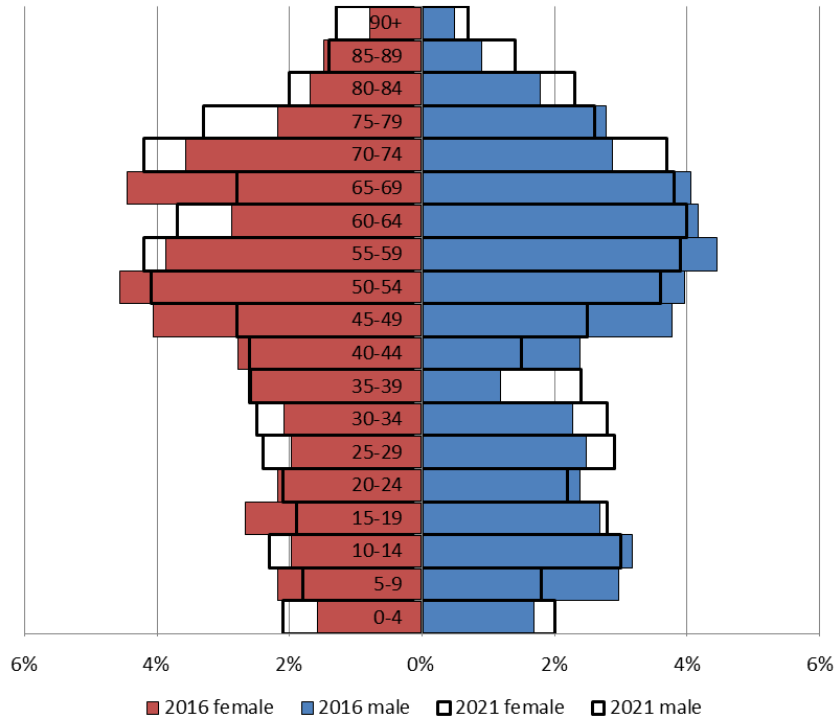
Young adults (20-39) currently make up 17.1% of the parish's population; this is expected to rise to 19.9% by 2021.

Middle aged residents (40-64) currently account for 36.9% of Broughton's population; this is expected to fall to 32.9% by 2021.

Those **aged 65 and over** make up 27.1% of the parish's population; this is expected to rise to 29.5% by 2021.

Those **aged 85 and over** currently represent 3.7% of the population; this is expected to rise to 4.8% by 2021.

Age of parish population



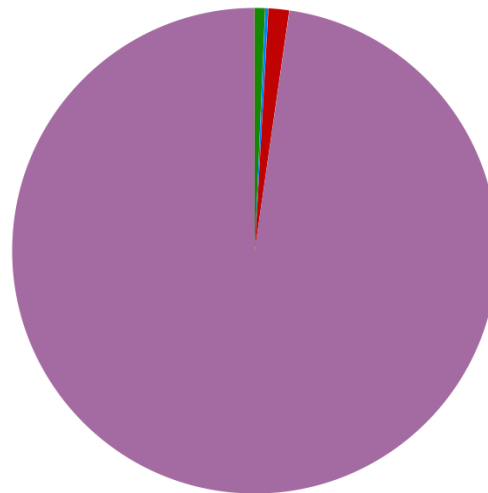
Ethnicity

The largest ethnic group in Broughton is “White” at 97.7% of the parish's population. That compares with a figure of 95.9% for Test Valley as a whole and 95.0% for Hampshire.

The second largest ethnic group (1.4%) is “Mixed/multiple ethnic groups”. That compares with 1.3% for Test Valley as a whole and 1.4% for Hampshire.

Residents by ethnicity (count)

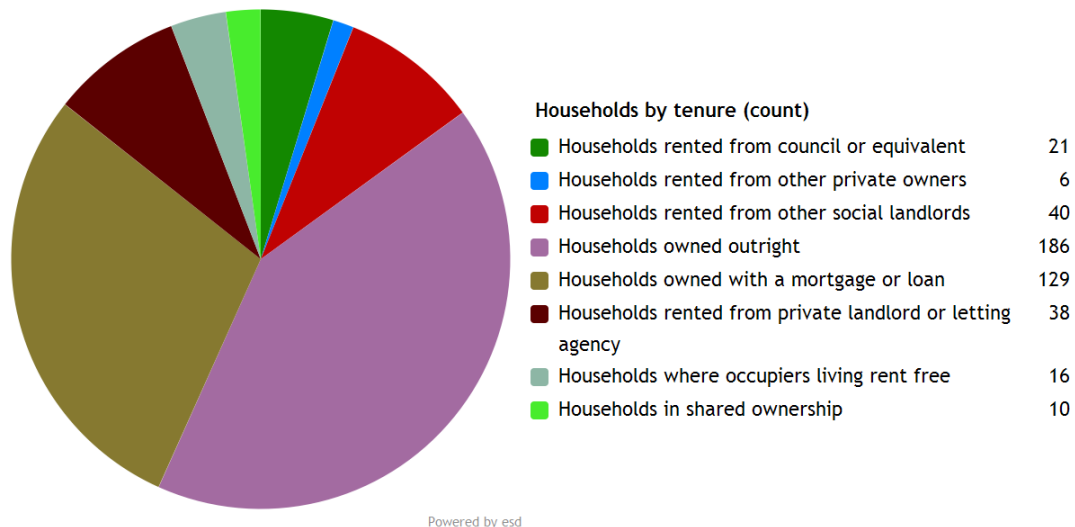
Residents who are Asian/Asian British	7
Residents who are Black/African/Caribbean/Black British	2
Residents who are Mixed/multiple ethnic groups	14
Residents who are White	980
Residents who are Other ethnic group	0



Powered by esd

Households

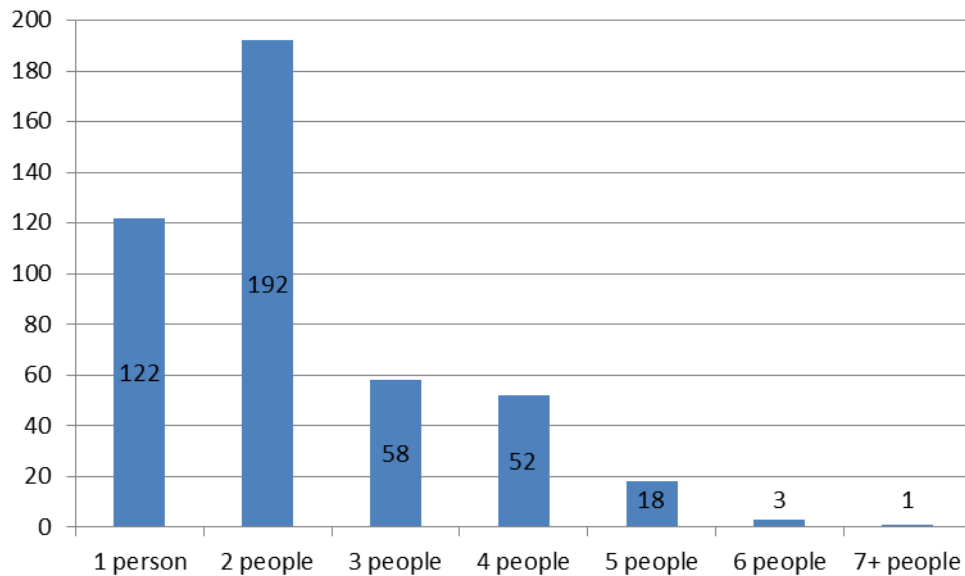
Broughton parish has **446 households**, which represent 0.9% of Test Valley's 47,626 households. The household split by tenure is shown below (tenure refers to the financial arrangements under which a home is occupied).



The majority of properties (70.6%) are **owned by those who live in them**. This is only slightly higher than the Test Valley average of 70.4%.

9.9% of Broughton households are **privately rented**, and 13.7% are **socially rented**. This compares to 12.9% and 14.4% respectively across Test Valley.

Households by number of residents



43.0% of Broughton's households are occupied by two people, and 27.4% by one person. 29.6% of the parish's households are occupied by more than two people.

Broughton has 31 households with **dependent children aged 0 to 4**. That represents 7.0% of the parish's households.

106 households in the parish have **dependent children of all ages**. That represents 23.8% of the parish's households.

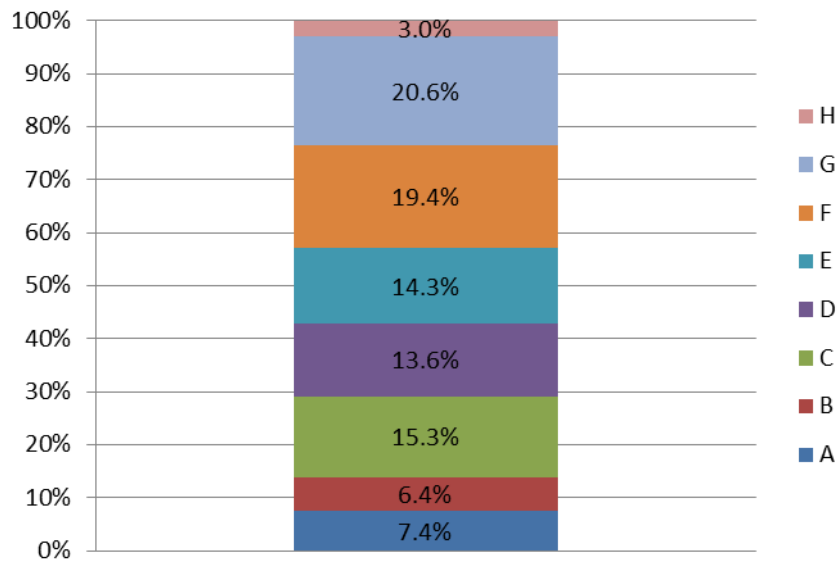
House prices

According to Zoopla, the average house price in Broughton (as of September 2016) is **£707,915**. This has increased by 17.4% in the last five years.

It is estimated that **39.4% of households in central rural Test Valley cannot afford to buy a private property**. The central rural area includes the wards of Broughton and Stockbridge, Blackwater, Dun Valley, and Stockbridge and Michelmersh.

Council Tax Bands

Properties by Council Tax Band



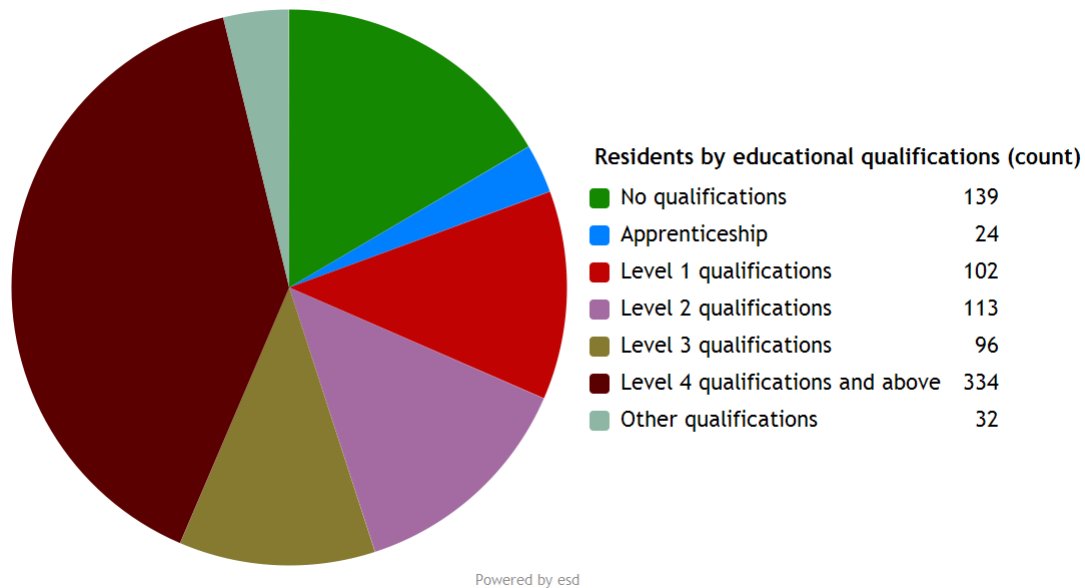
13.8% of Broughton properties are at the **lower** end of the property market (Bands A and B). This compares to 22.2% for Test Valley as a whole.

43.2% of the parish's properties are in the **middle** range of the property market (Bands C to E). This compares to 60.8% across the whole borough.

43.0% of Broughton's properties are at the **higher** end of the property market (Bands F to H). This compares to 17.1% of all Test Valley properties.

Education

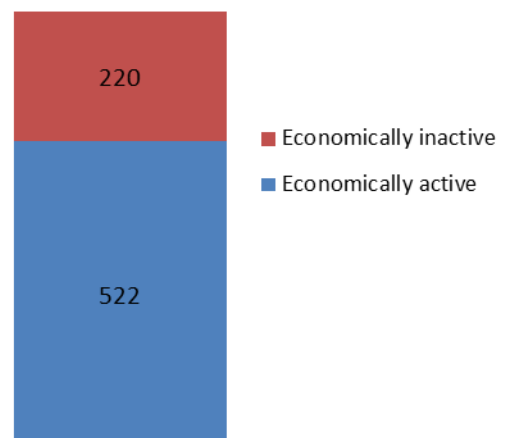
39.8% of Broughton's residents have achieved **level 4 qualifications** and above compared to 30.5% in Test Valley as a whole. 16.6% of Broughton's residents have **no qualifications** compared to 18.4% in Test Valley.



No qualifications	No academic or professional qualifications.
Level 1	1+O level passes, 1+CSE/GCSE any grades, NVQ level 1, Basic/Essential skills, NVQ Level 1.
Level 2	5+O level passes, 5+GCSEs (grades A*-C), 1 A level, 2-3 AS levels, City and Guilds Craft, NVQ level 2.
Level 3	2+A levels, Higher School Certificate, NVQ level 3, City and Guilds Advanced Craft, BTEC National.
Level 4/5	Degree (e.g. BA, BSc) higher degree (e.g. MA, PhD, PGCE), NVQ levels 4 and 5, qualified teacher, nurse or accountant status, BTEC Higher.
Other qualification	Level unknown, vocational/work-related qualifications, foreign qualifications.

Employment

Economic activity (count)

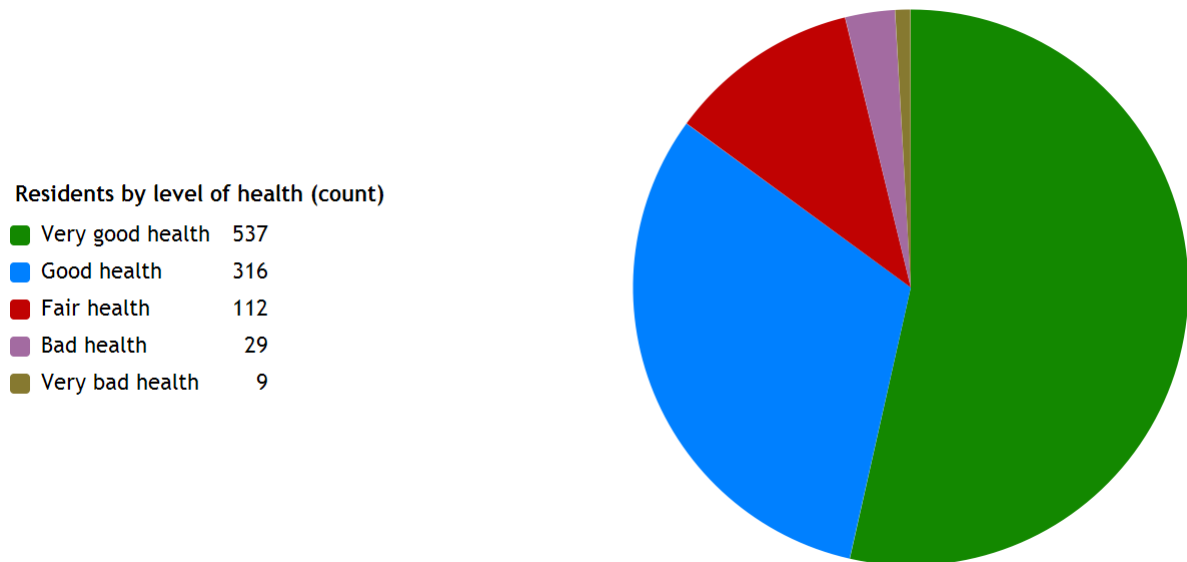


70.4% of Broughton residents aged 16-74 are **economically active**, compared to 73.4% of Test Valley residents. This includes people in full, part and self-employment, those who are actively seeking a job, and full-time students.

The remaining 29.6% of residents aged 16-74 are **economically inactive**, compared to 26.6% of Test Valley residents. This includes people who are retired, long-term sick or disabled, or who look after the home and family.

Health

Broughton has 29 (2.9%) residents that report being in **bad health** and 9 (0.9%) residents that report being in **very bad health**.



Community plans

Broughton has a **Village Design Statement** which was adopted by Test Valley Borough Council in April 2004 as Supplementary Planning Guidance. The design statement provides a description of the natural and man-made features of the village of Broughton that are regarded by the members of the community as particularly distinctive. The document provides a guide to ensure that future development and

change is managed to respect and preserve the character and distinctiveness of the village. It should thus contribute positively to protecting and enhancing the special nature and qualities of the community that is Broughton today.

This document is available on the Council's website at the following page:
<http://bit.ly/2es3toi>

Broughton has a **Parish Plan**, which is a document that sets out what is important to the local community. It was published in 2010, and covers a wide range of issues including social, economic and environmental issues, and can be found online:

<http://bit.ly/2es7d9d>

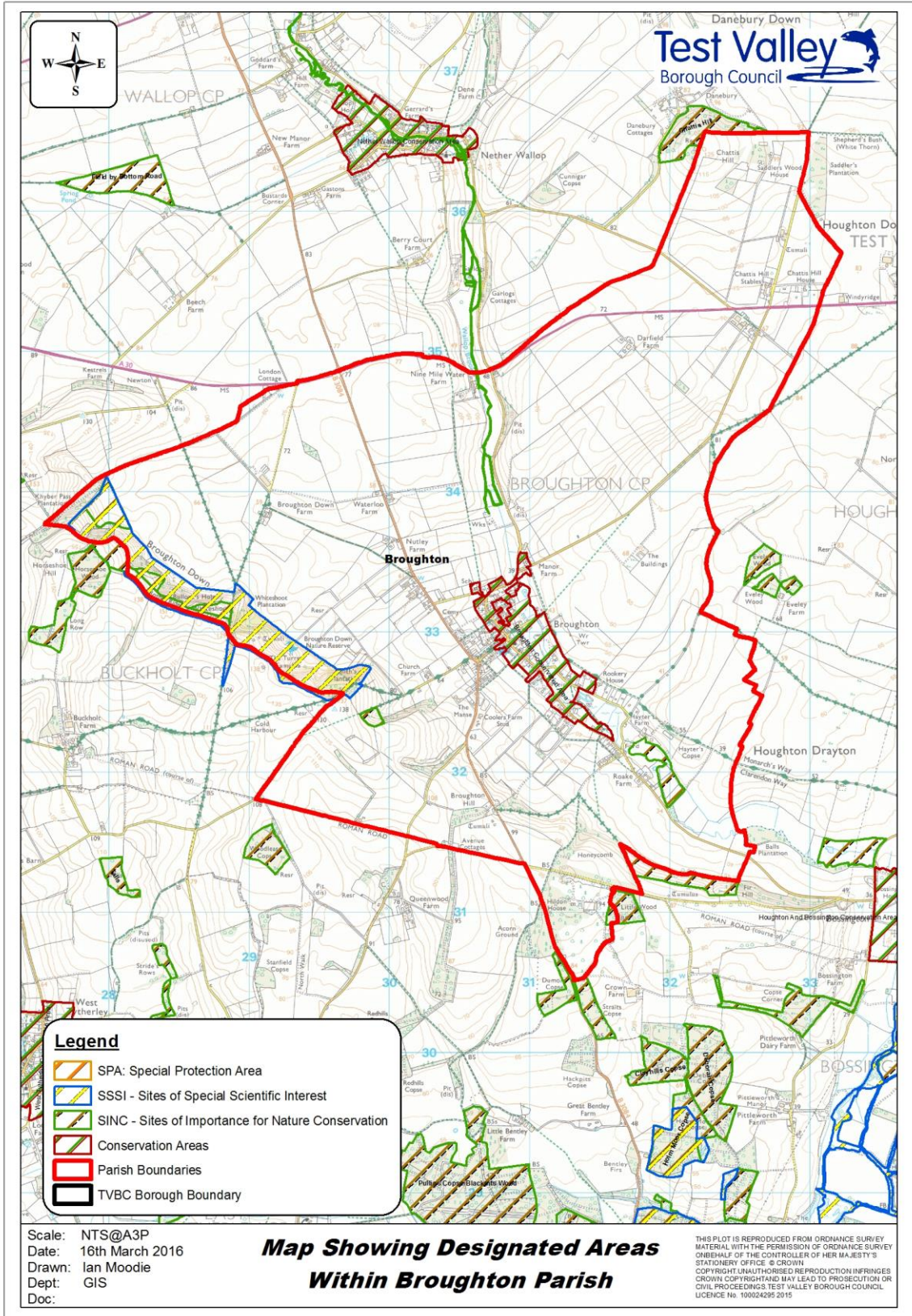
Details of any community planning exercises your parish is undertaking can be added here. Please get in touch with the Policy Team at the email address below and we will be more than happy to add information at your request.

Local facilities

Food stores	Yes
Other shops	Post Office
Primary schools	Broughton Primary School
Secondary schools	None
Health facilities	The Stockbridge Practice
Leisure facilities	Sportsfield Skateboard ramp Children's play area
Public houses	The Greyhound The Tally Ho!
Community facilities	Broughton Village Hall
Churches	St Mary's Church
Local recycling centres	Broughton Village Hall

Public and community transport

<p>Broughton Village Bus</p> <p>A community bus service that takes residents to Andover, Romsey, Salisbury, Southampton and Winchester.</p> <p>More information about the routes and the timetable can be found online at:</p> <p>http://bit.ly/2eAoQ6w</p>	<p>Broughton Good Neighbours</p> <p>Broughton Good neighbours is a voluntary car scheme which takes residents around test valley for shopping, GP, hospital, dental, optician and leisure appointments.</p> <p>More information can be found online at:</p> <p>http://bit.ly/2eew7gs</p>
<p>Further community transport information for Test Valley can be found on Hampshire County Council's website:</p> <p>http://bit.ly/2ecJuLK</p>	



Additional information

The information in this profile has been prepared by Test Valley Borough Council's Policy Team in partnership with the Local Government Association. If you would like further information, please contact the Policy Team on 01264 368000 or policyteam@testvalley.gov.uk, and we will be happy to work with you to provide a more detailed profile.

This profile contains key information for you to use to contribute to the development of a Neighbourhood Plan or other community project. If you know of any additional information about the parish that may be of use (for example, information on local facilities) please get in touch and we will endeavor to work with you to add to or change the profile.

Please note that most of the data featured in this profile is taken from the 2011 Census, whilst the population data is taken from Hampshire County Council's 2016 Small Area Population Forecast. Therefore, there is some discrepancy in population figures.