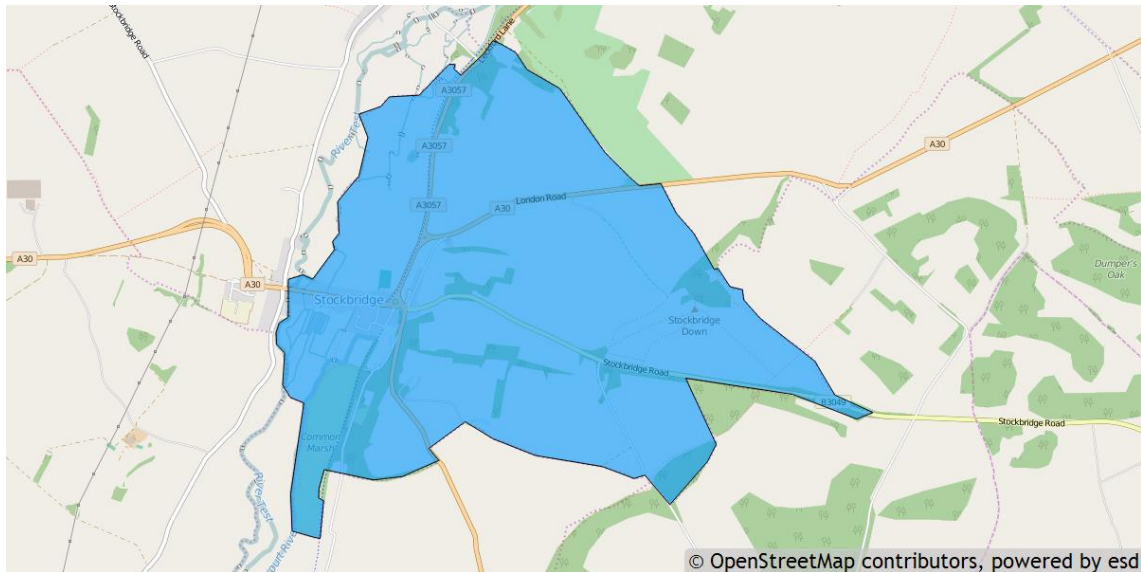


## Stockbridge parish profile

This profile provides a summary of the latest available information on the demographic make-up of the Stockbridge parish within Test Valley. It looks at information on topics such as the population structure, economic, housing, health and educational information for the parish.

Stockbridge is one of the 59 parishes in Test Valley. It has an area of 587 hectares which represents 0.9% of the total area of Test Valley.



### Elected representatives

<p><b>Hampshire County Councillor</b></p> <p><b>Cllr Andrew Gibson</b> Home: 01264 861138 Office: 01264 861087 Mobile: 07802 878248 Email: <a href="mailto:andrew.gibson@hants.gov.uk">andrew.gibson@hants.gov.uk</a></p>	<p><b>Test Valley Borough Councillors</b></p> <p><b>Cllr Peter Boulton</b> Home: 01794 301212 Mobile: 07527 075219 Email: <a href="mailto:cllrpboulton@testvalley.gov.uk">cllrpboulton@testvalley.gov.uk</a></p> <p><b>Cllr Daniel Busk</b> Home: 01794 388389 Mobile: 07752 070225 Email: <a href="mailto:cllrdbusk@testvalley.gov.uk">cllrdbusk@testvalley.gov.uk</a></p>
<p><b>Stockbridge Parish Council Chairman</b></p> <p><b>Cllr Richard Foord</b> Home: 01264 810648 Email: <a href="mailto:jmfoordandson@tiscali.co.uk">jmfoordandson@tiscali.co.uk</a></p>	<p><b>Stockbridge Parish Council Clerk</b></p> <p><b>Mr Michael Mortimer</b> Mobile: 07899 803291 Email: <a href="mailto:stockbridgeparishcouncil@gmail.com">stockbridgeparishcouncil@gmail.com</a></p>

## Residents

The estimated 2016 population of Stockbridge parish is 559. This is expected to increase slightly by 2021 to 562 (a rise of 0.5%).

Stockbridge's resident population is 50.8% female and 49.2% male.

**Young people (0-19)** currently make up 13.6% of Stockbridge's population; this is expected to increase slightly to 14.2% by 2021.

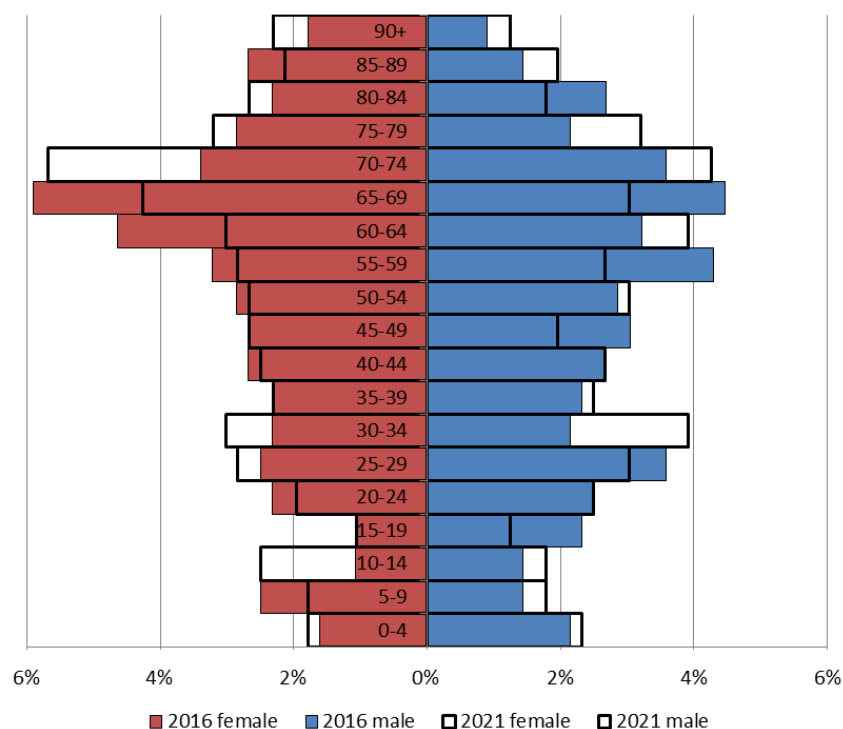
**Young adults (20-39)** currently make up 20.0% of the parish's population; this is expected to rise to 22.1% by 2021.

**Middle aged residents (40-64)** currently account for 32.2% of Stockbridge's population; this is expected to fall to 27.9% by 2021.

Those **aged 65 and over** make up 34.2% of the parish's population; this is expected to rise to 35.8% by 2021.

Those **aged 85 and over** currently represent 6.8% of the population; this is expected to increase slightly to 7.7% by 2021.

### Age of parish population



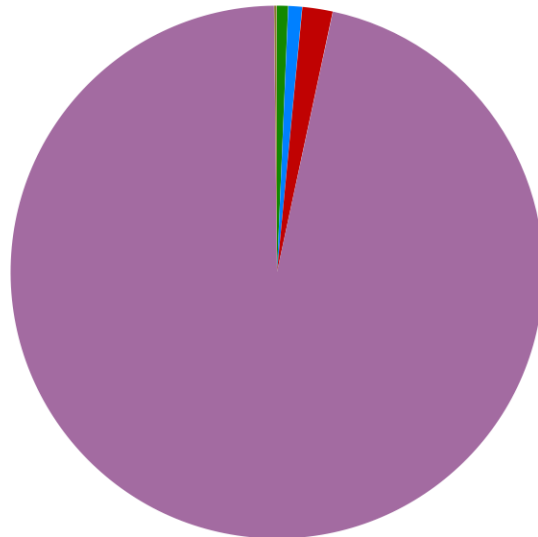
## Ethnicity

The largest ethnic group in Stockbridge is “White” at 96.5% of the parish's population. That compares with a figure of 95.9% for Test Valley as a whole and 95.0% for Hampshire.

The second largest ethnic group (1.9%) is “Mixed/multiple ethnic groups”. That compares with 1.3% for Test Valley as a whole and 1.4% for Hampshire.

### Residents by ethnicity (count)

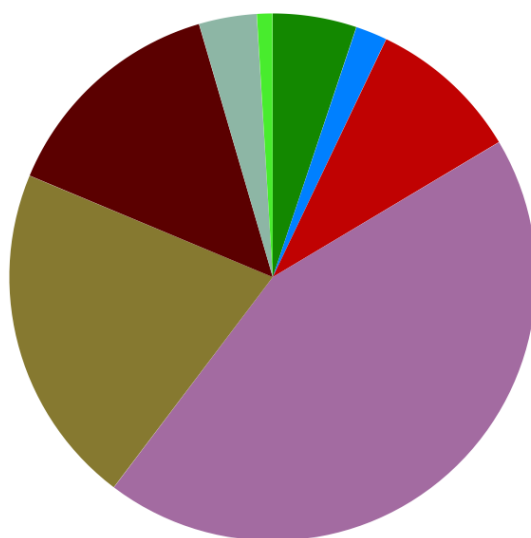
Residents who are Asian/Asian British	4
Residents who are Black/African/Caribbean/Black British	5
Residents who are Mixed/multiple ethnic groups	11
Residents who are White	571
Residents who are Other ethnic group	1



Powered by esd

## Households

Stockbridge parish has **310 households**, which represent 0.7% of Test Valley's 47,626 households. The household split by tenure is shown below (tenure refers to the financial arrangements under which a home is occupied).



### Households by tenure (count)

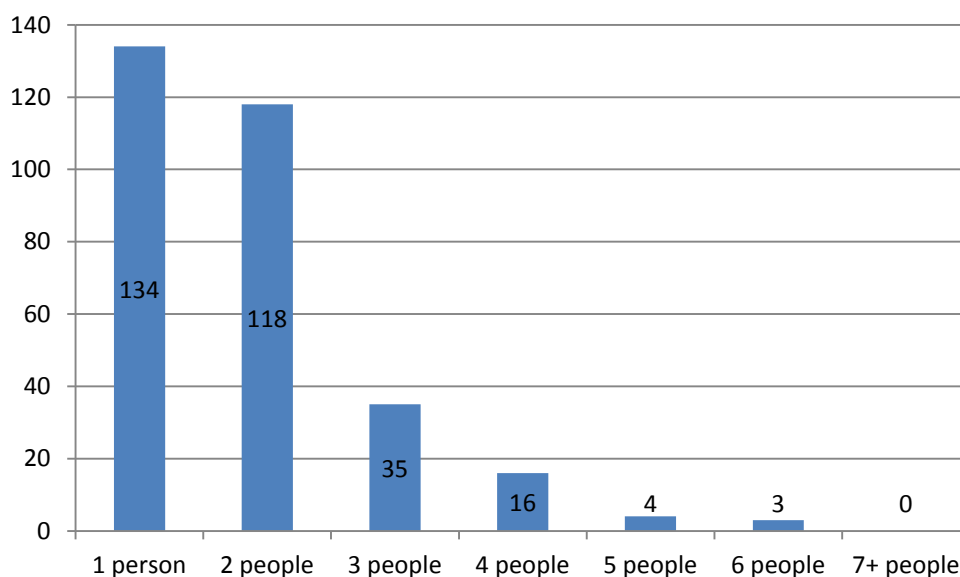
Households rented from council or equivalent	16
Households rented from other private owners	6
Households rented from other social landlords	29
Households owned outright	136
Households owned with a mortgage or loan	65
Households rented from private landlord or letting agency	44
Households where occupiers living rent free	11
Households in shared ownership	3

Powered by esd

The majority of properties (64.8%) are **owned by those who live in them**. This is lower than the Test Valley average of 70.4%.

16.1% of Stockbridge households are **privately rented**, and 14.5% are **socially rented**. This compares to 12.9% and 14.4% respectively across Test Valley.

### Households by number of residents



43.2% of Stockbridge's households are occupied by one person, and 38.1% by two people. 18.7% of the parish's households are occupied by more than two people.

Stockbridge has 13 households with **dependent children aged 0 to 4**. That represents 4.2% of the parish's households.

45 households in the parish have **dependent children of all ages**. That represents 14.5% of the parish's households.

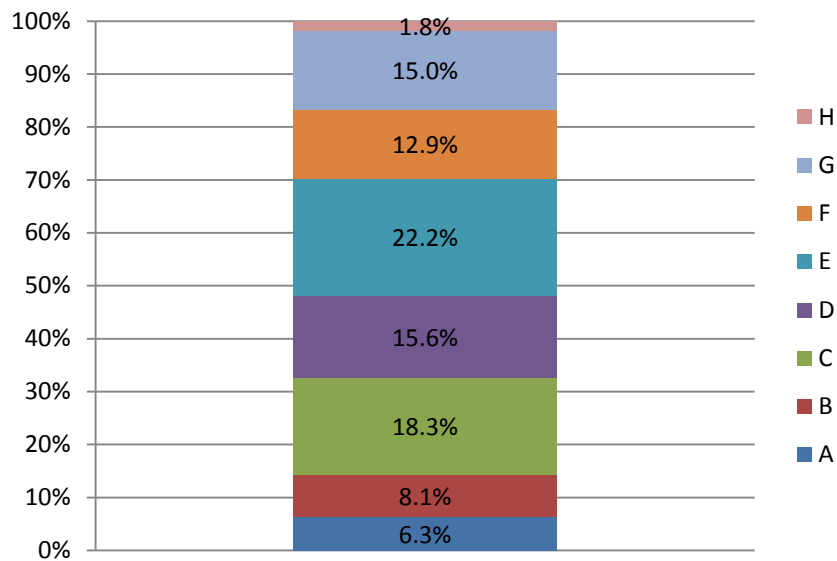
### House prices

According to Zoopla, the average house price in Stockbridge (as of March 2016) is **£661,480**. This has increased by 21.0% in the last five years.

It is estimated that **39.4% of households in central rural Test Valley cannot afford to buy a private property**. The central rural area includes the wards of Broughton and Stockbridge, Blackwater, Dun Valley, and Stockbridge and Michelmersh.

## Council Tax Bands

### Properties by Council Tax Band



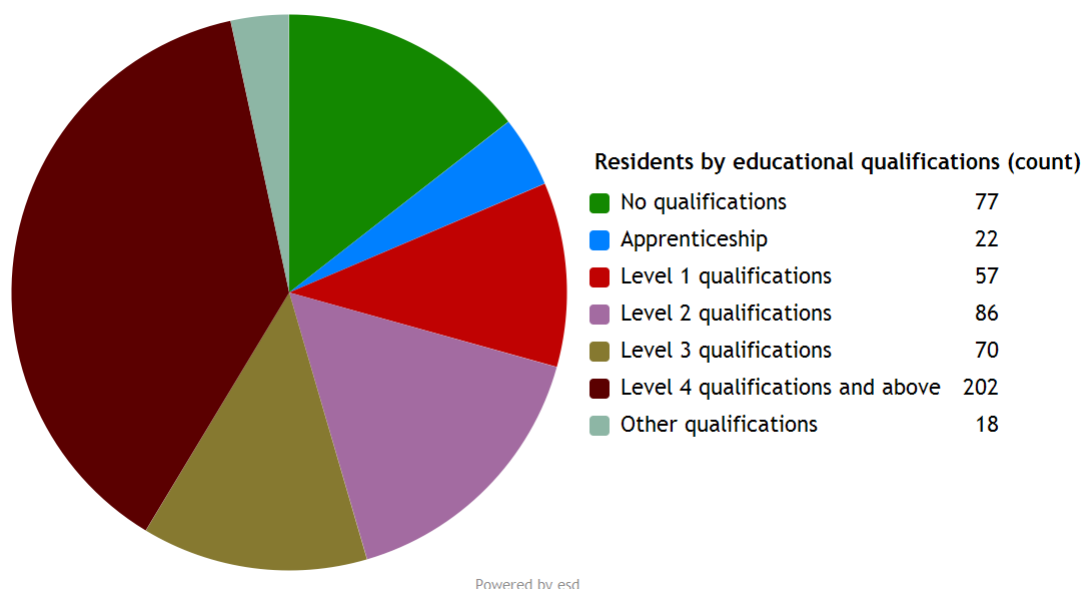
14.4% of Stockbridge properties are at the **lower** end of the property market (Bands A and B). This compares to 22.2% for Test Valley as a whole.

56.1% of the parish's properties are in the **middle** range of the property market (Bands C to E). This compares to 60.8% across the whole borough.

29.7% of Stockbridge's properties are at the **higher** end of the property market (Bands F to H). This compares to 17.1% of all Test Valley properties.

## Education

34.1% of Stockbridge's residents have achieved **level 4 qualifications** and above compared to 30.5% in Test Valley as a whole. 13.0% of Stockbridge's residents have **no qualifications** compared to 18.4% in Test Valley.



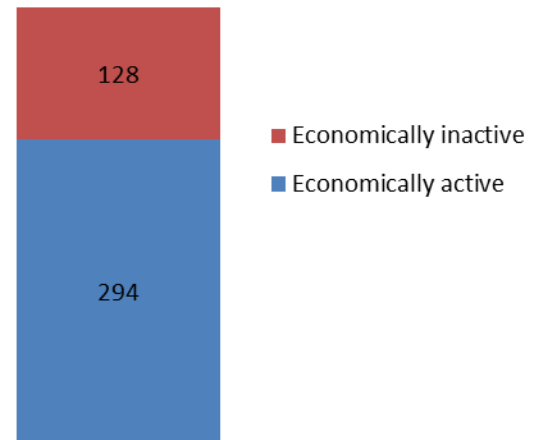
No qualifications	No academic or professional qualifications.
Level 1	1+O level passes, 1+CSE/GCSE any grades, NVQ level 1, Basic/Essential skills, NVQ Level 1.
Level 2	5+O level passes, 5+GCSEs (grades A*-C), 1 A level, 2-3 AS levels, City and Guilds Craft, NVQ level 2.
Level 3	2+A levels, Higher School Certificate, NVQ level 3, City and Guilds Advanced Craft, BTEC National.
Level 4/5	Degree (e.g. BA, BSc) higher degree (e.g. MA, PhD, PGCE), NVQ levels 4 and 5, qualified teacher, nurse or accountant status, BTEC Higher.
Other qualification	Level unknown, vocational/work-related qualifications, foreign qualifications.

## Employment

69.7% of Stockbridge residents aged 16-74 are **economically active**, compared to 73.4% of Test Valley residents. This includes people in full, part and self-employment, those who are actively seeking a job, and full-time students.

The remaining 30.3% of residents aged 16-74 are **economically inactive**, compared to 26.6% of Test Valley residents. This includes people who are retired, long-term sick or disabled, or who look after the home and family.

## Economic activity (count)

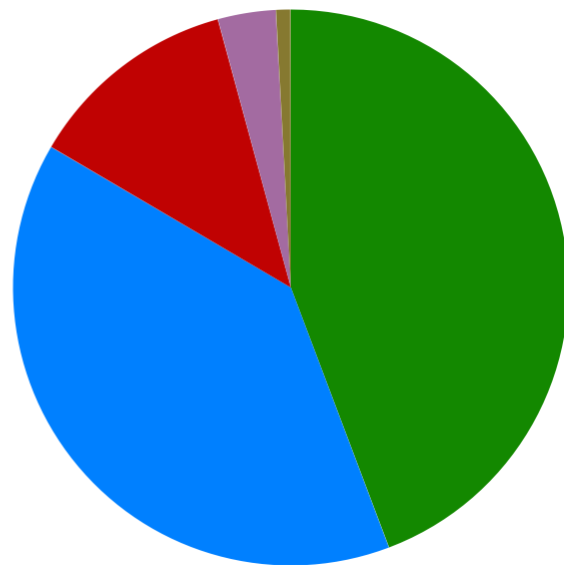


## Health

Stockbridge has 20 (3.4%) residents that report being in **bad health** and 5 (0.8%) residents that report being in **very bad health**.

### Residents by level of health (count)

Very good health	262
Good health	232
Fair health	73
Bad health	20
Very bad health	5



Powered by esd

## Community plans

Stockbridge has a **Village Design Statement** which was adopted by Test Valley Borough Council in April 2003 as Supplementary Planning Guidance.

The advisory document aims to draw attention to what is special about Stockbridge and to the features that give it a unique character. The aim is to give residents a say in the future of their village, to offer guidelines on conserving its particular qualities and addressing any current concerns, and to contribute towards the improvement of rural design in general.

This document is available on the Council's website at the following page:

<http://bit.ly/2dB4NHJ>

Details of any community planning exercises your parish is undertaking can be added here. Please get in touch with the Policy Team at the email address below and we will be more than happy to add information at your request.

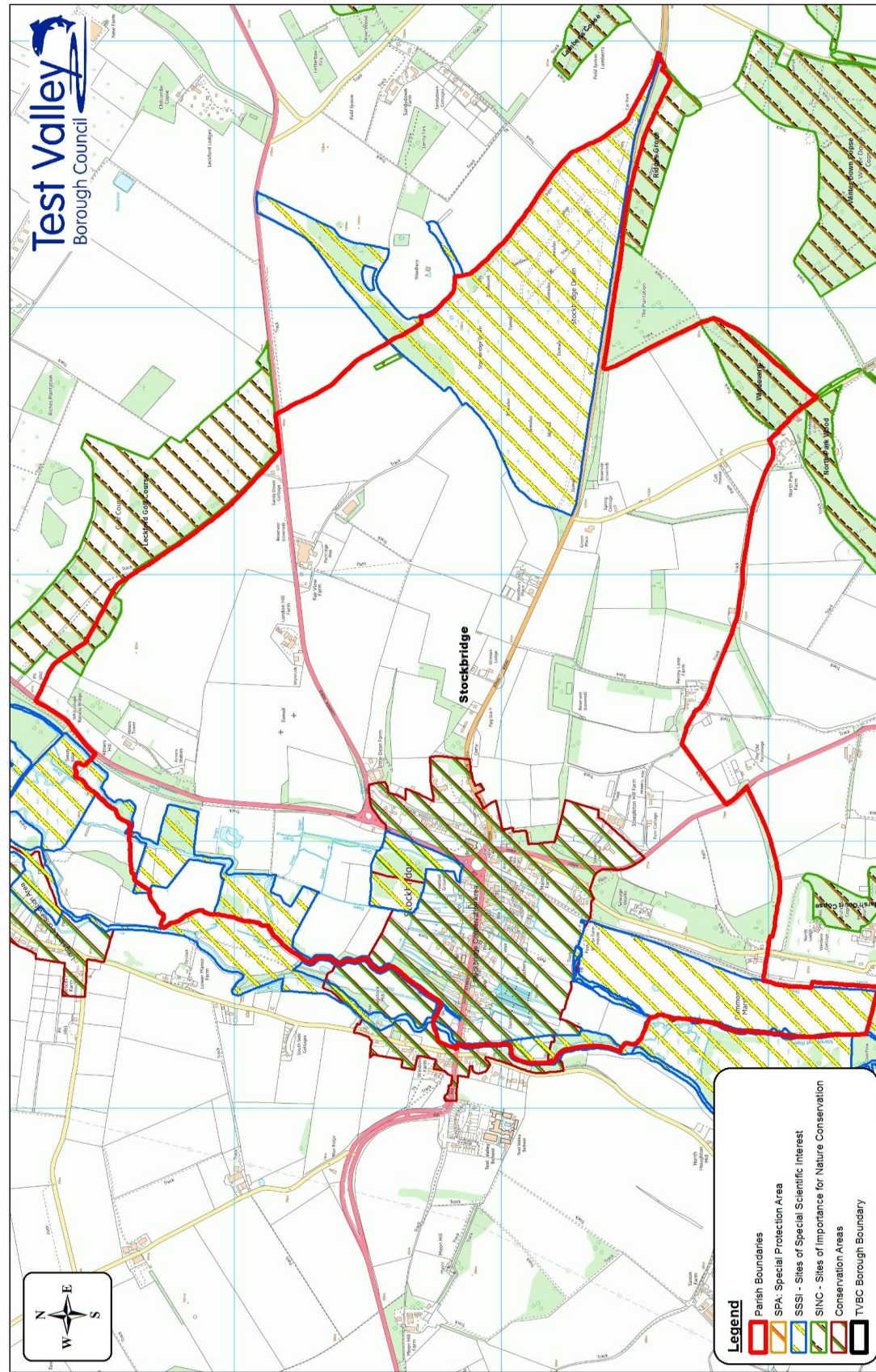
## Local facilities

<b>Food stores</b>	Yes
<b>Other shops</b>	Yes
<b>Primary schools</b>	Stockbridge Primary School
<b>Secondary schools</b>	Test Valley Secondary School
<b>Health facilities</b>	GP
<b>Leisure facilities</b>	Allotments Recreation ground
<b>Public houses</b>	The Vine Inn The Greyhound Inn The Three Cups The White Hart Inn The Grosvenor
<b>Community facilities</b>	Kent Hill Hall Scout Hut Town Hall
<b>Churches</b>	St Thomas More Church St Peter's Church
<b>Local recycling centres</b>	The White Hart Inn



## Public and community transport

<p><b>Wheelers 15 bus service</b></p> <p>A bus service between Andover and Stockbridge stopping at various villages in Northern Test Valley.</p> <p>More information can be found here:</p> <p><a href="http://bit.ly/2eADOs6">http://bit.ly/2eADOs6</a></p>	<p><b>Andover Dial-a-Ride</b></p> <p>Offers a weekly shopping trip for anyone who has difficulty using public transport or lives more than 400m from a bus stop.</p> <p>More information can be found here:</p> <p><a href="http://bit.ly/2ezKzud">http://bit.ly/2ezKzud</a></p>
<p><b>Stockbridge Neighbourcare</b></p> <p>A scheme based upon a volunteer driver who will take residents to GP and hospital appointments, shopping visits.</p> <p>More information can be found here:</p> <p><a href="http://bit.ly/2eJJgdq">http://bit.ly/2eJJgdq</a></p>	<p><b>Taxi share service 54</b></p> <p>Passengers must pre-book and are picked up from their local bus stop.</p> <p>Please phone 01962 846786</p> <p>More information can be found online at:</p> <p><a href="http://bit.ly/2edGDCp">http://bit.ly/2edGDCp</a></p>
<p>Further community transport information for Test Valley can be found on Hampshire County Council's website:</p> <p><a href="http://bit.ly/2ecJuLK">http://bit.ly/2ecJuLK</a></p>	



THIS PLOT IS REPRODUCED FROM ORDNANCE SURVEY  
SERIES 1000 AND IS THE PROPERTY OF THE  
STATIONARY OFFICE © CROWN  
COPYRIGHT UNAUTHORISED REPRODUCTION INFRINGES  
CROWN COPYRIGHT AND MAY LEAD TO PROSECUTION OR  
CIVIL LIABILITY. TEST VALLEY BOROUGH COUNCIL  
LICENCE NO. 100024295-2014

**Map Showing Designated Sites Within Stockbridge Parish**

**Legend**

- Parish Boundaries
- SPA: Special Protection Area
- SSSI - Sites of Special Scientific Interest
- SINC - Sites of Importance for Nature Conservation
- Conservation Areas
- TVBC Borough Boundary

Scale: NTS@A3L  
Date: 16th March 2016  
Drawn: Ian Moodle  
Dept: GIS  
Doc:

## **Additional information**

The information in this profile has been prepared by Test Valley Borough Council's Policy Team in partnership with the Local Government Association. If you would like further information, please contact the Policy Team on 01264 368000 or [policyteam@testvalley.gov.uk](mailto:policyteam@testvalley.gov.uk), and we will be happy to work with you to provide a more detailed profile.

This profile contains key information for you to use to contribute to the development of a Neighbourhood Plan or other community project. If you know of any additional information about the parish that may be of use (for example, information on local facilities) please get in touch and we will endeavor to work with you to add to or change the profile.

Please note that most of the data featured in this profile is taken from the 2011 Census, whilst the population data is taken from Hampshire County Council's 2016 Small Area Population Forecast. Therefore, there is some discrepancy in population figures.