

Barton Stacey parish profile

This profile provides a summary of the latest available information on the demographic make-up of the Barton Stacey parish within Test Valley. It looks at information on topics such as the population structure, economic, housing, health and educational information for the parish.

Barton Stacey is one of the 59 parishes in Test Valley. It has an area of 2,032 hectares which represents 3.2% of the total area of Test Valley



Elected representatives

<p>Hampshire County Councillor</p> <p>Cllr Andrew Gibson Home: 01264 861138 Office: 01264 861087 Mobile: 07802 878248 Email: andrew.gibson@hants.gov.uk</p>	<p>Test Valley Borough Councillors</p> <p>Cllr David Drew Home: 01264 357024 Mobile: 07768 244456 Email: cllrdrew@testvalley.gov.uk</p>
<p>Barton Stacey Parish Council Chairman</p> <p>Cllr Susan Gaines Home: 01962 760564 Mobile: 07802 675100 Email: cllr.gaines@bartonstacey-pc.co.uk</p>	<p>Barton Stacey Parish Council Clerk</p> <p>Ms Jo Gadney Home: 01962 761287 Mobile: 07798 502905 Email: bartonstacey.pc@gmail.com</p>

Residents

The estimated 2016 population of Barton Stacey parish is 1,034. This is expected to increase to 1,041 by 2021 (an increase of 0.7%).

Barton Stacey 's resident population is 50.3% female and 49.7% male.

Young people (0-19) currently make up 23.4% of Barton Stacey's population; this is expected to fall slightly to 23.1% by 2021.

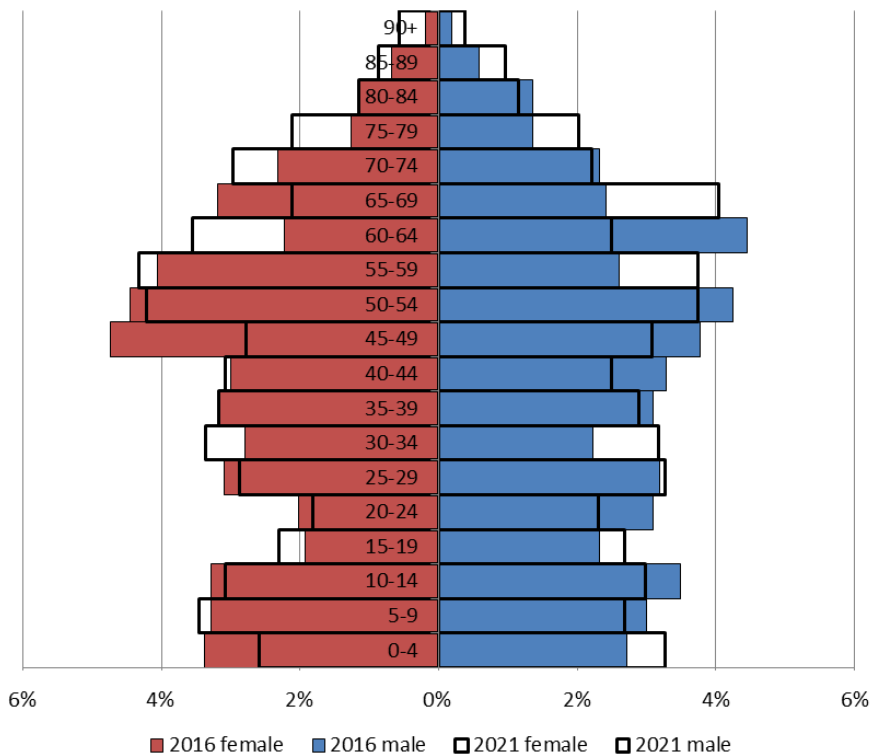
Young adults (20-39) currently make up 22.7% of the parish's population; this is expected to increase slightly to 22.9% by 2021.

Middle aged residents (40-64) currently account for 36.8% of Barton Stacey's population; this is expected to fall to 33.5% by 2021.

Those **aged 65 and over** make up 17.0% of the parish's population; this is expected to rise to 20.6% by 2021.

Those **aged 85 and over** currently represent 1.6% of the population; this is expected to rise to 2.8% by 2021.

Age of parish population



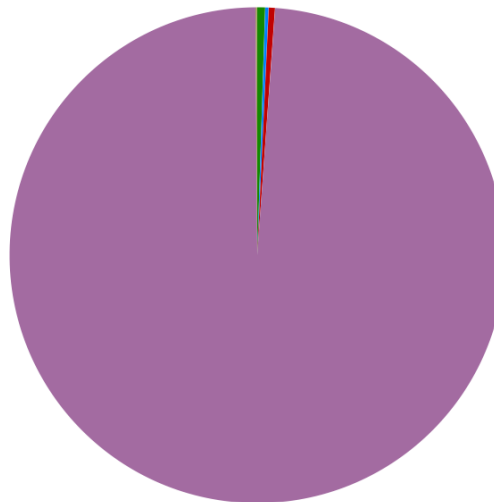
Ethnicity

The largest ethnic group in Barton Stacey is “White” at 98.7% of the parish's population. That compares with a figure of 95.9% for Test Valley as a whole and 95.0% for Hampshire.

The second largest ethnic group (0.5%) is “Asian/Asian British”. That compares with 2.0% for Test Valley as a whole and 2.7% for Hampshire.

Residents by ethnicity (count)

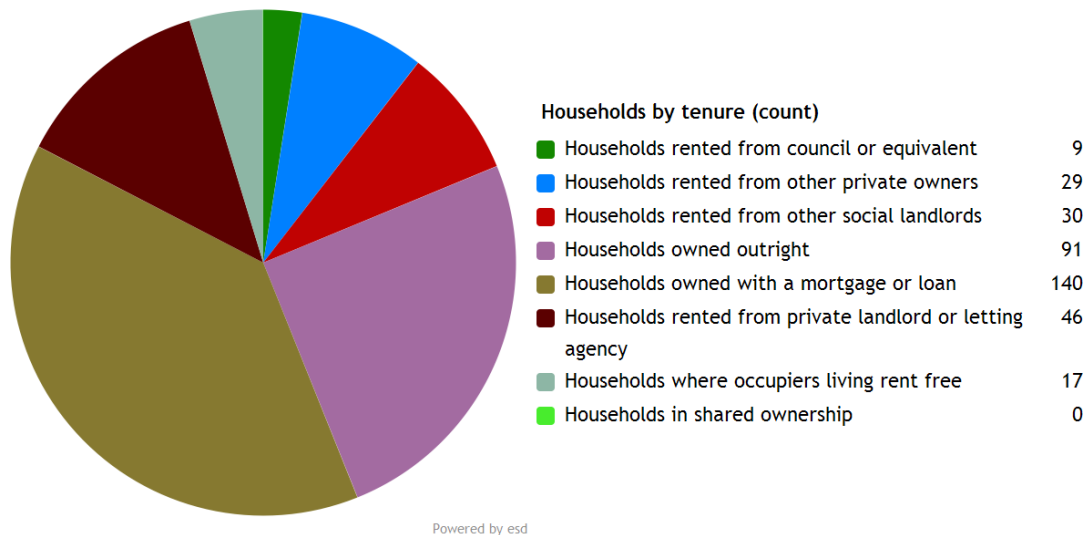
Residents who are Asian/Asian British	5
Residents who are Black/African/Caribbean/Black British	2
Residents who are Mixed/multiple ethnic groups	4
Residents who are White	936
Residents who are Other ethnic group	1



Powered by esd

Households

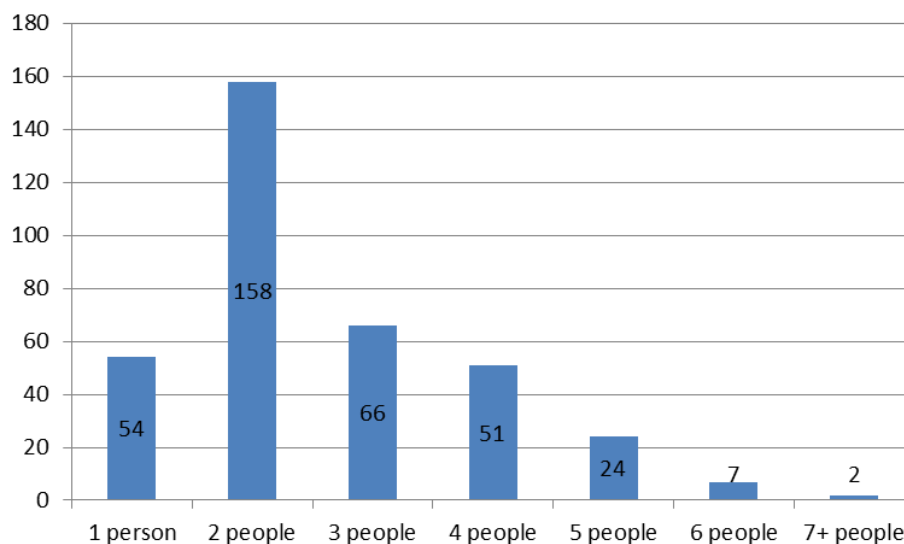
Barton Stacey parish has **362 households**, which represent 0.8% of Test Valley's 47,626 households. The household split by tenure is shown below (tenure refers to the financial arrangements under which a home is occupied).



The majority of properties (63.8%) are **owned by those who live in them**. This is lower than the Test Valley average of 70.4%.

20.7% of Barton Stacey households are **privately rented**, and 10.8% are **socially rented**. This compares to 12.9% and 14.4% respectively across Test Valley.

Households by number of residents



43.6% of Barton Stacey's households are occupied by two people, and 14.9% by one person. 41.4% of the parish's households are occupied by more than two people.

Barton Stacey has 48 households with **dependent children aged 0 to 4**. That represents 13.3% of the parish's households.

119 households in the parish have **dependent children of all ages**. That represents 32.9% of the parish's households.

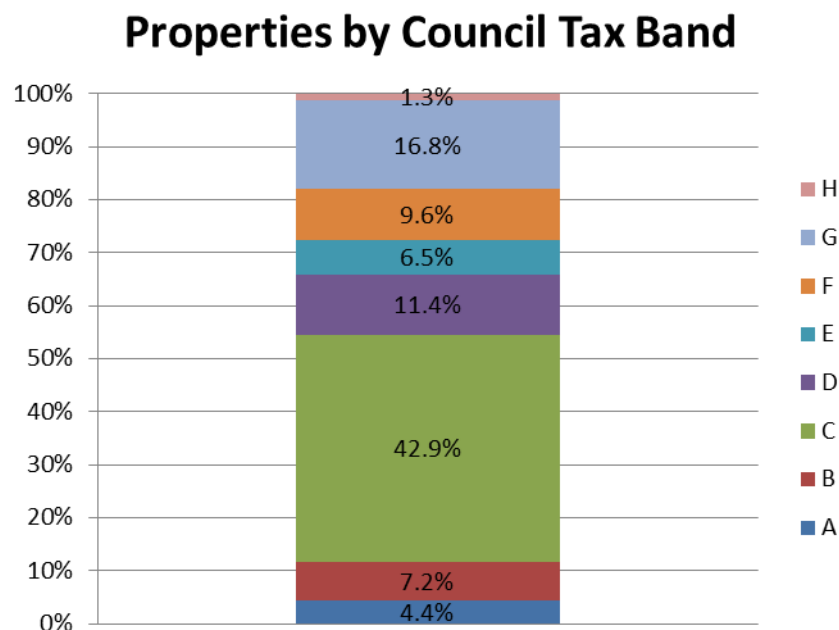
House prices

According to Zoopla, the average house price in Barton Stacey (as of September 2016) is **£455,620**. This has increased by 20.8% in the last five years.

According to Zoopla, the average house price in Newton Stacey (as of September 2016) is **£1,525,564**. This has increased by 17.4% in the last five years.

It is estimated that **38.2% of households in north rural Test Valley cannot afford to buy a private property**. The north rural area includes the wards of Harewood, Anna, Amport, Bourne Valley, Over Wallop and Penton Bellinger.

Council Tax Bands



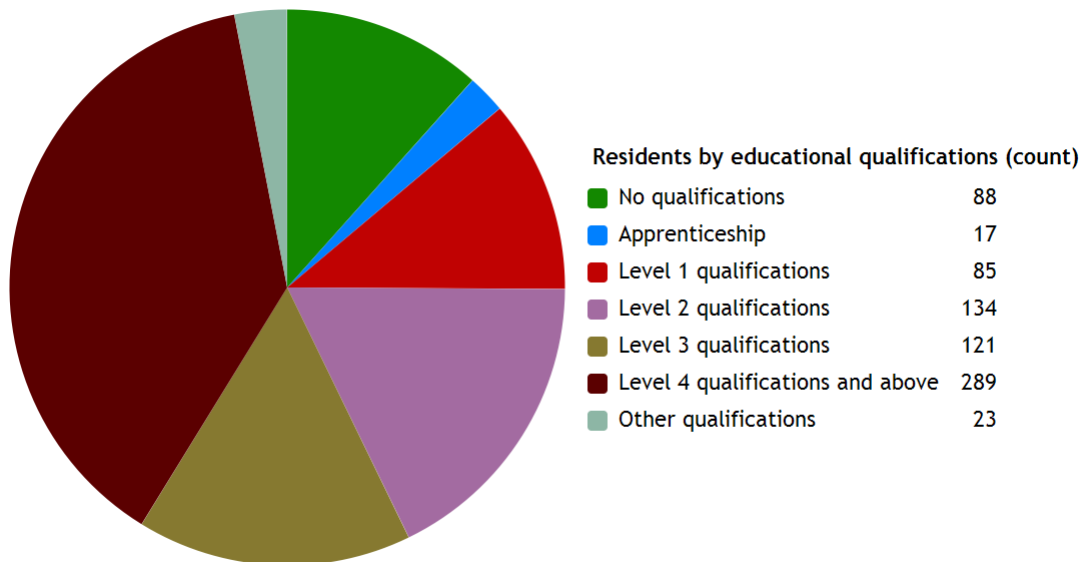
11.6% of Barton Stacey properties are at the **lower** end of the property market (Bands A and B). This compares to 22.2% for Test Valley as a whole.

60.8% of the parish's properties are in the **middle** range of the property market (Bands C to E). This compares to 60.8% across the whole borough.

27.4% of Barton Stacey's properties are at the **higher** end of the property market (Bands F to H). This compares to 17.1% of all Test Valley properties

Education

31.2% of Barton Stacey's residents have achieved **level 4 qualifications** and above compared to 30.5% in Test Valley as a whole. 11.6% of Barton Stacey's residents have **no qualifications** compared to 18.4% in Test Valley.



Powered by esd

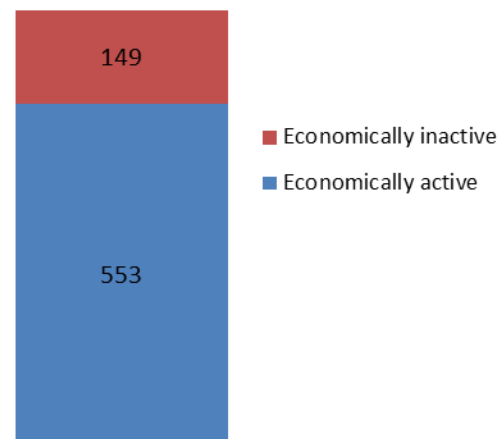
No qualifications	No academic or professional qualifications.
Level 1	1+O level passes, 1+CSE/GCSE any grades, NVQ level 1, Basic/Essential skills, NVQ Level 1.
Level 2	5+O level passes, 5+GCSEs (grades A*-C), 1 A level, 2-3 AS levels, City and Guilds Craft, NVQ level 2.
Level 3	2+A levels, Higher School Certificate, NVQ level 3, City and Guilds Advanced Craft, BTEC National.
Level 4/5	Degree (e.g. BA, BSc) higher degree (e.g. MA, PhD, PGCE), NVQ levels 4 and 5, qualified teacher, nurse or accountant status, BTEC Higher.
Other qualification	Level unknown, vocational/work-related qualifications, foreign qualifications.

Employment

78.8% of Barton Stacey residents aged 16-74 are **economically active**, compared to 73.4% of Test Valley residents. This includes people in full, part and self-employment, those who are actively seeking a job, and full-time students.

The remaining 21.2% of residents aged 16-74 are **economically inactive**, compared to 26.6% of Test Valley residents. This includes people who are retired, long-term sick or disabled, or who look after the home and family.

Economic activity (count)

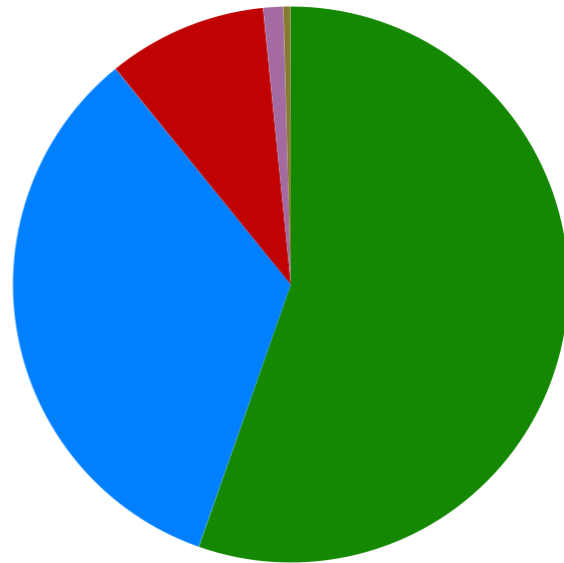


Health

Barton Stacey has 11 (1.2%) residents that report being in **bad health** and 4 (0.4%) residents that report being in **very bad health**.

Residents by level of health (count)

Very good health	525
Good health	320
Fair health	88
Bad health	11
Very bad health	4



Powered by esd

Community plans

Barton Stacey has a **Village Design Statement** which was adopted by Test Valley Borough Council in June 2016 as Supplementary Planning Guidance. The design statement provides a description of the natural and man-made features of the village of Barton Stacey that are regarded by the members of the community as particularly distinctive. The document provides a guide to ensure that future development and change is managed to respect and preserve the character and distinctiveness of the village. It should thus contribute positively to protecting and enhancing the special nature and qualities of the community that is Barton Stacey today.

This document is available on the Council's website at the following page:

<http://bit.ly/2eAp1P9>

Barton Stacey also has a **Parish Plan**, which is a document that sets out what is important to the local community. It was published in 2007, and covers a wide range of issues including social, economic and environmental issues, and can be found online at: <http://bit.ly/2en8oJ4>

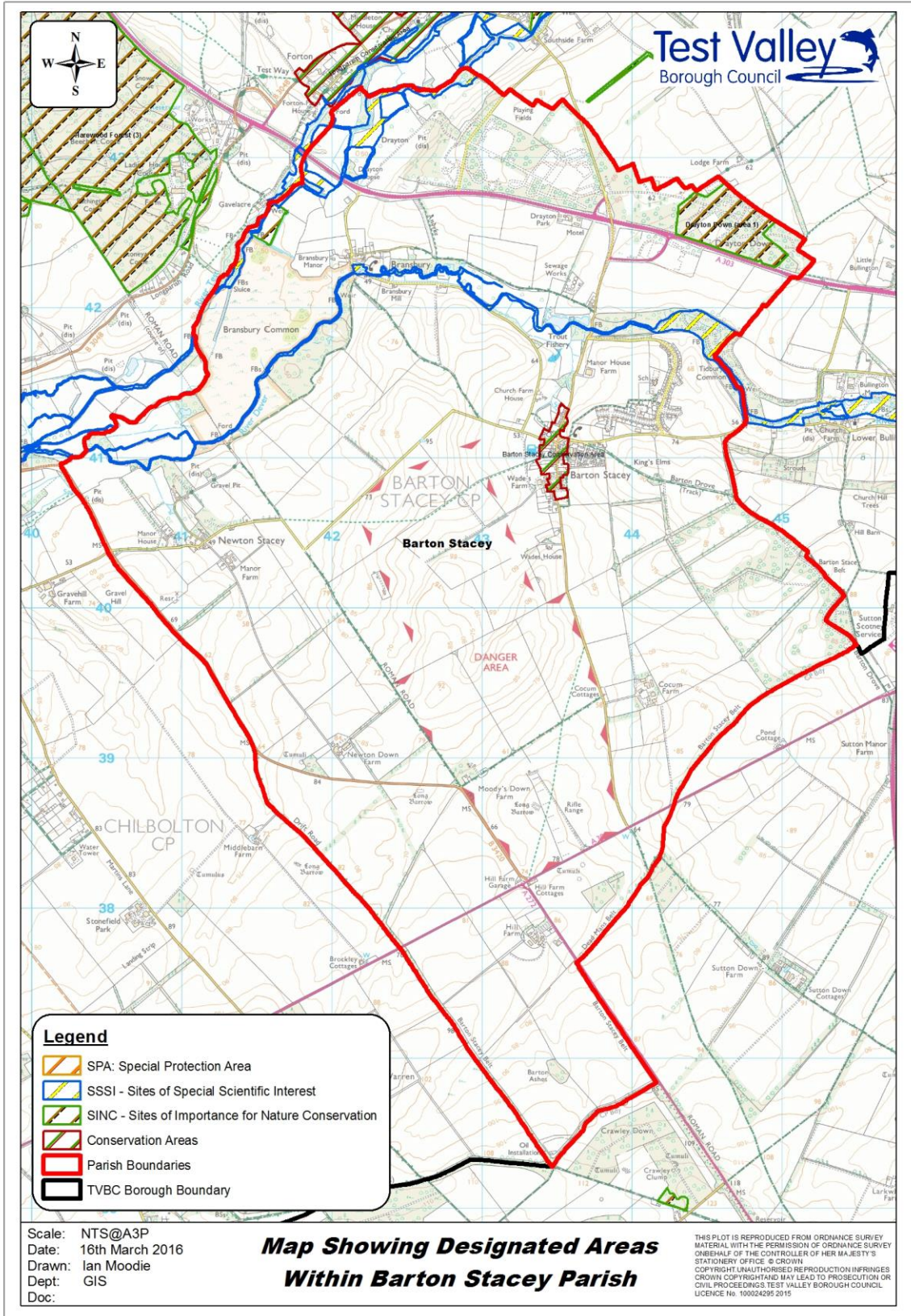
Details of any community planning exercises your parish is undertaking can be added here. Please get in touch with the Policy Team at the email address below and we will be more than happy to add information at your request.

Local facilities

Food stores	Yes
Other shops	Post Office
Primary schools	Barton Stacey Village School
Secondary schools	None
Health facilities	None
Leisure facilities	Recreation ground Children's play area
Public houses	The Swan Inn
Community facilities	Barton Stacey Village Hall
Churches	All Saints Church
Local recycling centres	Barton Stacey Community Centre

Public and community transport

<p>Cango C4</p> <p>This bus service runs between Andover and Barton Stacey.</p> <p>More information about the route and the timetable can be found online at:</p> <p>http://bit.ly/2enaBnK</p>	<p>Further community transport information for Test Valley can be found on Hampshire County Council's website:</p> <p>http://bit.ly/2ecJuLK</p>
-------------------------------------------------------------------------------------------------------------------------------------------------------------------------------------------------------------------------------------------	-------------------------------------------------------------------------------------------------------------------------------------------------------------------------------------



Additional information

The information in this profile has been prepared by Test Valley Borough Council's Policy Team in partnership with the Local Government Association. If you would like further information, please contact the Policy Team on 01264 368000 or policyteam@testvalley.gov.uk, and we will be happy to work with you to provide a more detailed profile.

This profile contains key information for you to use to contribute to the development of a Neighbourhood Plan or other community project. If you know of any additional information about the parish that may be of use (for example, information on local facilities) please get in touch and we will endeavor to work with you to add to or change the profile.

Please note that most of the data featured in this profile is taken from the 2011 Census, whilst the population data is taken from Hampshire County Council's 2016 Small Area Population Forecast. Therefore, there is some discrepancy in population figures.