

DRAFT

for discussion - not issued!

Site Location Plan
Scale 1:1000 @ A1

Junior Play Zone

- 1 Timber basket swing (PD400-03)
2.4m high, basket suitable for inclusive use by all
 - 2 Wrecked Ships Stern, Clamber Stack 4 (PD3000-81)
Using both timber and rope the Clamber Stacks encourage children to use their imagination and to develop both their physical and social skills.
 - 3 Rota Roka (RA401s)
Spinning and rocking dish style roundabout suitable for inclusive use by all.
- 125 sq mts Resin bonded rubber 'ECO safer surface' in blue to maximum Free Fall Height of 2.4m

- 4 'Stonehenge' (EC227s)
Chunky timber stretch & step posts
- 5 'Sea-Swell' see-saw (HO812873)
Pivoting balance beams
- 16no. 1.5 x 1.0m Grassmatt rubber matrix tile safer surface
- 6 Natural timber 'Log Slice' stepping posts
For clambering up the grass bund
- 7 Natural boulders
4 medium and 3 large boulders for informal seating & clambering. Locally sourced with sharp edges removed.
- 8 Ship theme stepping stones
10no. 350mm diameter curled ships rope effect stepping stone and 1no. 575mm diameter Compass, both cast from buff coloured concrete.

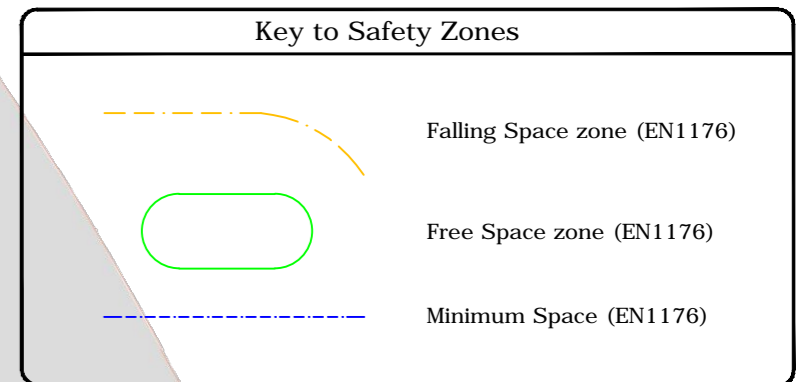
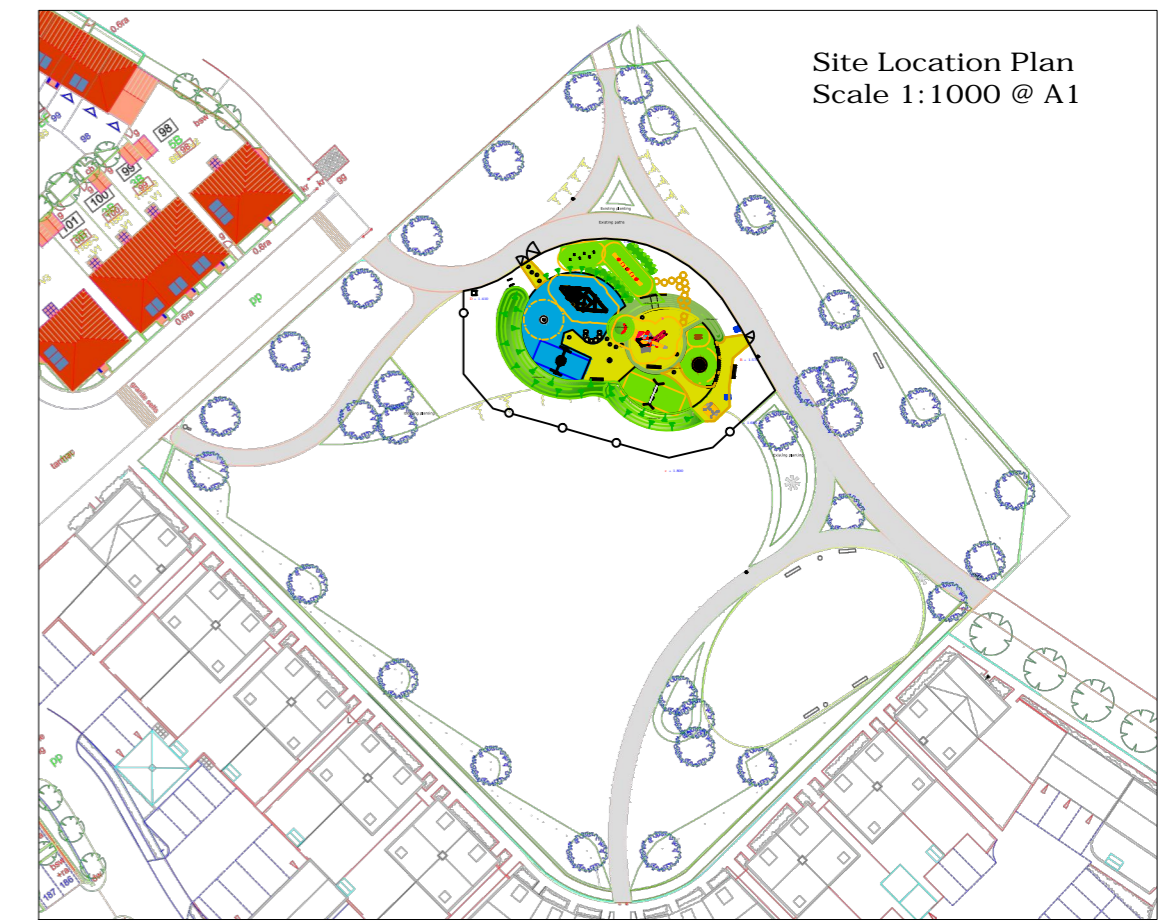
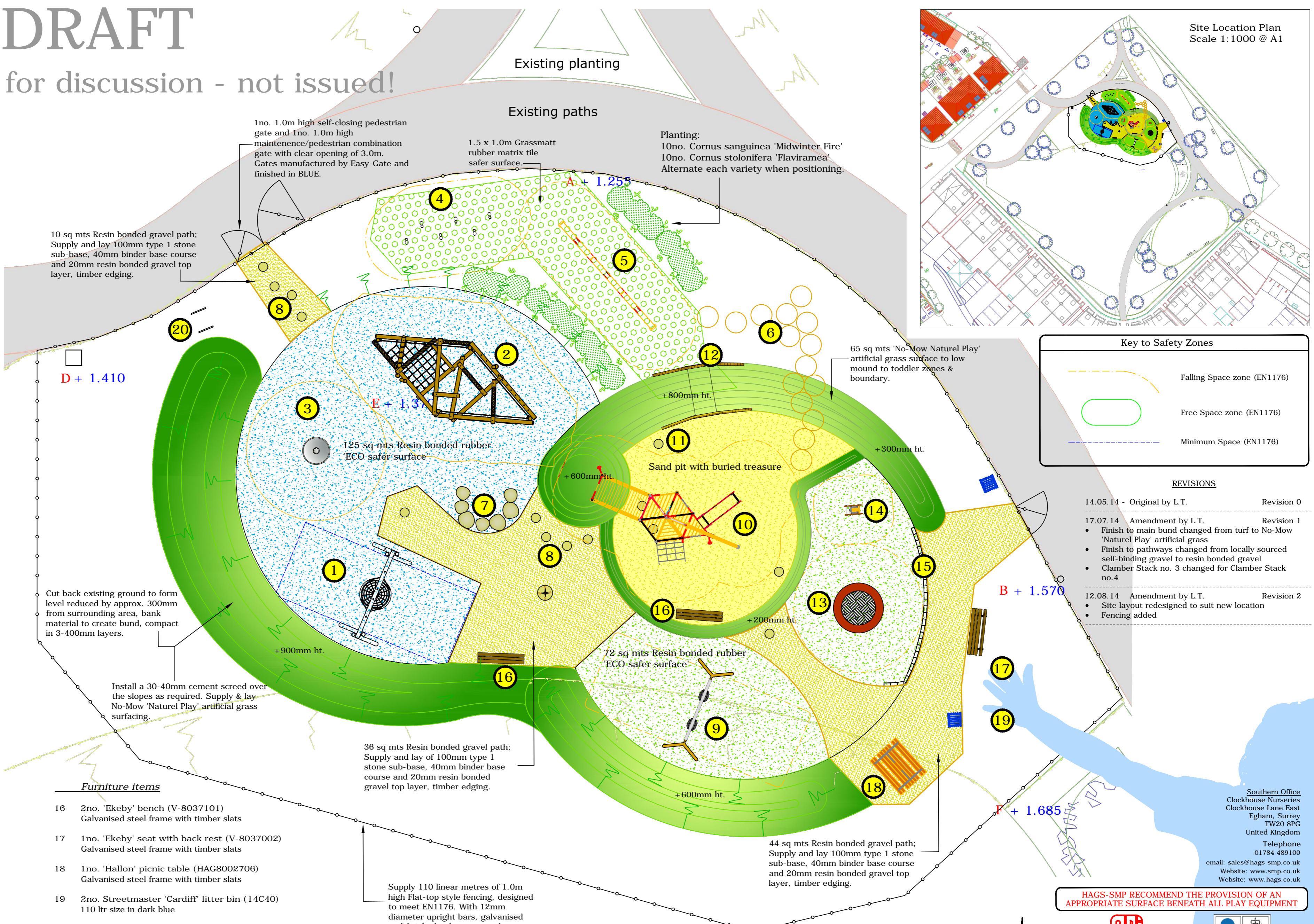
Toddler play Zone

- 9 'Goro' timber swing frame (V-8037885)
2.4m high with 2no. 'Rinda' cradle seats
 - 10 Timber Wrecked Ships Bow (SP5642)
Multi-play structure with slide, rope ramp, bridge to 'island mound', talking tubes, port hole screens, ships mast & sails
 - 11 Sand Surprises (X-SST)
4no. Treasures buried in the sand: pieces of eight, a compass, telescope, skull and cross bones.
- Sand Pit:
Excavation of 50 sq m area to 300mm depth. Supply & lay geotextile membrane. Shutter 28 l/m edges with rough timber boarding, pegged into place. Supply and spread 15 cubic metres of play grade sand to 300mm depth.

- 12 Landscape Tunnel (PCL/TUN)
2.0m long x 800mm diameter
 - 13 'Circus' trampoline (20.02.112)
Installed flush with surrounding ground level
 - 14 'Salmo' spring rider (HAG8000924)
With side and back support for inclusive use
- 72 sq mts Resin bonded rubber 'ECO safer surface' in green to maximum Free Fall Height of 1.5m

- 15 7 mts. Treated Timber Sleepers
Installed upright at different heights to create retainer to toddler play zone

- ### Furniture items
- 16 2no. 'Ekeby' bench (V-8037101)
Galvanised steel frame with timber slats
 - 17 1no. 'Ekeby' seat with back rest (V-8037002)
Galvanised steel frame with timber slats
 - 18 1no. 'Hallon' picnic table (HAG8002706)
Galvanised steel frame with timber slats
 - 19 2no. Streetmaster 'Cardiff' litter bin (14C40)
110 ltr size in dark blue
 - 20 2no. 'Argo' cycle stands (HAG8012593)
Galvanised steel, hold 1 cycle each



REVISIONS

14.05.14 - Original by L.T.	Revision 0
17.07.14 Amendment by L.T.	Revision 1
<ul style="list-style-type: none"> Finish to main bund changed from turf to No-Mow 'Nature Play' artificial grass Finish to pathways changed from locally sourced self-binding gravel to resin bonded gravel Clamber Stack no. 3 changed for Clamber Stack no. 4 	
12.08.14 Amendment by L.T.	Revision 2
<ul style="list-style-type: none"> Site layout redesigned to suit new location Fencing added 	

Southern Office
Clockhouse Nurseries
Clockhouse Lane East
Egham, Surrey
TW20 8PG
United Kingdom
Telephone
01784 489100
email: sales@hags-smp.co.uk
Website: www.smp.co.uk
Website: www.hags.co.uk

HAGS-SMP RECOMMEND THE PROVISION OF AN APPROPRIATE SURFACE BENEATH ALL PLAY EQUIPMENT

DATE	12.08.14	SCALE	1:100 @ A2
DRAWN BY :	L.T.	CHECKED BY :	--

DRAWING NUMBER	Q-06398-D6Z8-C	REVISION	2
----------------	----------------	----------	---



CUSTOMER
Test Valley Borough Council

PROJECT
Play Area at Quicksilver Way Picket Twenty

TITLE
Design Revision 2 for approval