

Test Valley Borough Council

# Picket Twenty Resident Newsletter



**Hello! This bi-monthly newsletter provides information about the development, activities and events to residents at Picket Twenty.** For further information about the development or if you have any suggestions for community activities, please contact: Sharon Goodridge, Community Development Worker, 01264 368622 [sgoodridge@testvalley.gov.uk](mailto:sgoodridge@testvalley.gov.uk)

## About Picket Twenty

The Picket Twenty development sits in the parish of St Mary's. Local ward councillors are: Iris Andersen, Katherine Bird and Nigel Long. The parish church is St Mary's in Andover and the vicar is John Harkin.

A Mixed Glass Recycling Bin has recently been installed outside the Temporary Community Centre at Picket Twenty for residents to recycle glass jars and bottles.

## Housing Occupations

Latest figures obtained from the developers' sales offices showed that over 200 homes, of the overall 1200 homes planned, are now occupied at Picket Twenty.



## London Road Underpass

The London road underpass is now open for pedestrians and cyclists to use between Picket Twenty and London Road.

Artist David Dixon worked with the pupils from Vigo Junior School on ideas about the places and things that make them feel good and has used their original designs to decorate the walls of the underpass.

Buses will be able to use the underpass from early 2013 to shorten journey times but the underpass will remain closed to car traffic.

## Driving Around The Neighbourhood

Residents and contractors are asked to *please drive carefully* around the development as children may be playing near the roadside.

## Disposing Of Rubbish And Clearing Up After Your Dog

*Please help keep the Picket Twenty neighbourhood clean by clearing up after your dog - thank you.*

Following requests from residents, Persimmon developers have funded two bins at the development. There is a black bin on Picket Twenty Way, which is not fixed so it can be moved if it isn't used and be re-sited elsewhere. Also a red dog bin has been installed at the top end of the cycle path near Old Micheldever Road. It is hoped by providing these bins it will help residents dispose of bagged dog mess.

It is actually an offence if you do not clear up after your dog and owners may receive a Fixed Penalty Notice of £80. Authorised council officers patrol throughout the borough including your neighbourhood.

If you know of an area that suffers from dog fouling or you have seen a person not clearing up after their dog, call Test Valley Borough Council on **01264 368000**.

## Community Information

### *Community Centre*

The temporary facility is now sited next to the Persimmon site office, at the end of Picket Twenty Way.

It is used as a venue for information about the development, local facilities, services and community activities in and around Andover.

We welcome suggestions from residents for activities and events at Picket Twenty.

A permanent community centre at Picket Twenty will be provided by the developers once 400 homes are occupied.

### *Community Coffee Group*

Pop into the community centre for a cuppa' on Thursday afternoons, 1.30 – 3pm throughout January, beginning January 10th.

An opportunity to find out about the development and to meet your neighbours (accompanied children welcome). Contact Sharon for further information.

### *Community Litter Pick*

#### **Saturday 19th January at 10.30am**

As local residents, please spare an hour of your time to help keep the development and parkland litter free. Meet Sharon at the Community Centre, Picket Twenty Way.

Litter 'grabbers', rubber gloves and rubbish bags will be provided. For further information please contact Sharon.

### Garden Share

This is a new scheme initiated by Transition Town Andover, a group that is involved in various sustainability projects around the town.

Andover Garden Share is working at bringing together people with gardens which aren't being cultivated with keen gardeners who want to grow vegetables, herbs, fruit or flowers. People are matched up according to their likes and dislikes and needs.

Garden sharing can be seen as an alternative to having an allotment. It can also be more of a hobby for a semi-retired person or anyone with time on their hands who likes the idea of being helpful to someone else in the community.

The aim is to increase the opportunities for growing fresh produce locally and to get communities more joined up in order to work together to solve problems.



**AndoverGardenShare**  
Helping growers find gardens

**Want to grow food but don't have space..?**



When we looked up through the garden share scheme, and we saw you had big plans for your garden, this was not what I had in mind!

**Have you a garden in need of care..?**

**find out about garden sharing!**

 Find us on **Facebook** or phone Amanda on 01264 771 175

**Andover**  
TRANSITION TOWN

For information contact [gardenshare@transitiontownandover.org.uk](mailto:gardenshare@transitiontownandover.org.uk)



**02164 359062**

**Longmeadow Centre, Cricketer's Way**

If you are an adult and are interested in brushing up your English, maths and/or IT skills, please contact us for more details. These courses are free and on some of the courses there are crèche facilities for pre-school children.

We run courses for parents/carers and their pre-school children such as Bounce and Rhyme, Safe and Healthy Baby, Learning Through Play, etc. These courses are free.

We also run First Aid and Food Safety courses, for which there is a small charge to cover the cost of the books and certificate.

If you would like to find out more about any of these courses, please either telephone us, call into the Longmeadow Centre or e-mail

**[enquiries@andoverafcentre.co.uk](mailto:enquiries@andoverafcentre.co.uk)**



### *Neighbourhood Watch*

A meeting to discuss the Neighbourhood Watch scheme at Picket Twenty is being held on Thursday 17th January at the Community Centre, Picket Twenty Way at 7pm.

If you would like to get involved or find out more information please contact Sharon.



### *Me and My Dad's Club*

Meet fortnightly on Saturday mornings, at Spring Meadow Children's Centre, Smannell Road, 9.30am – 11.30am. Activities for dads and children up to 8 years old.

For more details contact **01264 336718**.

## **Public Art**



A series of consultations have been held to gather people's thoughts, ideas and insights into public art, both in the Test Valley and further afield, with a view to developing a Public Art Strategy for Test Valley.

For further information contact **Alex Hoare**, TVBC Arts Officer.

## **In Case of Emergency – ICE**



**The ICE campaign was launched in April 2005 and is to help paramedics know who you would want them to contact in the case of an emergency.**

Store your emergency contact details under ICE in your mobile phone address book so emergency personnel know who to contact. If you have more than one emergency contact list them as ICE1, ICE2 etc.



## Education

### *Picket Twenty Primary School*

The construction of Pilgrims Cross Primary School at Picket Twenty is well under way and the school is expected to open in September 2013. The school is intended to serve the Picket Twenty development and initially will welcome local children in Year R, 1 and 2 classes.

Contact [www.hants.gov.uk/admissions](http://www.hants.gov.uk/admissions) or call **08456 035 623** for information on school admissions.

If you would like details about Pre School Provision in Andover please contact Sheila Sahota - Childcare Development Coordinator for Test Valley on **02380667360** or [sheila.sahota@hants.gov.uk](mailto:sheila.sahota@hants.gov.uk)

## Reporting Crimes & Incidents

Residents are encouraged to report any incidents of Anti Social Behaviour or other non emergency incidents using the 101, non emergency, telephone number.

For any community safety matters residents can contact TVBC Community Wardens at [wardens@testvalley.gov.uk](mailto:wardens@testvalley.gov.uk)

Crime Stoppers 0800 555 111



## Disposing Of Rubbish

**Refuse collection day at Picket Twenty is on a Thursday.**

Following the collection of kerbside rubbish from Picket Twenty properties, TVBC request that all bins are taken back onto your property as soon as possible so the development is kept looking tidy.

For information on waste and recycling visit [www.testvalley.gov.uk](http://www.testvalley.gov.uk)

If you would like to report any litter or environmental issues explain what you've seen and where by:

**texting 'love' to 60060**

**calling 01264 368000**

**or emailing [environmentalservice@testvalley.gov.uk](mailto:environmentalservice@testvalley.gov.uk)**

Information available online at [www.testvalley.gov.uk/love](http://www.testvalley.gov.uk/love)





### Andover Rail Station

Works to improve Andover Rail Station have now finished. Improvements include a new ticket hall, internal alterations to allow disabled access, a new retail unit, provision of a drop off / collection area, a new taxi rank and the introduction of a secure cycle storage area.

Since work began nine months ago, the station has also been re-painted and new lighting, fencing and signage installed.

The works have been funded by the Department for Transport, Hampshire County Council and Test Valley Borough Council. South West Trains managed the project, delivered by contractor Hollywell.

The station will now be monitored to evaluate the success of the changes. Further work to provide additional car parking and pedestrian access is being investigated.



## NEW BUS ROUTE LAUNCHED

### For Andover's Picket Twenty Estate

Stagecoach and Hampshire County Council have launched a new bus route to link Picket Twenty with the town centre.

The P20, hourly, service links Picket Twenty, Admirals Way, Vigo Road, Andover town centre, Weyhill Road, Andover Rail Station and Tesco Extra. Two drivers and an extra low-floor single deck bus is used to provide the new service.

A single fare between Picket Twenty and the town centre is £1.80 and regular travellers will be able to take advantage of day, weekly and monthly tickets.

Information from [www.stagecoachbus.com/south](http://www.stagecoachbus.com/south) or Traveline on **08457 484950**

### Subsidised Bus Passes

Following the commencement of the new P20 bus service connecting the development with the town centre, subsidised 'Andover Area Mega Rider' bus passes are available for residents at Picket Twenty, funded by the developer, Contact Sharon for an application form and details about the scheme.

### Car Sharing

Drivers in Hampshire are being encouraged to save money and beat the recent rise in fuel prices by sharing their journeys rather than driving alone. To join Hants Car Share for free, just go to [www.hantscarshare.com](http://www.hantscarshare.com), register your journey and start searching for someone going your way today!

### Health Walks

All residents are welcome for an hour long walk, lead by a Health Walk Leader, to help fitness and meet new people on Tuesday's 22 Jan, 12 Feb and 12 March.

We will leave from outside the Temporary Community Centre on Picket Twenty Way, at 10am. Please wear suitable footwear and bring a waterproof coat (if necessary) and a drink. For details please contact Sharon.

### Cycle Ride

We would like to offer group cycle rides at Picket Twenty. These cycle rides would be a good opportunity to keep fit and to meet other local people. The routes could be as long or short as people want.

So far one resident is interested in establishing a cycle group – would you like to join in?

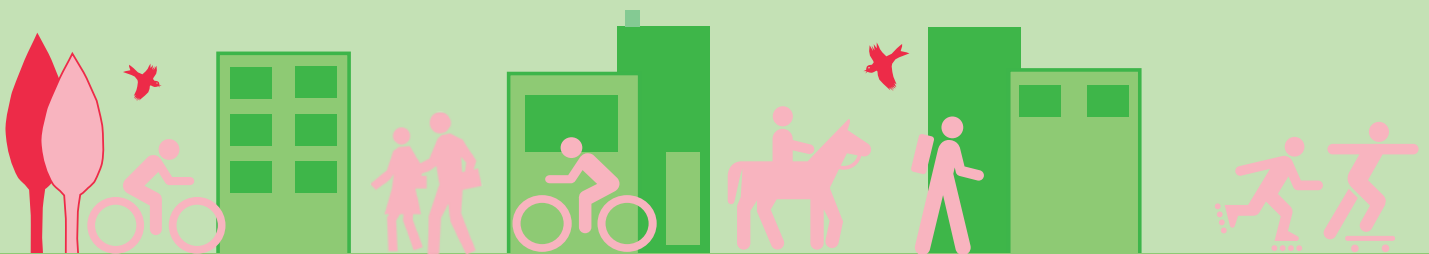
If you are interested in cycling with other residents of Picket Twenty please contact Sharon.

### Parking

Please be considerate to your neighbours when parking your vehicle at Picket Twenty. Every household has allocated parking spaces and residents should use these to park their vehicles.

Cars parked on pavements make it difficult for pedestrians to walk safely and can be dangerous especially for children. Emergency vehicles such as fire engines could also find it difficult to access some roads/ houses, where residents have parked inconsiderately.

Vehicles parked on pavements which are causing an obstruction should be reported to the police using the 101 number.



For any information regarding the Community Travel Plan or local routes, please contact:

Sharon Goodridge, Community Development Worker

**01264 368622**

**[sgoodridge@testvalley.gov.uk](mailto:sgoodridge@testvalley.gov.uk)**



## Information for residents

### *Resident Newsletters*

Residents are reminded that they can view the bi-monthly resident newsletters and access local information about the development, local activities and events on the Picket Twenty page of the Council's website by accessing: **[www.testvalley.gov.uk](http://www.testvalley.gov.uk)**

Sharon can email or post you a newsletter on request or they can be collected from the Community Centre.

### *Contact us*

Residents can contact the Planning Policy Team at [planningpolicy@testvalley.gov.uk](mailto:planningpolicy@testvalley.gov.uk) or call 01264 368000 with any planning queries regarding the New Neighbourhoods in Andover.

Please continue to contact Sharon (Community Development Worker) for local information and queries about any community activities or for local information

**01264 368622 / [sgoodridge@testvalley.gov.uk](mailto:sgoodridge@testvalley.gov.uk)**