

## Local Conservation Groups

### The Anton River Conservation Association (TARCA)

A local volunteer group working along the River Anton Catchment in Andover. Established as part of the River Anton Enhancement Scheme.

For more information contact:  
[antonriver@live.com](mailto:antonriver@live.com)

or visit: [www.antonriver-conservation.org.uk](http://www.antonriver-conservation.org.uk)

Thank you to everyone who has volunteered throughout 2018 to help maintain and enhance our green spaces.

New volunteers, including families, are always welcome to help with the ongoing programme of events.

## Test Valley Parks and Countryside Team

Work to maintain and develop the borough's green spaces which include countryside sites, Nature Reserves, parks and cemeteries.

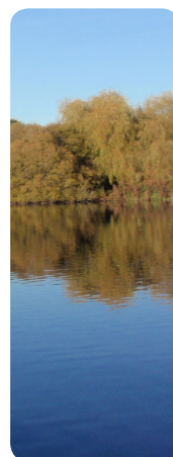
Please contact the Countryside Officers in advance for more details.

Further information is available on  
[www.testvalley.gov.uk](http://www.testvalley.gov.uk)

Or contact the the Countryside Officers on  
**01264 368000**

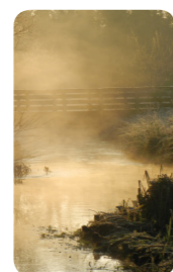
Or email [community&leisure@testvalley.gov.uk](mailto:community&leisure@testvalley.gov.uk)

Community and Leisure Service  
Test Valley Borough Council  
Beech Hurst  
Weyhill Road  
Andover  
Hampshire  
SP10 3AJ



### Anton Lakes LNR, Andover Grid reference: SU357466

Anton Lakes were formed as a result of gravel extraction. The lake outflow is the headwaters of the River Anton. The springs, lake river and meadows around the edge of the site provide a mosaic of habitats, including chalk grassland, watercress beds and water meadows. Cattle now graze throughout the summer months and help to support the diverse range of wild flowers. Many birds can also be found on the lakes and streams including kingfishers and water rail.



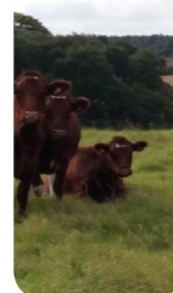
### Rooksbury Mill LNR, Andover Grid reference: SU356443

Rooksbury Mill, also formed through gravel extraction and once a trout fishery now plays host to a variety of wildlife including otters, water voles and kingfishers. Its mosaic of chalk grassland and riparian habitats provide a rich diversity of wildlife.



### Ladies Walk, Andover Grid reference: SU369445

Located on the south eastern edge of Andover, Ladies Walk comprises of three moderately steep north facing meadows. The chalk grassland on site supports a diverse array of butterflies and other invertebrates, as well as vertebrates such as common lizards and slow worms. The meadows are grazed throughout the summer to improve their sward structure. The Ladies Walk which borders the site dates back to 1785.



### Harewood Common, Andover Grid reference: SU357466

Comprising of nearly 10 hectares of chalk grassland, Harewood Common is rich in wildlife and provides a refreshing contrast to the nearby Urban Park. Originally an agricultural field, the common backs onto the ancient woodland at Harewood Forest and is managed through grazing during the summer months. Creating an ideal habitat for insects, birds and bats to thrive.



### Ox Drove Meadow, Andover Grid reference: SU357466

Comprising of just over three hectares of chalk grassland, Ox Drove Meadow is made up of a gently sloping path which encompasses the site. New trees planted around the site are helping to establish a robust hedgerow around its boundary which is important for the sites' inhabitants which include a wide variety of birds and insects as well as the Hazel Dormouse which makes the site its home.

# Parks and Countryside Events and Activities 2019



## North Test Valley

[www.testvalley.gov.uk](http://www.testvalley.gov.uk)



TestValleyBC



@TestValleyBC

Test Valley  
Borough Council



# What's on?

## Prune and Mulch Orchard

Sunday 6 January

10am - 2pm

*Venue: Rooksbury Mill LNR*

*Meeting point: Main Car park off of Barlows Lane*

## Scrub Clearance & Coppicing

Saturday 19 January

10am - 2pm

*Venue: Anton Lakes LNR*

*Meeting point: Main Carpark off of Redon/ Goch Roundabout*

## Watercress Bed Maintenance

Sunday 3 February

10am - 2pm

*Venue: Anton Lakes LNR*

*Meeting point: Main car park off of Goch/ Redon Roundabout*

## Hedge Maintenance

Saturday 16 February

10am - 2pm

*Venue: Ladies Walk*

*Meeting point: Hedge End Road open space*

## Hazel and Willow Coppicing

Sunday 3 March

10am - 2pm

*Venue: Anton Lakes LNR*

*Meeting point: Main Car Park off Goch/Redon roundabout*

## Lake Bank Enhancements

Sunday 16 March

10am - 2pm

*Venue: Anton Lakes LNR*

*Meeting point: Main car park off Goch/Redon roundabout*

## River Clean and Litter Pick

Sunday 31 March

10am - 2pm

*Venue: Wickes Meadow*

*Meeting point: Car park behind Wickes*



## River Clean

Sunday 14 April

10am - 2pm

*Venue: Andover Town Centre*

*Meeting point: Anton Mill Car Park*

## Big Litter Pick

Saturday 27 April

10am - 2pm

*Venue: Anton Lakes LNR*

*Meeting point: Main car park off of Goch/ Redon Roundabout*

## River Clean

Sunday 12 May

10am - 2pm

*Venue: Rooksbury Mill LNR /Redbridge Drive*

*Meeting point: Main Car park off of Barlows Lane*

## BioBlitz

Saturday 8 June

10am - 2pm

*Venue: Rooksbury Mill LNR*

*Meeting point: Follow onsite signage*

## Ragwort Pull

Sunday 23 June

10am - 2pm

*Venue: Harewood Common*

*Meeting point: Entrance off of Bridle Close*

## Ragwort Pull

Saturday 13 July

10am - 2pm

*Venue: Ladies Walk*

*Meeting point: Hedge End Road open space*

## Guided Walk

Saturday 27 July

10am start

*Venue: Anton Lakes LNR*

*Meeting point: Main Car Park off Goch/Redon roundabout*



## Summer Walk

Sunday 11 August

10am start

*Venue: Enham Area*

*Meeting point: Augusta Park Sports Carpark, SP106 AB*

## Bat and Moth Evening

Saturday 31 August

7.45 pm

*Venue: Anton Lakes LNR*

*Meeting point: Entrance off of Goch/Redon roundabout*

## 19th Annual Zionshill Copse Community Woodfair

Saturday 7 September

10am - 5pm

*Venue: Zionshill Copse, Valley Park, SO53 4SJ*

## Bat & Moth Evening

Friday 13 September

7.15pm

*Venue: Harewood Common*

*Meeting point: Picket Twenty Community Centre*

## Bat & Moth Evening

Saturday 21 September

7.15pm

*Venue: Ladies Walk*

*Meeting point: Hedge End Road open space*

## Autumn Site Tasks

Saturday 28 September

10am

*Venue: Rooksbury Mill LNR*

*Meeting point: Main car park off of Barlows Lane*

## Bat and Moth Evening

Saturday 28 September

7.00 pm

*Venue: Rooksbury Mill LNR*

*Meeting point: main car park off of Barlows Lane*



## River Bank Vegetation Management

Sunday 13 October

10am - 2pm

*Venue: Beside Asda*

*Meeting point: Anton Mill car park*

## TARCA

Saturday 26 October

10am - 2pm

*Venue: TBC*

*Meeting point: TBC*

## Winter Jobs

Saturday 23 November

10am - 2pm

*Venue: Rooksbury Mill LNR*

*Meeting point: Main car park off of Barlows Lane*

## Winter Jobs

Sunday 8 December

10am - 2pm

*Venue: Rooksbury Mill LNR*

*Meeting point: Main car park off of Barlows Lane*

### Important Note

The practical tasks that we carry out on our Green Spaces and Nature Reserves can be strenuous, tiring and involve the use of hand tools that some people may find challenging. Please inform the co-ordinator leading the event if you have any medical conditions or concerns that could be a danger to yourself or other volunteers working around you. We reserve the right to restrict your level of participation in certain circumstances. **All children under the age of 16 must be accompanied by a responsible adult.**